

# Monthly Housing Statistics

## April 2016



### SINGLE FAMILY HOMES

Median Sales Price	
\$720,000	+6.7%
Closed Sales	
301	0.0%
Average Sales Price	
\$933,044	+12.4%

### CONDOS

Median Sales Price	
\$389,500	+5.1%
Closed Sales	
460	+1.3%
Average Sales Price	
\$462,803	+7.6%

### INDEX:

<b>Monthly Indicators</b>	<b>2</b>
Closed Sales	3
Median Sales Price	4
Median Days on Market	5
New Listings	6
Pending Sales	7
Months of Inventory	8
Active Listings	9
Average Sales Price	10
% of Original Listing Price Received	11
Active Continue to Show	12
<b>Housing Supply Overview</b>	<b>13</b>
Pending Sales (by price range)	14-15
Median Days on Market (by price range)	16-17
% of list price received (by price range)	18-19
Inventory of Homes (by price range)	20-21
Months Supply of Inventory (price range)	22-23
<b>Historical Graphs</b>	<b>24-25</b>
<b>Price Graphs</b>	<b>26-27</b>

# Monthly Indicators

April 2016

	Single Family Homes					
	Apr-16	Apr-15	%	YTD-16	YTD-15	%
<b>Closed Sales</b>	301	301	0.0%	1,070	956	11.9%
<b>Median Sales Price</b>	\$720,000	\$674,900	6.7%	\$720,000	\$675,000	6.7%
<b>Median Days on Market</b>	15	22	-31.8%	19	23	-17.4%
<b>New Listings</b>	445	424	5.0%	1,694	1,615	4.9%
<b>Pending Sales</b>	456	401	13.7%	1,558	1,493	4.4%
<b>Months of Inventory</b>	2.8	3.1	-9.7%	--	--	--
<b>Active Listings</b>	1,171	1,244	-5.9%	--	--	--
<b>Average Sales Price</b>	\$933,044	\$830,475	12.4%	\$881,020	\$852,815	3.3%
<b>% of Original Listing Price Received</b>	98.6%	96.7%	2.0%	98.6%	96.4%	2.3%

	Condos					
	Apr-16	Apr-15	%	YTD-16	YTD-15	%
<b>Closed Sales</b>	460	454	1.3%	1,613	1,433	12.6%
<b>Median Sales Price</b>	\$389,500	\$370,475	5.1%	\$380,500	\$365,500	4.1%
<b>Median Days on Market</b>	19	19	0.0%	20	24	-16.7%
<b>New Listings</b>	629	639	-1.6%	2,461	2,541	-3.1%
<b>Pending Sales</b>	656	619	6.0%	2,271	2,042	11.2%
<b>Months of Inventory</b>	3.1	3.5	-11.4%	--	--	--
<b>Active Listings</b>	1,792	1,902	-5.8%	--	--	--
<b>Average Sales Price</b>	\$462,803	\$430,131	7.6%	\$445,877	\$432,961	3.0%
<b>% of Original Listing Price Received</b>	100.0%	98.8%	1.2%	97.8%	97.5%	0.3%

SOURCE: Honolulu Board of REALTORS®, compiled from MLS data.

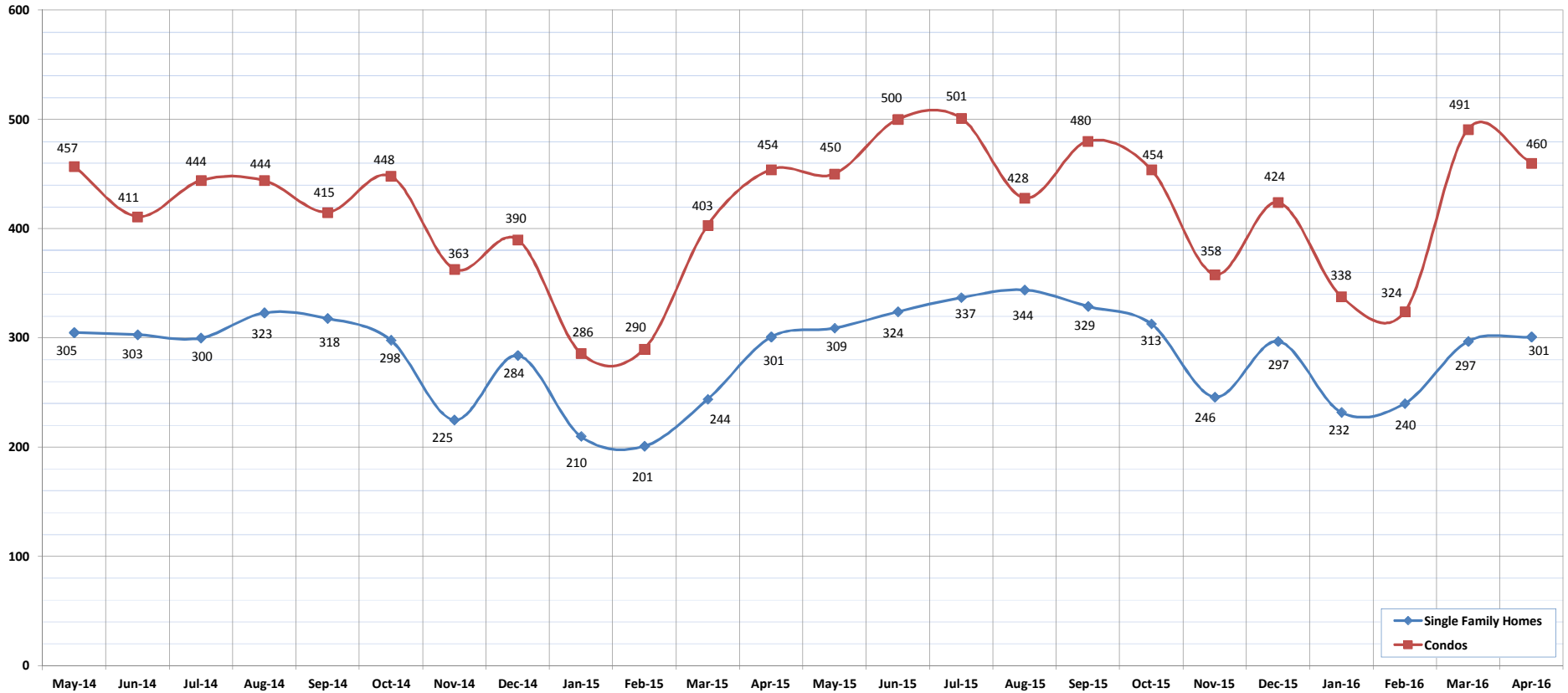


# Closed Sales

April-16

OAHU, HAWAII

(A count of all properties that have closed in a given month.)



	May-14	Jun-14	Jul-14	Aug-14	Sep-14	Oct-14	Nov-14	Dec-14	Jan-15	Feb-15	Mar-15	Apr-15	May-15	Jun-15	Jul-15	Aug-15	Sep-15	Oct-15	Nov-15	Dec-15	Jan-16	Feb-16	Mar-16	Apr-16
<b>Closed Sales: Single Family Homes</b>	305	303	300	323	318	298	225	284	210	201	244	301	309	324	337	344	329	313	246	297	232	240	297	301
<b>Closed Sales: Condos</b>	457	411	444	444	415	448	363	390	286	290	403	454	450	500	501	428	480	454	358	424	338	324	491	460
<b>Closed Sales: Total</b>	762	714	744	767	733	746	588	674	496	491	647	755	759	824	838	772	809	767	604	721	570	564	788	761

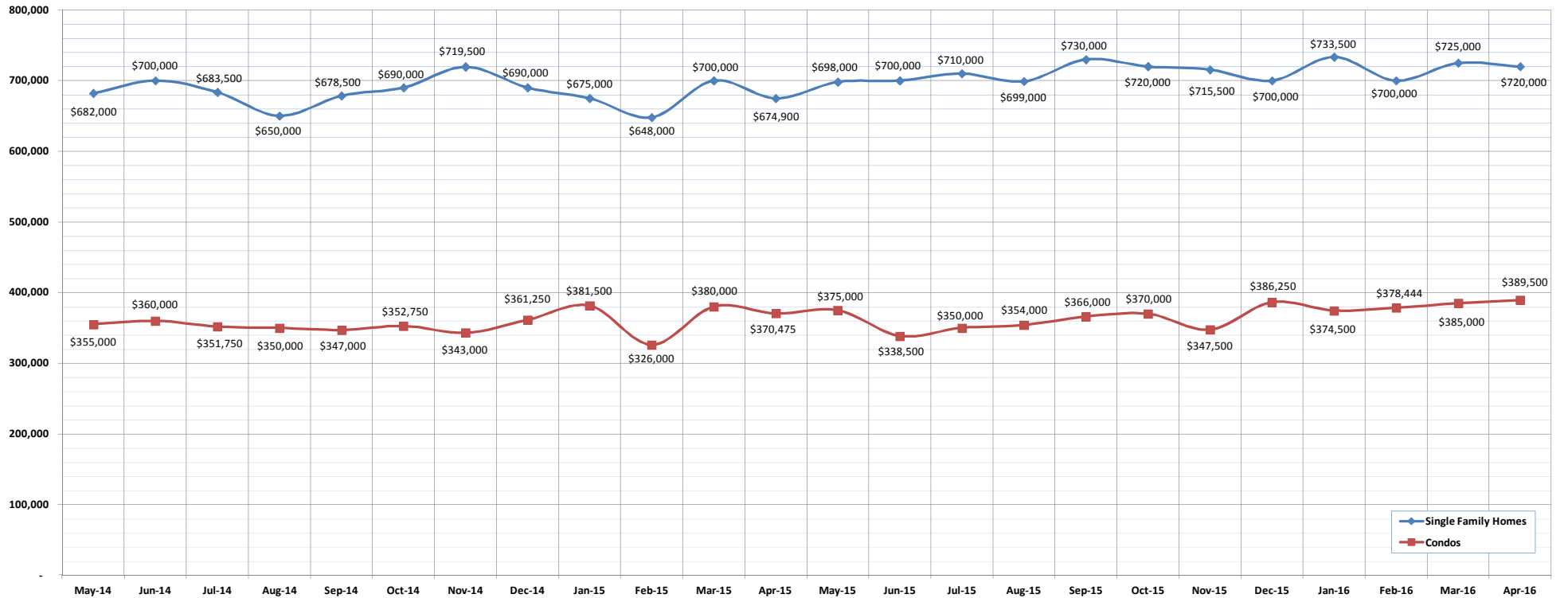
SOURCE: Honolulu Board of REALTORS®, compiled from MLS data.

# Median Sales Price

April-16

OAHU, HAWAII

(The median sales price for all closed properties in a given month.)

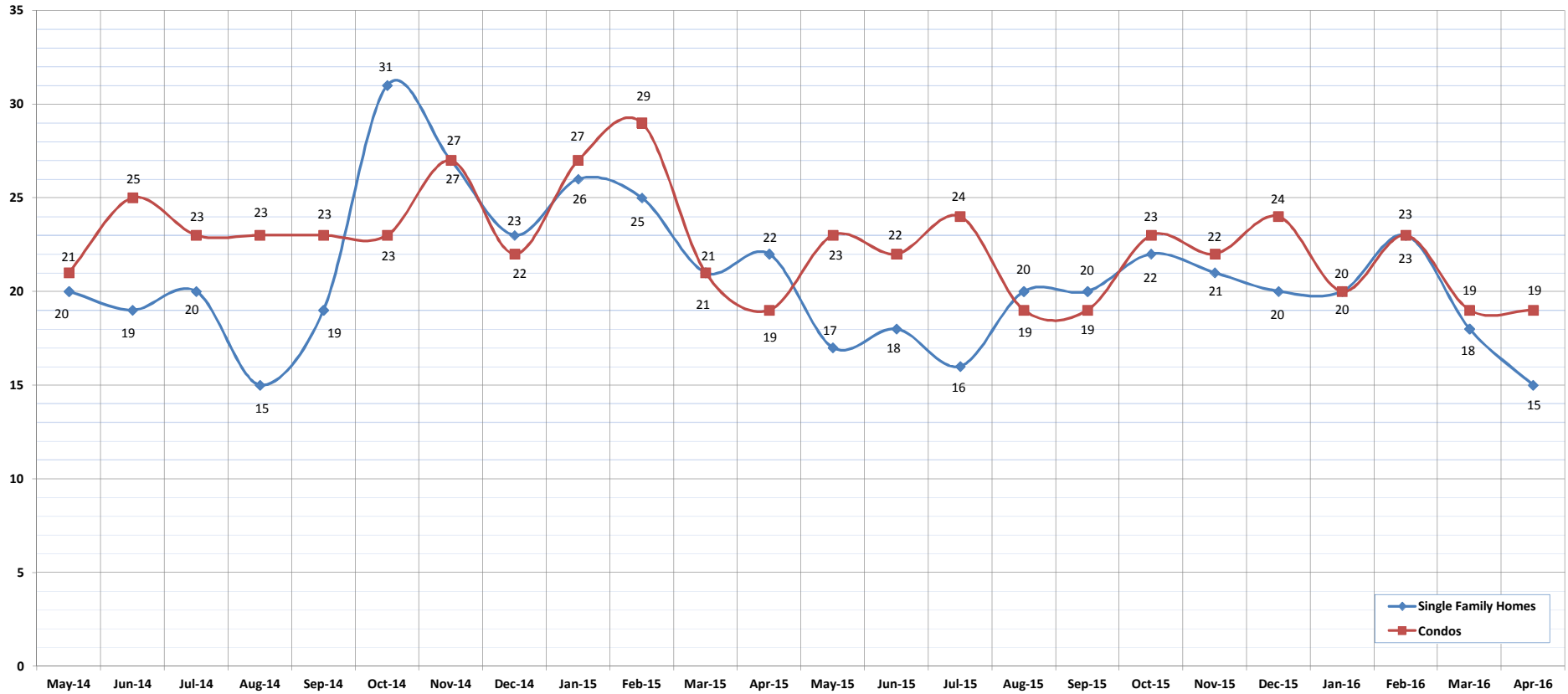


	May-14	Jun-14	Jul-14	Aug-14	Sep-14	Oct-14	Nov-14	Dec-14	Jan-15	Feb-15	Mar-15	Apr-15	May-15	Jun-15	Jul-15	Aug-15	Sep-15	Oct-15	Nov-15	Dec-15	Jan-16	Feb-16	Mar-16	Apr-16
<b>Median Sales Price : SFH</b>	682,000	700,000	683,500	650,000	678,500	690,000	719,500	690,000	675,000	648,000	700,000	674,900	698,000	700,000	710,000	699,000	730,000	720,000	715,500	700,000	733,500	700,000	725,000	720,000
<b>Median Sales Price: Condos</b>	355,000	360,000	351,750	350,000	347,000	352,750	343,000	361,250	381,500	326,000	380,000	370,475	375,000	338,500	350,000	354,000	366,000	370,000	347,500	386,250	374,500	378,444	385,000	389,500

# Median Days on Market

April-16  
OAHU, HAWAII

(The median number of days between when a property is first listed and when an offer is accepted.)



	May-14	Jun-14	Jul-14	Aug-14	Sep-14	Oct-14	Nov-14	Dec-14	Jan-15	Feb-15	Mar-15	Apr-15	May-15	Jun-15	Jul-15	Aug-15	Sep-15	Oct-15	Nov-15	Dec-15	Jan-16	Feb-16	Mar-16	Apr-16
Median Days on Market: SFH	20	19	20	15	19	31	27	23	26	25	21	22	17	18	16	20	20	22	21	20	20	23	18	15
Median Days on Market: Condos	21	25	23	23	23	23	27	22	27	29	21	19	23	22	24	19	19	23	22	24	20	23	19	19

SOURCE: Honolulu Board of REALTORS®, compiled from MLS data.

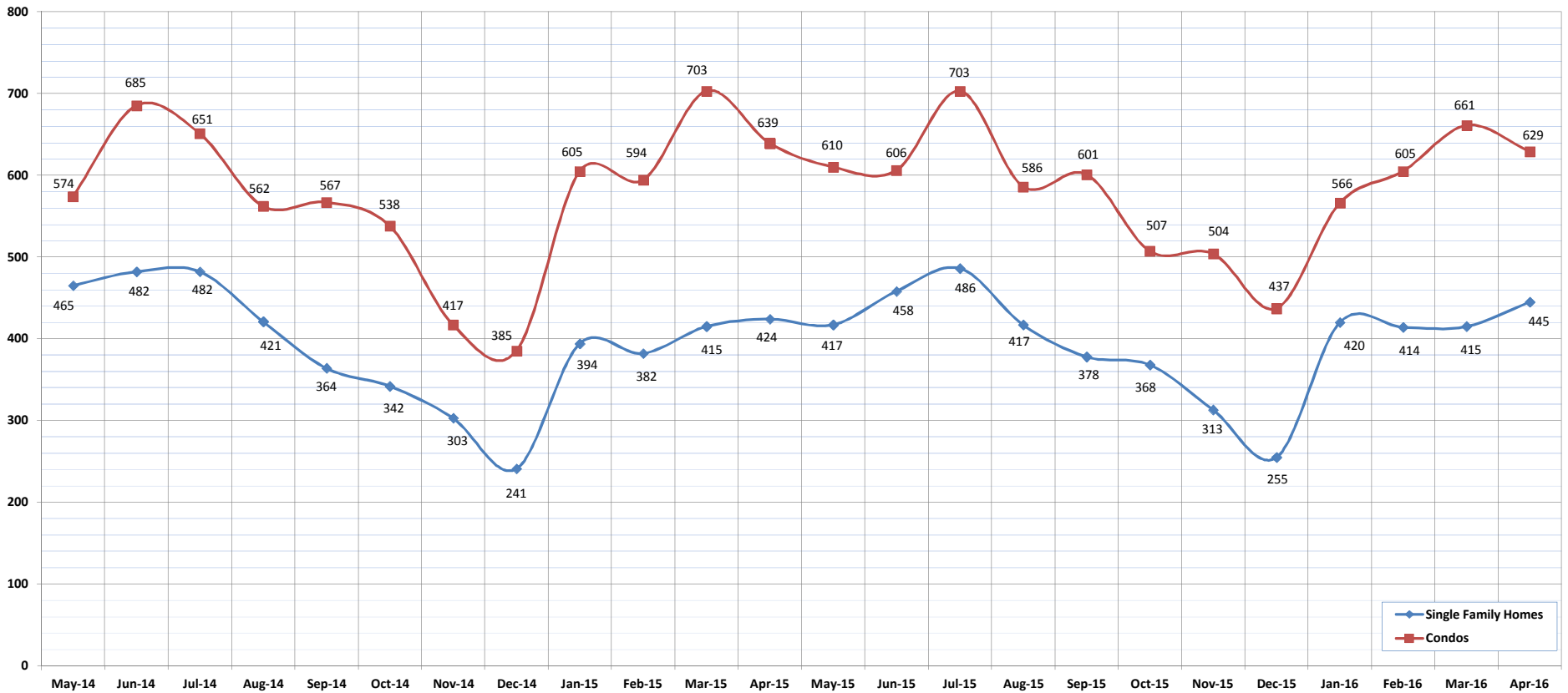


# New Listings

April-16

OAHU, HAWAII

(A count of the properties that have been newly listed on the market in a given month.)



	May-14	Jun-14	Jul-14	Aug-14	Sep-14	Oct-14	Nov-14	Dec-14	Jan-15	Feb-15	Mar-15	Apr-15	May-15	Jun-15	Jul-15	Aug-15	Sep-15	Oct-15	Nov-15	Dec-15	Jan-16	Feb-16	Mar-16	Apr-16
<b>New Listings: Single Family Homes</b>	465	482	482	421	364	342	303	241	394	382	415	424	417	458	486	417	378	368	313	255	420	414	415	445
<b>New Listings: Condos</b>	574	685	651	562	567	538	417	385	605	594	703	639	610	606	703	586	601	507	504	437	566	605	661	629
<b>New Listings: Total</b>	1039	1167	1133	983	931	880	720	626	999	976	1118	1063	1027	1064	1189	1003	979	875	817	692	986	1019	1076	1074

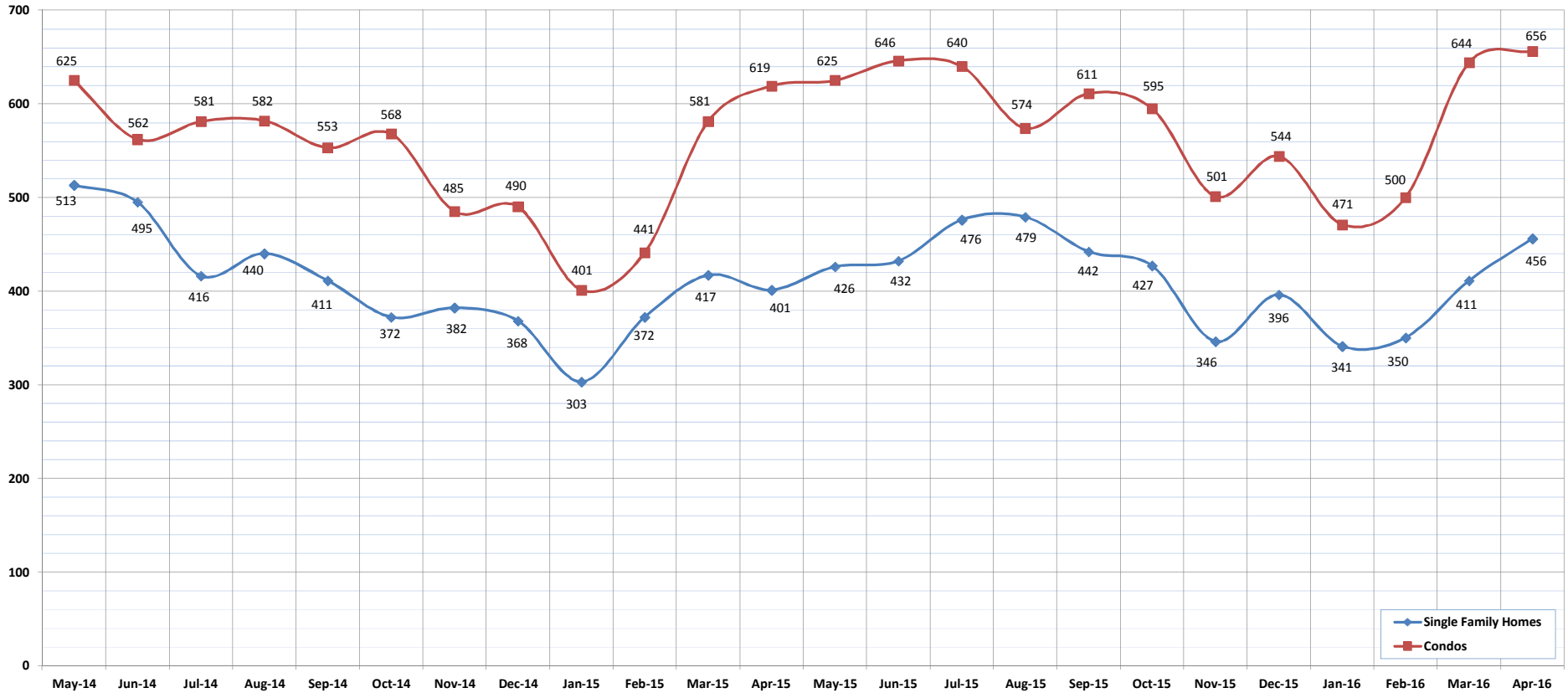
SOURCE: Honolulu Board of REALTORS®, compiled from MLS data.

# Pending Sales

April-16

OAHU, HAWAII

(A count of the properties that have offers accepted on them in a given month.)



	May-14	Jun-14	Jul-14	Aug-14	Sep-14	Oct-14	Nov-14	Dec-14	Jan-15	Feb-15	Mar-15	Apr-15	May-15	Jun-15	Jul-15	Aug-15	Sep-15	Oct-15	Nov-15	Dec-15	Jan-16	Feb-16	Mar-16	Apr-16
<b>Pending Sales: Single Family Homes</b>	513	495	416	440	411	372	382	368	303	372	417	401	426	432	476	479	442	427	346	396	341	350	411	456
<b>Pending Sales: Condos</b>	625	562	581	582	553	568	485	490	401	441	581	619	625	646	640	574	611	595	501	544	471	500	644	656
<b>Pending Sales: Total</b>	1138	1057	997	1022	964	940	867	858	704	813	998	1020	1051	1078	1116	1053	1053	1022	847	940	812	850	1055	1112

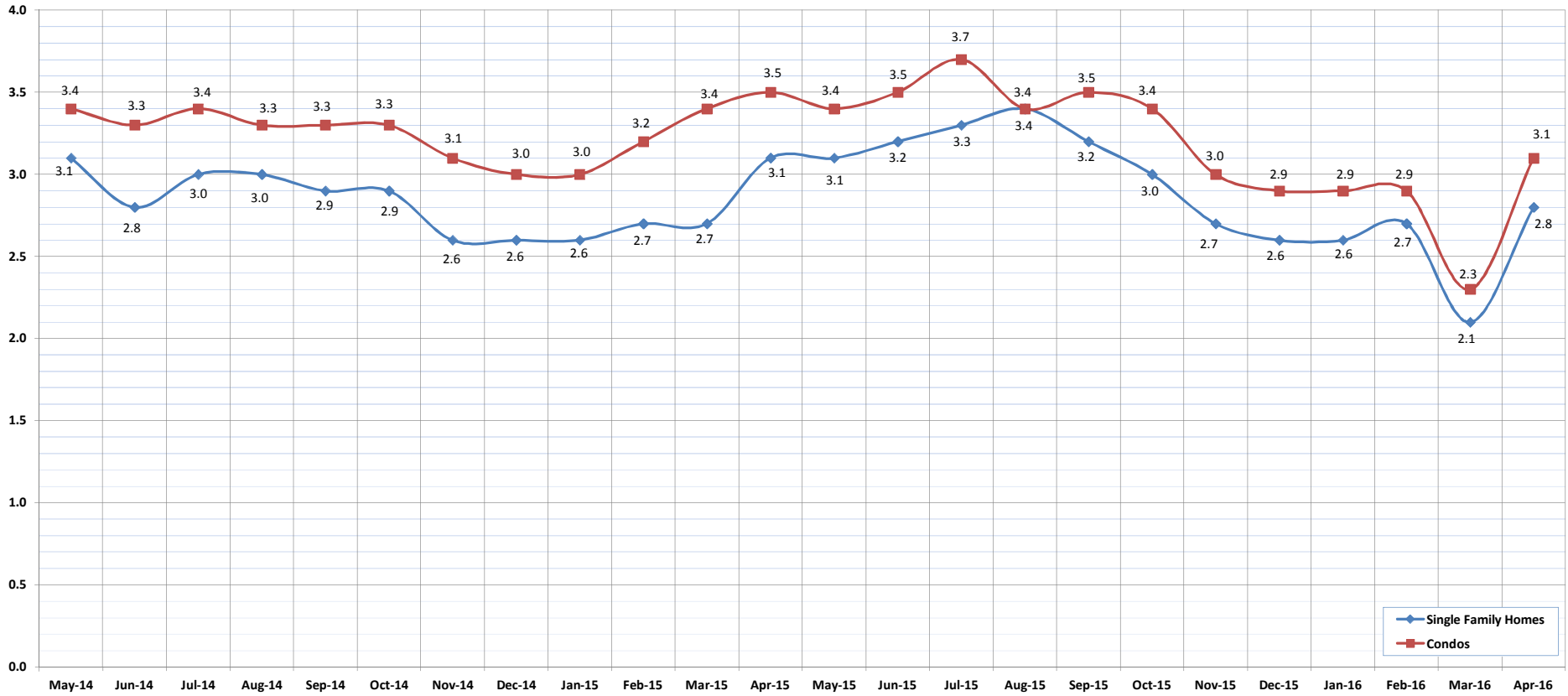
SOURCE: Honolulu Board of REALTORS®, compiled from MLS data.

# Months of Inventory

April-16

OAHU, HAWAII

(Compares the number of active listings available to the average monthly pending sales.)



	May-14	Jun-14	Jul-14	Aug-14	Sep-14	Oct-14	Nov-14	Dec-14	Jan-15	Feb-15	Mar-15	Apr-15	May-15	Jun-15	Jul-15	Aug-15	Sep-15	Oct-15	Nov-15	Dec-15	Jan-16	Feb-16	Mar-16	Apr-16
Month of Inventory : SFH	3.1	2.8	3.0	3.0	2.9	2.9	2.6	2.6	2.6	2.7	2.7	3.1	3.1	3.2	3.3	3.4	3.2	3.0	2.7	2.6	2.6	2.7	2.1	2.8
Months of Inventory: Condos	3.4	3.3	3.4	3.3	3.3	3.3	3.1	3.0	3.0	3.2	3.4	3.5	3.4	3.5	3.7	3.4	3.5	3.4	3.0	2.9	2.9	2.9	2.3	3.1

SOURCE: Honolulu Board of REALTORS®, compiled from MLS data.

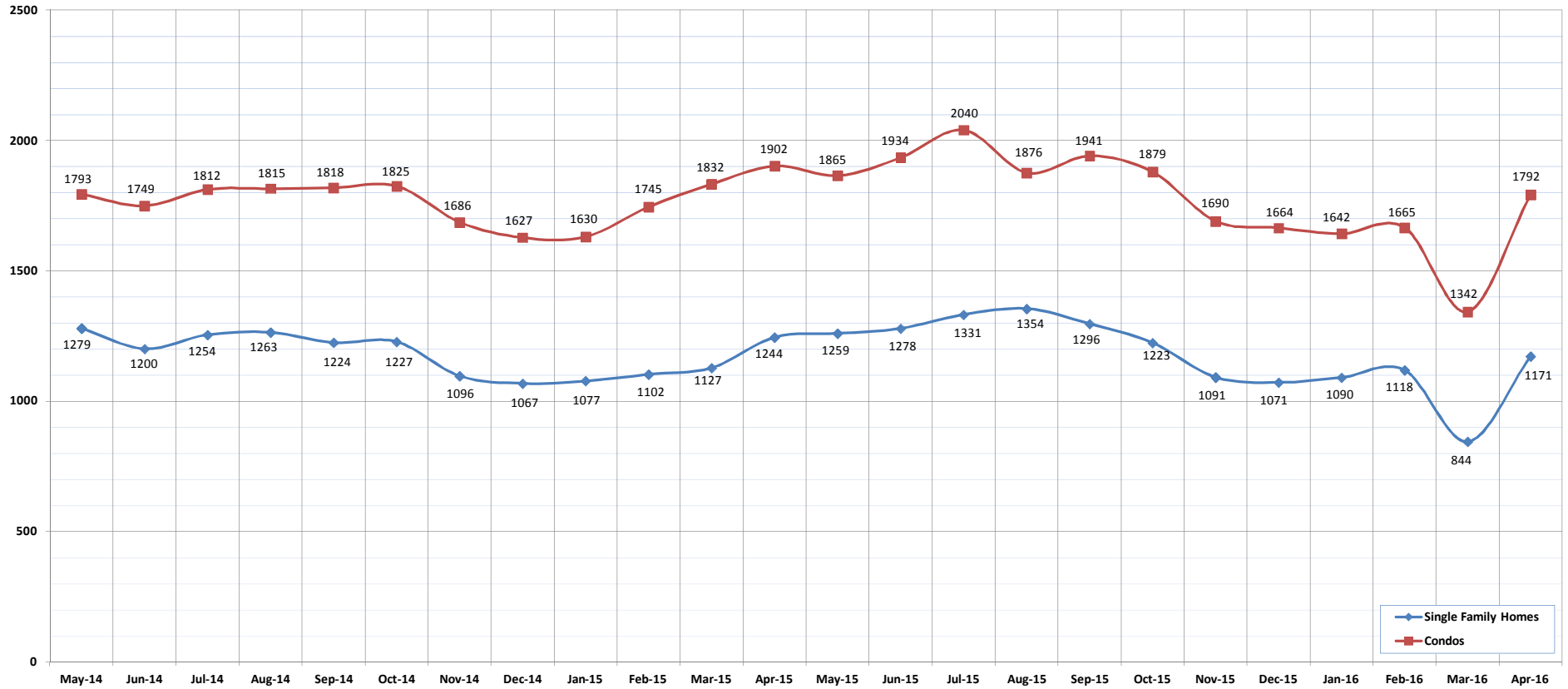




# Active Listings

April-16  
OAHU, HAWAII

(The number of properties available for purchase during a given month.)



	May-14	Jun-14	Jul-14	Aug-14	Sep-14	Oct-14	Nov-14	Dec-14	Jan-15	Feb-15	Mar-15	Apr-15	May-15	Jun-15	Jul-15	Aug-15	Sep-15	Oct-15	Nov-15	Dec-15	Jan-16	Feb-16	Mar-16	Apr-16
Active Listings: Single Family Homes	1279	1200	1254	1263	1224	1227	1096	1067	1077	1102	1127	1244	1259	1278	1331	1354	1296	1223	1091	1071	1090	1118	844	1171
Active Listings: Condos	1793	1749	1812	1815	1818	1825	1686	1627	1630	1745	1832	1902	1865	1934	2040	1876	1941	1879	1690	1664	1642	1665	1342	1792
Active Listings: Total	3072	2949	3066	3078	3042	3052	2782	2694	2707	2847	2959	3146	3124	3212	3371	3230	3237	3102	2781	2735	2732	2783	2186	2963

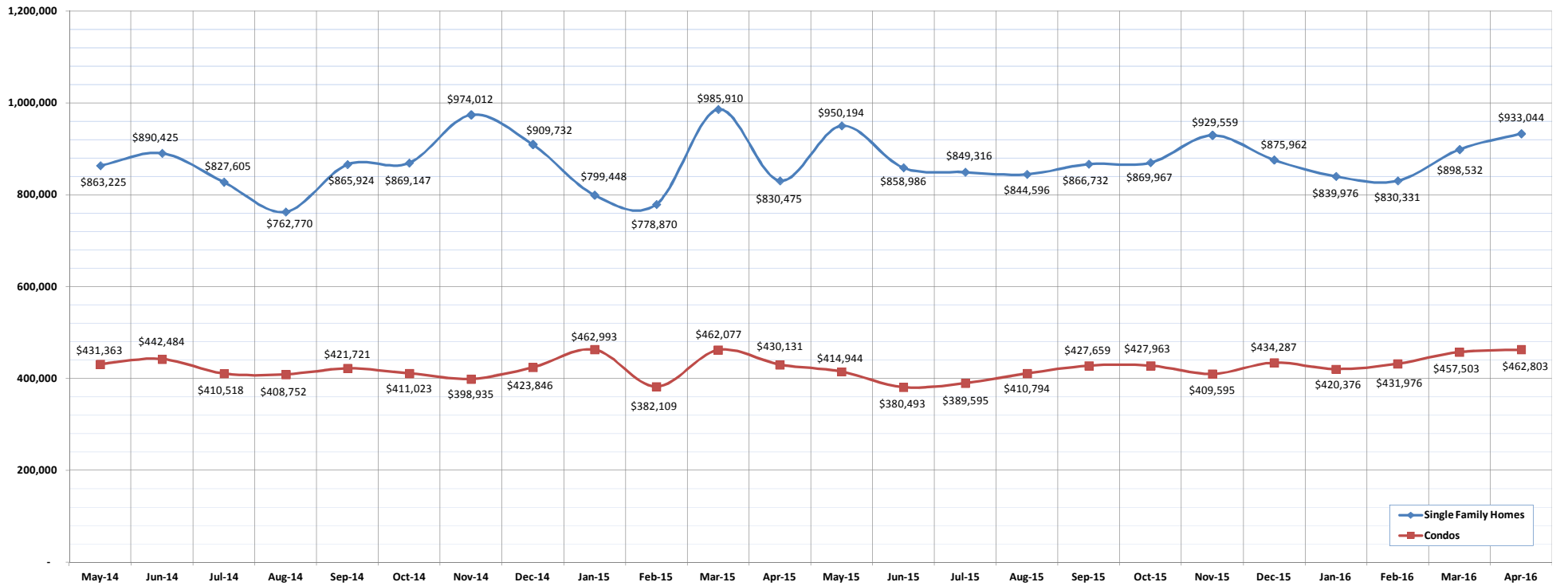
SOURCE: Honolulu Board of REALTORS®, compiled from MLS data.

# Average Sales Price

April-16

OAHU, HAWAII

(The average sales price for all closed sales in a given month.)



	May-14	Jun-14	Jul-14	Aug-14	Sep-14	Oct-14	Nov-14	Dec-14	Jan-15	Feb-15	Mar-15	Apr-15	May-15	Jun-15	Jul-15	Aug-15	Sep-15	Oct-15	Nov-15	Dec-15	Jan-16	Feb-16	Mar-16	Apr-16
Average Sales Price: SFH	863,225	890,425	827,605	762,770	865,924	869,147	974,012	909,732	799,448	778,870	985,910	830,475	950,194	858,986	849,316	844,596	866,732	869,967	929,559	875,962	839,976	830,331	898,532	933,044
Average Sales Price: Condos	431,363	442,484	410,518	408,752	421,721	411,023	398,935	423,846	462,993	382,109	462,077	430,131	414,944	380,493	389,595	410,794	427,659	427,963	409,595	434,287	420,376	431,976	457,503	462,803

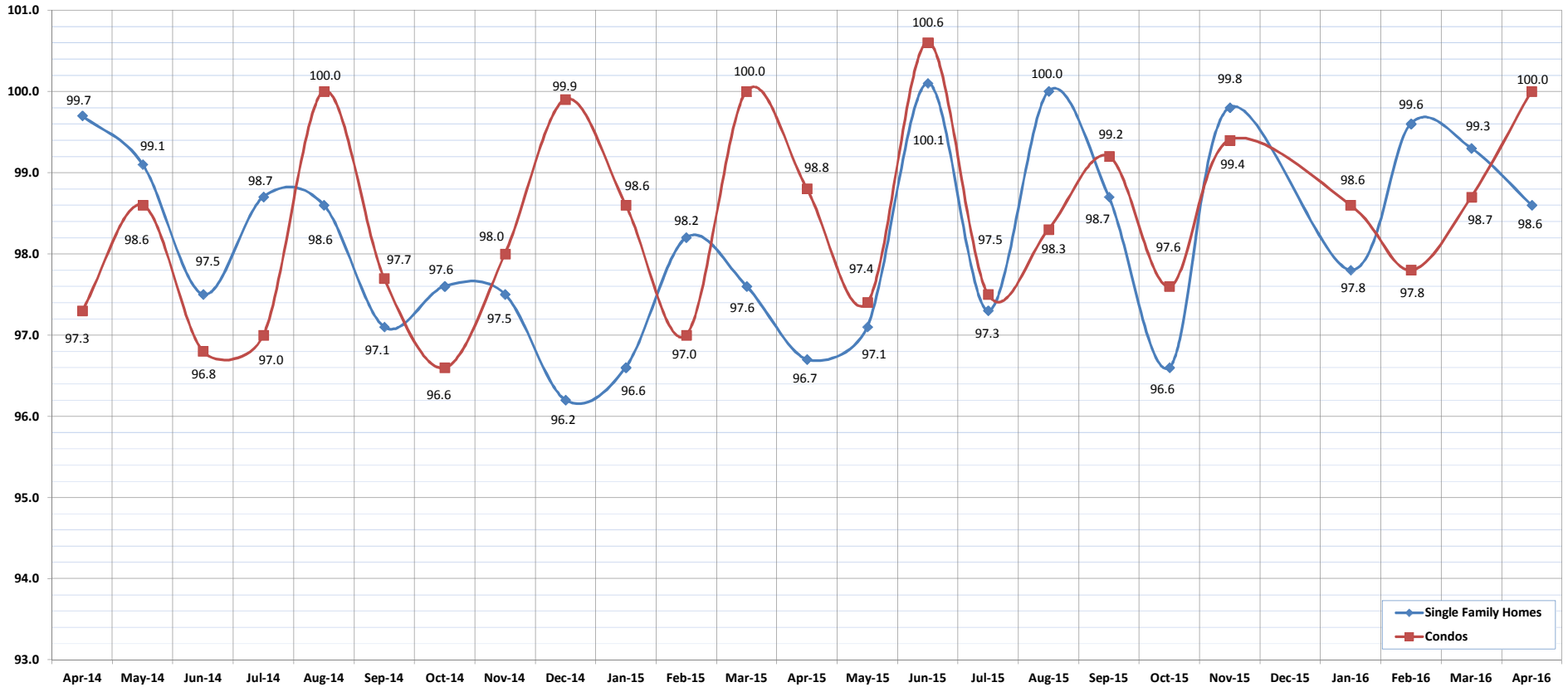
SOURCE: Honolulu Board of REALTORS®, compiled from MLS data.

# Percent of Original List Price Received

April-16

OAHU, HAWAII

(The percentage found when dividing a property's sales price by the original list price.)



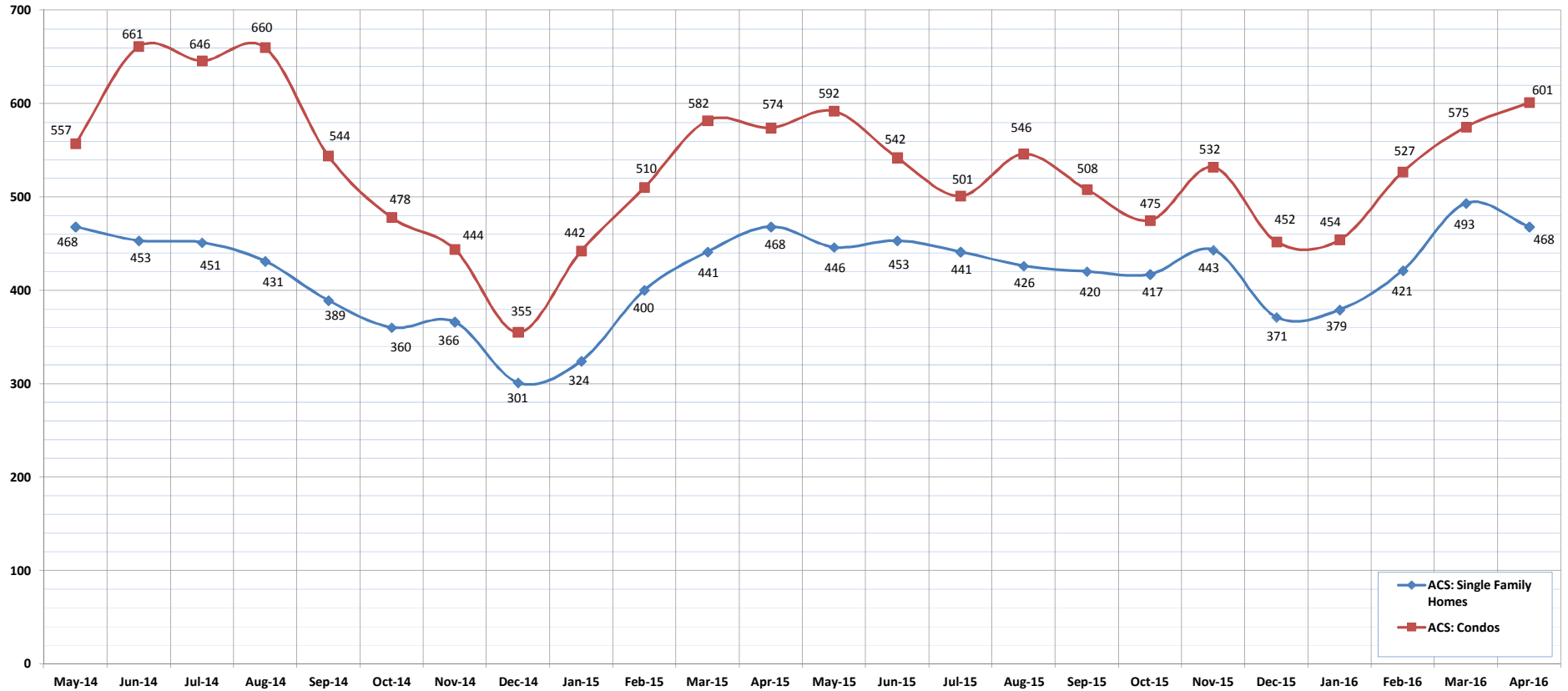
	Apr-14	May-14	Jun-14	Jul-14	Aug-14	Sep-14	Oct-14	Nov-14	Dec-14	Jan-15	Feb-15	Mar-15	Apr-15	May-15	Jun-15	Jul-15	Aug-15	Sep-15	Oct-15	Nov-15	Dec-15	Jan-16	Feb-16	Mar-16	Apr-16
Percent of Original List Price: SFH	99.7	99.1	97.5	98.7	98.6	97.1	97.6	97.5	96.2	96.6	98.2	97.6	96.7	97.1	100.1	97.3	100.0	98.7	96.6	99.8	97.8	99.6	99.3	98.6	
Percent of Original List Price: Condos	97.3	98.6	96.8	97.0	100.0	97.7	96.6	98.0	99.9	98.6	97.0	100.0	98.8	97.4	100.6	97.5	98.3	99.2	97.6	99.4	98.6	97.8	98.7	100.0	

SOURCE: Honolulu Board of REALTORS®, compiled from MLS data.

# Active Continue to Show

April-16  
OAHU, HAWAII

(A count of the properties that are in ACS during the current month.)



	May-14	Jun-14	Jul-14	Aug-14	Sep-14	Oct-14	Nov-14	Dec-14	Jan-15	Feb-15	Mar-15	Apr-15	May-15	Jun-15	Jul-15	Aug-15	Sep-15	Oct-15	Nov-15	Dec-15	Jan-16	Feb-16	Mar-16	Apr-16
ACS: Single Family Homes	468	453	451	431	389	360	366	301	324	400	441	468	446	453	441	426	420	417	443	371	379	421	493	468
ACS: Condos	557	661	646	660	544	478	444	355	442	510	582	574	592	542	501	546	508	475	532	452	454	527	575	601

SOURCE: Honolulu Board of REALTORS®, compiled from MLS data.

# Housing Supply Overview

April 2016

Single Family Homes	Pending Sales			Days on Market			Percentage of Original Price Received			Inventory of Homes for Sale			Months Supply of Inventory		
	Apr-16	Apr-15	%	Apr-16	Apr-15	%	Apr-16	Apr-15	%	Apr-16	Apr-15	%	Apr-16	Apr-15	%
\$350,000 and Below	132	163	-19.0%	36	27	33.3%	94.8%	98.4%	-3.7%	27	48	-43.8%	2.2	3.2	-31.3%
\$350,001 - \$475,000	296	350	-15.4%	20	19	5.3%	97.2%	98.8%	-1.6%	51	82	-37.8%	1.9	2.5	-24.0%
\$475,001 - \$550,000	373	406	-8.1%	14	19	-26.3%	98.8%	98.4%	0.4%	71	92	-22.8%	2.2	2.6	-15.4%
\$550,001 - \$650,000	683	658	3.8%	14	22	-36.4%	98.8%	98.3%	0.5%	121	137	-11.7%	2.2	2.6	-15.4%
\$650,001 - \$800,000	913	713	28.1%	19	23	-17.4%	98.4%	97.7%	0.7%	199	221	-10.0%	2.9	3.8	-23.7%
\$800,001 - \$1.1M	750	621	20.8%	23	21	9.5%	97.2%	97.9%	-0.7%	203	203	0.0%	3.6	4.1	-12.2%
\$1.1M - \$1.9M	451	388	16.2%	29	33	-12.1%	95.1%	95.8%	-0.7%	242	224	8.0%	6.7	7.3	-8.2%
\$1.9M and Above	175	156	12.2%	56	63	-11.1%	93.4%	93.5%	-0.1%	257	237	8.4%	18.9	18.6	1.6%
<b>All Single Family Homes</b>	<b>3773</b>	<b>3455</b>	<b>9.2%</b>	<b>19</b>	<b>22</b>	<b>-13.6%</b>	<b>98.6%</b>	<b>97.6%</b>	<b>1.0%</b>	<b>1171</b>	<b>1244</b>	<b>-5.9%</b>	<b>3.9</b>	<b>4.3</b>	<b>-9.3%</b>

Condos	Pending Sales			Days on Market			Percentage of Original Price Received			Inventory of Homes for Sale			Months Supply of Inventory		
	Apr-16	Apr-15	%	Apr-16	Apr-15	%	Apr-16	Apr-15	%	Apr-16	Apr-15	%	Apr-16	Apr-15	%
\$150,000 and below	397	370	7.3%	46	32	43.8%	89.8%	95.2%	-5.7%	159	172	-7.6%	4.8	4.9	-2.0%
\$150,001 - \$200,000	335	378	-11.4%	33	35	-5.7%	96.2%	95.2%	1.1%	118	138	-14.5%	3.9	4.0	-2.5%
\$200,001 - \$250,000	418	470	-11.1%	27	27	0.0%	96.4%	96.5%	-0.1%	114	139	-18.0%	3.0	3.1	-3.2%
\$250,001 - \$300,000	674	652	3.4%	21	24	-12.5%	98.1%	97.4%	0.7%	166	204	-18.6%	3.0	3.6	-16.7%
\$300,001 - \$375,000	1044	901	15.9%	16	23	-30.4%	98.0%	97.3%	0.7%	192	302	-36.4%	2.3	4.1	-43.9%
\$375,001 - \$475,000	1095	960	14.1%	16	19	-15.8%	98.7%	98.0%	0.7%	261	263	-0.8%	3.1	3.5	-11.4%
\$475,001 - \$700,000	1013	841	20.5%	19	26	-26.9%	98.0%	98.1%	-0.1%	342	329	4.0%	4.5	4.8	-6.3%
\$700,001 and above	500	497	0.6%	45	45	0.0%	95.1%	94.7%	0.4%	440	355	23.9%	10.4	8.9	16.9%
<b>All Condos</b>	<b>5476</b>	<b>5069</b>	<b>8.0%</b>	<b>21</b>	<b>24</b>	<b>-12.5%</b>	<b>98.7%</b>	<b>98.2%</b>	<b>0.5%</b>	<b>1792</b>	<b>1902</b>	<b>-5.8%</b>	<b>4.0</b>	<b>4.4</b>	<b>-9.1%</b>

SOURCE: Honolulu Board of REALTORS®, compiled from MLS data.

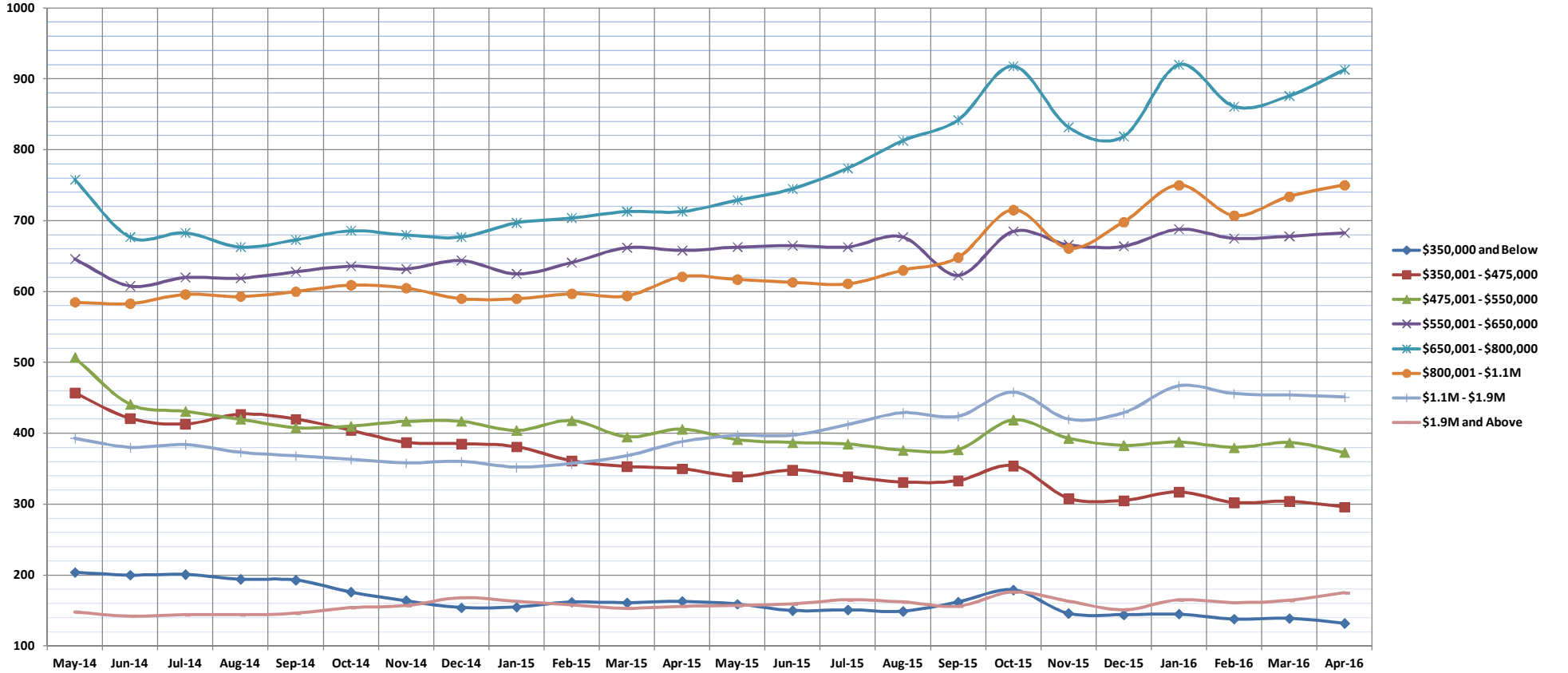


# Pending Sales

Apr-16

Single Family Homes: Monthly, by Price Range

(A count of properties that have offers accepted on them in a given month. Based on a 12 month rolling total.)



	May-14	Jun-14	Jul-14	Aug-14	Sep-14	Oct-14	Nov-14	Dec-14	Jan-15	Feb-15	Mar-15	Apr-15	May-15	Jun-15	Jul-15	Aug-15	Sep-15	Oct-15	Nov-15	Dec-15	Jan-16	Feb-16	Mar-16	Apr-16
\$350,000 and Below	204	200	201	194	193	176	164	154	155	162	161	163	159	150	151	149	162	179	146	144	145	138	139	132
\$350,001 - \$475,000	457	421	413	427	420	404	387	385	381	361	353	350	339	348	339	331	333	354	308	305	317	302	304	296
\$475,001 - \$550,000	507	441	431	420	408	410	417	417	404	418	395	406	391	387	385	376	377	419	393	383	388	380	387	373
\$550,001 - \$650,000	646	608	620	619	628	636	632	644	625	641	662	658	663	665	663	677	623	685	666	664	688	675	678	683
\$650,001 - \$800,000	758	677	683	663	673	686	680	677	697	704	713	713	729	745	774	813	842	918	832	819	920	861	876	913
\$800,001 - \$1.1M	585	583	596	593	600	609	605	590	590	597	594	621	617	613	611	630	648	715	661	698	750	707	734	750
\$1.1M - \$1.9M	393	380	384	373	368	363	358	360	352	357	368	388	397	397	412	429	424	458	420	429	467	456	454	451
\$1.9M and Above	148	142	144	144	146	154	157	168	163	158	153	156	157	159	165	162	156	176	163	151	165	161	164	175
All Single Family Homes	3698	3452	3472	3433	3436	3438	3400	3395	3367	3398	3399	3455	3452	3464	3500	3567	3565	3904	3589	3593	3840	3680	3736	3773

SOURCE: Honolulu Board of REALTORS®, compiled from MLS data.

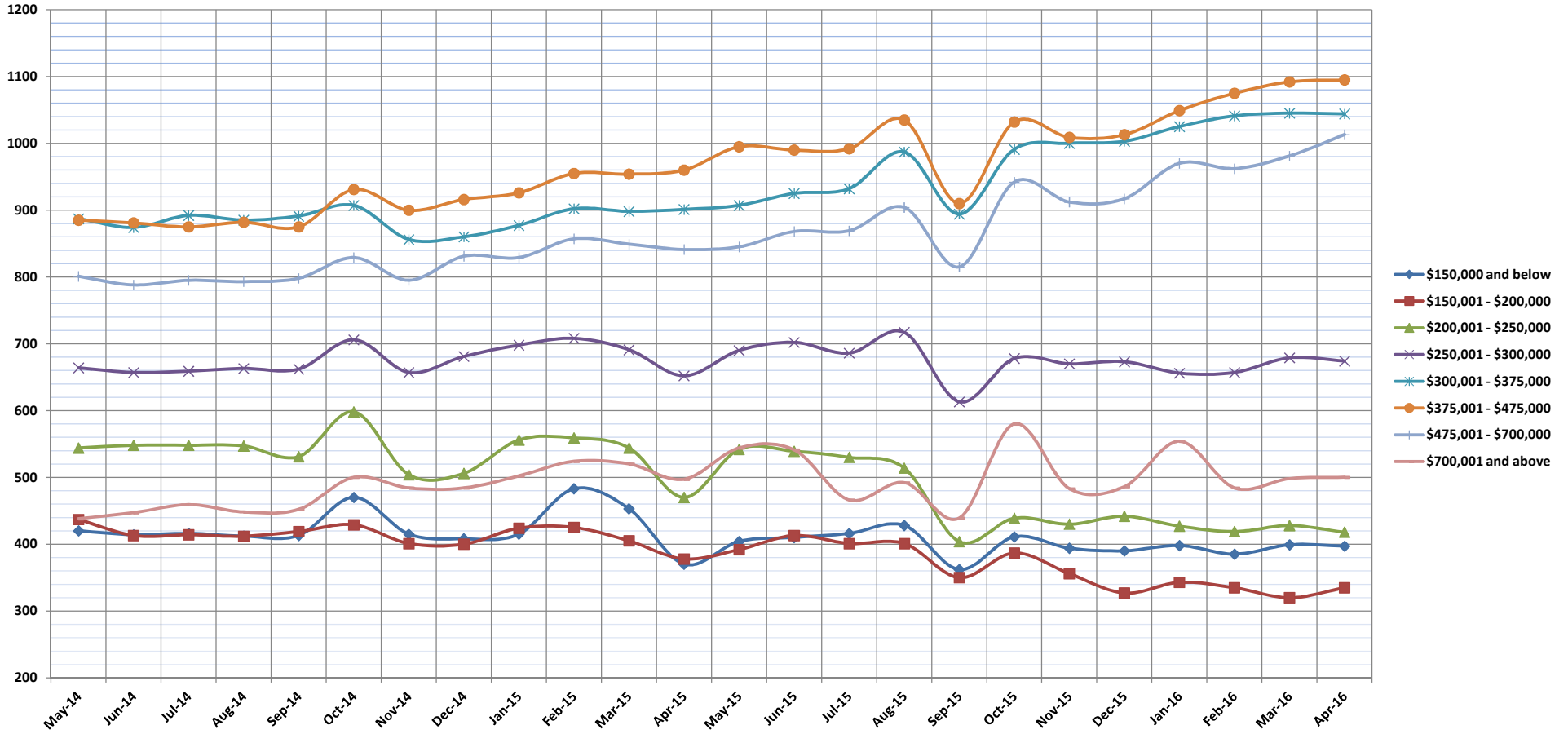


# Pending Sales

Apr-16

Condos: Monthly, by Price Range

(A count of properties that have offers accepted on them in a given month. Based on a 12 month rolling total.)



	May-14	Jun-14	Jul-14	Aug-14	Sep-14	Oct-14	Nov-14	Dec-14	Jan-15	Feb-15	Mar-15	Apr-15	May-15	Jun-15	Jul-15	Aug-15	Sep-15	Oct-15	Nov-15	Dec-15	Jan-16	Feb-16	Mar-16	Apr-16
<b>\$150,000 and below</b>	420	414	416	412	413	470	415	408	415	483	453	370	404	410	416	428	362	411	394	390	398	385	399	397
<b>\$150,001 - \$200,000</b>	437	413	414	412	419	429	401	400	424	425	405	378	392	413	401	401	350	387	356	327	343	335	320	335
<b>\$200,001 - \$250,000</b>	544	548	548	547	531	598	504	506	556	559	544	470	542	539	530	514	404	439	430	442	427	419	428	418
<b>\$250,001 - \$300,000</b>	664	657	659	663	662	706	657	681	698	708	691	652	690	702	686	717	613	678	670	673	656	657	679	674
<b>\$300,001 - \$375,000</b>	887	874	892	885	891	907	856	860	877	902	898	901	907	925	932	987	894	991	1000	1003	1025	1041	1045	1044
<b>\$375,001 - \$475,000</b>	885	881	875	882	875	931	900	916	926	955	954	960	995	990	992	1035	910	1032	1009	1013	1049	1075	1092	1095
<b>\$475,001 - \$700,000</b>	801	788	795	793	798	829	795	831	829	857	849	841	845	868	869	904	815	942	912	917	970	962	981	1013
<b>\$700,001 and above</b>	438	447	459	448	452	500	484	484	502	524	520	497	544	541	466	492	439	580	483	486	554	484	498	500
<b>All Condos</b>	5076	5022	5058	5042	5041	5370	5012	5086	5227	6270	5314	5069	5319	5388	5292	5478	4787	5460	5254	5251	5422	5358	5442	5476

SOURCE: Honolulu Board of REALTORS®, compiled from MLS data.

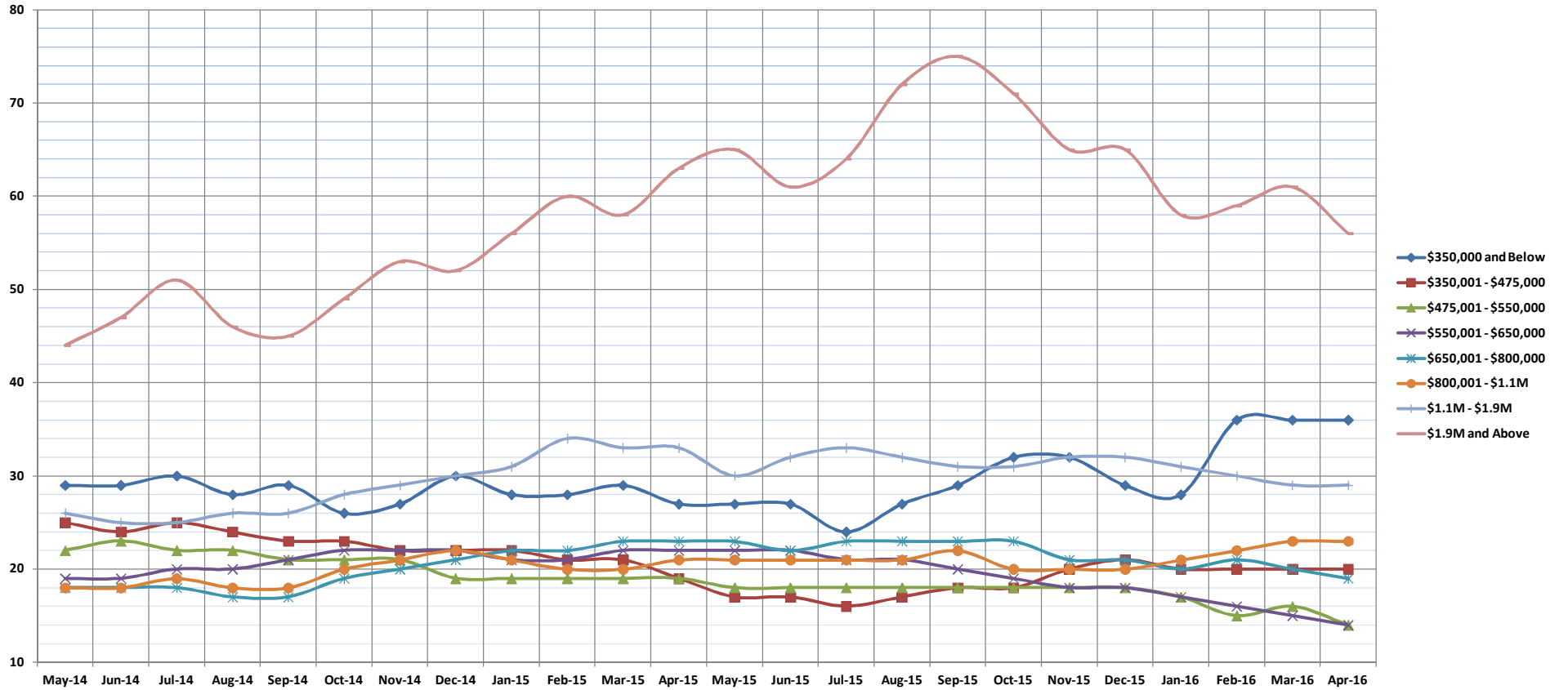


# Days on Market Until Sale

Apr-16

Single Family Homes: Monthly, by Price Range

(The median number of days between when a property is first listed and when an offer is accepted. Based on a 12 month rolling median.)



	May-14	Jun-14	Jul-14	Aug-14	Sep-14	Oct-14	Nov-14	Dec-14	Jan-15	Feb-15	Mar-15	Apr-15	May-15	Jun-15	Jul-15	Aug-15	Sep-15	Oct-15	Nov-15	Dec-15	Jan-16	Feb-16	Mar-16	Apr-16
\$350,000 and Below	29	29	30	28	29	26	27	30	28	28	29	27	27	27	24	27	29	32	32	29	28	36	36	36
\$350,001 - \$475,000	25	24	25	24	23	23	22	22	22	21	21	19	17	17	16	17	18	18	18	20	21	20	20	20
\$475,001 - \$550,000	22	23	22	22	21	21	21	19	19	19	19	19	18	18	18	18	18	18	18	18	17	15	16	14
\$550,001 - \$650,000	19	19	20	20	21	22	22	21	21	21	22	22	22	22	21	21	20	19	18	18	17	16	15	14
\$650,001 - \$800,000	18	18	18	17	17	19	20	21	22	22	22	22	23	23	23	23	23	23	23	21	21	20	21	20
\$800,001 - \$1.1M	18	18	19	18	18	20	21	22	21	20	20	21	21	21	21	21	22	20	20	20	21	22	23	23
\$1.1M - \$1.9M	26	25	25	26	26	28	29	30	31	34	33	33	30	32	33	32	31	31	32	32	31	30	29	29
\$1.9M and Above	44	47	51	46	45	49	53	52	56	60	58	63	65	61	64	72	75	71	65	65	58	59	61	56
All Single Family Homes	20	20	20	20	20	21	22	22	22	22	22	22	22	22	22	22	22	21	21	21	20	20	20	19

SOURCE: Honolulu Board of REALTORS®, compiled from MLS data.



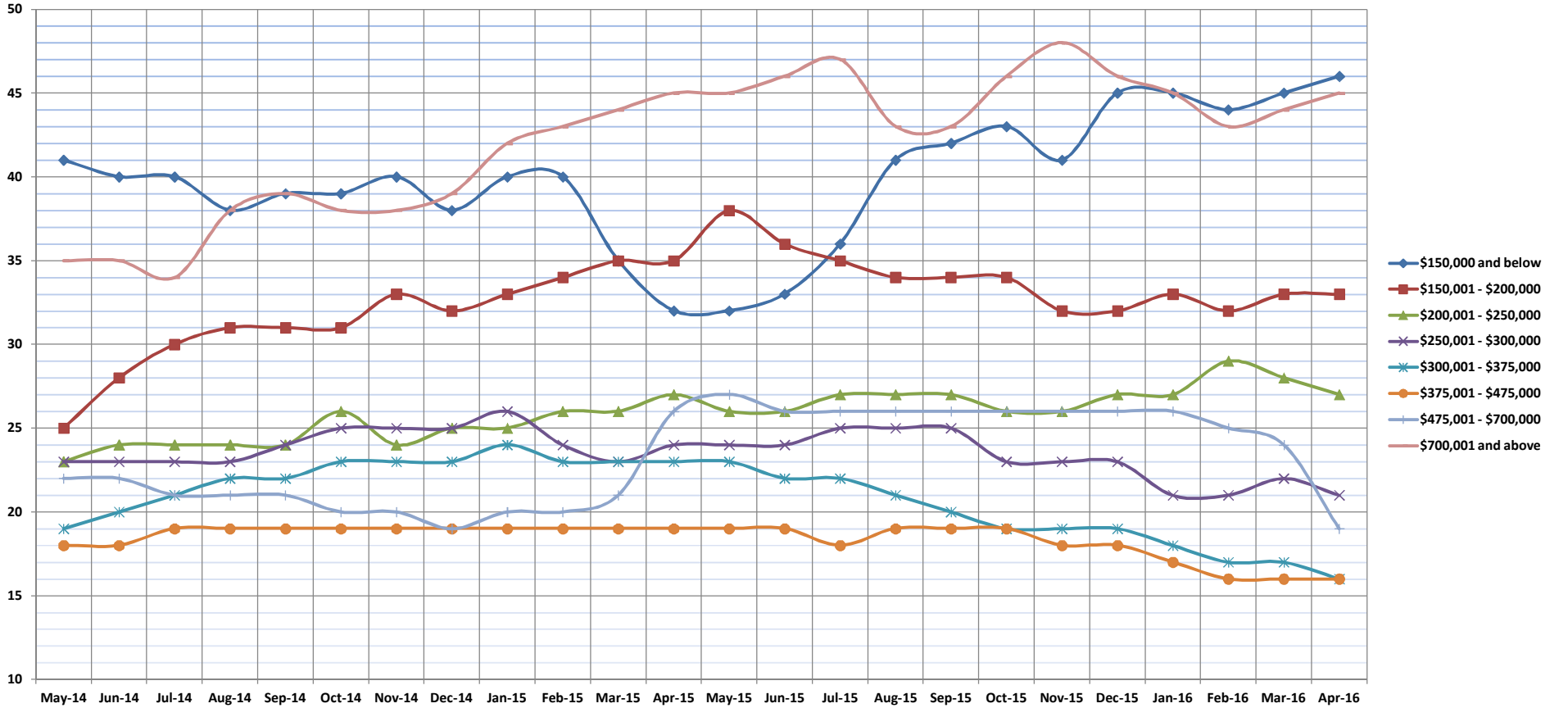


# Days on Market Until Sale

Apr-16

Condos: Monthly, by Price Range

(The median number of days between when a property is first listed and when an offer is accepted. Based on a 12 month rolling median.)



	May-14	Jun-14	Jul-14	Aug-14	Sep-14	Oct-14	Nov-14	Dec-14	Jan-15	Feb-15	Mar-15	Apr-15	May-15	Jun-15	Jul-15	Aug-15	Sep-15	Oct-15	Nov-15	Dec-15	Jan-16	Feb-16	Mar-16	Apr-16	
\$150,000 and below	41	40	40	38	39	39	40	38	40	40	35	32	32	33	36	41	42	43	41	45	45	44	45	46	
\$150,001 - \$200,000	25	28	30	31	31	31	33	32	33	34	35	35	38	36	35	34	34	34	32	32	33	32	33	33	
\$200,001 - \$250,000	23	24	24	24	24	26	24	25	25	26	26	27	26	26	27	27	27	26	26	27	27	29	28	27	
\$250,001 - \$300,000	23	23	23	23	24	25	25	25	26	24	23	24	24	24	25	25	25	23	23	23	23	21	21	21	
\$300,001 - \$375,000	19	20	21	22	22	23	23	23	24	23	23	23	23	22	22	21	20	19	19	19	18	17	17	16	
\$375,001 - \$475,000	18	18	19	19	19	19	19	19	19	19	19	19	19	19	18	19	19	19	19	18	18	17	16	16	
\$475,001 - \$700,000	22	22	21	21	21	20	20	19	20	20	21	26	27	26	26	26	26	26	26	26	26	26	25	24	19
\$700,001 and above	35	35	34	38	39	38	38	39	42	43	44	45	45	46	47	43	43	46	48	46	45	43	44	45	
All Condos	23	23	23	24	24	24	25	24	25	24	24	24	24	24	24	23	23	23	23	23	22	22	21	21	

SOURCE: Honolulu Board of REALTORS®, compiled from MLS data.

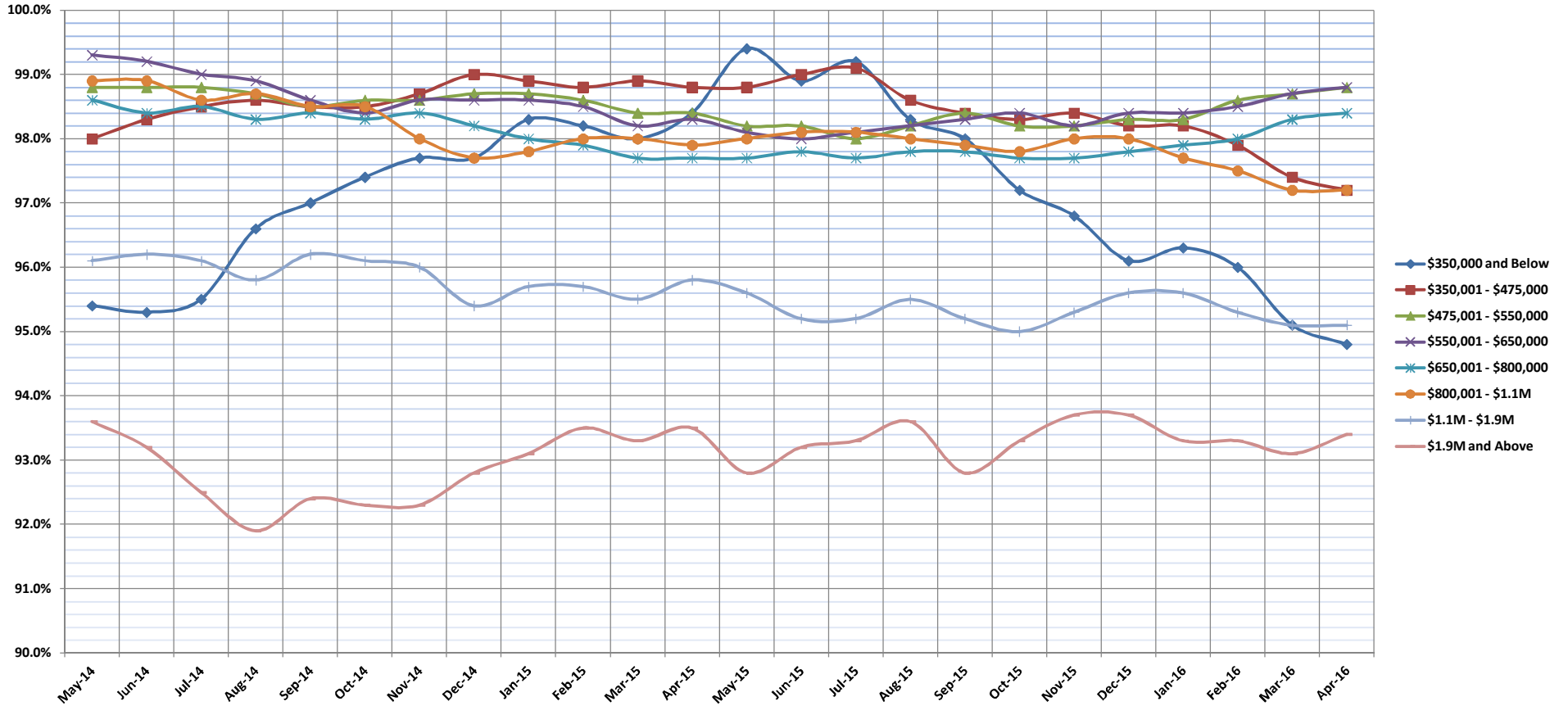


# Percentage of Original Price Received

Apr-16

Single Family Homes: Monthly, by Price Range

(The average percentage found when dividing a property's sales price by the original list price. Based on a rolling 12 month average.)



	May-14	Jun-14	Jul-14	Aug-14	Sep-14	Oct-14	Nov-14	Dec-14	Jan-15	Feb-15	Mar-15	Apr-15	May-15	Jun-15	Jul-15	Aug-15	Sep-15	Oct-15	Nov-15	Dec-15	Jan-16	Feb-16	Mar-16	Apr-16	
<b>\$350,000 and Below</b>	95.4%	95.3%	95.5%	96.6%	97.0%	97.4%	97.7%	97.7%	98.3%	98.2%	98.0%	98.4%	99.4%	98.9%	99.2%	98.3%	98.0%	97.2%	96.8%	96.1%	96.3%	96.0%	95.1%	94.8%	
<b>\$350,001 - \$475,000</b>	98.0%	98.3%	98.5%	98.6%	98.5%	98.5%	98.7%	99.0%	98.9%	98.8%	98.9%	98.8%	98.8%	99.0%	99.1%	98.6%	98.4%	98.3%	98.4%	98.2%	98.2%	98.4%	98.2%	97.9%	97.2%
<b>\$475,001 - \$550,000</b>	98.8%	98.8%	98.8%	98.7%	98.5%	98.6%	98.6%	98.7%	98.7%	98.6%	98.4%	98.4%	98.2%	98.2%	98.0%	98.2%	98.4%	98.2%	98.2%	98.3%	98.3%	98.6%	98.7%	98.8%	
<b>\$550,001 - \$650,000</b>	99.3%	99.2%	99.0%	98.9%	98.6%	98.4%	98.6%	98.6%	98.6%	98.5%	98.2%	98.3%	98.1%	98.0%	98.1%	98.2%	98.3%	98.4%	98.4%	98.2%	98.4%	98.4%	98.5%	98.7%	98.8%
<b>\$650,001 - \$800,000</b>	98.6%	98.4%	98.5%	98.3%	98.4%	98.3%	98.4%	98.2%	98.0%	97.9%	97.7%	97.7%	97.7%	97.8%	97.7%	97.8%	97.8%	97.7%	97.7%	97.7%	97.7%	97.8%	97.9%	98.0%	98.4%
<b>\$800,001 - \$1.1M</b>	98.9%	98.9%	98.6%	98.7%	98.5%	98.5%	98.0%	97.7%	97.8%	98.0%	98.0%	97.9%	98.0%	98.1%	98.1%	98.0%	97.9%	97.8%	98.0%	98.0%	97.7%	97.5%	97.2%	97.2%	
<b>\$1.1M - \$1.9M</b>	96.1%	96.2%	96.1%	95.8%	96.2%	96.1%	96.0%	95.4%	95.7%	95.7%	95.5%	95.8%	95.6%	95.2%	95.2%	95.5%	95.2%	95.0%	95.3%	95.6%	95.6%	95.3%	95.1%	95.1%	
<b>\$1.9M and Above</b>	93.6%	93.2%	92.5%	91.9%	92.4%	92.3%	92.3%	92.8%	93.1%	93.5%	93.3%	93.5%	92.8%	93.2%	93.3%	93.6%	92.8%	93.3%	93.7%	93.7%	93.3%	93.3%	93.1%	93.4%	
<b>All Single Family Homes</b>	99.3%	99.2%	99.1%	99.1%	99.0%	98.8%	98.6%	98.3%	98.1%	98.2%	97.9%	97.6%	97.5%	97.7%	97.6%	97.7%	97.8%	97.7%	97.4%	98.1%	98.2%	98.3%	98.5%	98.6%	

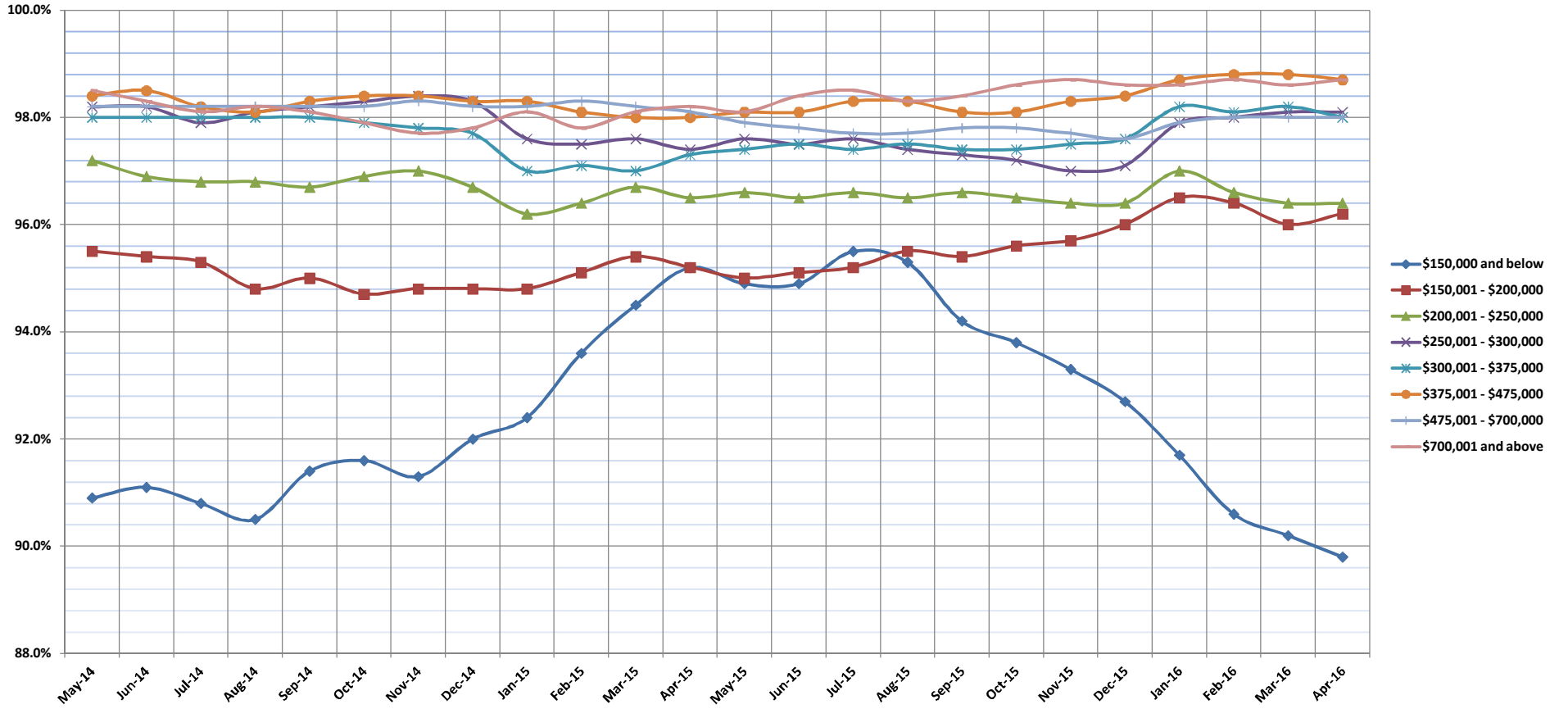
SOURCE: Honolulu Board of REALTORS®, compiled from MLS data.

# Percentage of Original Price Received

Apr-16

Condos: Monthly, by Price Range

(The average percentage found when dividing a property's sales price by the original list price. Based on a rolling 12 month average.)



	May-14	Jun-14	Jul-14	Aug-14	Sep-14	Oct-14	Nov-14	Dec-14	Jan-15	Feb-15	Mar-15	Apr-15	May-15	Jun-15	Jul-15	Aug-15	Sep-15	Oct-15	Nov-15	Dec-15	Jan-16	Feb-16	Mar-16	Apr-16	
<b>\$150,000 and below</b>	90.9%	91.1%	90.8%	90.5%	91.4%	91.6%	91.3%	92.0%	92.4%	93.6%	94.5%	95.2%	94.9%	94.9%	95.5%	95.3%	94.2%	93.8%	93.3%	92.7%	91.7%	90.6%	90.2%	89.8%	
<b>\$150,001 - \$200,000</b>	95.5%	95.4%	95.3%	94.8%	95.0%	94.7%	94.8%	94.8%	94.8%	95.1%	95.4%	95.2%	95.0%	95.1%	95.2%	95.5%	95.4%	95.6%	95.7%	96.0%	96.5%	96.4%	96.0%	96.2%	
<b>\$200,001 - \$250,000</b>	97.2%	96.9%	96.8%	96.8%	96.7%	96.9%	97.0%	96.7%	96.2%	96.4%	96.7%	96.5%	96.6%	96.5%	96.6%	96.5%	96.6%	96.5%	96.4%	96.4%	97.0%	96.6%	96.4%	96.4%	
<b>\$250,001 - \$300,000</b>	98.2%	98.2%	97.9%	98.1%	98.2%	98.3%	98.4%	98.3%	97.6%	97.5%	97.6%	97.4%	97.6%	97.5%	97.6%	97.4%	97.3%	97.2%	97.0%	97.1%	97.9%	98.0%	98.1%	98.1%	
<b>\$300,001 - \$375,000</b>	98.0%	98.0%	98.0%	98.0%	98.0%	97.9%	97.8%	97.7%	97.0%	97.1%	97.0%	97.3%	97.4%	97.5%	97.4%	97.5%	97.4%	97.4%	97.4%	97.4%	97.5%	97.6%	98.2%	98.1%	98.0%
<b>\$375,001 - \$475,000</b>	98.4%	98.5%	98.2%	98.1%	98.3%	98.4%	98.4%	98.3%	98.3%	98.1%	98.0%	98.0%	98.1%	98.1%	98.3%	98.3%	98.1%	98.1%	98.3%	98.4%	98.7%	98.8%	98.8%	98.7%	
<b>\$475,001 - \$700,000</b>	98.2%	98.2%	98.2%	98.2%	98.2%	98.2%	98.3%	98.2%	98.2%	98.3%	98.2%	98.3%	98.2%	98.1%	97.9%	97.8%	97.7%	97.7%	97.8%	97.8%	97.7%	97.6%	97.9%	98.0%	98.0%
<b>\$700,001 and above</b>	96.6%	96.2%	96.4%	95.1%	95.0%	95.1%	95.2%	95.2%	94.8%	94.7%	94.7%	94.7%	95.0%	95.6%	95.4%	96.3%	96.4%	96.4%	96.5%	96.8%	96.4%	96.0%	95.2%	95.1%	
<b>All Condos</b>	98.5%	98.3%	98.1%	98.2%	98.1%	97.9%	97.7%	97.8%	98.1%	97.8%	98.1%	98.2%	98.1%	98.4%	98.5%	98.3%	98.4%	98.6%	98.7%	98.6%	98.6%	98.7%	98.6%	98.7%	

SOURCE: Honolulu Board of REALTORS®, compiled from MLS data.

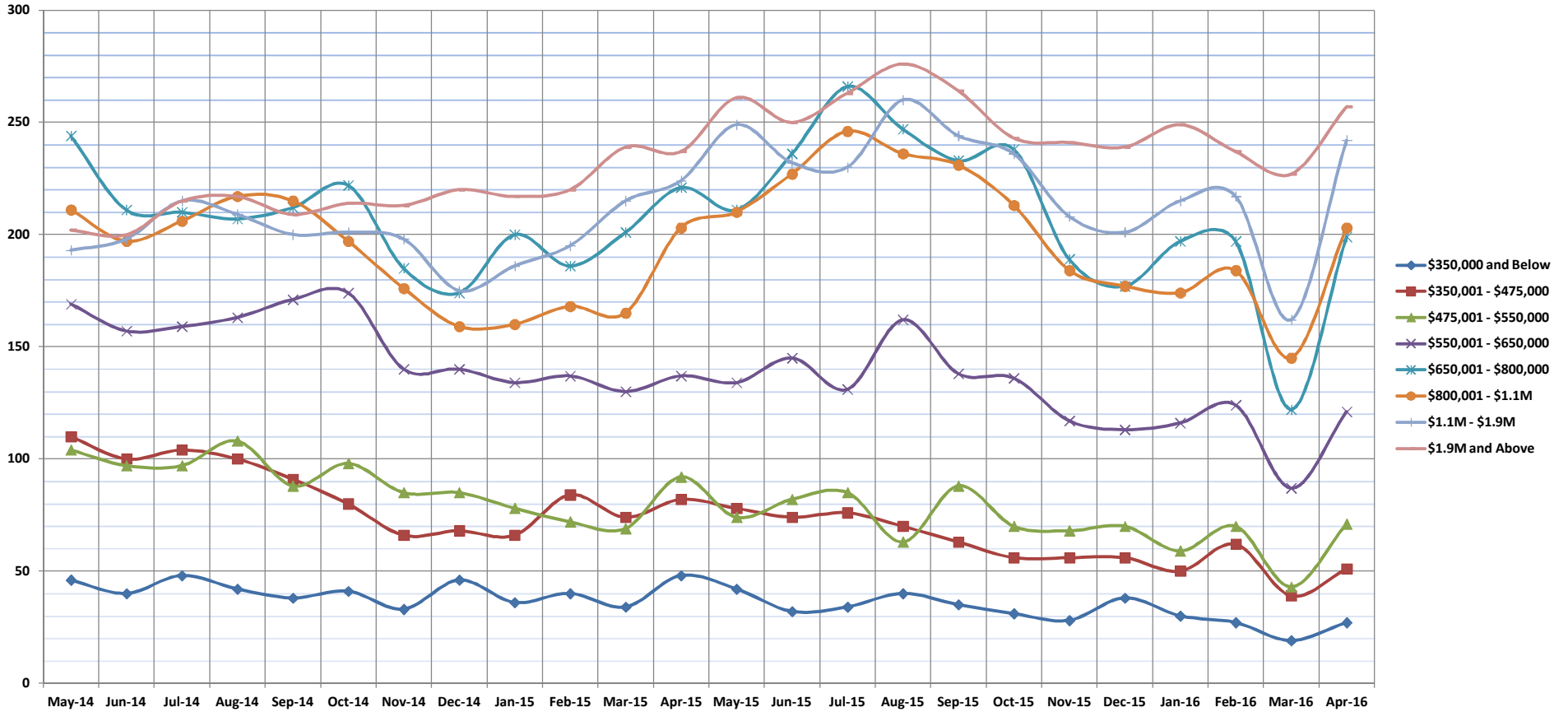


# Inventory of Homes for Sale

Apr-16

Single Family Homes: Monthly, by Price Range

(The number of properties available for sale in active status at the end of a given month.)



	May-14	Jun-14	Jul-14	Aug-14	Sep-14	Oct-14	Nov-14	Dec-14	Jan-15	Feb-15	Mar-15	Apr-15	May-15	Jun-15	Jul-15	Aug-15	Sep-15	Oct-15	Nov-15	Dec-15	Jan-16	Feb-16	Mar-16	Apr-16
\$350,000 and Below	46	40	48	42	38	41	33	46	36	40	34	48	42	32	34	40	35	31	28	38	30	27	19	27
\$350,001 - \$475,000	110	100	104	100	91	80	66	68	66	84	74	82	78	74	76	70	63	56	56	56	50	62	39	51
\$475,001 - \$550,000	104	97	97	108	88	98	85	85	78	72	69	92	74	82	85	63	88	70	68	70	59	70	43	71
\$550,001 - \$650,000	169	157	159	163	171	174	140	140	134	137	130	137	134	145	131	162	138	136	117	113	116	124	87	121
\$650,001 - \$800,000	244	211	210	207	212	222	185	174	200	186	201	221	211	236	266	247	233	238	189	177	197	197	122	199
\$800,001 - \$1.1M	211	197	206	217	215	197	176	159	160	168	165	203	210	227	246	236	231	213	184	177	174	184	145	203
\$1.1M - \$1.9M	193	198	215	209	200	201	198	175	186	195	215	224	249	232	230	260	244	236	208	201	215	217	162	242
\$1.9M and Above	202	200	215	217	209	214	213	220	217	220	239	237	261	250	263	276	264	243	241	239	249	237	227	257
All Single Family Homes	1279	1200	1254	1263	1224	1227	1096	1067	1077	1102	1127	1244	1259	1278	1331	1354	1296	1223	1091	1071	1090	1118	844	1171

SOURCE: Honolulu Board of REALTORS®, compiled from MLS data.

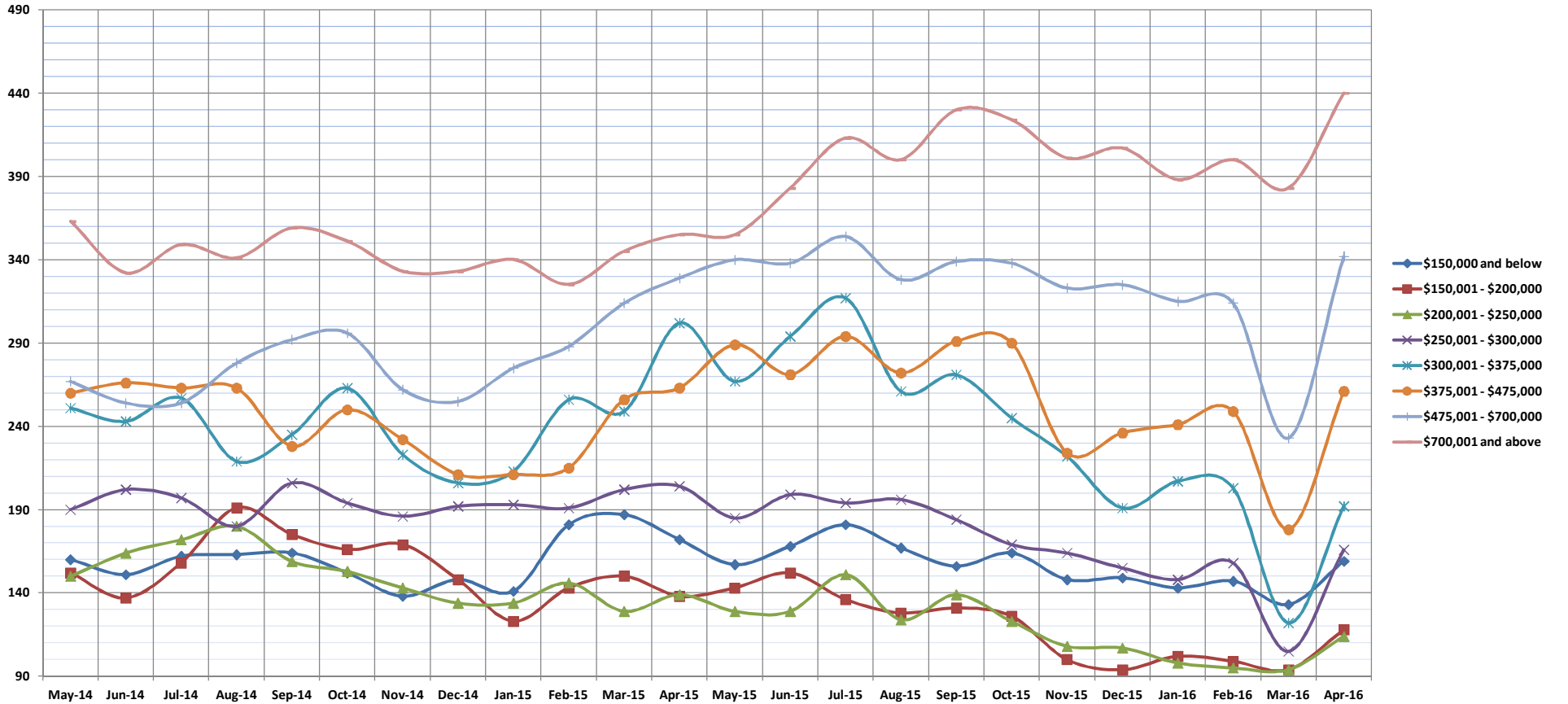


# Inventory of Homes for Sale

Apr-16

Condos: Monthly, by Price Range

(The number of properties available for sale in active status at the end of a given month.)



	May-14	Jun-14	Jul-14	Aug-14	Sep-14	Oct-14	Nov-14	Dec-14	Jan-15	Feb-15	Mar-15	Apr-15	May-15	Jun-15	Jul-15	Aug-15	Sep-15	Oct-15	Nov-15	Dec-15	Jan-16	Feb-16	Mar-16	Apr-16
\$150,000 and below	160	151	162	163	164	152	138	148	141	181	187	172	157	168	181	167	156	164	148	149	143	147	133	159
\$150,001 - \$200,000	152	137	158	191	175	166	169	148	123	143	150	138	143	152	136	128	131	126	100	94	102	99	94	118
\$200,001 - \$250,000	150	164	172	180	159	153	143	134	134	146	129	139	129	129	151	124	139	123	108	107	98	95	94	114
\$250,001 - \$300,000	190	202	197	180	206	194	186	192	193	191	202	204	185	199	194	196	184	169	164	155	148	158	105	166
\$300,001 - \$375,000	251	243	257	219	235	263	223	206	213	256	249	302	267	294	317	261	271	245	222	191	207	203	122	192
\$375,001 - \$475,000	260	266	263	263	228	250	232	211	211	215	256	263	289	271	294	272	291	290	224	236	241	249	178	261
\$475,001 - \$700,000	267	254	254	278	292	296	262	255	275	288	314	329	340	338	354	328	339	338	323	325	315	314	233	342
\$700,001 and above	363	332	349	341	359	351	333	333	340	325	345	355	355	383	413	400	430	424	401	407	388	400	383	440
All Condos	1793	1749	1812	1815	1818	1825	1686	1627	1630	1745	1832	1902	1865	1934	2040	1876	1941	1879	1690	1664	1642	1665	1342	1792

SOURCE: Honolulu Board of REALTORS®, compiled from MLS data.

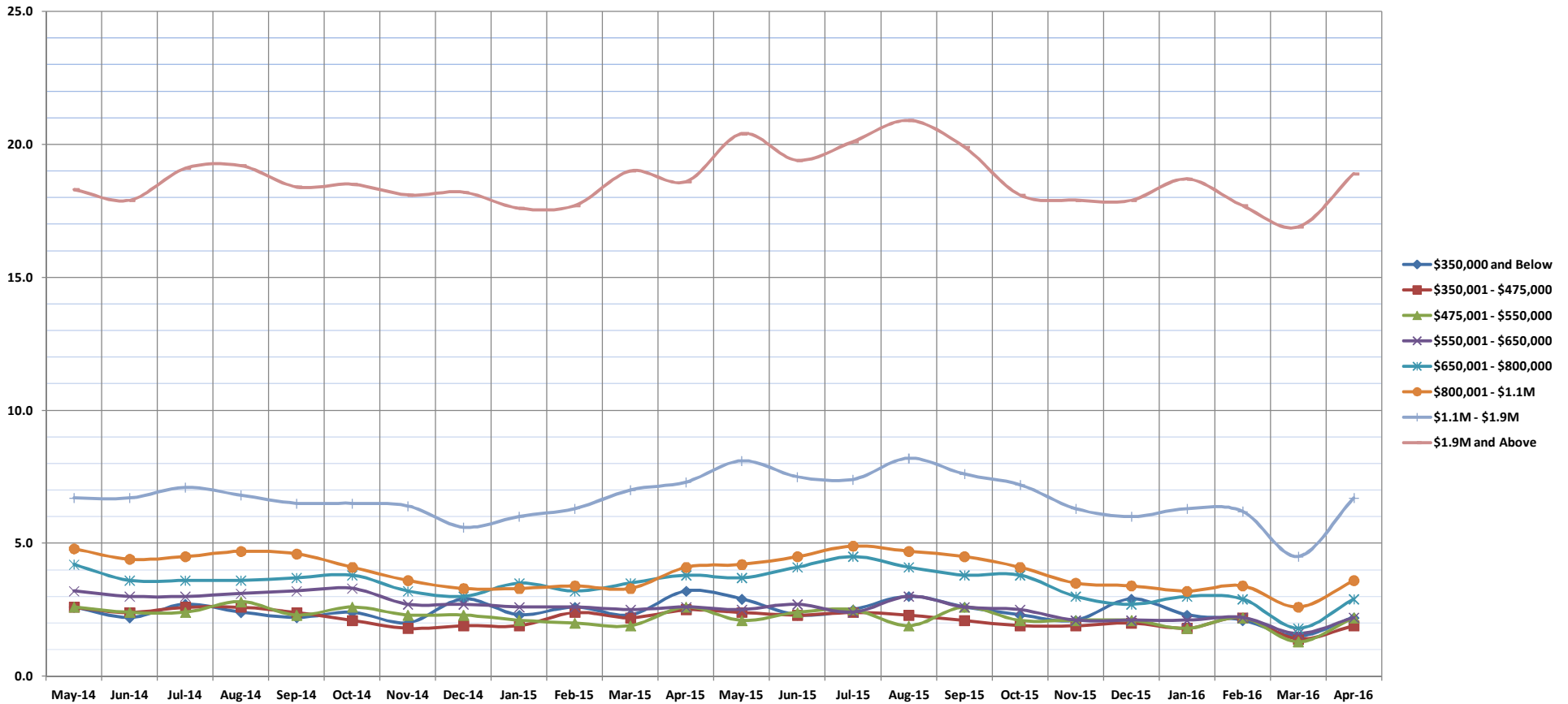


# Months Supply of Inventory

Apr-16

Single Family Homes: Monthly, by Price Range

(Compares the number of active listings available to the average monthly pending sales from the last 12 months.)



	May-14	Jun-14	Jul-14	Aug-14	Sep-14	Oct-14	Nov-14	Dec-14	Jan-15	Feb-15	Mar-15	Apr-15	May-15	Jun-15	Jul-15	Aug-15	Sep-15	Oct-15	Nov-15	Dec-15	Jan-16	Feb-16	Mar-16	Apr-16
\$350,000 and Below	2.6	2.2	2.7	2.4	2.2	2.4	2.0	2.9	2.3	2.6	2.3	3.2	2.9	2.3	2.5	3.0	2.6	2.3	2.1	2.9	2.3	2.1	1.5	2.2
\$350,001 - \$475,000	2.6	2.4	2.6	2.6	2.4	2.1	1.8	1.9	1.9	2.4	2.2	2.5	2.4	2.3	2.4	2.3	2.1	1.9	1.9	2.0	1.8	2.2	1.4	1.9
\$475,001 - \$550,000	2.6	2.4	2.4	2.8	2.3	2.6	2.3	2.1	2.0	1.9	2.6	2.1	2.4	2.5	1.9	2.6	2.1	2.1	2.1	2.1	1.8	2.2	1.3	2.2
\$550,001 - \$650,000	3.2	3.0	3.0	3.1	3.2	3.3	2.7	2.7	2.6	2.6	2.5	2.6	2.5	2.7	2.4	3.0	2.6	2.5	2.1	2.1	2.1	2.2	1.6	2.2
\$650,001 - \$800,000	4.2	3.6	3.6	3.6	3.7	3.8	3.2	3.0	3.5	3.2	3.5	3.8	3.7	4.1	4.5	4.1	3.8	3.8	3.0	2.7	3.0	2.9	1.8	2.9
\$800,001 - \$1.1M	4.8	4.4	4.5	4.7	4.6	4.1	3.6	3.3	3.3	3.4	3.3	4.1	4.2	4.5	4.9	4.7	4.5	4.1	3.5	3.4	3.2	3.4	2.6	3.6
\$1.1M - \$1.9M	6.7	6.7	7.1	6.8	6.5	6.5	6.4	5.6	6.0	6.3	7.0	7.3	8.1	7.5	7.4	8.2	7.6	7.2	6.3	6.0	6.3	6.2	4.5	6.7
\$1.9M and Above	18.3	17.9	19.1	19.2	18.4	18.5	18.1	18.2	17.6	17.7	19.0	18.6	20.4	19.4	20.1	20.9	19.9	18.1	17.9	17.9	18.7	17.7	16.9	18.9
All Single Family Homes	4.3	4.0	4.2	4.3	4.2	4.2	3.8	3.7	3.7	3.8	3.9	4.3	4.4	4.5	4.7	4.7	4.5	4.2	3.7	3.7	3.7	3.7	2.8	3.9

SOURCE: Honolulu Board of REALTORS®, compiled from MLS data.

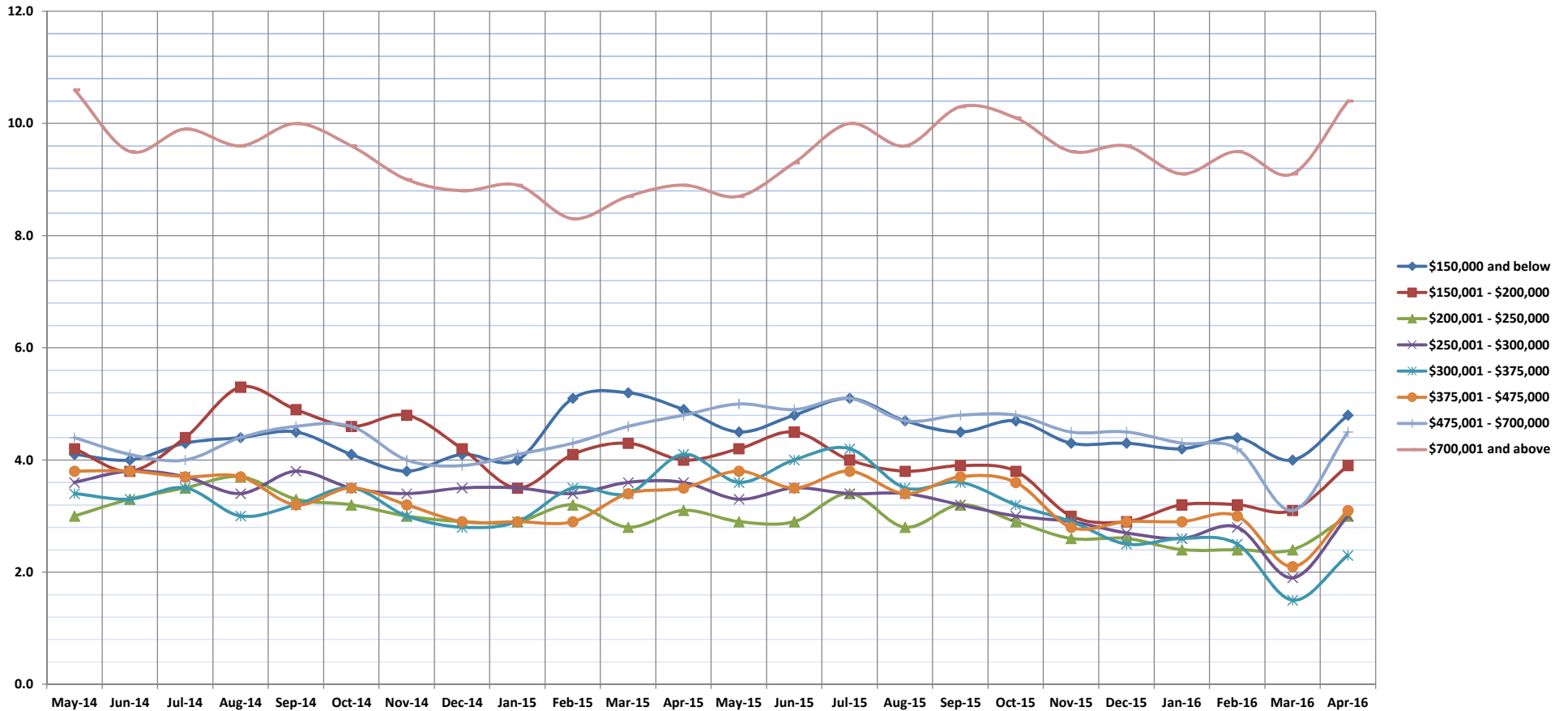


# Months Supply of Inventory

Apr-16

Condos: Monthly, by Price Range

(Compares the number of active listings available to the average monthly pending sales from the last 12 months.)



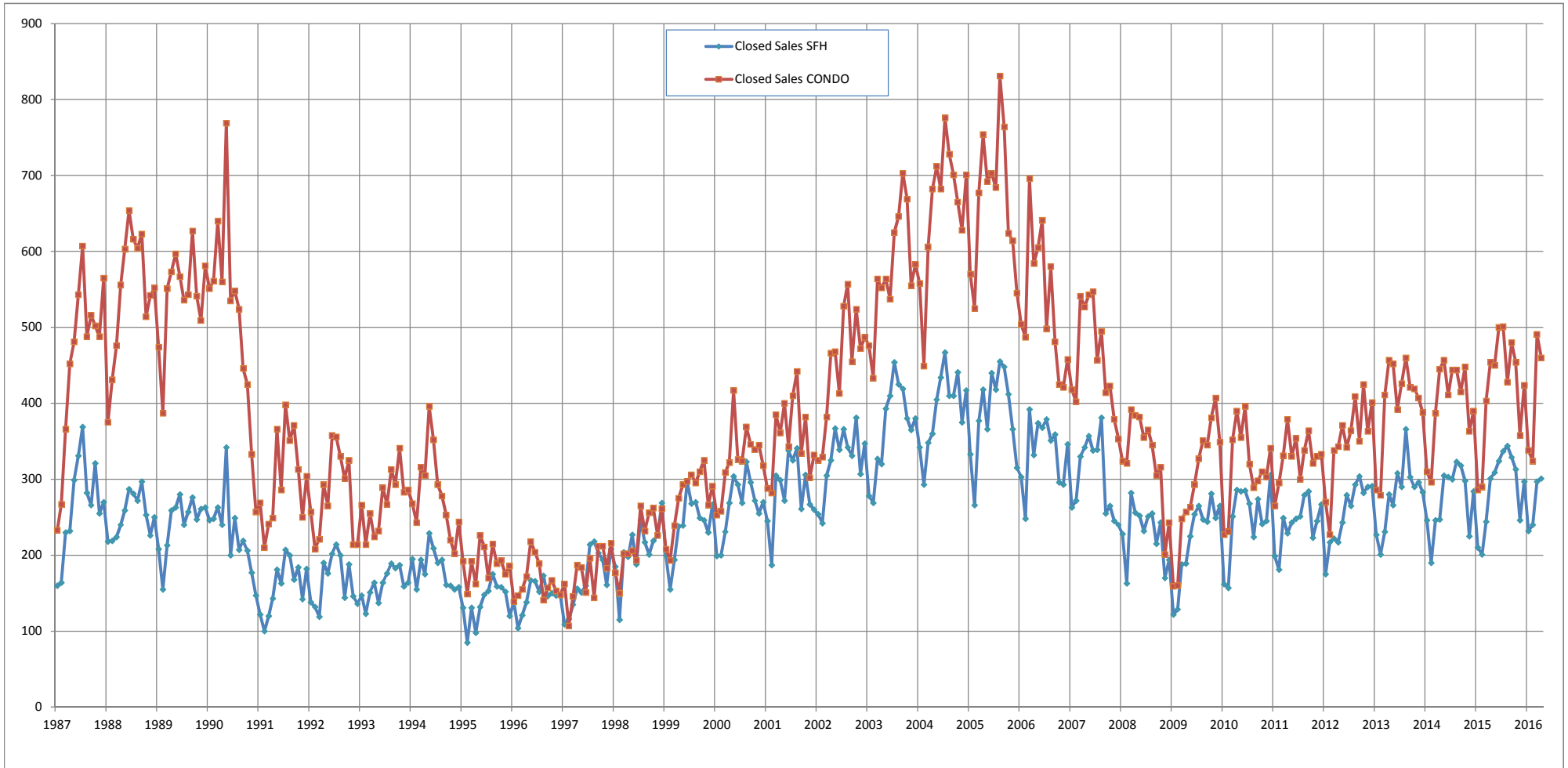
	May-14	Jun-14	Jul-14	Aug-14	Sep-14	Oct-14	Nov-14	Dec-14	Jan-15	Feb-15	Mar-15	Apr-15	May-15	Jun-15	Jul-15	Aug-15	Sep-15	Oct-15	Nov-15	Dec-15	Jan-16	Feb-16	Mar-16	Apr-16
\$150,000 and below	4.1	4.0	4.3	4.4	4.5	4.1	3.8	4.1	4.0	5.1	5.2	4.9	4.5	4.8	5.1	4.7	4.5	4.7	4.3	4.3	4.2	4.4	4.0	4.8
\$150,001 - \$200,000	4.2	3.8	4.4	5.3	4.9	4.6	4.8	4.2	3.5	4.1	4.3	4.0	4.2	4.5	4.0	3.8	3.9	3.8	3.0	2.9	3.2	3.2	3.1	3.9
\$200,001 - \$250,000	3.0	3.3	3.5	3.7	3.3	3.2	3.0	2.9	2.9	3.2	2.8	3.1	2.9	2.9	3.4	2.8	3.2	2.9	2.6	2.6	2.4	2.4	2.4	3.0
\$250,001 - \$300,000	3.6	3.8	3.7	3.4	3.8	3.5	3.4	3.5	3.5	3.4	3.6	3.6	3.3	3.5	3.4	3.4	3.2	3.0	2.9	2.7	2.6	2.8	1.9	3.0
\$300,001 - \$375,000	3.4	3.3	3.5	3.0	3.2	3.5	3.0	2.8	2.9	3.5	3.4	4.1	3.6	4.0	4.2	3.5	3.6	3.2	2.9	2.5	2.6	2.5	1.5	2.3
\$375,001 - \$475,000	3.8	3.8	3.7	3.7	3.2	3.5	3.2	2.9	2.9	2.9	3.4	3.5	3.8	3.5	3.8	3.4	3.7	3.6	2.8	2.9	2.9	3.0	2.1	3.1
\$475,001 - \$700,000	4.4	4.1	4.0	4.4	4.6	4.6	4.0	3.9	4.1	4.3	4.6	4.8	5.0	4.9	5.1	4.7	4.8	4.8	4.5	4.5	4.3	4.2	3.1	4.5
\$700,001 and above	10.6	9.5	9.9	9.6	10.0	9.6	9.0	8.8	8.9	8.3	8.7	8.9	8.7	9.3	10.0	9.6	10.3	10.1	9.5	9.6	9.1	9.5	9.1	10.4
All Condos	4.3	4.2	4.3	4.3	4.3	4.3	4.0	3.8	3.8	4.0	4.2	4.4	4.3	4.4	4.6	4.2	4.4	4.2	3.8	3.7	3.7	3.8	3.0	4.0

SOURCE: Honolulu Board of REALTORS®, compiled from MLS data.

# Closed Sales

## Single Family Homes and Condos

OAHU, HAWAII: Jan 1987 to the Present



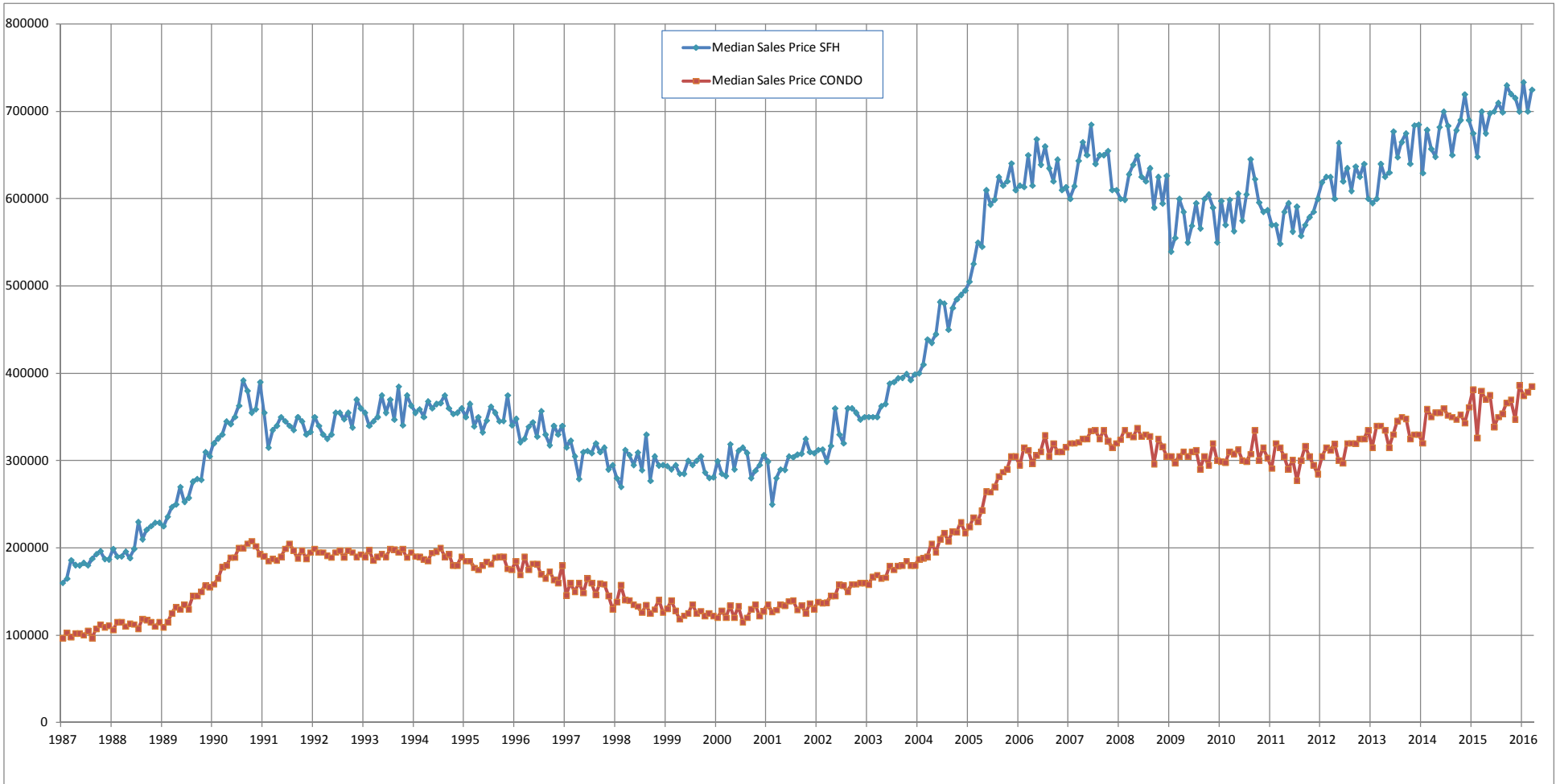
SOURCE: Honolulu Board of REALTORS® , compiled from MLS data.



# Median Sales Price

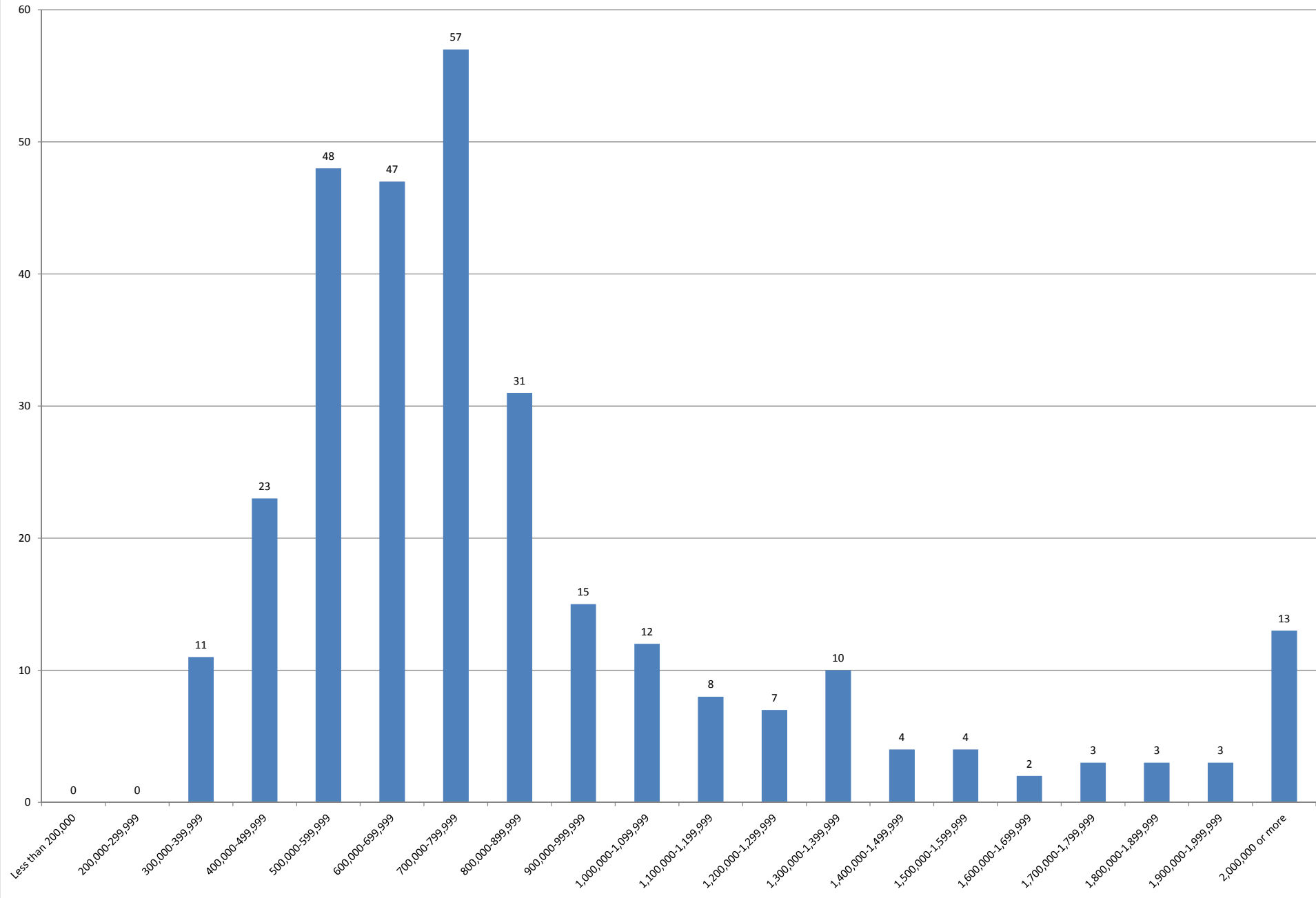
## Single Family Homes and Condos

OAHU, HAWAII: Jan 1987 to the Present



SOURCE: Honolulu Board of REALTORS®, compiled from MLS data.

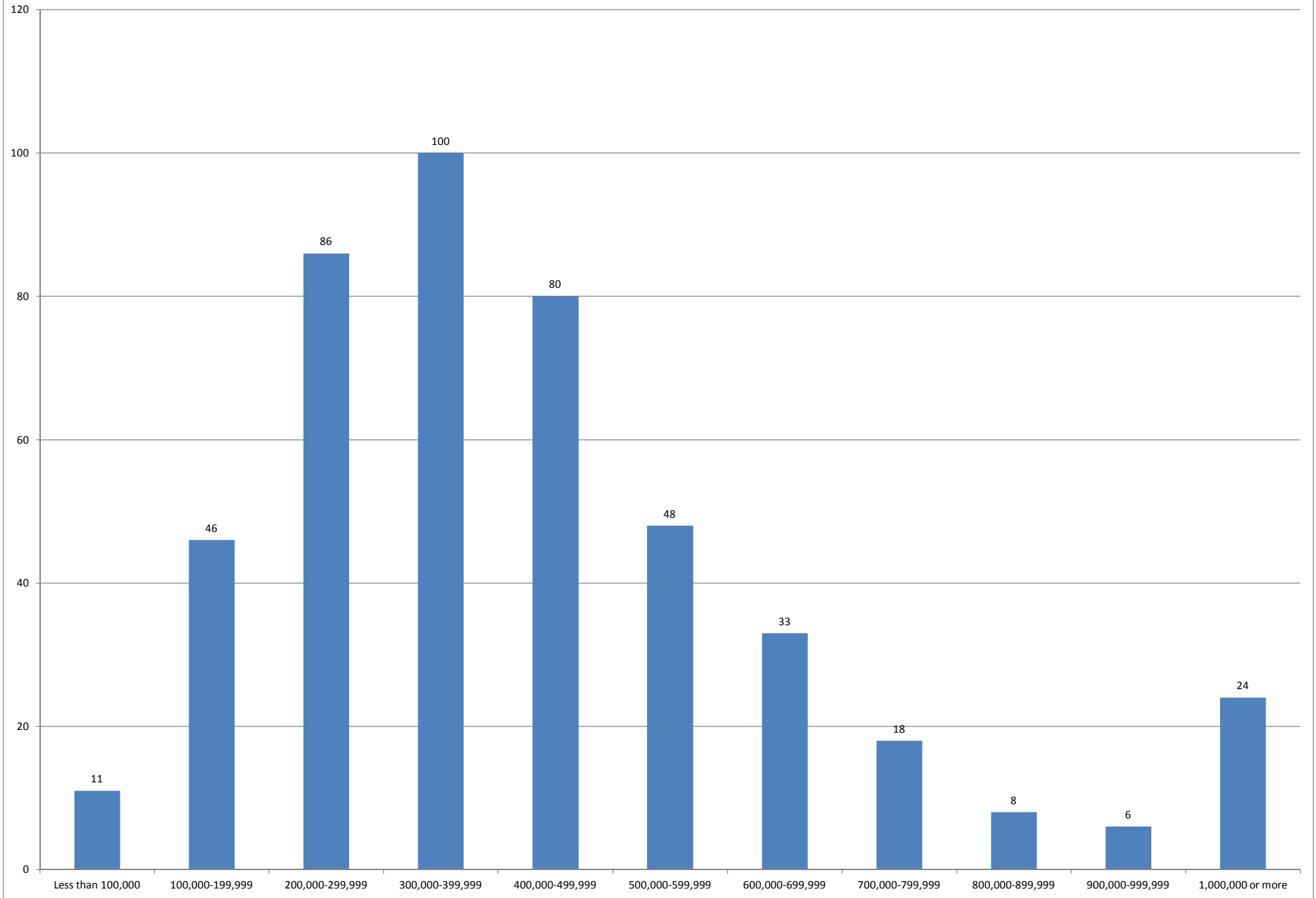
### April 2016 Single Family Homes Sold



SOURCE: Honolulu Board of REALTORS®, compiled from MLS data.



### April 2016 Condos Sold



SOURCE: Honolulu Board of REALTORS®, compiled from MLS data.

