

Monthly Housing Statistics

MAY 2015



SINGLE FAMILY HOMES

Median Sales Price	
\$698,000	+2.3%
Closed Sales	
309	+1.3%
Average Sales Price	
\$950,194	+10.1%

CONDOS

Median Sales Price	
\$375,000	+5.6%
Closed Sales	
450	-1.5%
Average Sales Price	
\$414,944	-3.8%

INDEX:

Monthly Indicators	2
Closed Sales	3
Median Sales Price	4
Median Days on Market	5
New Listings	6
Pending Sales	7
Months of Inventory	8
Active Listings	9
Average Sales Price	10
% of Original Listing Price Received	11
Active Continue to Show	12
Housing Supply Overview	13
Pending Sales (by price range)	14-15
Median Days on Market (by price range)	16-17
% of list price received (by price range)	18-19
Inventory of Homes (by price range)	20-21
Months Supply of Inventory (price range)	22-23
Historical Graphs	24-25

Monthly Indicators

May 2015

	Single Family Homes					
	May-15	May-14	%	YTD-15	YTD-14	%
Closed Sales	309	305	1.3%	1,265	1,241	1.9%
Median Sales Price	\$698,000	\$682,000	2.3%	\$683,000	\$655,000	4.3%
Median Days on Market	17	20	-15.0%	22	21	4.8%
New Listings	417	465	-10.3%	2,032	2,083	-2.4%
Pending Sales	426	513	-17.0%	1,919	2,113	-9.2%
Months of Inventory	3.1	3.1	0.0%	--	--	--
Active Listings	1,259	1,279	-1.6%	--	--	--
Average Sales Price	\$950,194	\$863,225	10.1%	\$875,146	\$828,618	5.6%
% of Original Listing Price Received	97.1%	99.1%	-2.0%	97.6%	97.9%	-0.3%

	Condos					
	May-15	May-14	%	YTD-15	YTD-14	%
Closed Sales	450	457	-1.5%	1,883	1,920	-1.9%
Median Sales Price	\$375,000	\$355,000	5.6%	\$365,000	\$350,000	4.3%
Median Days on Market	23	21	9.5%	23	23	0.0%
New Listings	610	574	6.3%	3,151	2,827	11.5%
Pending Sales	625	625	0.0%	2,667	2,667	0.0%
Months of Inventory	3.4	3.4	0.0%	--	--	--
Active Listings	1,865	1,793	4.0%	--	--	--
Average Sales Price	\$414,944	\$431,363	-3.8%	\$425,460	\$423,526	0.5%
% of Original Listing Price Received	97.4%	98.6%	-1.2%	97.3%	97.5%	-0.2%

SOURCE: Honolulu Board of REALTORS®, compiled from MLS data.

Page 2

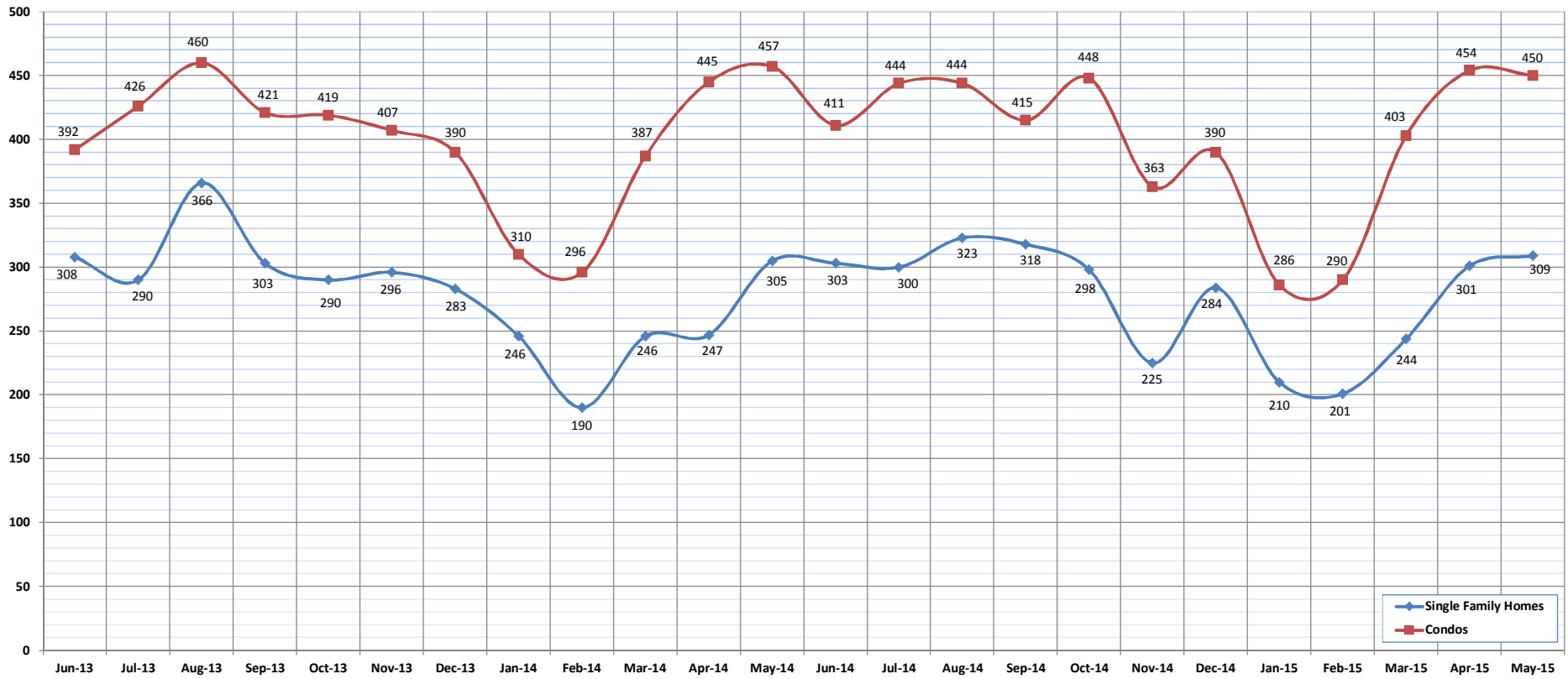


Closed Sales

May-15

OAHU, HAWAII

(A count of all properties that have closed in a given month.)



	Jun-13	Jul-13	Aug-13	Sep-13	Oct-13	Nov-13	Dec-13	Jan-14	Feb-14	Mar-14	Apr-14	May-14	Jun-14	Jul-14	Aug-14	Sep-14	Oct-14	Nov-14	Dec-14	Jan-15	Feb-15	Mar-15	Apr-15	May-15
Closed Sales: Single Family Homes	308	290	366	303	290	296	283	246	190	246	247	305	303	300	323	318	298	225	284	210	201	244	301	309
Closed Sales: Condos	392	426	460	421	419	407	390	310	296	387	445	457	411	444	444	415	448	363	390	286	290	403	454	450
Closed Sales: Total	700	716	826	724	709	703	673	556	486	633	692	762	714	744	767	733	746	588	674	496	491	647	755	759

SOURCE: Honolulu Board of REALTORS®, compiled from MLS data.

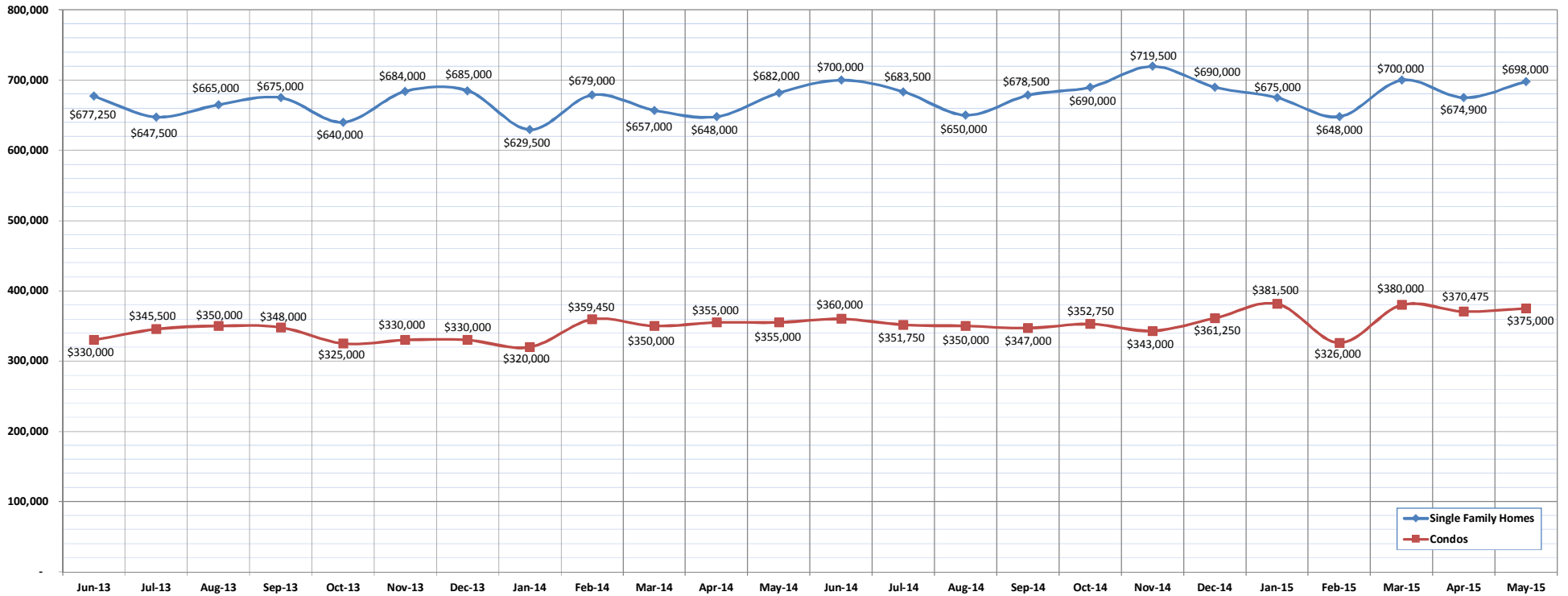


Median Sales Price

May-15

OAHU, HAWAII

(The median sales price for all closed properties in a given month.)



	Jun-13	Jul-13	Aug-13	Sep-13	Oct-13	Nov-13	Dec-13	Jan-14	Feb-14	Mar-14	Apr-14	May-14	Jun-14	Jul-14	Aug-14	Sep-14	Oct-14	Nov-14	Dec-14	Jan-15	Feb-15	Mar-15	Apr-15	May-15
Median Sales Price : SFH	677,250	647,500	665,000	675,000	640,000	684,000	685,000	629,500	679,000	657,000	648,000	682,000	700,000	683,500	650,000	678,500	690,000	719,500	690,000	675,000	648,000	700,000	674,900	698,000
Median Sales Price: Condos	330,000	345,500	350,000	348,000	325,000	330,000	330,000	320,000	359,450	350,000	355,000	355,000	360,000	351,750	350,000	347,000	352,750	343,000	361,250	381,500	326,000	380,000	370,475	375,000

SOURCE: Honolulu Board of REALTORS®, compiled from MLS data.

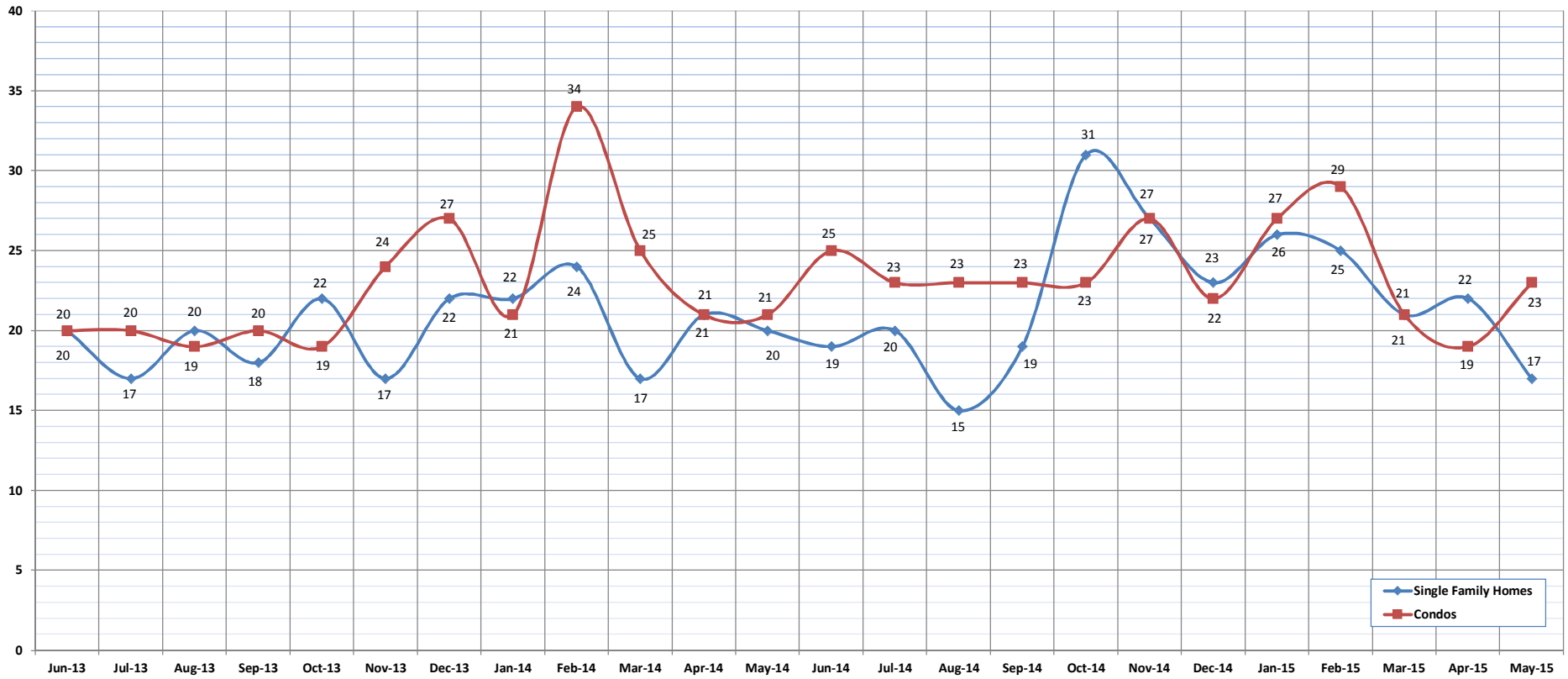


Median Days on Market

May-15

OAHU, HAWAII

(The median number of days between when a property is first listed and when an offer is accepted.)



	Jun-13	Jul-13	Aug-13	Sep-13	Oct-13	Nov-13	Dec-13	Jan-14	Feb-14	Mar-14	Apr-14	May-14	Jun-14	Jul-14	Aug-14	Sep-14	Oct-14	Nov-14	Dec-14	Jan-15	Feb-15	Mar-15	Apr-15	May-15
Median Days on Market: SFH	20	17	20	18	22	17	22	22	24	17	21	20	19	20	15	19	31	27	23	26	25	21	22	17
Median Days on Market: Condos	20	20	19	20	19	24	27	21	34	25	21	21	25	23	23	23	23	27	22	27	29	21	19	23

SOURCE: Honolulu Board of REALTORS®, compiled from MLS data.

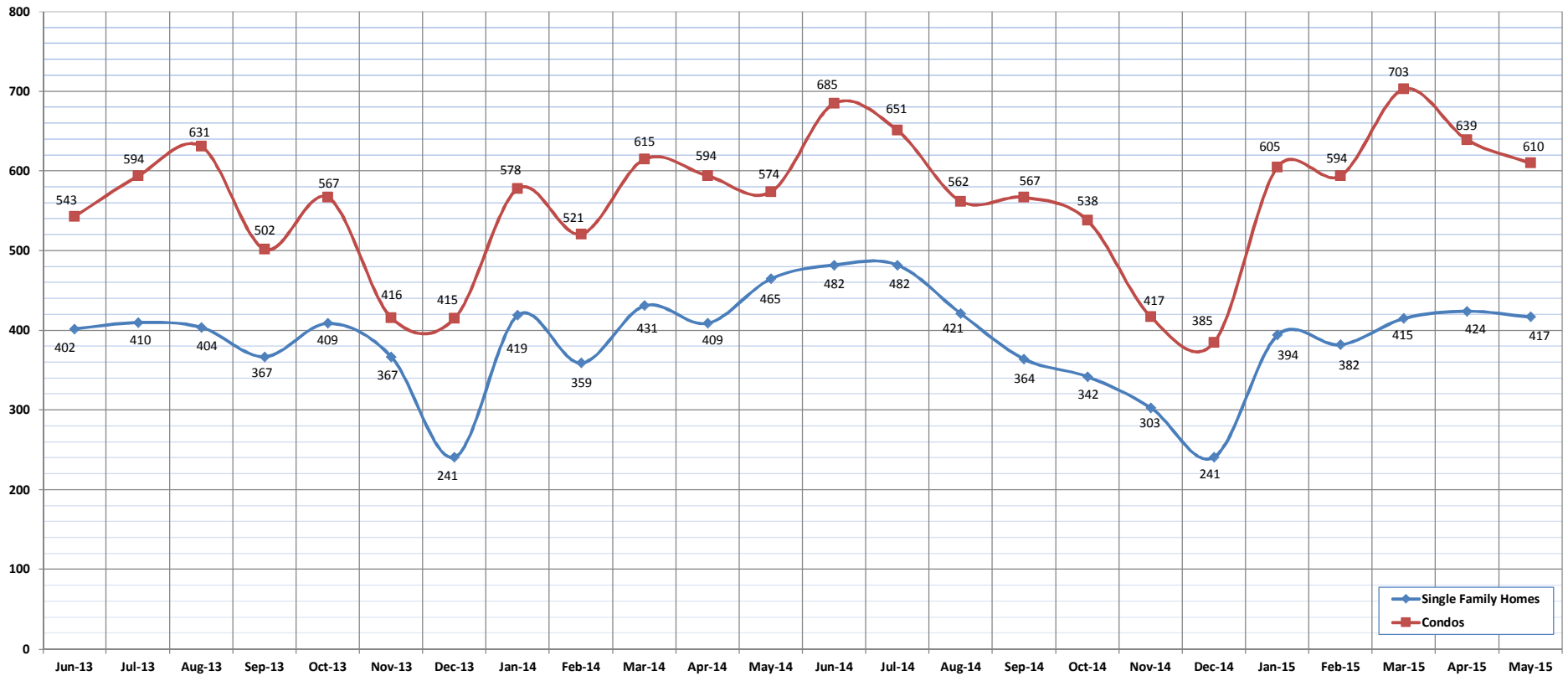


New Listings

May-15

OAHU, HAWAII

(A count of the properties that have been newly listed on the market in a given month.)



	Jun-13	Jul-13	Aug-13	Sep-13	Oct-13	Nov-13	Dec-13	Jan-14	Feb-14	Mar-14	Apr-14	May-14	Jun-14	Jul-14	Aug-14	Sep-14	Oct-14	Nov-14	Dec-14	Jan-15	Feb-15	Mar-15	Apr-15	May-15
New Listings: Single Family Homes	402	410	404	367	409	367	241	419	359	431	409	465	482	482	421	364	342	303	241	394	382	415	424	417
New Listings: Condos	543	594	631	502	567	416	415	578	521	615	594	574	685	651	562	567	538	417	385	605	594	703	639	610
New Listings: Total	945	1004	1035	869	976	783	656	997	880	1046	1003	1039	1167	1133	983	931	880	720	626	999	976	1118	1063	1027

SOURCE: Honolulu Board of REALTORS®, compiled from MLS data.

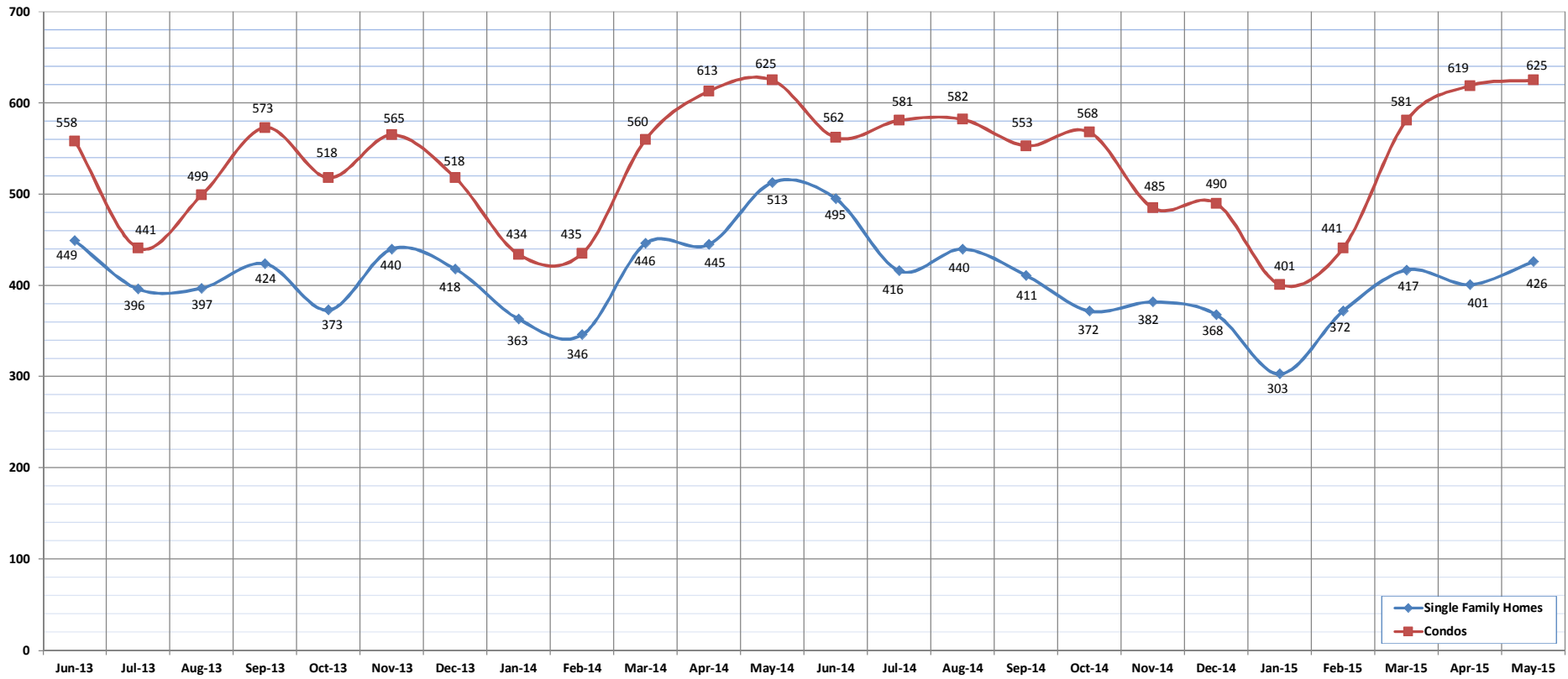


Pending Sales

May-15

OAHU, HAWAII

(A count of the properties that have offers accepted on them in a given month.)



	Jun-13	Jul-13	Aug-13	Sep-13	Oct-13	Nov-13	Dec-13	Jan-14	Feb-14	Mar-14	Apr-14	May-14	Jun-14	Jul-14	Aug-14	Sep-14	Oct-14	Nov-14	Dec-14	Jan-15	Feb-15	Mar-15	Apr-15	May-15	
Pending Sales: Single Family Homes	449	396	397	424	373	440	418	363	346	446	445	513	495	416	440	411	372	382	368	303	372	417	417	401	426
Pending Sales: Condos	558	441	499	573	518	565	518	434	435	560	613	625	562	581	582	553	568	485	490	401	441	581	619	619	625
Pending Sales: Total	1007	837	896	997	891	1005	936	797	781	1006	1058	1138	1057	997	1022	964	940	867	858	704	813	998	1020	1051	

SOURCE: Honolulu Board of REALTORS®, compiled from MLS data.

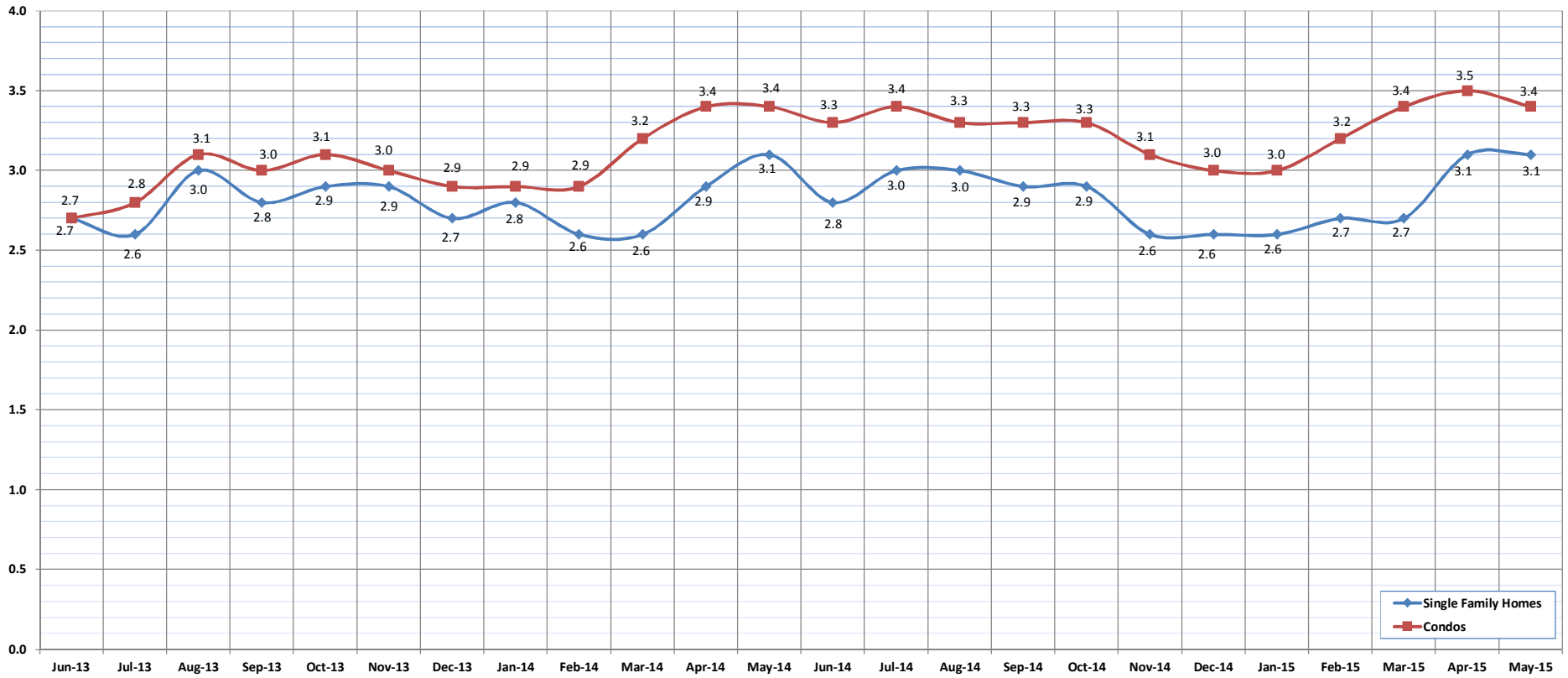


Months of Inventory

May-15

OAHU, HAWAII

(Compares the number of active listings available to the average monthly pending sales.)



	Jun-13	Jul-13	Aug-13	Sep-13	Oct-13	Nov-13	Dec-13	Jan-14	Feb-14	Mar-14	Apr-14	May-14	Jun-14	Jul-14	Aug-14	Sep-14	Oct-14	Nov-14	Dec-14	Jan-15	Feb-15	Mar-15	Apr-15	May-15	
Month of Inventory : SFH	2.7	2.6	3.0	2.8	2.9	2.9	2.7	2.8	2.6	2.6	2.9	3.1	2.8	3.0	3.0	2.9	2.9	2.6	2.6	2.6	2.7	2.7	3.1	3.1	
Months of Inventory: Condos	2.7	2.8	3.1	3.0	3.1	3.0	2.9	2.9	2.9	3.2	3.4	3.4	3.3	3.4	3.3	3.3	3.3	3.3	3.1	3.0	3.0	3.2	3.4	3.5	3.4

SOURCE: Honolulu Board of REALTORS®, compiled from MLS data.

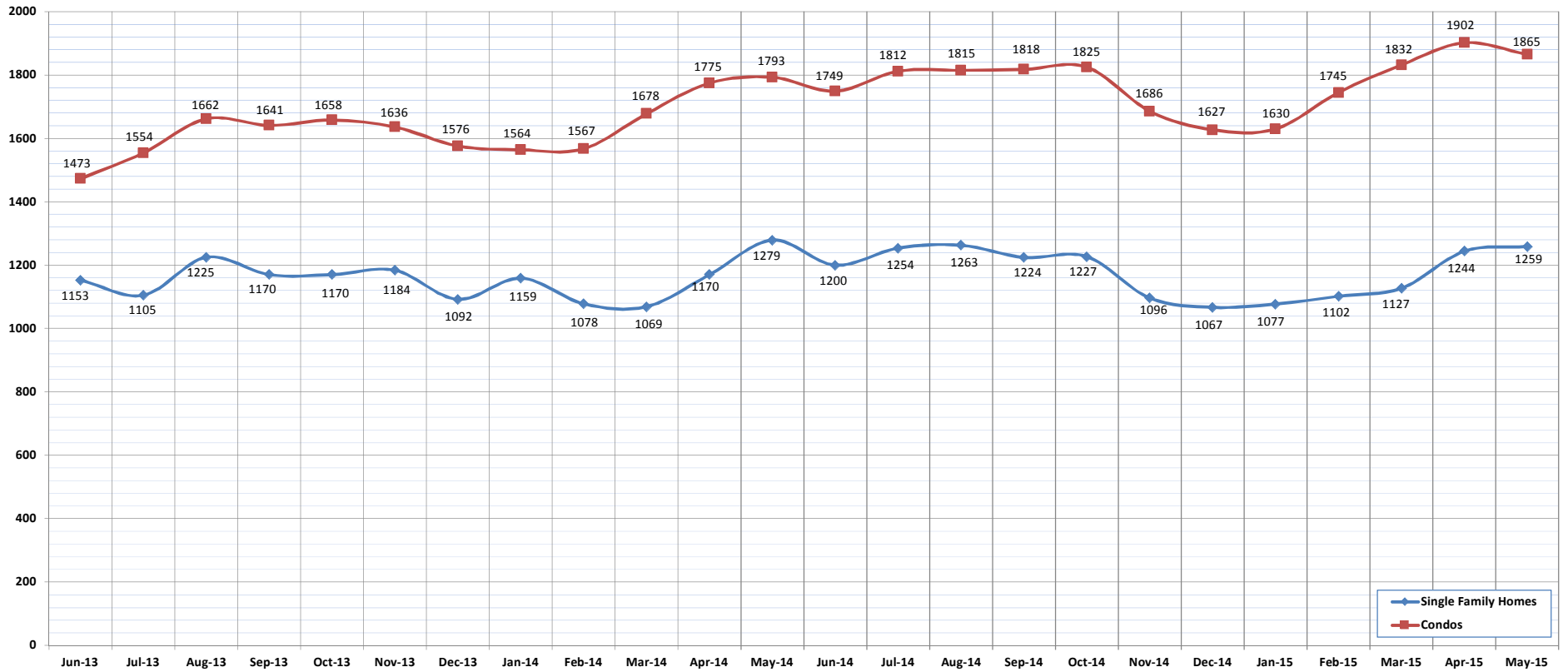


Active Listings

May-15

OAHU, HAWAII

(The number of properties available for purchase during a given month.)



	Jun-13	Jul-13	Aug-13	Sep-13	Oct-13	Nov-13	Dec-13	Jan-14	Feb-14	Mar-14	Apr-14	May-14	Jun-14	Jul-14	Aug-14	Sep-14	Oct-14	Nov-14	Dec-14	Jan-15	Feb-15	Mar-15	Apr-15	May-15
Active Listings: Single Family Homes	1153	1105	1225	1170	1170	1184	1092	1159	1078	1069	1170	1279	1200	1254	1263	1224	1227	1096	1067	1077	1102	1127	1244	1259
Active Listings: Condos	1473	1554	1662	1641	1658	1636	1576	1564	1567	1678	1775	1793	1749	1812	1815	1818	1825	1686	1627	1630	1745	1832	1902	1865
Active Listings: Total	2626	2659	2887	2811	2828	2820	2668	2723	2645	2747	2945	3072	2949	3066	3078	3042	3052	2782	2694	2707	2847	2959	3146	3124

SOURCE: Honolulu Board of REALTORS®, compiled from MLS data.

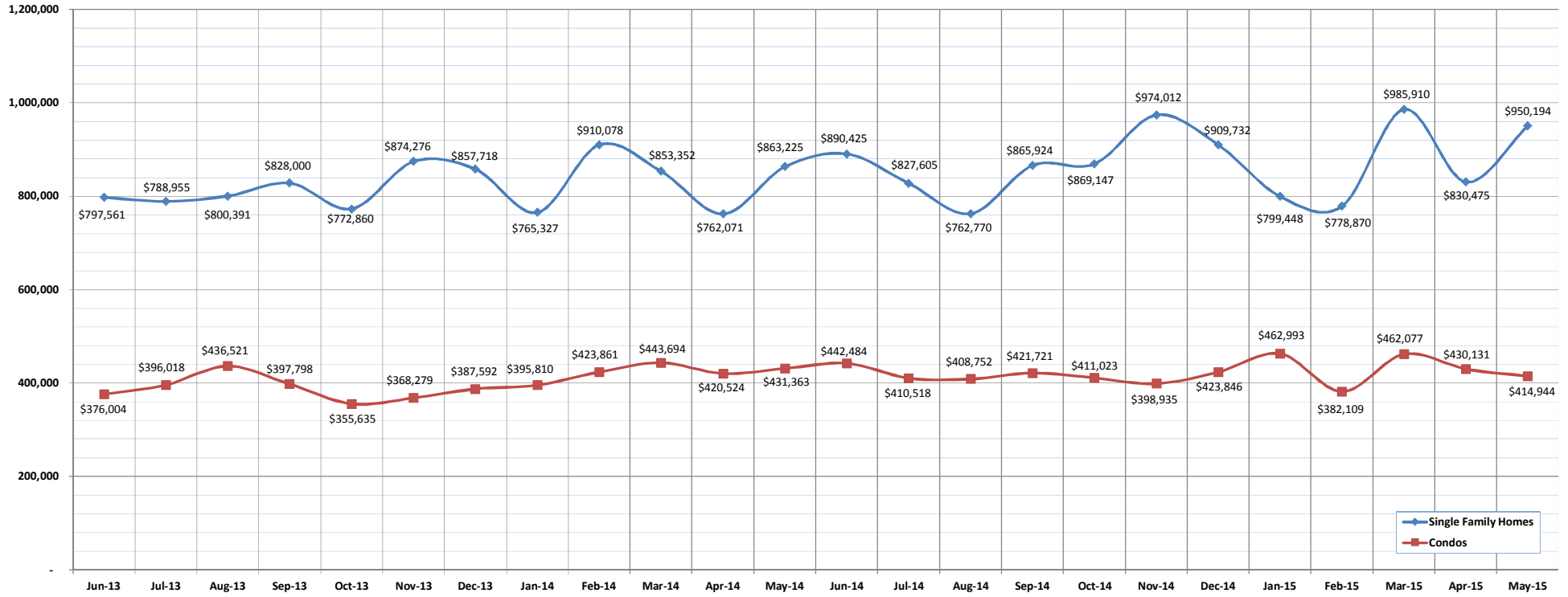


Average Sales Price

May-15

OAHU, HAWAII

(The average sales price for all closed sales in a given month.)



	Jun-13	Jul-13	Aug-13	Sep-13	Oct-13	Nov-13	Dec-13	Jan-14	Feb-14	Mar-14	Apr-14	May-14	Jun-14	Jul-14	Aug-14	Sep-14	Oct-14	Nov-14	Dec-14	Jan-15	Feb-15	Mar-15	Apr-15	May-15
Average Sales Price: SFH	797,561	788,955	800,391	828,000	772,860	874,276	857,718	765,327	910,078	853,352	762,071	863,225	890,425	827,605	762,770	865,924	869,147	974,012	909,732	799,448	778,870	985,910	830,475	950,194
Average Sales Price: Condos	376,004	396,018	436,521	397,798	355,635	368,279	387,592	395,810	423,861	443,694	420,524	431,363	442,484	410,518	408,752	421,721	411,023	398,935	423,846	462,993	382,109	462,077	430,131	414,944

SOURCE: Honolulu Board of REALTORS®, compiled from MLS data.

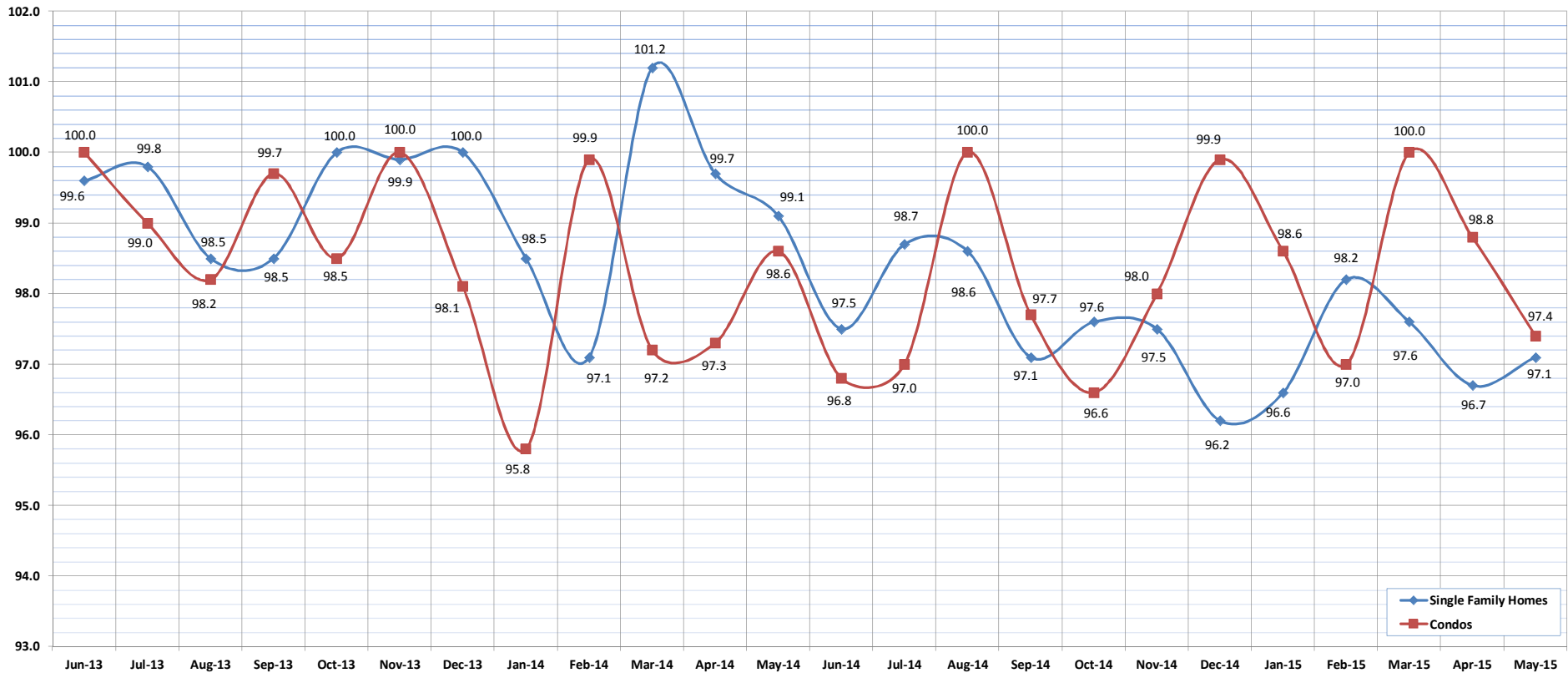


Percent of Original List Price Received

May-15

OAHU, HAWAII

(The percentage found when dividing a property's sales price by the original list price.)



	Jun-13	Jul-13	Aug-13	Sep-13	Oct-13	Nov-13	Dec-13	Jan-14	Feb-14	Mar-14	Apr-14	May-14	Jun-14	Jul-14	Aug-14	Sep-14	Oct-14	Nov-14	Dec-14	Jan-15	Feb-15	Mar-15	Apr-15	May-15
Percent of Original List Price: SFH	99.6	99.8	98.5	98.5	100.0	99.9	100.0	98.5	97.1	101.2	99.7	99.1	97.5	98.7	98.6	97.1	97.6	97.5	96.2	96.6	98.2	97.6	96.7	97.1
Percent of Original List Price: Condos	100.0	99.0	98.2	99.7	98.5	100.0	98.1	95.8	99.9	97.2	97.3	98.6	96.8	97.0	100.0	97.7	96.6	98.0	99.9	98.6	97.0	100.0	98.8	97.4

SOURCE: Honolulu Board of REALTORS®, compiled from MLS data.

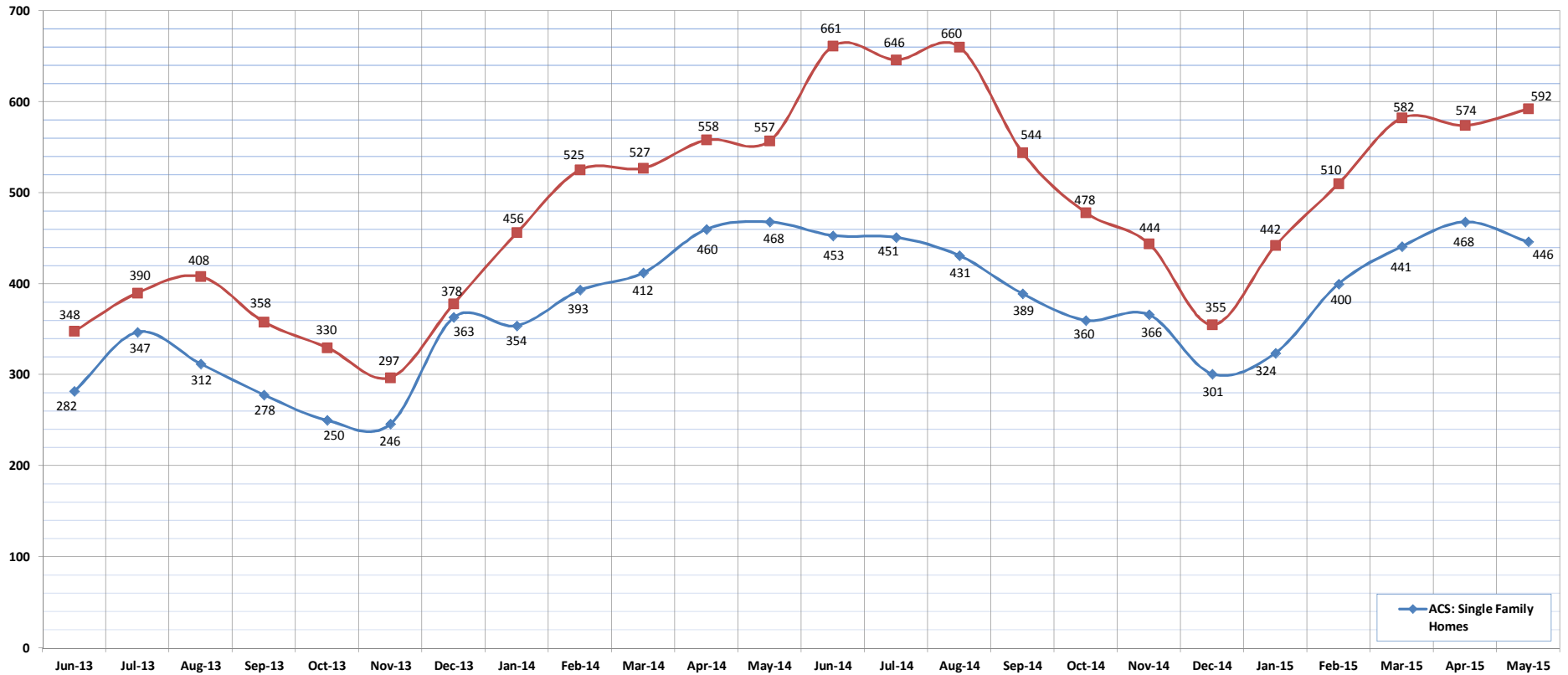


Active Continue to Show

May-15

OAHU, HAWAII

(A count of the properties that are in ACS during the current month.)



	Jun-13	Jul-13	Aug-13	Sep-13	Oct-13	Nov-13	Dec-13	Jan-14	Feb-14	Mar-14	Apr-14	May-14	Jun-14	Jul-14	Aug-14	Sep-14	Oct-14	Nov-14	Dec-14	Jan-15	Feb-15	Mar-15	Apr-15	May-15
ACS: Single Family Homes	282	347	312	278	250	246	363	354	393	412	460	468	453	451	431	389	360	366	301	324	400	441	468	446
ACS: Condos	348	390	408	358	330	297	378	456	525	527	558	557	661	646	660	544	478	444	355	442	510	582	574	592

*HBR began monthly tracking of ACS counts starting June 2013.

SOURCE: Honolulu Board of REALTORS®, compiled from MLS data.



Housing Supply Overview

May 2015

Single Family Homes	Pending Sales			Days on Market			Percentage of Original Price Received			Inventory of Homes for Sale			Months Supply of Inventory		
	May-15	May-14	%	May-15	May-14	%	May-15	May-14	%	May-15	May-14	%	May-15	May-14	%
\$350,000 and Below	159	204	-22.1%	27	29	-6.9%	99.4%	95.4%	4.2%	42	46	-8.7%	2.9	2.6	11.5%
\$350,001 - \$475,000	339	457	-25.8%	17	25	-32.0%	98.8%	98.0%	0.8%	78	110	-29.1%	2.4	2.6	-7.7%
\$475,001 - \$550,000	391	507	-22.9%	18	22	-18.2%	98.2%	98.8%	-0.6%	74	104	-28.8%	2.1	2.6	-19.2%
\$550,001 - \$650,000	663	646	2.6%	22	19	15.8%	98.1%	99.3%	-1.2%	134	169	-20.7%	2.5	3.2	-21.9%
\$650,001 - \$800,000	729	758	-3.8%	23	18	27.8%	97.7%	98.6%	-0.9%	211	244	-13.5%	3.7	4.2	-11.9%
\$800,001 - \$1.1M	617	585	5.5%	21	18	16.7%	98.0%	98.9%	-0.9%	210	211	-0.5%	4.2	4.8	-12.5%
\$1.1M - \$1.9M	397	393	1.0%	30	26	15.4%	95.6%	96.1%	-0.5%	249	193	29.0%	8.1	6.7	20.9%
\$1.9M and Above	157	148	6.1%	65	44	47.7%	92.8%	93.6%	-0.9%	261	202	29.2%	20.4	18.3	11.5%
All Single Family Homes	3452	3698	-6.7%	22	20	10.0%	97.5%	99.3%	-1.8%	1259	1279	-1.6%	4.4	4.3	2.3%

Condos	Pending Sales			Days on Market			Percentage of Original Price Received			Inventory of Homes for Sale			Months Supply of Inventory		
	May-15	May-14	%	May-15	May-14	%	May-15	May-14	%	May-15	May-14	%	May-15	May-14	%
\$150,000 and below	404	420	-3.8%	32	41	-22.0%	94.9%	90.9%	4.4%	157	160	-1.9%	4.5	4.1	9.8%
\$150,001 - \$200,000	392	437	-10.3%	38	25	52.0%	95.0%	95.5%	-0.5%	143	152	-5.9%	4.2	4.2	0.0%
\$200,001 - \$250,000	542	544	-0.4%	26	23	13.0%	96.6%	97.2%	-0.6%	129	150	-14.0%	2.9	3.0	-3.3%
\$250,001 - \$300,000	690	664	3.9%	24	23	4.3%	97.6%	98.2%	-0.6%	185	190	-2.6%	3.3	3.6	-8.3%
\$300,001 - \$375,000	907	887	2.3%	23	19	21.1%	97.4%	98.0%	-0.6%	267	251	6.4%	3.6	3.4	5.9%
\$375,001 - \$475,000	995	885	12.4%	19	18	5.6%	98.1%	98.4%	-0.3%	289	260	11.2%	3.8	3.8	0.0%
\$475,001 - \$700,000	845	801	5.5%	27	22	22.7%	97.9%	98.2%	-0.3%	340	267	27.3%	5.0	4.4	13.6%
\$700,001 and above	544	438	24.2%	45	35	28.6%	95.0%	96.6%	-1.7%	355	363	-2.2%	8.7	10.6	-17.9%
All Condos	5319	5076	4.8%	24	23	4.3%	98.1%	98.5%	-0.4%	1865	1793	4.0%	4.3	4.3	0.0%

SOURCE: Honolulu Board of REALTORS®, compiled from MLS data.

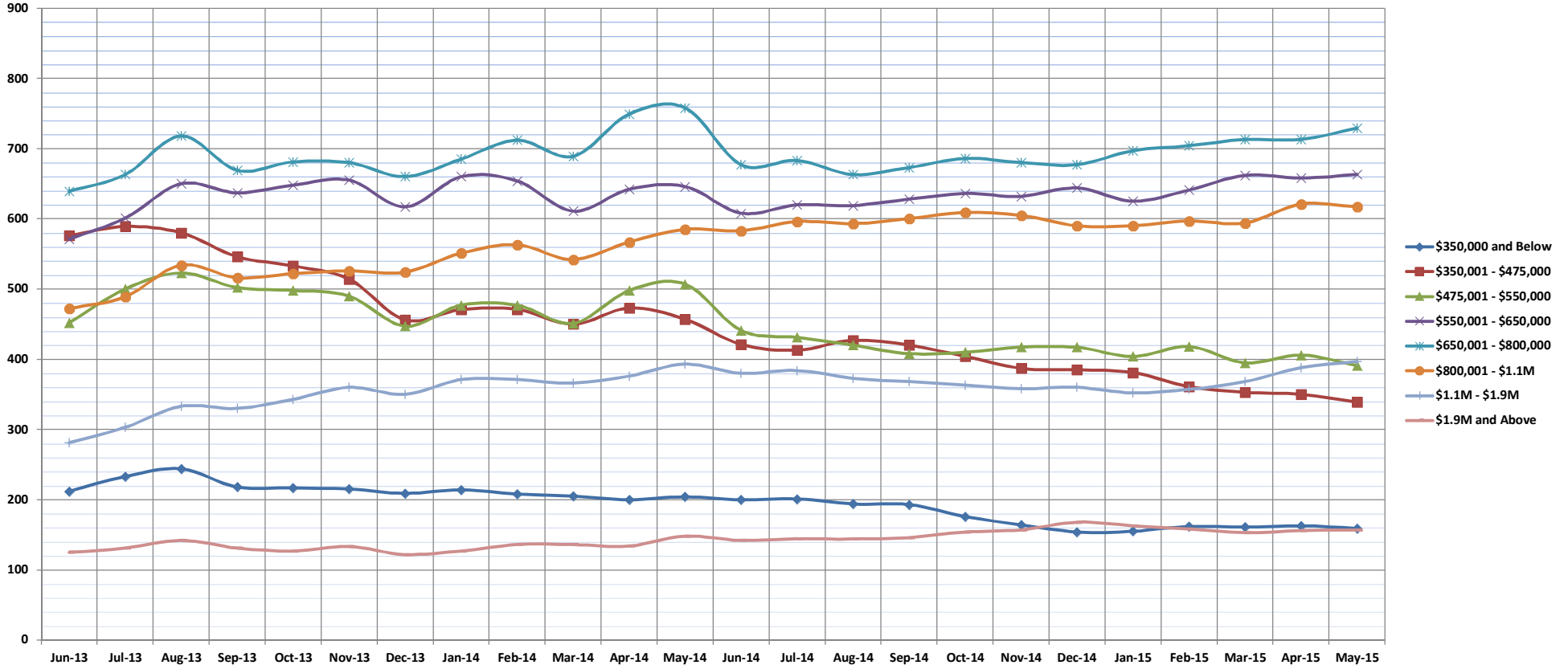


Pending Sales

May-15

Single Family Homes: Monthly, by Price Range

(A count of properties that have offers accepted on them in a given month. Based on a 12 month rolling total.)



	Jun-13	Jul-13	Aug-13	Sep-13	Oct-13	Nov-13	Dec-13	Jan-14	Feb-14	Mar-14	Apr-14	May-14	Jun-14	Jul-14	Aug-14	Sep-14	Oct-14	Nov-14	Dec-14	Jan-15	Feb-15	Mar-15	Apr-15	May-15
\$350,000 and Below	212	233	244	218	217	215	209	214	208	205	200	204	200	201	194	193	176	164	154	155	162	161	163	159
\$350,001 - \$475,000	576	589	580	546	533	514	456	471	471	450	473	457	421	413	427	420	404	387	385	381	361	353	350	339
\$475,001 - \$550,000	452	500	523	502	498	490	447	477	477	451	498	507	441	431	420	408	410	417	417	404	418	395	406	391
\$550,001 - \$650,000	571	601	650	637	648	655	617	660	654	611	642	646	608	620	619	628	636	632	644	625	641	662	658	663
\$650,001 - \$800,000	639	663	718	669	681	680	660	685	712	689	749	758	677	683	663	673	686	680	677	697	704	713	713	729
\$800,001 - \$1.1M	472	489	534	516	522	526	524	551	563	542	567	585	583	596	593	600	609	605	590	590	597	594	621	617
\$1.1M - \$1.9M	281	303	333	330	343	360	350	371	371	366	376	393	380	384	373	368	363	358	360	352	357	368	388	397
\$1.9M and Above	125	131	142	131	127	133	122	127	136	136	134	148	142	144	144	146	154	157	168	163	158	153	156	157
All Single Family Homes	3328	3509	3724	3549	3569	3573	3385	3556	3592	3450	3639	3698	3452	3472	3433	3436	3438	3400	3395	3367	3398	3399	3455	3452

SOURCE: Honolulu Board of REALTORS®, compiled from MLS data.

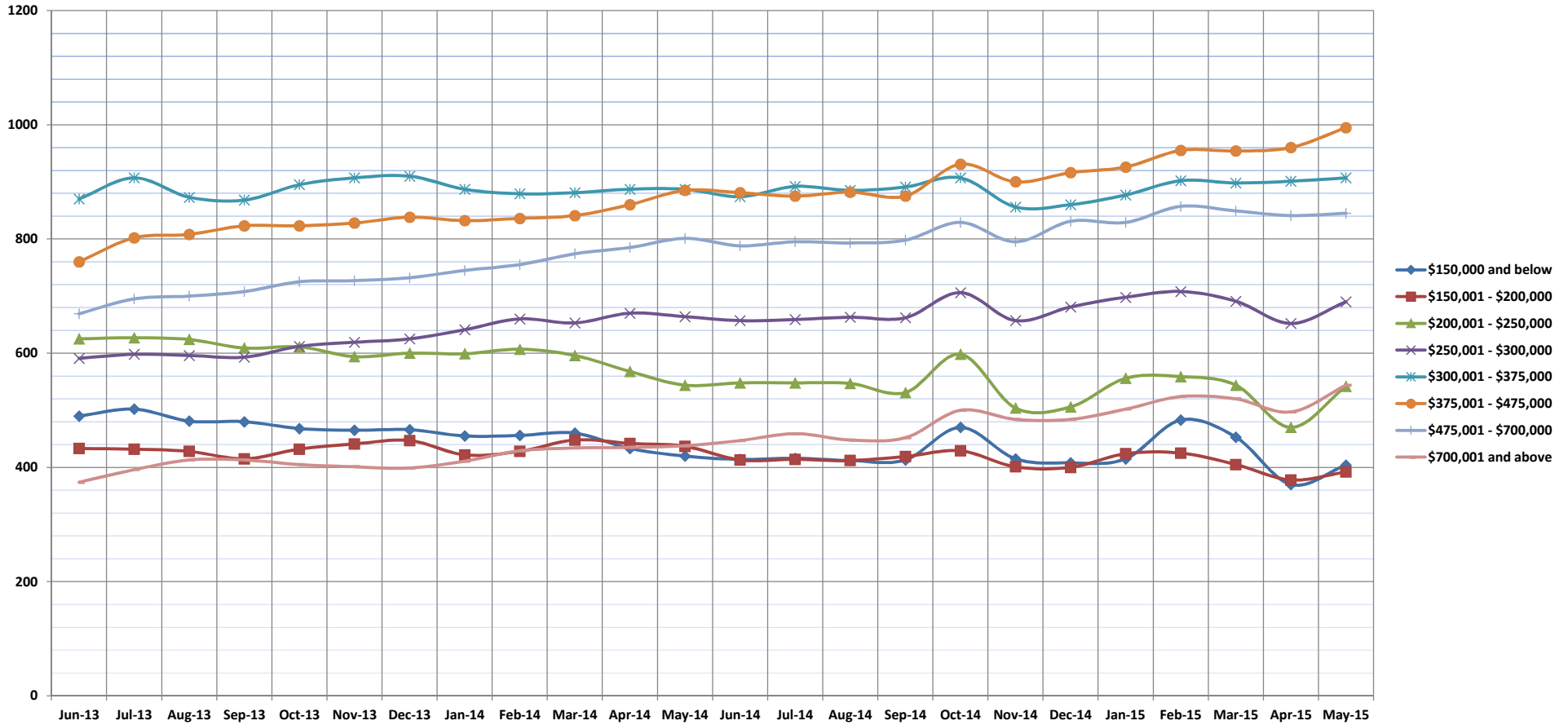


Pending Sales

May-15

Condos: Monthly, by Price Range

(A count of properties that have offers accepted on them in a given month. Based on a 12 month rolling total.)



	Jun-13	Jul-13	Aug-13	Sep-13	Oct-13	Nov-13	Dec-13	Jan-14	Feb-14	Mar-14	Apr-14	May-14	Jun-14	Jul-14	Aug-14	Sep-14	Oct-14	Nov-14	Dec-14	Jan-15	Feb-15	Mar-15	Apr-15	May-15
\$150,000 and below	490	502	481	480	468	465	466	455	456	460	433	420	414	416	412	413	470	415	408	415	483	453	370	404
\$150,001 - \$200,000	433	432	428	415	432	441	447	422	428	448	442	437	413	414	412	419	429	401	400	424	425	405	378	392
\$200,001 - \$250,000	625	627	624	609	611	594	600	599	607	596	568	544	548	548	547	531	598	504	506	556	559	544	470	542
\$250,001 - \$300,000	591	598	596	593	612	619	625	641	660	653	670	664	657	659	663	662	706	657	681	698	708	691	652	690
\$300,001 - \$375,000	870	907	873	868	895	907	910	887	879	881	887	887	874	892	885	891	907	856	860	877	902	898	901	907
\$375,001 - \$475,000	760	802	808	823	823	828	838	832	836	841	860	885	881	875	882	875	931	900	916	926	955	954	960	995
\$475,001 - \$700,000	669	695	700	708	725	727	732	745	755	774	785	801	788	795	793	798	829	795	831	829	857	849	841	845
\$700,001 and above	374	396	413	413	405	401	399	411	429	434	435	438	447	459	448	452	500	484	484	502	524	520	497	544
All Condos	4812	4959	4923	4909	4971	4982	5017	4992	5050	5087	5080	5076	5022	5058	5042	5041	5370	5012	5086	5227	6270	5314	5069	5319

SOURCE: Honolulu Board of REALTORS®, compiled from MLS data.

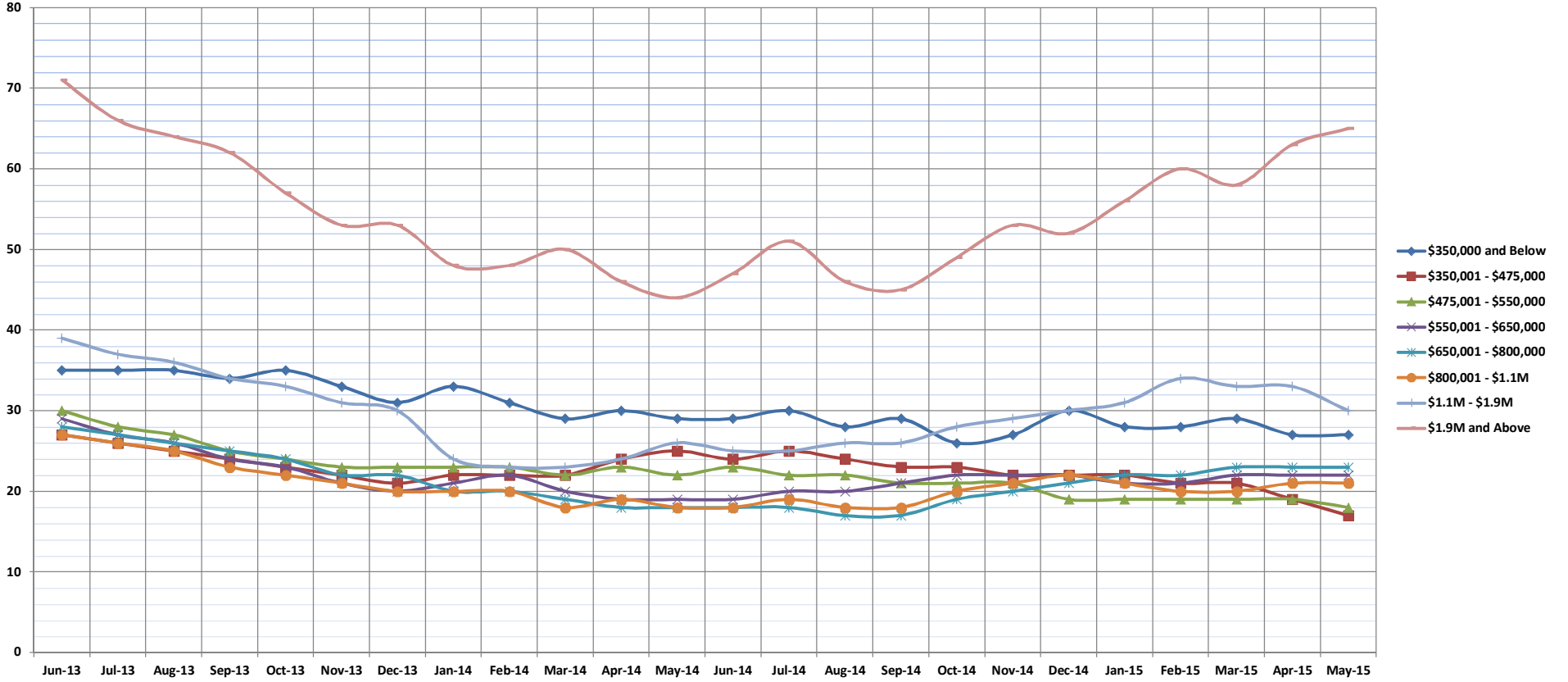


Days on Market Until Sale

May-15

Single Family Homes: Monthly, by Price Range

(The median number of days between when a property is first listed and when an offer is accepted. Based on a 12 month rolling median.)



	Jun-13	Jul-13	Aug-13	Sep-13	Oct-13	Nov-13	Dec-13	Jan-14	Feb-14	Mar-14	Apr-14	May-14	Jun-14	Jul-14	Aug-14	Sep-14	Oct-14	Nov-14	Dec-14	Jan-15	Feb-15	Mar-15	Apr-15	May-15	
\$350,000 and Below	35	35	35	34	35	33	31	33	31	29	30	29	29	30	28	29	26	27	30	28	28	29	27	27	
\$350,001 - \$475,000	27	26	25	24	23	22	21	22	22	22	24	25	24	25	24	23	23	22	22	22	22	22	22	21	17
\$475,001 - \$550,000	30	28	27	25	24	23	23	23	23	22	23	22	23	22	22	21	21	21	19	19	19	19	19	18	
\$550,001 - \$650,000	29	27	26	24	23	21	20	21	22	20	19	19	19	20	20	21	22	22	22	21	21	22	22	22	
\$650,001 - \$800,000	28	27	26	25	24	22	22	20	20	19	18	18	18	18	17	17	19	20	21	22	22	23	23	23	
\$800,001 - \$1.1M	27	26	25	23	22	21	20	20	20	18	19	18	18	19	18	18	20	21	22	21	20	20	21	21	
\$1.1M - \$1.9M	39	37	36	34	33	31	30	24	23	23	24	26	25	25	26	26	28	29	30	31	34	33	33	30	
\$1.9M and Above	71	66	64	62	57	53	53	48	48	50	46	44	47	51	46	45	49	53	52	56	60	58	63	65	
All Single Family Homes	29	28	26	25	24	23	22	22	22	21	21	20	20	20	20	20	21	22	22	22	22	22	22	22	

SOURCE: Honolulu Board of REALTORS®, compiled from MLS data.

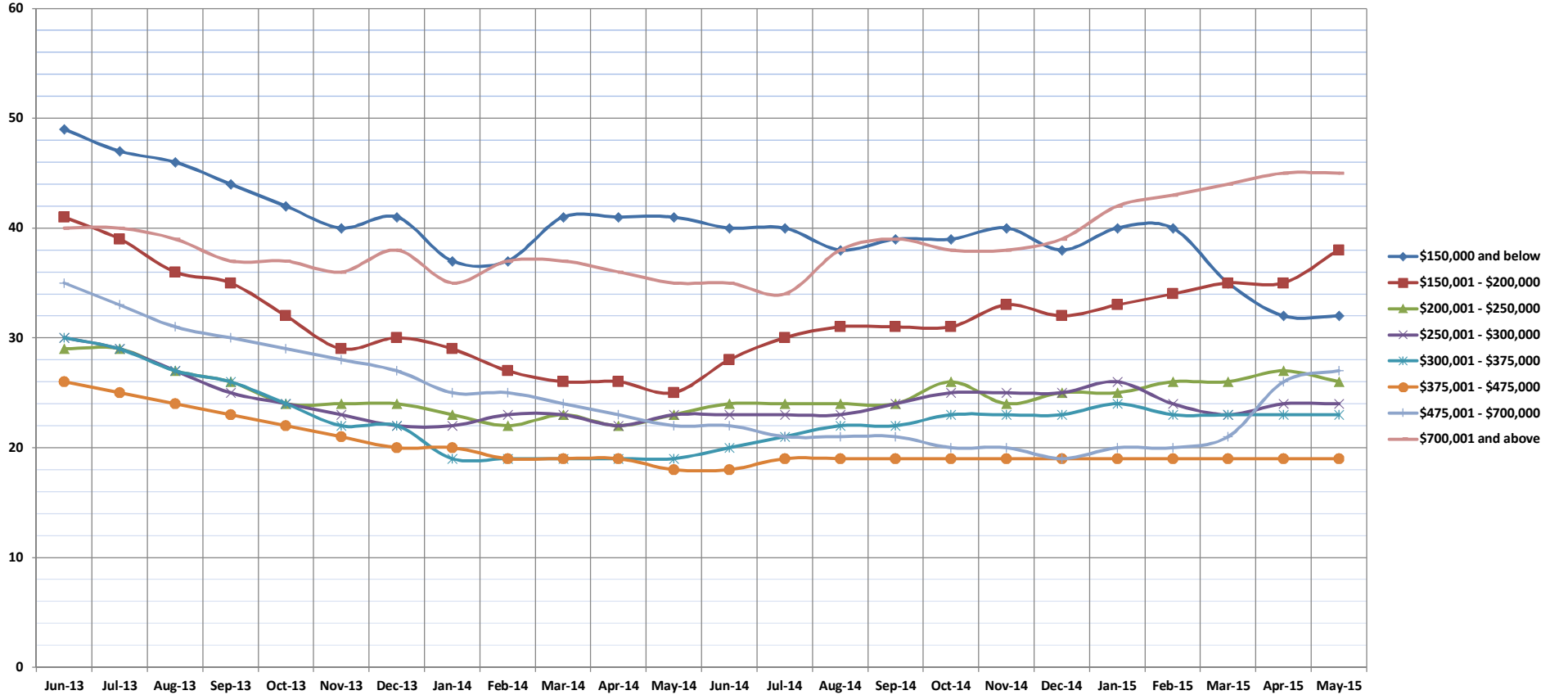


Days on Market Until Sale

May-15

Condos: Monthly, by Price Range

(The median number of days between when a property is first listed and when an offer is accepted. Based on a 12 month rolling median.)



	Jun-13	Jul-13	Aug-13	Sep-13	Oct-13	Nov-13	Dec-13	Jan-14	Feb-14	Mar-14	Apr-14	May-14	Jun-14	Jul-14	Aug-14	Sep-14	Oct-14	Nov-14	Dec-14	Jan-15	Feb-15	Mar-15	Apr-15	May-15
\$150,000 and below	49	47	46	44	42	40	41	37	37	41	41	41	40	40	38	39	39	40	38	40	40	35	32	32
\$150,001 - \$200,000	41	39	36	35	32	29	30	29	27	26	26	25	28	30	31	31	31	33	32	33	34	35	35	38
\$200,001 - \$250,000	29	29	27	26	24	24	24	23	22	23	22	23	24	24	24	24	26	24	25	25	26	26	27	26
\$250,001 - \$300,000	30	29	27	25	24	23	22	22	23	23	22	23	23	23	23	24	25	25	25	26	24	23	24	24
\$300,001 - \$375,000	30	29	27	26	24	22	22	19	19	19	19	19	20	21	22	22	23	23	23	24	23	23	23	23
\$375,001 - \$475,000	26	25	24	23	22	21	20	20	19	19	19	18	18	19	19	19	19	19	19	19	19	19	19	19
\$475,001 - \$700,000	35	33	31	30	29	28	27	25	25	24	23	22	22	21	21	21	20	20	19	20	20	21	26	27
\$700,001 and above	40	40	39	37	37	36	38	35	37	37	36	35	35	34	38	39	38	38	39	42	43	44	45	45
All Condos	32	31	29	27	26	25	24	23	24	23	23	23	23	23	24	24	24	25	24	25	24	24	24	24

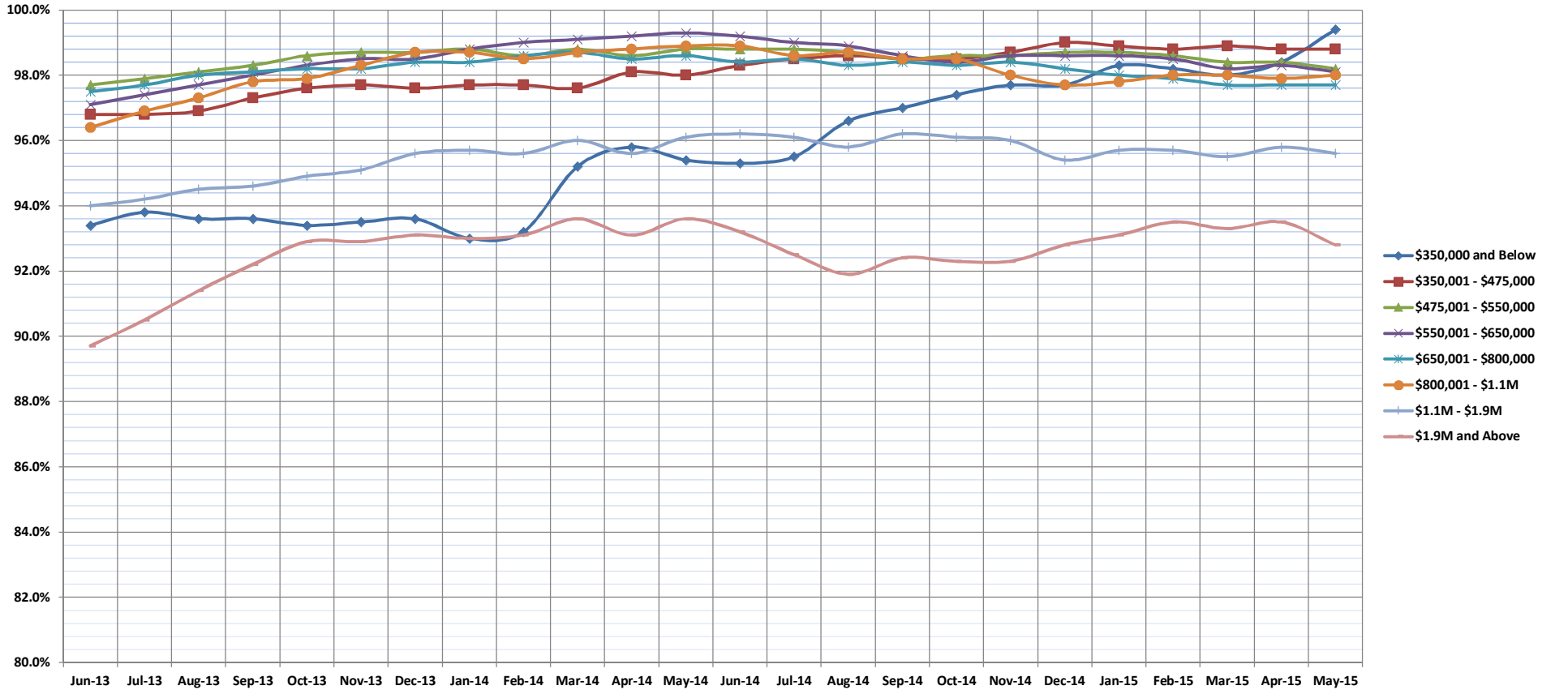
SOURCE: Honolulu Board of REALTORS®, compiled from MLS data.

Percentage of Original Price Received

May-15

Single Family Homes: Monthly, by Price Range

(The average percentage found when dividing a property's sales price by the original list price. Based on a rolling 12 month average.)



	Jun-13	Jul-13	Aug-13	Sep-13	Oct-13	Nov-13	Dec-13	Jan-14	Feb-14	Mar-14	Apr-14	May-14	Jun-14	Jul-14	Aug-14	Sep-14	Oct-14	Nov-14	Dec-14	Jan-15	Feb-15	Mar-15	Apr-15	May-15	
\$350,000 and Below	93.4%	93.8%	93.6%	93.6%	93.4%	93.5%	93.6%	93.0%	93.2%	95.2%	95.8%	95.4%	95.3%	95.5%	96.6%	97.0%	97.4%	97.7%	97.7%	98.3%	98.2%	98.0%	98.4%	99.4%	
\$350,001 - \$475,000	96.8%	96.8%	96.9%	97.3%	97.6%	97.7%	97.6%	97.7%	97.7%	97.6%	98.1%	98.0%	98.3%	98.5%	98.6%	98.5%	98.5%	98.7%	99.0%	98.9%	98.8%	98.9%	98.8%	98.8%	
\$475,001 - \$550,000	97.7%	97.9%	98.1%	98.3%	98.6%	98.7%	98.7%	98.8%	98.6%	98.8%	98.6%	98.8%	98.8%	98.8%	98.7%	98.5%	98.6%	98.6%	98.6%	98.7%	98.7%	98.6%	98.4%	98.4%	98.2%
\$550,001 - \$650,000	97.1%	97.4%	97.7%	98.0%	98.3%	98.5%	98.5%	98.8%	99.0%	99.1%	99.2%	99.3%	99.2%	99.0%	98.9%	98.6%	98.4%	98.6%	98.6%	98.6%	98.6%	98.6%	98.6%	98.5%	98.1%
\$650,001 - \$800,000	97.5%	97.7%	98.0%	98.1%	98.2%	98.2%	98.4%	98.4%	98.6%	98.7%	98.5%	98.6%	98.4%	98.5%	98.3%	98.4%	98.3%	98.4%	98.2%	98.0%	97.9%	97.7%	97.7%	97.7%	
\$800,001 - \$1.1M	96.4%	96.9%	97.3%	97.8%	97.9%	98.3%	98.7%	98.7%	98.5%	98.7%	98.8%	98.9%	98.9%	98.6%	98.7%	98.5%	98.5%	98.0%	97.7%	97.8%	98.0%	98.0%	98.0%	98.0%	
\$1.1M - \$1.9M	94.0%	94.2%	94.5%	94.6%	94.9%	95.1%	95.6%	95.7%	95.6%	96.0%	95.6%	96.1%	96.2%	96.1%	95.8%	96.2%	96.1%	96.0%	95.4%	95.7%	95.7%	95.5%	95.8%	95.6%	
\$1.9M and Above	89.7%	90.5%	91.4%	92.2%	92.9%	92.9%	93.1%	93.0%	93.1%	93.6%	93.1%	93.6%	93.2%	92.5%	91.9%	92.4%	92.3%	92.3%	92.8%	93.1%	93.5%	93.3%	93.5%	92.8%	
All Single Family Homes	96.7%	97.0%	97.3%	97.6%	97.9%	98.3%	98.5%	98.7%	98.6%	98.9%	99.2%	99.3%	99.2%	99.1%	99.1%	99.0%	98.8%	98.6%	98.3%	98.1%	98.2%	97.9%	97.6%	97.5%	

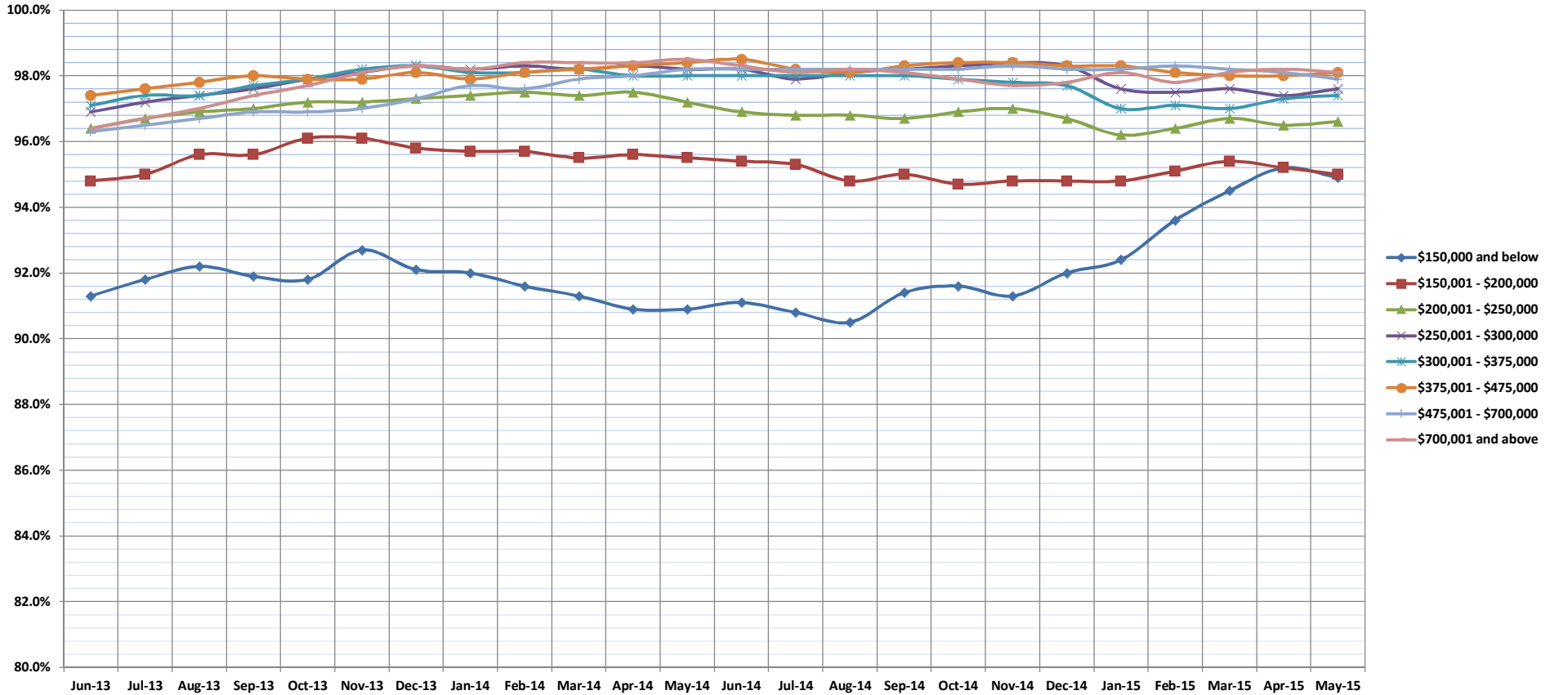
SOURCE: Honolulu Board of REALTORS®, compiled from MLS data.

Percentage of Original Price Received

May-15

Condos: Monthly, by Price Range

(The average percentage found when dividing a property's sales price by the original list price. Based on a rolling 12 month average.)



	Jun-13	Jul-13	Aug-13	Sep-13	Oct-13	Nov-13	Dec-13	Jan-14	Feb-14	Mar-14	Apr-14	May-14	Jun-14	Jul-14	Aug-14	Sep-14	Oct-14	Nov-14	Dec-14	Jan-15	Feb-15	Mar-15	Apr-15	May-15	
\$150,000 and below	91.3%	91.8%	92.2%	91.9%	91.8%	92.7%	92.1%	92.0%	91.6%	91.3%	90.9%	90.9%	91.1%	90.8%	90.5%	91.4%	91.6%	91.3%	92.0%	92.4%	93.6%	94.5%	95.2%	94.9%	
\$150,001 - \$200,000	94.8%	95.0%	95.6%	95.6%	96.1%	96.1%	95.8%	95.7%	95.7%	95.5%	95.6%	95.5%	95.4%	95.3%	94.8%	95.0%	94.7%	94.8%	94.8%	94.8%	95.1%	95.4%	95.2%	95.0%	
\$200,001 - \$250,000	96.4%	96.7%	96.9%	97.0%	97.2%	97.2%	97.3%	97.4%	97.5%	97.4%	97.5%	97.2%	96.9%	96.8%	96.8%	96.7%	96.9%	97.0%	96.7%	96.2%	96.4%	96.7%	96.5%	96.6%	
\$250,001 - \$300,000	96.9%	97.2%	97.4%	97.6%	97.9%	98.1%	98.3%	98.2%	98.3%	98.2%	98.3%	98.2%	98.2%	97.9%	98.1%	98.2%	98.3%	98.4%	98.3%	97.6%	97.5%	97.6%	97.4%	97.6%	
\$300,001 - \$375,000	97.1%	97.4%	97.4%	97.7%	97.9%	98.2%	98.3%	98.1%	98.1%	98.2%	98.0%	98.0%	98.0%	98.0%	98.0%	98.0%	98.0%	97.9%	97.8%	97.7%	97.0%	97.1%	97.0%	97.3%	97.4%
\$375,001 - \$475,000	97.4%	97.6%	97.8%	98.0%	97.9%	97.9%	98.1%	97.9%	98.1%	98.2%	98.3%	98.4%	98.5%	98.2%	98.1%	98.3%	98.4%	98.4%	98.3%	98.2%	98.2%	98.3%	98.2%	98.1%	97.9%
\$475,001 - \$700,000	96.3%	96.5%	96.7%	96.9%	96.9%	97.0%	97.3%	97.7%	97.6%	97.9%	98.0%	98.2%	98.2%	98.2%	98.2%	98.2%	98.2%	98.2%	98.3%	98.2%	98.2%	98.3%	98.2%	98.1%	97.9%
\$700,001 and above	95.3%	95.4%	96.0%	96.4%	96.5%	96.6%	96.6%	96.8%	97.0%	97.1%	96.9%	96.6%	96.2%	96.4%	95.1%	95.0%	95.1%	95.2%	95.2%	94.8%	94.7%	94.7%	94.7%	95.0%	
All Condos	96.4%	96.7%	97.0%	97.4%	97.7%	98.1%	98.3%	98.2%	98.4%	98.4%	98.4%	98.5%	98.3%	98.1%	98.2%	98.1%	97.9%	97.7%	97.8%	98.1%	97.8%	98.1%	98.2%	98.1%	

SOURCE: Honolulu Board of REALTORS®, compiled from MLS data.

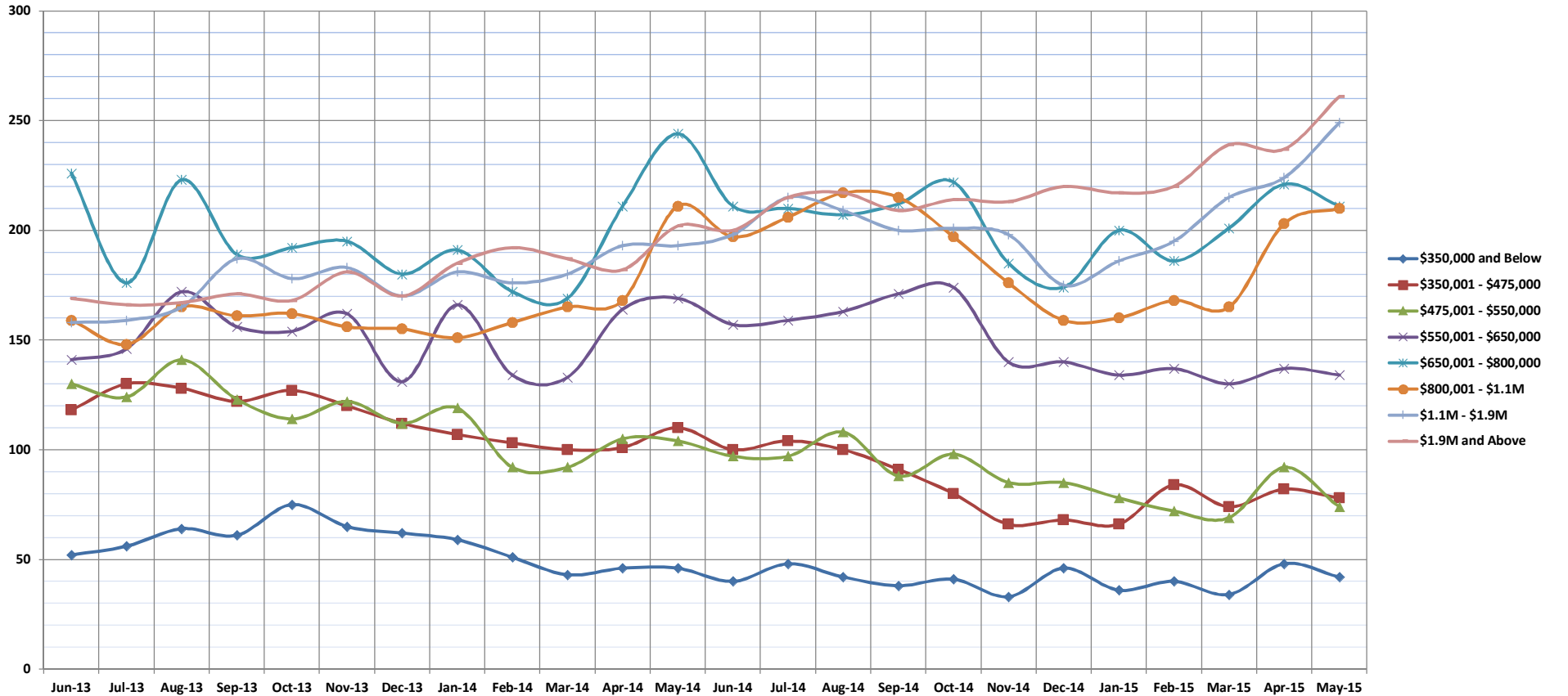


Inventory of Homes for Sale

May-15

Single Family Homes: Monthly, by Price Range

(The number of properties available for sale in active status at the end of a given month.)



	Jun-13	Jul-13	Aug-13	Sep-13	Oct-13	Nov-13	Dec-13	Jan-14	Feb-14	Mar-14	Apr-14	May-14	Jun-14	Jul-14	Aug-14	Sep-14	Oct-14	Nov-14	Dec-14	Jan-15	Feb-15	Mar-15	Apr-15	May-15
\$350,000 and Below	52	56	64	61	75	65	62	59	51	43	46	46	40	48	42	38	41	33	46	36	40	34	48	42
\$350,001 - \$475,000	118	130	128	122	127	120	112	107	103	100	101	110	100	104	100	91	80	66	68	66	84	74	82	78
\$475,001 - \$550,000	130	124	141	123	114	122	112	119	92	92	105	104	97	97	108	88	98	85	85	78	72	69	92	74
\$550,001 - \$650,000	141	146	172	156	154	162	131	166	134	133	164	169	157	159	163	171	174	140	140	134	137	130	137	134
\$650,001 - \$800,000	226	176	223	189	192	195	180	191	172	169	211	244	211	210	207	212	222	185	174	200	186	201	221	211
\$800,001 - \$1.1M	159	148	165	161	162	156	155	151	158	165	168	211	197	206	217	215	197	176	159	160	168	165	203	210
\$1.1M - \$1.9M	158	159	165	187	178	183	170	181	176	180	193	193	198	215	209	200	201	198	175	186	195	215	224	249
\$1.9M and Above	169	166	167	171	168	181	170	185	192	187	182	202	200	215	217	209	214	213	220	217	220	239	237	261
All Single Family Homes	1153	1105	1225	1170	1170	1184	1092	1159	1078	1069	1170	1279	1200	1254	1263	1224	1227	1096	1067	1077	1102	1127	1244	1259

SOURCE: Honolulu Board of REALTORS®, compiled from MLS data.

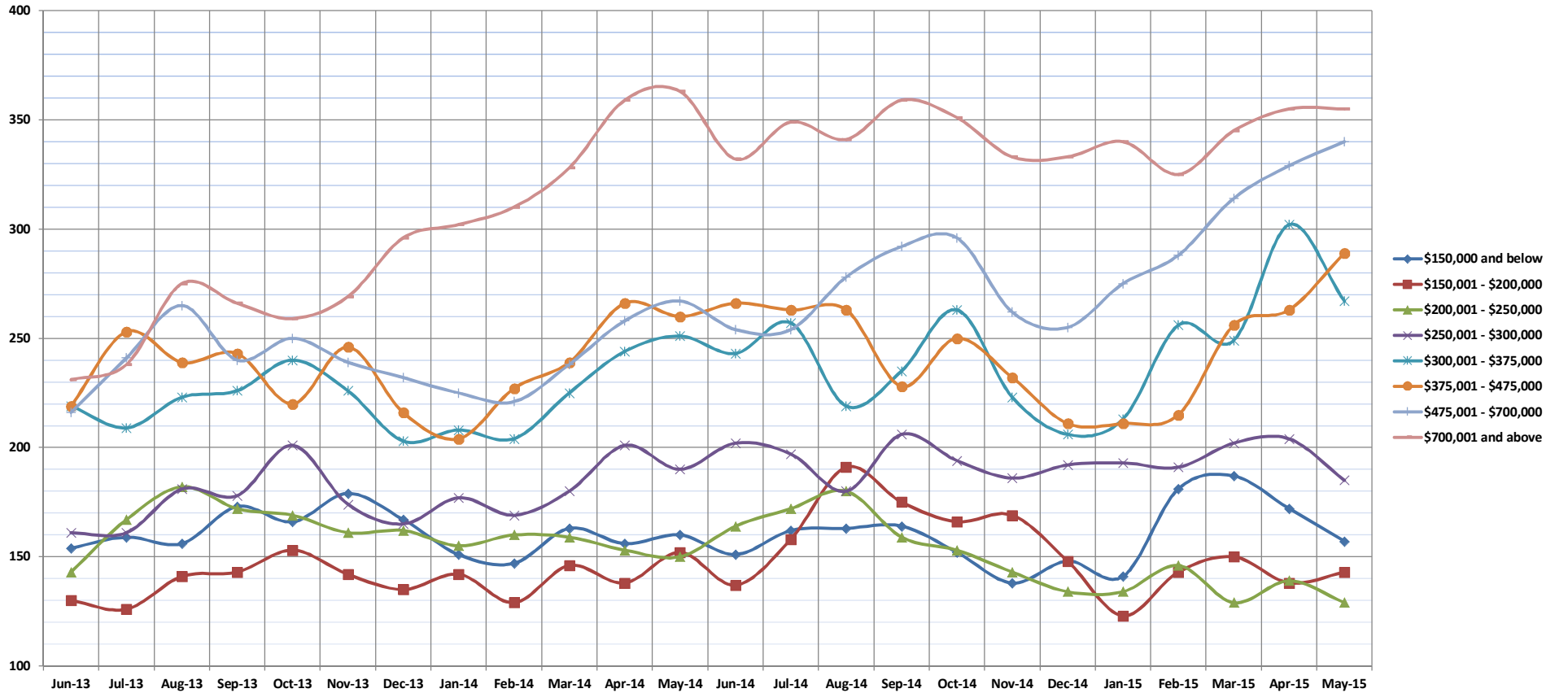


Inventory of Homes for Sale

May-15

Condos: Monthly, by Price Range

(The number of properties available for sale in active status at the end of a given month.)



	Jun-13	Jul-13	Aug-13	Sep-13	Oct-13	Nov-13	Dec-13	Jan-14	Feb-14	Mar-14	Apr-14	May-14	Jun-14	Jul-14	Aug-14	Sep-14	Oct-14	Nov-14	Dec-14	Jan-15	Feb-15	Mar-15	Apr-15	May-15
\$150,000 and below	154	159	156	173	166	179	167	151	147	163	156	160	151	162	163	164	152	138	148	141	181	187	172	157
\$150,001 - \$200,000	130	126	141	143	153	142	135	142	129	146	138	152	137	158	191	175	166	169	148	123	143	150	138	143
\$200,001 - \$250,000	143	167	182	172	169	161	162	155	160	159	153	150	164	172	180	159	153	143	134	134	146	129	139	129
\$250,001 - \$300,000	161	161	181	178	201	174	165	177	169	180	201	190	202	197	180	206	194	186	192	193	191	202	204	185
\$300,001 - \$375,000	219	209	223	226	240	226	203	208	204	225	244	251	243	257	219	235	263	223	206	213	256	249	302	267
\$375,001 - \$475,000	219	253	239	243	220	246	216	204	227	239	266	260	266	263	228	250	232	211	211	215	256	263	289	
\$475,001 - \$700,000	216	241	265	240	250	239	232	225	221	238	258	267	254	254	278	292	296	262	255	275	288	314	329	340
\$700,001 and above	231	238	275	266	259	269	296	302	310	328	359	363	332	349	341	359	351	333	333	340	325	345	355	355
All Condos	1473	1554	1662	1641	1658	1636	1576	1564	1567	1678	1775	1793	1749	1812	1815	1818	1825	1686	1627	1630	1745	1832	1902	1865

SOURCE: Honolulu Board of REALTORS®, compiled from MLS data.

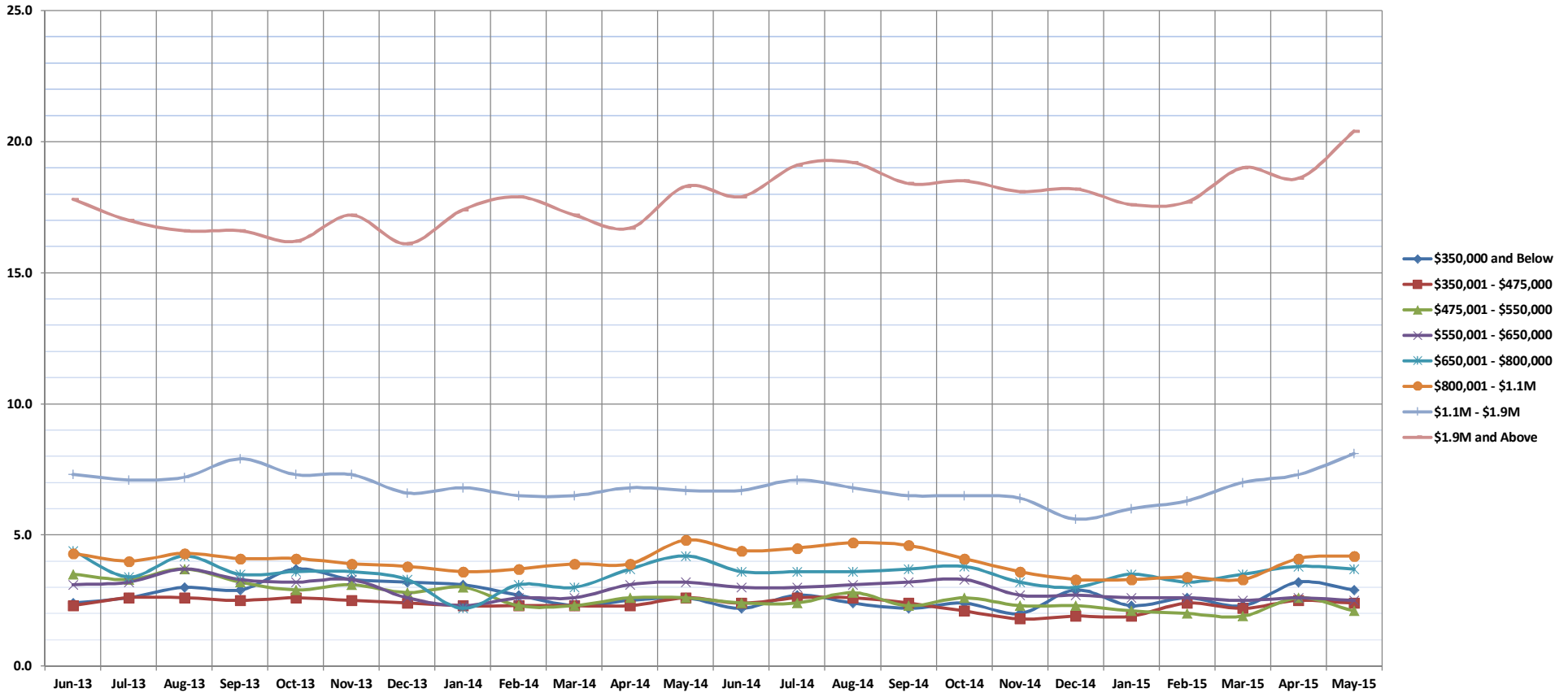


Months Supply of Inventory

May-15

Single Family Homes: Monthly, by Price Range

(Compares the number of active listings available to the average monthly pending sales from the last 12 months.)



	Jun-13	Jul-13	Aug-13	Sep-13	Oct-13	Nov-13	Dec-13	Jan-14	Feb-14	Mar-14	Apr-14	May-14	Jun-14	Jul-14	Aug-14	Sep-14	Oct-14	Nov-14	Dec-14	Jan-15	Feb-15	Mar-15	Apr-15	May-15
\$350,000 and Below	2.4	2.6	3.0	2.9	3.7	3.3	3.2	3.1	2.7	2.3	2.5	2.6	2.2	2.7	2.4	2.2	2.4	2.0	2.9	2.3	2.6	2.3	3.2	2.9
\$350,001 - \$475,000	2.3	2.6	2.6	2.5	2.6	2.5	2.4	2.3	2.3	2.3	2.3	2.6	2.4	2.6	2.6	2.4	2.1	1.8	1.9	1.9	2.4	2.2	2.5	2.4
\$475,001 - \$550,000	3.5	3.3	3.7	3.2	2.9	3.1	2.8	3.0	2.3	2.3	2.6	2.6	2.4	2.4	2.8	2.3	2.6	2.3	2.3	2.1	2.0	1.9	2.6	2.1
\$550,001 - \$650,000	3.1	3.2	3.7	3.3	3.2	3.3	2.6	2.3	2.6	2.6	3.1	3.2	3.0	3.0	3.1	3.2	3.3	2.7	2.7	2.6	2.6	2.5	2.6	2.5
\$650,001 - \$800,000	4.4	3.4	4.2	3.5	3.6	3.6	3.3	2.2	3.1	3.0	3.7	4.2	3.6	3.6	3.6	3.7	3.8	3.2	3.0	3.5	3.2	3.5	3.8	3.7
\$800,001 - \$1.1M	4.3	4.0	4.3	4.1	4.1	3.9	3.8	3.6	3.7	3.9	3.9	4.8	4.4	4.5	4.7	4.6	4.1	3.6	3.3	3.3	3.4	3.3	4.1	4.2
\$1.1M - \$1.9M	7.3	7.1	7.2	7.9	7.3	7.3	6.6	6.8	6.5	6.5	6.8	6.7	6.7	7.1	6.8	6.5	6.5	6.4	5.6	6.0	6.3	7.0	7.3	8.1
\$1.9M and Above	17.8	17.0	16.6	16.6	16.2	17.2	16.1	17.4	17.9	17.2	16.7	18.3	17.9	19.1	19.2	18.4	18.5	18.1	18.2	17.6	17.7	19.0	18.6	20.4
All Single Family Homes	4.2	4.0	4.4	4.1	4.1	4.1	3.8	4.0	3.7	3.7	4.0	4.3	4.0	4.2	4.3	4.2	4.2	3.8	3.7	3.7	3.8	3.9	4.3	4.4

SOURCE: Honolulu Board of REALTORS®, compiled from MLS data.

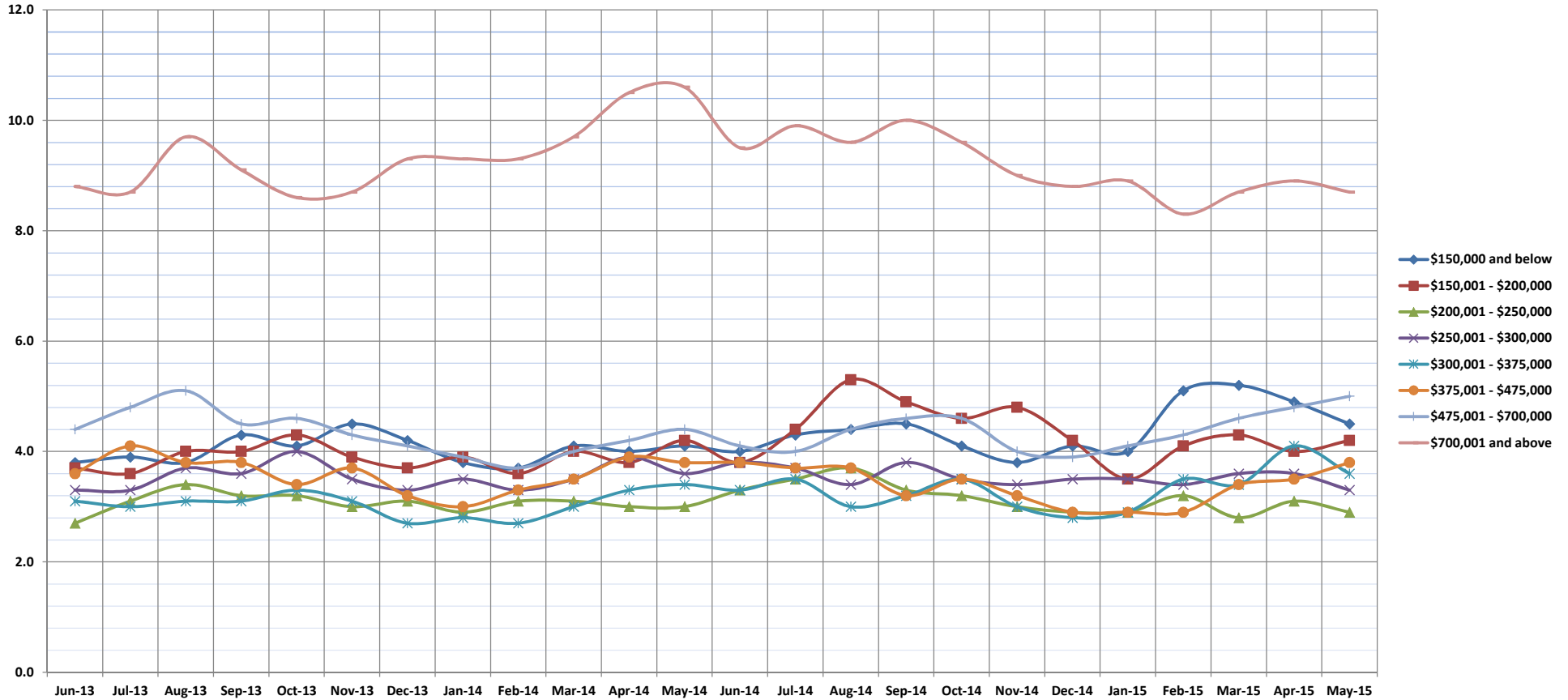


Months Supply of Inventory

May-15

Condos: Monthly, by Price Range

(Compares the number of active listings available to the average monthly pending sales from the last 12 months.)



	Jun-13	Jul-13	Aug-13	Sep-13	Oct-13	Nov-13	Dec-13	Jan-14	Feb-14	Mar-14	Apr-14	May-14	Jun-14	Jul-14	Aug-14	Sep-14	Oct-14	Nov-14	Dec-14	Jan-15	Feb-15	Mar-15	Apr-15	May-15
\$150,000 and below	3.8	3.9	3.8	4.3	4.1	4.5	4.2	3.8	3.7	4.1	4.0	4.1	4.0	4.3	4.4	4.5	4.1	3.8	4.1	4.0	5.1	5.2	4.9	4.5
\$150,001 - \$200,000	3.7	3.6	4.0	4.0	4.3	3.9	3.7	3.9	3.6	4.0	3.8	4.2	3.8	4.4	5.3	4.9	4.6	4.8	4.2	3.5	4.1	4.3	4.0	4.2
\$200,001 - \$250,000	2.7	3.1	3.4	3.2	3.2	3.0	3.1	2.9	3.1	3.1	3.0	3.0	3.3	3.5	3.7	3.3	3.2	3.0	2.9	2.9	3.2	2.8	3.1	2.9
\$250,001 - \$300,000	3.3	3.3	3.7	3.6	4.0	3.5	3.3	3.5	3.3	3.5	3.9	3.6	3.8	3.7	3.4	3.8	3.5	3.4	3.5	3.5	3.4	3.6	3.6	3.3
\$300,001 - \$375,000	3.1	3.0	3.1	3.1	3.3	3.1	2.7	2.8	2.7	3.0	3.3	3.4	3.3	3.5	3.0	3.2	3.5	3.0	2.8	2.9	3.5	3.4	4.1	3.6
\$375,001 - \$475,000	3.6	4.1	3.8	3.8	3.4	3.7	3.2	3.0	3.3	3.5	3.9	3.8	3.8	3.7	3.7	3.2	3.5	3.2	2.9	2.9	2.9	3.4	3.5	3.8
\$475,001 - \$700,000	4.4	4.8	5.1	4.5	4.6	4.3	4.1	3.9	3.7	4.0	4.2	4.4	4.1	4.0	4.4	4.6	4.6	4.0	3.9	4.1	4.3	4.6	4.8	5.0
\$700,001 and above	8.8	8.7	9.7	9.1	8.6	8.7	9.3	9.3	9.3	9.7	10.5	10.6	9.5	9.9	9.6	10.0	9.6	9.0	8.8	8.9	8.3	8.7	8.9	8.7
All Condos	3.8	4.0	4.2	4.1	4.1	4.0	3.8	3.8	3.8	4.0	4.3	4.3	4.2	4.3	4.3	4.3	4.3	4.0	3.8	3.8	4.0	4.2	4.4	4.3

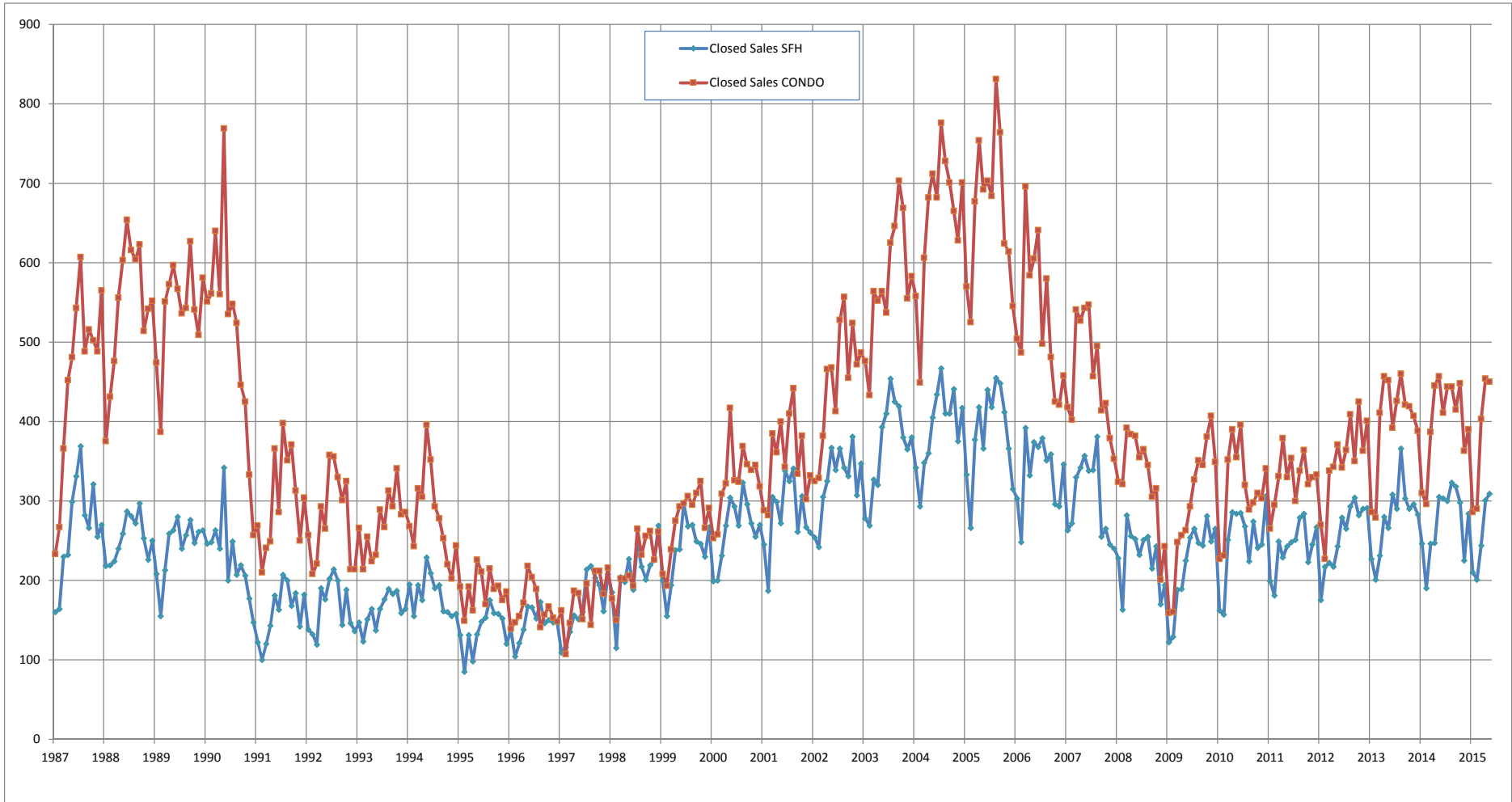
SOURCE: Honolulu Board of REALTORS® , compiled from MLS data.



Closed Sales

Single Family Homes and Condos

OAHU, HAWAII: Jan 1987 to the Present

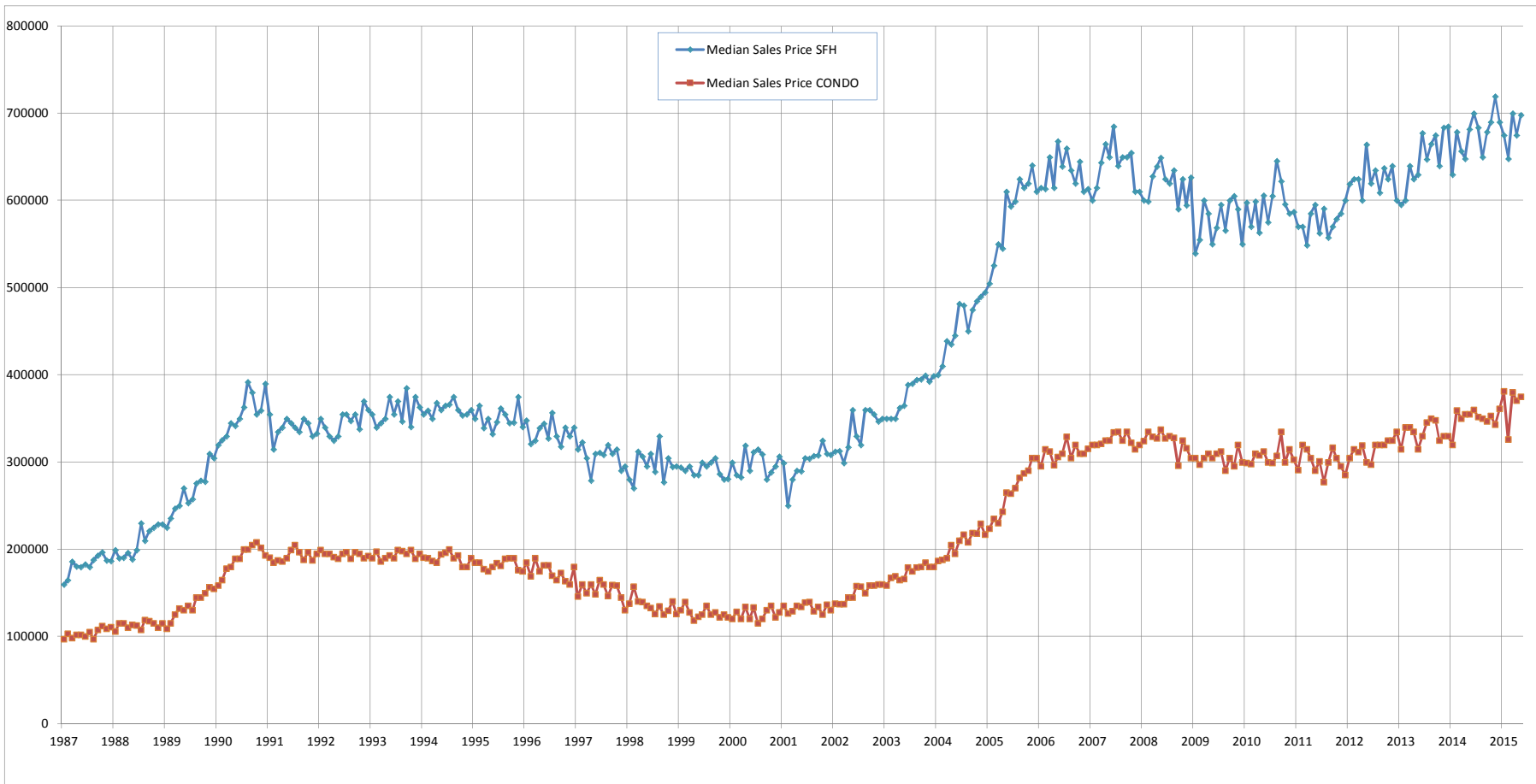


SOURCE: Honolulu Board of REALTORS® , compiled from MLS data.

Median Sales Price

Single Family Homes and Condos

OAHU, HAWAII: Jan 1987 to the Present



SOURCE: Honolulu Board of REALTORS®, compiled from MLS data.