

NORTH SHORE NEIGHBORHOODS

Speakers:

- § Joni Shiraishi, Aloha Island Homes
- § Erica Lehmkuhl, Seaside Realty

Moderated by:
Peter Chessen, Coldwell Banker Realty



OVERVIEW



HISTORY

Development
of North Shore
Region



STATISTICS

Key Market
Statistics for
North Shore



TIPS

Buying and
Selling in
North Shore

NORTH SHORE REGIONAL MAP

§ The North Shore stretches along Oahu's northern coastline between **Ka'ena Point and Laie**.

§ The North Shore of Oahu, specifically **Waialua, Haleiwa, Kahuku and Laie**, has a history that spans from ancient Hawaiian agricultural communities to plantation towns and today's mix of rural communities, tourism, and agriculture.



HAWAII SEA LEVEL RISE VIEWER

- § Across the Hawaiian Islands vulnerability to coastal hazards is increasing with climate change and sea level rise and as development along our shorelines continues to expand
- § Access to high-resolution local hazard exposure and vulnerability data and maps is critical for communities to understand and plan for increased coastal flooding and erosion with sea level rise
- § The [Hawai'i Sea Level Rise Viewer](http://www.hawaiisealevelriseviewer.org) serves as an online interactive atlas accompanying the Hawai'i Sea Level Rise Vulnerability and Adaptation Report, completed in December 2017





SHORELINE

- § The shoreline plays a vital role in sustaining Hawai'i's coastal communities, economy and infrastructure
- § Research shows some coastal areas continue to sink at steady rates, increasing long-term flood risks
- § The study by UH at Manoa found that Oahu's island-wide subsidence rate is low, though localized areas on the south shore are sinking nearly 40 times faster. Critical data around subsidence and sea level rise can inform flood exposure assessments, infrastructure resilience and long-term planning
- § HBR's City Affairs Committee is working to help REALTORS® and clients navigate the complexities of shoreline properties and coastal zone development. Information will be shared at the July 24th Virtual Agent Forum



MODERN NORTH SHORE

Today each town retains their own identity.

Laie



- § Center of Polynesian and Latter Day Saints culture
- § Home of the Laie Temple and university community

Kahuku



- § Known for shrimp farms, agriculture, and surfing
- § Strong plantation-era multicultural heritage
- § Home of the famous Kahuku high school football tradition

Haleiwa



- § Historic commercial center
- § Surf culture hub
- § Art galleries, restaurants, and shops
- § Gateway to the North Shore's famous beaches

Waialua



- § Historic commercial center
- § Surf culture hub
- § Art galleries, restaurants, and shops
- § Gateway to the North Shore's famous beaches

COASTAL VIEW - KAHANA TO LAIE

The stretch from **Kahana to Laie** is one of the most scenic and culturally rich parts of Oahu because of the combination of ocean views, jungle valleys and steep mountain ridges.

Interesting facts and stories about the area:

Kahana Bay



One of the few remaining ahupua'a in Hawaii that still stretch from the mountains to the sea under state management. Ancient Hawaiians used this land division system to sustainably share water, farming and fishing resources.

Kahana State Park



Ahupua'a O Kahana State Park was the first park in Hawaii created to preserve both natural land and traditional Hawaiian lifestyles. Area famous for dramatic scenery in movies and TV Shows: Jurassic Park, 50 First Dates and Lost.

Crouching Lion



Crouching Lion near Kahana gets its name from the mountain range that looks like a crouching lion from the highway. It's one of the most photographed spots on Oahu.

COASTAL VIEW - KAHANA TO LAIE

The stretch from **Kahana to Laie** is one of the most scenic and culturally rich parts of Oahu because of the combination of ocean views, jungle valleys and steep mountain ridges.

Interesting facts and stories about the area:

Laie Point



Laie Point is tied to Hawaiian legend. According to mo'olelo, a giant lizard-like mo'o named Laniloa was cut into pieces by a warrior named Kana, creating offshore islets.

Goat Island



Offshore near Malaekahana Bay sits Goat Island, also Moku'auia. During calm conditions, people sometimes wade or kayak out to it, and it serves as a seabird sanctuary.

LAIE - KAHUKU ATTRACTIONS



Laie Temple



Laie Point Park



Polynesian Cultural Center



Hukilau Marketplace



Kahuku Sugar Mill



Kahuku Farm



Gunstock Ranch



Turtle Bay Resort



LAIE

- § Laie, comes from the Hawaiian word for the *'ie'ie* vine, a sacred plant found in the area
- § The area is known for its strong connection to the Church of Jesus Christ of Latter-Day Saints, its scenic coastline, and its cultural attractions
- § It transitioned from an ancient sanctuary and sugar plantation into a vibrant educational and spiritual hub for the Pacific
- § As the gathering place model shifted in the 20th century, Laie evolved into a major center for education and Polynesian culture



LAIE

- § Laie was established as a planned community by The Church of Jesus Christ of Latter-day Saints and remains closely connected to the Church today
- § Much of the town's property, infrastructure and utilities are managed by [Hawaii Reserves, Inc. \(HRI\)](#) including its subsidiaries:
 - Laie Water Company, which provides the community's water system and
 - Laie Treatment Works, which manages the wastewater system
- § HRI also oversees many community properties, streets and common areas, while traffic and parking enforcement are handled by City and County of Honolulu

LAIE SPIRITUAL AND EDUCATION HUB

- 1865 Members of The Church of Jesus Christ of LDS purchased thousands of acres in Laie
- 1919 The Laie Hawaii Temple, the first LDS temple built outside the continental United States, was dedicated near an ancient Hawaiian *pu'uhonua* (place of refuge)
- 1955 Ground was broken for BYU-Hawaii in 1955, and the campus was completed and dedicated in 1958
- 1963 The Polynesian Cultural Center opened to help BYU-Hawaii students fund their education while sharing Polynesian cultures with visitors



Laie Temple



Polynesian Cultural Center



BYU Hawaii



KAHUKU

- § Kahuku means *"the projection"* or *"the point"*
- § Native Hawaiians settled the area centuries ago, relying on fishing, farming, and aquaculture. Region was known for its fertile land and coastal resources
- § Sugar plantations attracted workers and shaped Kahuku's multicultural community
- § Today, Kahuku is recognized for its: Rich plantation heritage, Tourism industry, Agriculture, Renewable energy projects [Kahuku Wind Farm] and Kahuku High & Intermediate School community

KAHUKU PLANTATION

1890 ● The Kahuku Sugar Company was established, becoming the major economic force in the area

1899-1903 ● OR&L extends its line around Oahu's North Shore, eventually reaching Kahuku

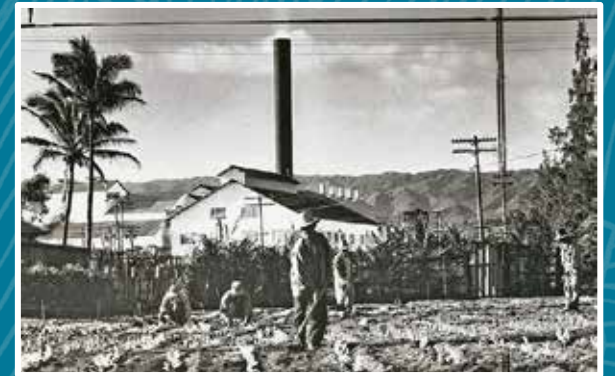
Early 1900s ● OR&L's rail network grows to approximately 71 miles, connecting Honolulu with Kahuku. Koolau Railway followed a 10-mile route from Kahuku to Kahana

1971 ● Sugar plantation operations ends in Kahuku

Today ● Former plantation lands support diversified agriculture, aquaculture, education, residential communities, and tourism on Oahu's North Shore



Kahuku Sugar Mill in 1950



Sugar Plantation Workers



Kahuku Land & Company Railway

TURTLE BAY

- § The resort opened in May 1972 as the Kuilima Resort Hotel & Country Club. The name Kuilima means *"joining hands"*
- § Developed by casino entrepreneur Del Webb, the property was originally envisioned as the site of Oahu's first casino. However, a statewide gaming initiative proposed in the mid-1970s failed to gain voter approval, and casino gambling was never introduced
- § Today, the Ritz-Carlton Oahu, Turtle Bay offers a wide range of experiences, from surfing, horseback riding, golf, and ocean adventures to diverse dining options showcasing fresh island flavors and locally inspired cuisine

alaia

HO'OLANA

OFF THE LIP



THEN



1972. Kuilima Resort Hotel

NOW



2026. Ritz Carlton Oahu

KAHUKU HIGH SCHOOL & INTERMEDIATE



Established in 1897 is one of Hawaii's oldest public schools. Unlike many high schools, Kahuku is both a high school and intermediate school, serving students from 7th through 12th grade



Ranked nationally in the United States for football and has won numerous state championships



Earned state and national recognition not only in sports but also through its band and choral music programs



The school reflects the rich Hawaiian and Polynesian heritage of the North Shore, with many cultural performances and traditions celebrated throughout the year



Notable Alumni include Chef Sam Choy, John John Florence (World Champion Surfer), Jack Johnson (Musician), Natasha Kia (Olympic Gold Medalist, Soccer), Keala Settle (Broadway & Film Actress and Singer), and more. List of recognized alumni can be viewed at

<https://www.kahukuhigh.org/apps/pages/recognized-alumni>.

HALEIWA

Gateway to the North Shore

- § Haleiwa means "*House of the 'Iwa bird*" (frigatebird)
- § In 1898 businessman Benjamin Dillingham built the famous Haleiwa Hotel and extended the railroad from Honolulu to the North Shore. The town essentially grew around the hotel and rail station
- § The railroad allowed Honolulu residents to vacation on the North Shore and helped transport sugar from Waialua plantations
- § By the early 1900s, Haleiwa became the commercial center of the North Shore



Haleiwa Hotel



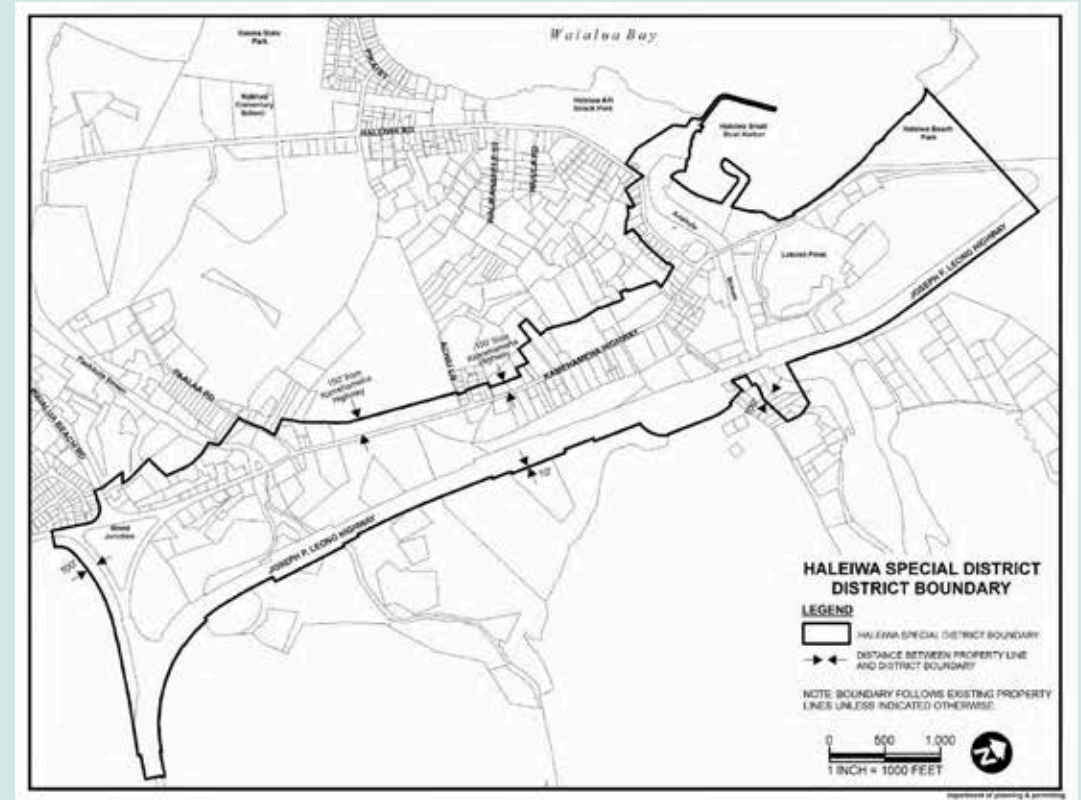
Railroad Line built in 1899

Ran from Honolulu around
North Shore to Kahuku

HALEIWA SPECIAL DISTRICT

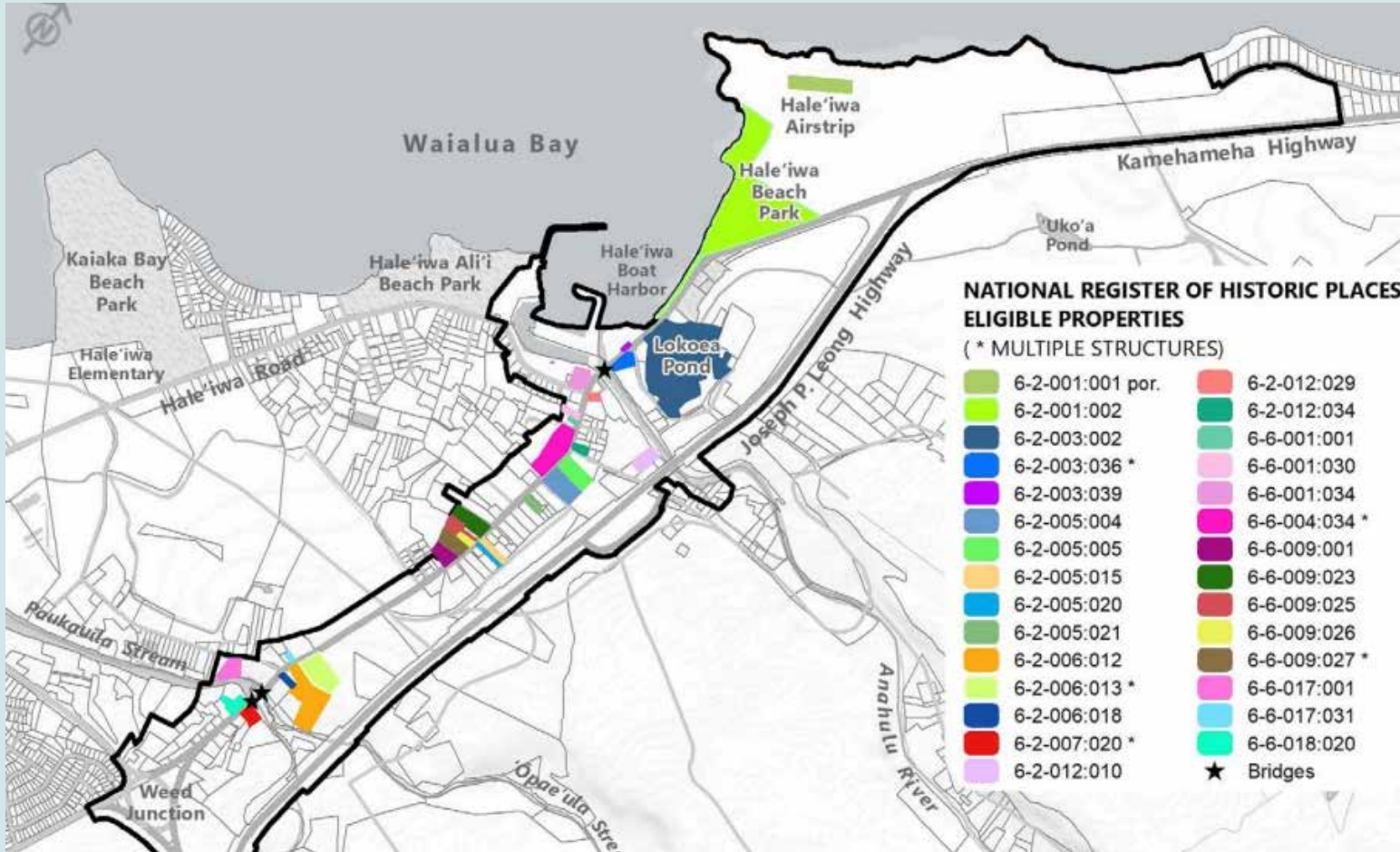
The Haleiwa Special District is a special zoning and design-control area covering much of historic Haleiwa. It was created by the City and County of Honolulu to:

- § Preserve Haleiwa's rural, small town character, particularly along Kamehameha Highway and Haleiwa Road
- § Protect historic, cultural, scenic, and architecturally significant buildings and sites
- § Require new development compatible with plantation-era design
- § Maintain waterways, open spaces, mature trees, and views



[Zoning & Special District Design Guidelines-Haleiwa](#)
[Honolulu C&C Haleiwa Special District Guidelines](#)

HALEIWA HISTORIC PROPERTIES



30+ Historic Properties in Haleiwa
Several properties on historical registry:

- 1832 Liliuokalani Protestant Church
- 1915 Takahashi Building
- 1920s Matsumoto Shave Ice
- 1921 Anahulu Stream Bridge
- 1921 Surf N Sea
- 1925 Shingon Mission
- 1927 Bank of Bishop & Company
- 1937 Waialua Community Association

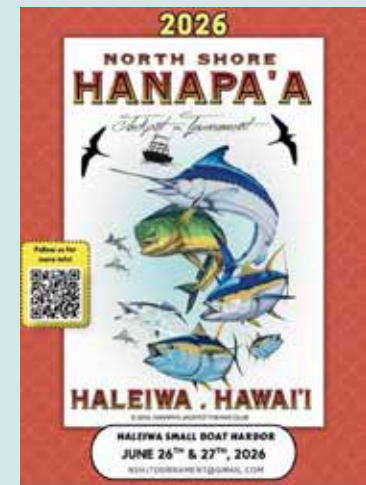
NORTH SHORE CHAMBER OF COMMERCE

- § The North Shore Chamber of Commerce is a nonprofit business and community organization serving the North Shore of Oahu, from Ka'ena Point to Kualoa
- § North Shore Chamber of Commerce has a visitor center across from the post office in Haleiwa and appears to be the only chamber of commerce on Oahu with a dedicated Visitor & Business Services Center, providing year-round support for visitors, residents, and local businesses
- § For over 40 years, the Chamber has supported the North Shore economy through advocacy, business programs, community events, and initiatives that promote sustainable growth, cultural preservation, and environmental stewardship



NORTH SHORE CHAMBER OF COMMERCE

- § The North Shore Chamber of Commerce supports local businesses and strengthens the community through annual events community traditions such as the Haleiwa Arts Festival and Hanapaa Fishing Tournament
- § Works alongside organizations like Manu O Ke Kai and Haleiwa Outrigger Canoe Clubs, whose volunteers provide invaluable support through events, food drives, holiday gift collections, and service projects benefiting North Shore residents in need



HALEIWA RESTAURANT & SHOPS



CONSERVATION EFFORTS



[Legacy Forest](#) is centered on restoring and protecting Hawai'i's native forests while creating a sustainable model for long-term conservation



[Haleiwa Food Forest](#) is a community-run agricultural site where locals grow and harvest free food. The project includes roadside plantings of dwarf coconut trees, ulu (breadfruit), and lillikoi vines to provide easy public access to fresh produce



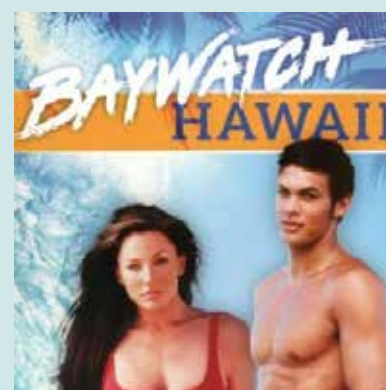
[Loko Ea Fishpond](#) is an ancient Hawaiian fishpond near Haleiwa on O'ahu's North Shore, estimated to be 400–500 years old. Today, restoration efforts preserve it as a living classroom for Hawaiian culture and history



[Shark Cove Restoration Project](#) restores native coastal habitat and reduces runoff to protect marine life and improve ecosystem health in the Pupukea Marine Life Conservation District

MOVIES & TV SHOWS

Filmed on North Shore





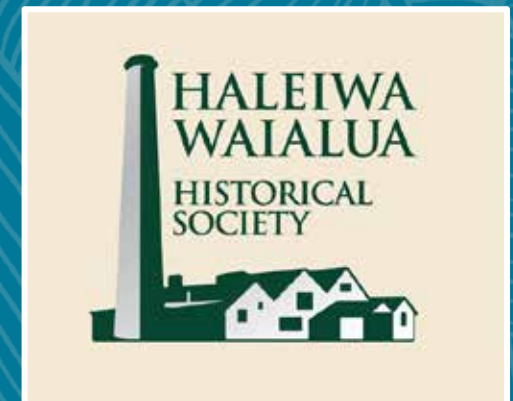
WAIMEA

- § Waimea is steeped in both ancient Hawaiian history and modern surf lore. Waimea is a stunning destination split into two main attractions Waimea Bay and Waimea Valley
- § **Waimea Bay** is a crescent-shaped natural bay located in Haleiwa, widely known for its big wave surfing and the Eddie Aikau Invitational
- § **Waimea Valley** is a lush cultural and botanical park rooted in Native Hawaiian history. More than 3,000 tropical plant species fill 60 themed gardens along a paved, accessible path that leads to **Waimea Falls**, where visitors can enjoy a safe, refreshing swim with lifeguards on duty



WAIALUA

- § Hawaiians settled in the Waialua District around 1000 A.D. and established villages along valleys, streams, and bays such as Anahulu Valley
- § The North Shore was part of a highly organized Hawaiian society divided into land units called ahupuaa, which ran from the mountains to the sea
- § The fertile lands around Waialua, Waimea, and Kahuku supported large populations through irrigated taro fields (lo'i kalo), sweet potatoes, breadfruit, fishing, and aquaculture
- § Streams such as the Anahulu and Kaukonahua provided water for extensive agricultural systems



WAIALUA SUGAR MILL

- 1865 Sugar cultivation begins
- 1898 Formation of the **Waialua Agricultural Company**. This marks the shift to large-scale industrialization, resulting in a new mill, 30 miles of railway, and extensive irrigation networks
- 1934 **Waialua Community Association founded**. The first community association in Hawaii, created to support community development, recreation, education, and civic life on Oahu's North Shore.
- 1996 Waialua Sugar Mill closes
- Today Historic Waialua Sugar Mill operates as an industrial park and boutique shopping center



Waialua Sugar Mill



Waialua Agricultural Company

WAIALUA HIGH SCHOOL & INTERMEDIATE



Founded in 1914 as Mokuleia School, Waialua grew from a one-room schoolhouse serving the North Shore community into today's intermediate and high school campus. The school adopted its current name in 1937



Waialua offers a broad athletics program, including surfing, canoe paddling, wrestling, football, soccer, swimming, tennis, golf, and girls' flag football



In May 2026, the Waialua's girls surfing team captured the inaugural HHSAA Surfing State Championship, making the Bulldogs one of Hawai'i's first-ever state surfing champions.



The school is also home to FIRST Robotics Competition Team 359, "The Hawaiian Kids," founded in 1998 as Hawai'i's first FIRST Robotics team

Recently, Team 359 earned the FIRST Hawaii Regional Impact Award, recognizing its outstanding community outreach and STEM leadership



MOKULEIA

- § Mokuleia is a rural coastal community on the northwest shore of O‘ahu, just west of Waialua. Its name is commonly translated as *“isle of abundance”* reflecting the area's fertile coastal plains and rich natural resources
- § Today, Mokuleia remains one of Oahu's less-developed coastal communities. It is known for its beaches, surfing, skydiving and glider operations at Kawaihapai Airfield, horseback riding, and access to Ka‘ena Point, the westernmost tip of Oahu. The area has retained much of its rural character compared with more urbanized parts of the island

KAWAIHAPAI AIRFIELD

(formerly known as DILLINGHAM AIRFIELD)

1922

The site began as **Camp Kawaihapai**, a U.S. Army communications and coastal defense installation on O‘ahu’s North Shore

1941-
1945

After the attack on Pearl Harbor, the Army expanded **Mokuleia Airstrip** into a major military airfield. Its 9,000-foot runway supported large bomber operations

1948

The facility was later named **Dillingham Air Force Base** in honor of Captain Henry Gaylord Dillingham

1962

Civilian aviation began when the State of Hawai‘i leased the airfield from the military. It became a general aviation airport for flight training, gliding, and recreational flying

2001

The Hawai‘i Legislature later passed a law naming the airport **Kawaihapai Airfield** after its transfer from Army control

Dillingham/Kawaihapai is one of the few surviving North Shore military airfields associated with the defense of Oahu during World War II. It transitioned from a wartime fighter and bomber base into a civilian aviation center and remains a key location for glider operations, skydiving, and flight training in Hawai‘i.



DILLINGHAM RANCH

- § Dillingham Ranch covers about 2,700 acres, extending from the shoreline near Kaiahulu Beach to the foothills of the Waianae Mountains
- § Established in 1897 by Benjamin Franklin Dillingham, one of Hawai'i's most influential entrepreneurs, Dillingham Ranch has preserved more than 125 years of ranching heritage and history
- § The estate is renowned for its expansive grounds featuring oceanfront landscapes, mountain views, equestrian facilities, and polo grounds
- § Home to the world's only beachfront polo field, Dillingham Ranch has hosted polo matches for decades, including visits from notable players such as King Charles III and General George S. Patton



Dillingham Ranch



Dillingham Lodge



Hawaii Polo Club

KAENA POINT

- § Kaena Point is the westernmost tip of the island of Oahu. In Hawaiian, Kaena means "*the heat*"
- § Ancient Hawaiians believed Kaena Point was the place where the spirits of the deceased would leap into the afterlife to join their ancestors. It remains one of the most sacred sites in Hawaiian culture
- § Ka'ena Point is one of the few places on Oahu where you can regularly see endangered Hawaiian monk seal resting on the beach, turtles feeding on the shoreline, and nesting seabirds like the Laysan albatross
- § In the late 1800s, the Oahu Railway and Land Company built tracks around Kaena Point to transport sugar cane and passengers. Most of the tracks were destroyed by a tsunami in 1946. Parts of the track are visible along the Kaena Point Trail



Railway tracks at Kaena Point



Monk Seal resting at Mokuleia Beach

WAIALUA-MOKULEIA-KAENA POINT ATTRACTIONS



Waialua Sugar Mill



Mokuleia Beach



Camp Mokuleia



YMCA Camp Erdman



Hawaii Polo



Dillingham Airfield



Kaena Point State Park



Kealia Trail

North Shore Condo Developments



North Shore Condo Developments

1960s



Mokuleia Beach Colony

Ka'ena Point State Park

Kawela Bay

Kahuku

Laie

Hauula

Punaluu

Kaaawa

Pupukea

Pūpūkea-Paumalu
Forest Reserve

Hau'ula Forest
Reserve

Ahupua'a
'O Kahana
State Park

Hale'iwa
Beach Park

Hale'iwa

Mokuleia

Waialua

La'i Peace Center

Dole Plantation

Helemano

'Ewa Forest
Reserve

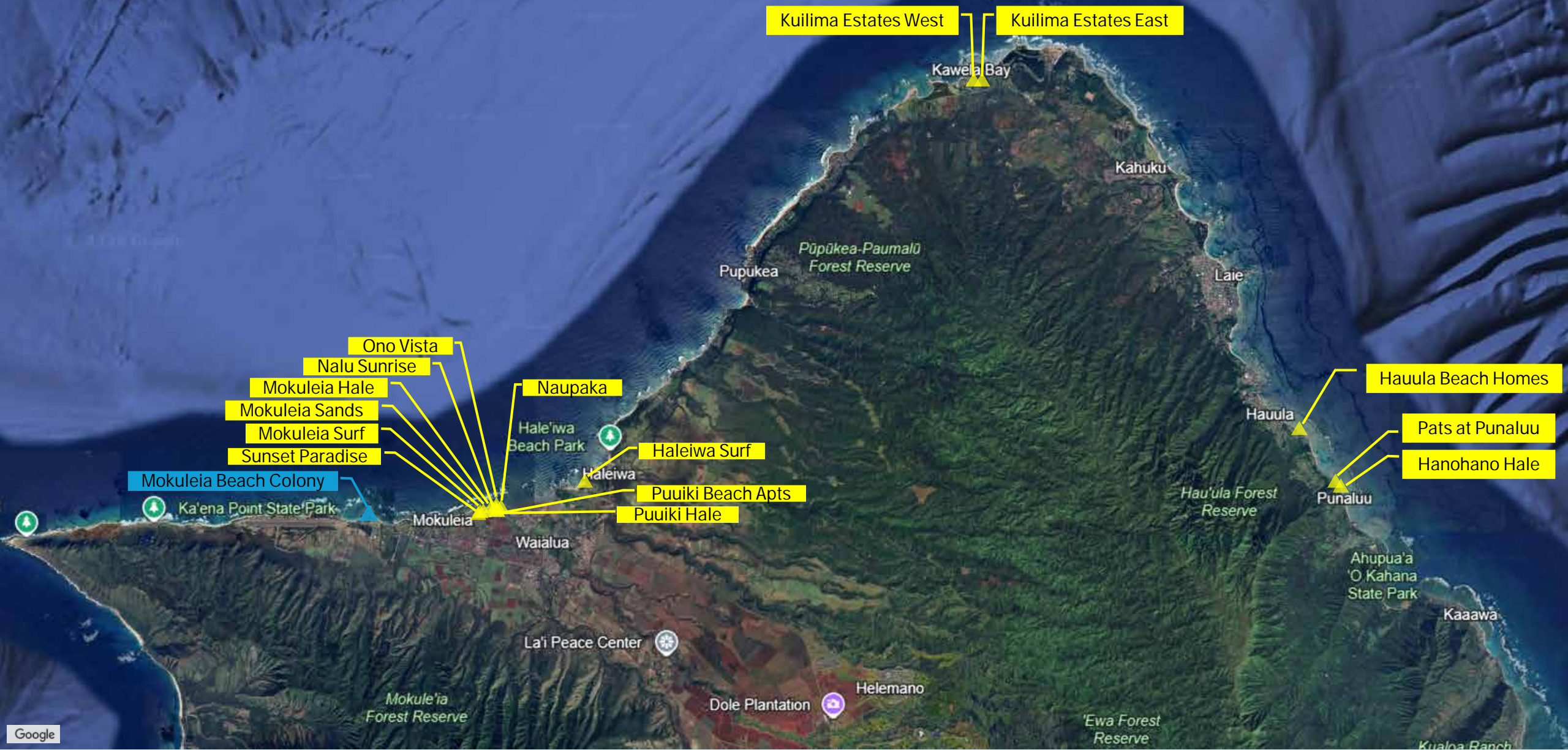
Mokule'ia
Forest Reserve

Kualoa Ranch

North Shore Condo Developments

1960s

1970s



Kuillima Estates West

Kuillima Estates East

Kawela Bay

Kahuku

Pupukea

Pūpūkea-Paumalū
Forest Reserve

Laie

Ono Vista

Nalu Sunrise

Mokuleia Hale

Mokuleia Sands

Mokuleia Surf

Sunset Paradise

Mokuleia Beach Colony

Ka'ena Point State Park

Mokuleia

Waialua

La'i Peace Center

Mokuleia
Forest Reserve

Dole Plantation

Helemano

Ewa Forest
Reserve

Haleiwa Beach Park

Haleiwa

Naupaka

Haleiwa Surf

Puuiki Beach Apts

Puuiki Hale

Hauula

Hau'ula Forest
Reserve

Punaluu

Ahupua'a
'O Kahana
State Park

Kaaawa

Hauula Beach Homes

Pats at Punaluu

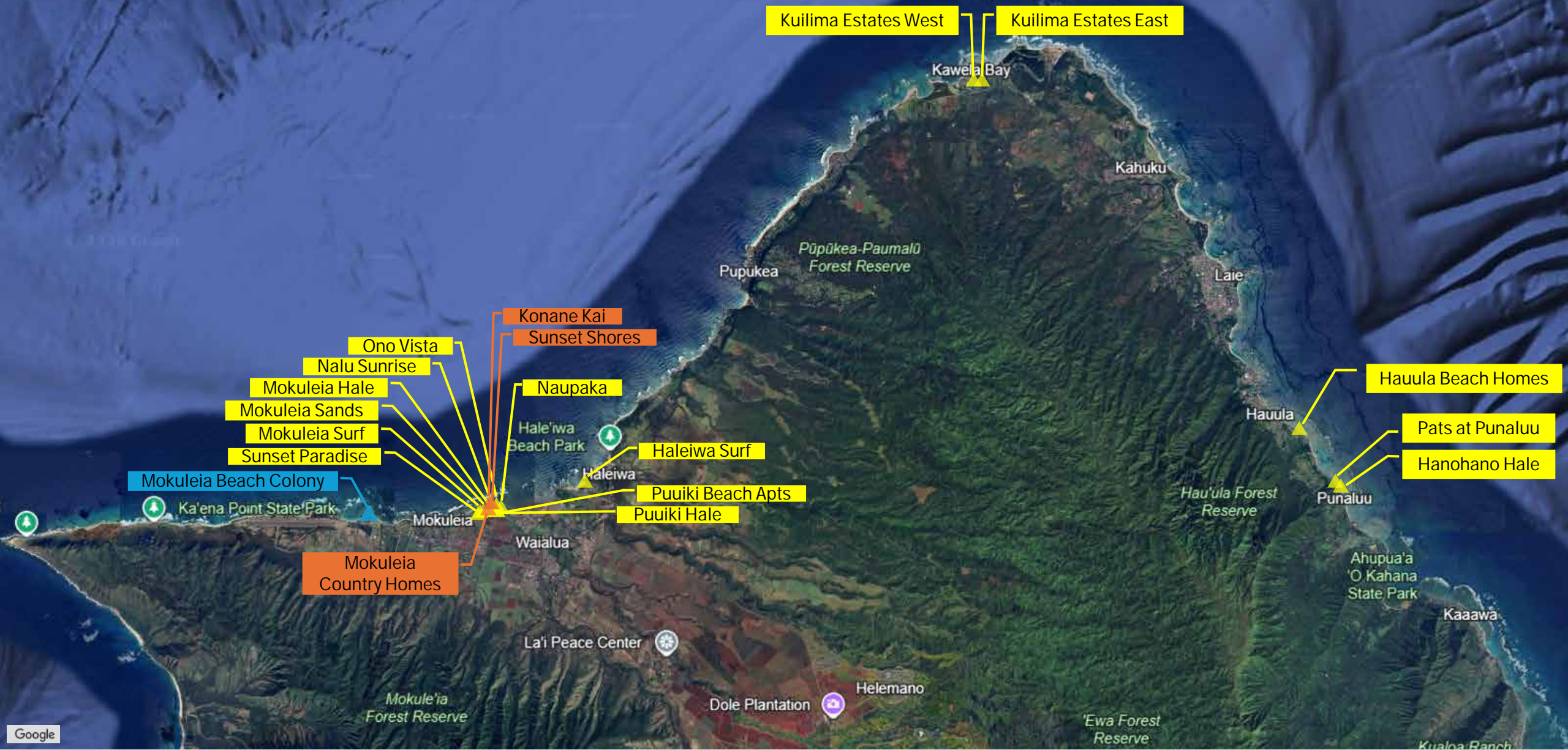
Hanohano Hale

North Shore Condo Developments

1960s

1970s

1980s



Kuilima Estates West

Kuilima Estates East

Kawela Bay

Kahuku

Pupukea

Pūpūkea-Paumalū Forest Reserve

Laie

Konane Kai

Sunset Shores

Ono Vista

Nalu Sunrise

Mokuleia Hale

Mokuleia Sands

Mokuleia Surf

Sunset Paradise

Mokuleia Beach Colony

Ka'ena Point State Park

Mokuleia

Naupaka

Haleiwa Beach Park

Haleiwa

Haleiwa Surf

Puuiki Beach Apts

Puuiki Hale

Waialua

Mokuleia Country Homes

La'i Peace Center

Dole Plantation

Helemano

Hauula

Hau'ula Forest Reserve

Punaluu

Hauula Beach Homes

Pats at Punaluu

Hanohano Hale

Ahupua'a 'O Kahana State Park

Kaaawa

'Ewa Forest Reserve

Kualoa Ranch

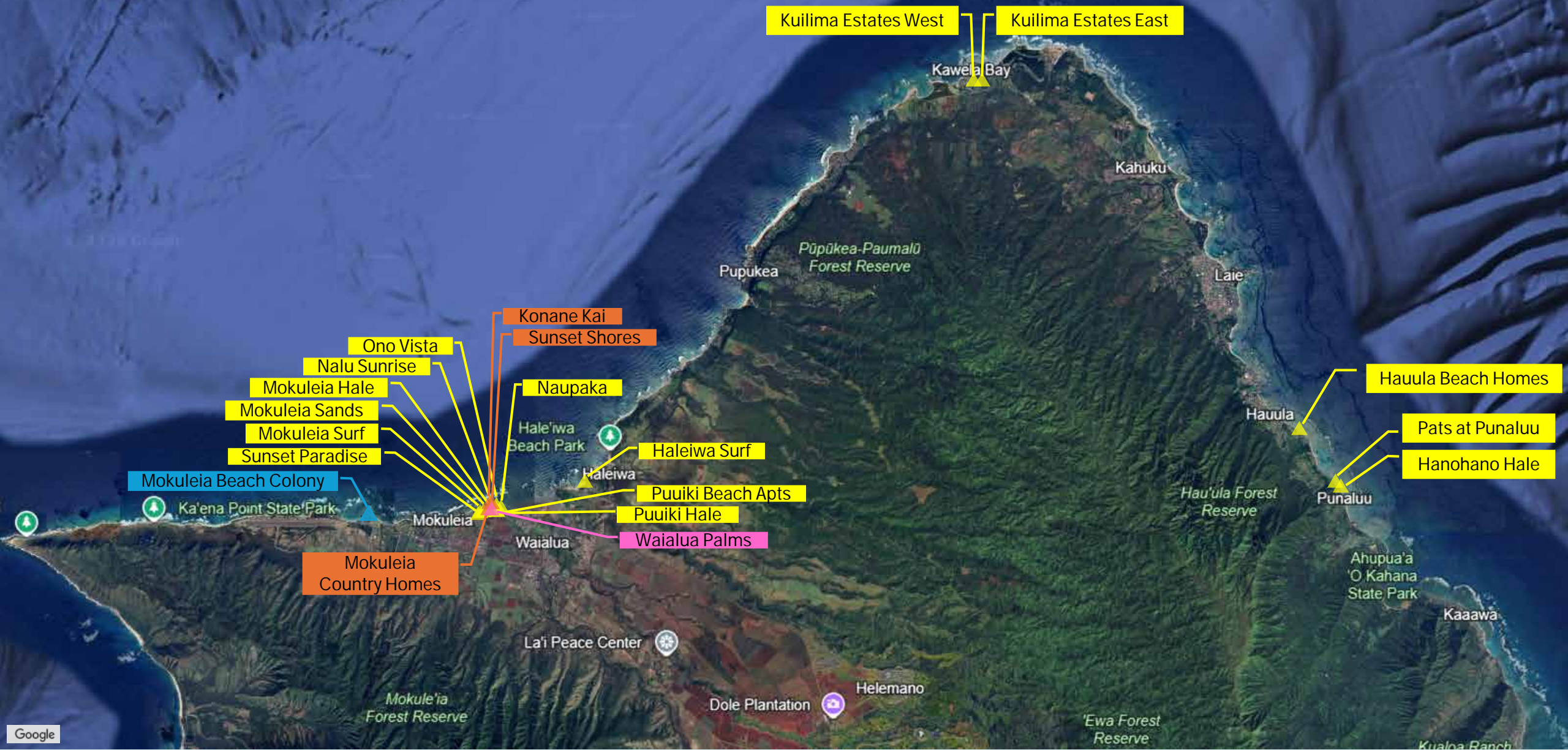
North Shore Condo Developments

1960s

1970s

1980s

1990s



Kuillima Estates West

Kuillima Estates East

Kawela Bay

Kahuku

Pupukea

Pūpūkea-Paumalū Forest Reserve

Laie

Konane Kai

Sunset Shores

Ono Vista

Nalu Sunrise

Mokuleia Hale

Mokuleia Sands

Mokuleia Surf

Sunset Paradise

Mokuleia Beach Colony

Ka'ena Point State Park

Mokuleia

Naupaka

Haleiwa Beach Park

Haleiwa

Haleiwa Surf

Puuiki Beach Apts

Puuiki Hale

Waialua

Waialua Palms

Mokuleia Country Homes

La'i Peace Center

Helemano

Dole Plantation

Hauula Beach Homes

Pats at Punaluu

Hanohano Hale

Hauula

Punaluu

Hau'ula Forest Reserve

Ahupua'a 'O Kahana State Park

Kaaawa

Mokuleia Forest Reserve

'Ewa Forest Reserve

Kualoa Ranch

North Shore Condo Developments

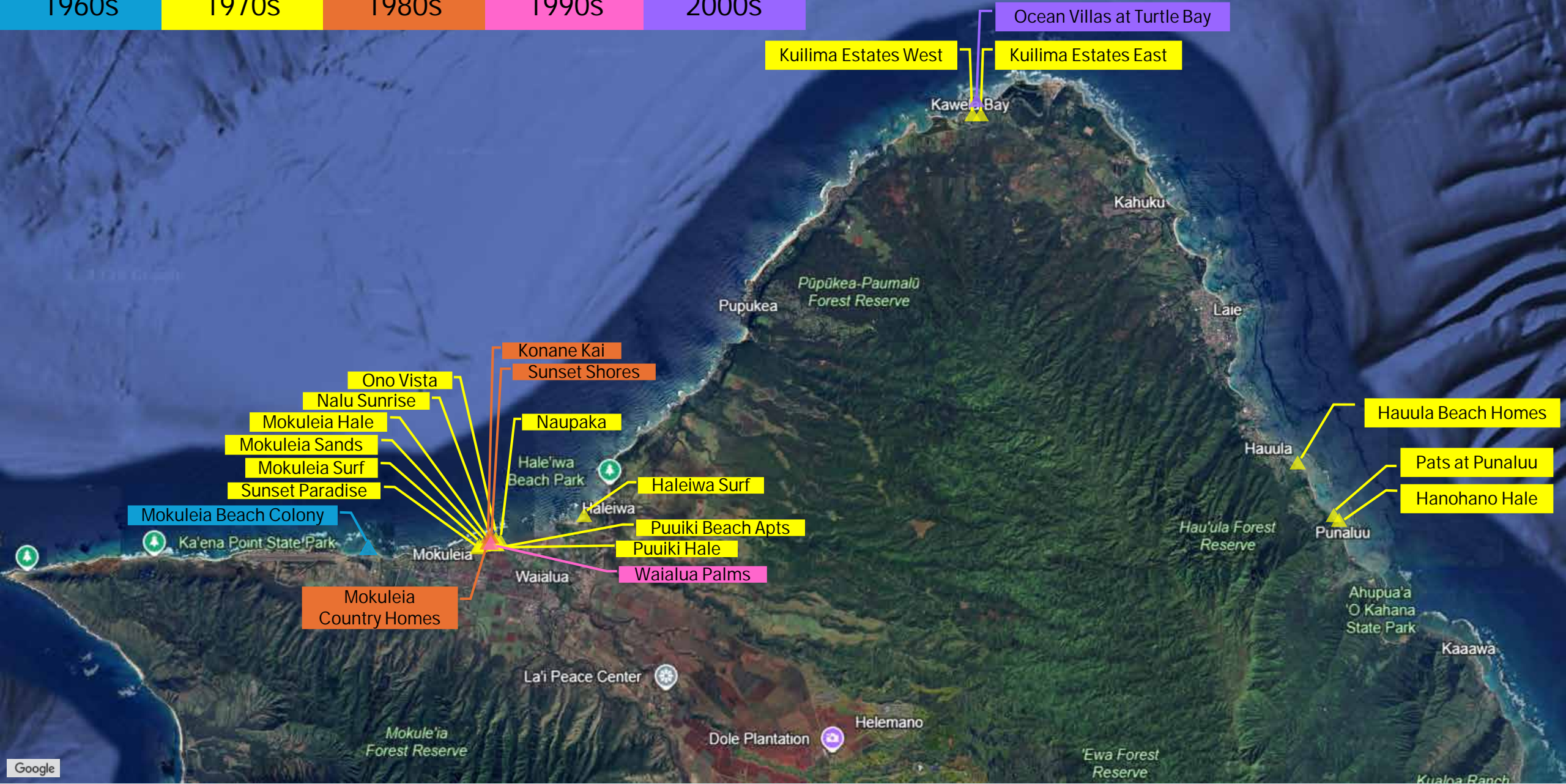
1960s

1970s

1980s

1990s

2000s



Ocean Villas at Turtle Bay

Kuillima Estates West

Kuillima Estates East

Hauula Beach Homes

Pats at Punaluu

Hanohano Hale

Konane Kai

Sunset Shores

Ono Vista

Nalu Sunrise

Mokuleia Hale

Mokuleia Sands

Mokuleia Surf

Sunset Paradise

Mokuleia Beach Colony

Naupaka

Haleiwa Surf

Puuiki Beach Apts

Puuiki Hale

Waialua Palms

Mokuleia Country Homes

North Shore Condo Developments

1960s

1970s

1980s

1990s

2000s

Planned

Ocean Villas at Turtle Bay

Kuillima Estates West

Kuillima Estates East

North Shore Club Residences

Kawela Bay

Kahuku

Pupukea

Pūpūkea-Paumalū Forest Reserve

Laie

Konane Kai

Sunset Shores

Ono Vista

Nalu Sunrise

Mokuleia Hale

Mokuleia Sands

Mokuleia Surf

Sunset Paradise

Mokuleia Beach Colony

Ka'ena Point State Park

Mokuleia

Naupaka

Hale'iwa Beach Park

Haleiwa

Haleiwa Surf

Puuiki Beach Apts

Puuiki Hale

Waialua

Waialua Palms

Mokuleia Country Homes

La'i Peace Center

Helemano

Dole Plantation

Hauula Beach Homes

Pats at Punaluu

Hanohano Hale

Hauula

Punaluu

Hau'ula Forest Reserve

Ahupua'a 'O Kahana State Park

Kaaawa

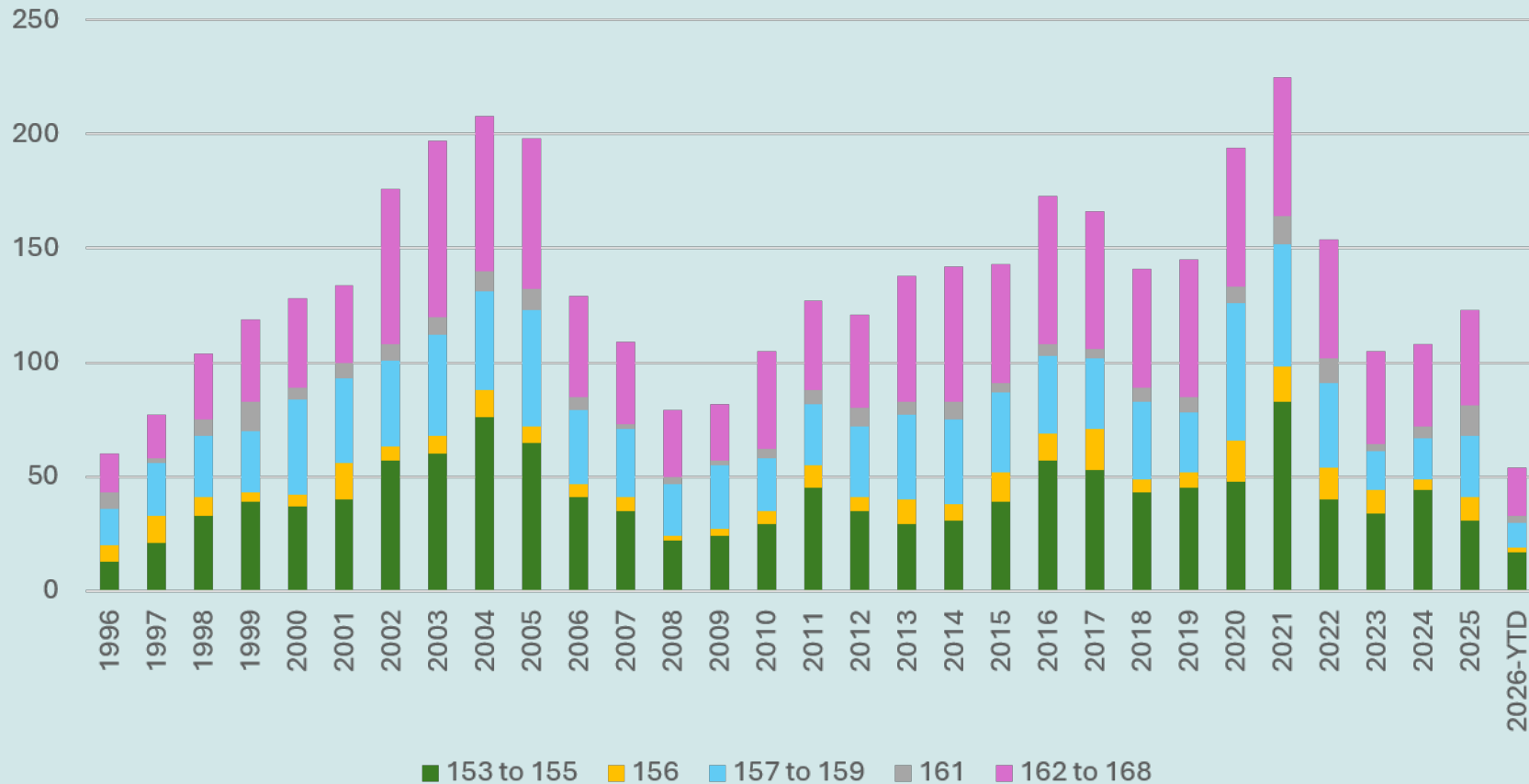
'Ewa Forest Reserve

Kualoa Ranch

MARKET STATS

Single-Family Homes

Sales by TMK Area

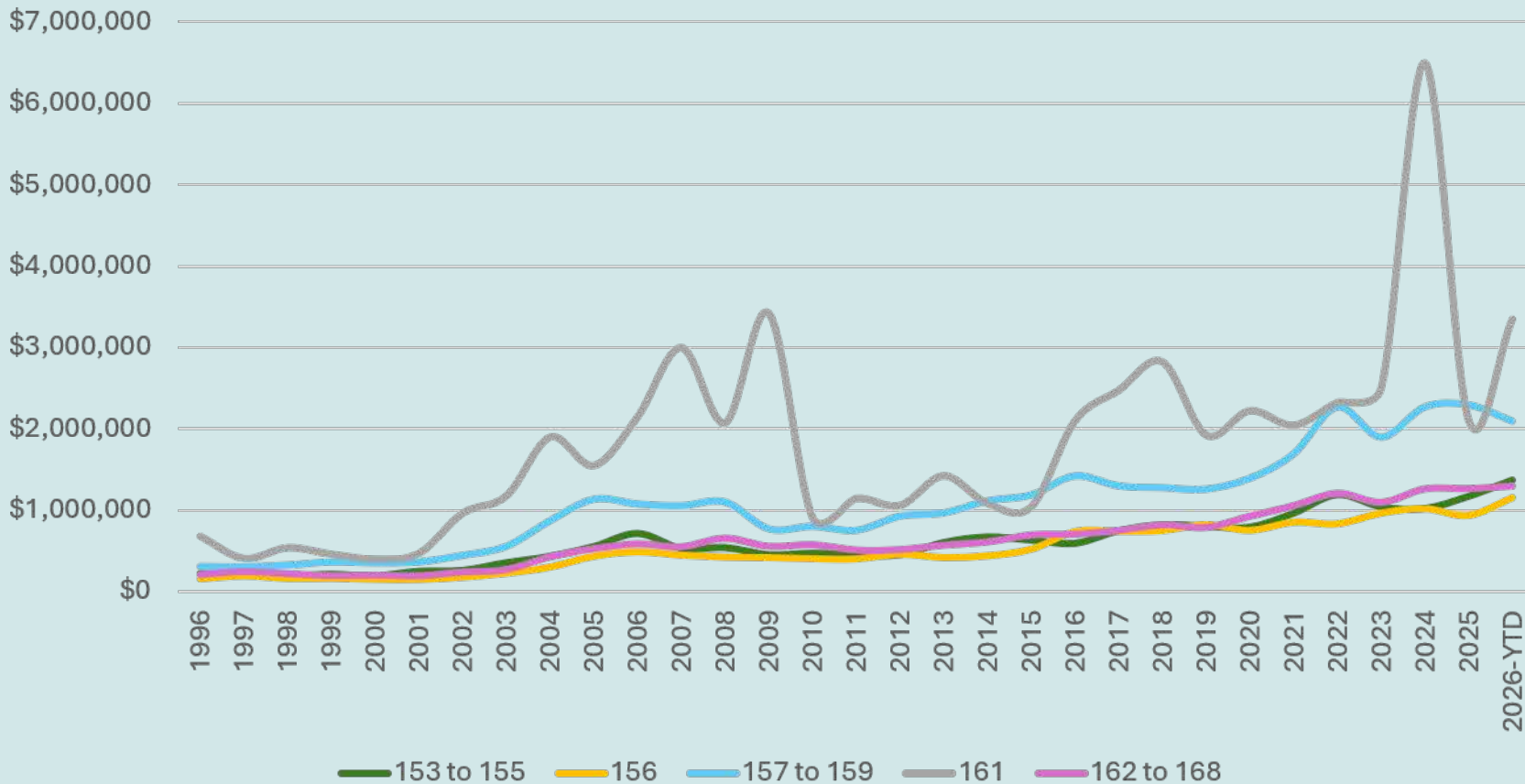


| MLS Neighborhoods in each TMK Area | |
|------------------------------------|--|
| 162 to 168 | Haleiwa, Metcalf Acres, Paalaakai, Waialua, Mokuleia |
| 161 | Waimea, Kawaiiloa-North Shore |
| 157 to 159 | Kawela Bay, Sunset/Velzy, Sunset Area, Pupukea |
| 156 | Malaekahana, Kahuku |
| 153 to 155 | Hauula, Punaluu, Laie |

MARKET STATS

Single-Family Homes

Annual Median Sales Price by TMK Area



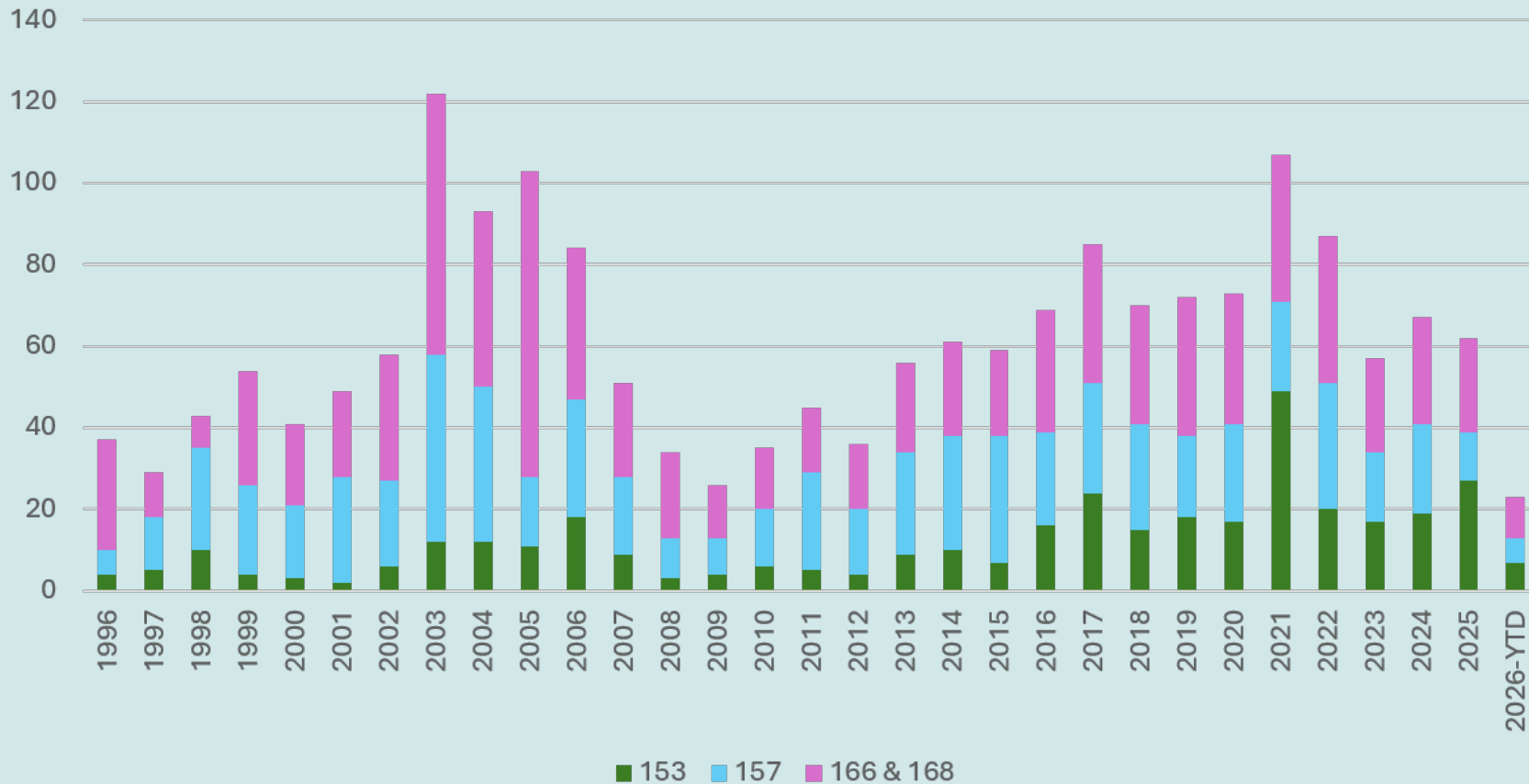
| MLS Neighborhoods in each TMK Area | |
|------------------------------------|--|
| 162 to 168 | Haleiwa, Metcalf Acres, Paalaakai, Waialua, Mokuleia |
| 161 | Waimea, Kawaiiloa-North Shore |
| 157 to 159 | Kawela Bay, Sunset/Velzy, Sunset Area, Pupukea |
| 156 | Malaekahana, Kahuku |
| 153 to 155 | Hauula, Punaluu, Laie |

Source: Honolulu Board of REALTORS®, MLS sales from Jan 1996 – May 2026. Information deemed reliable but not guaranteed.

MARKET STATS

Condos

Annual Sales by TMK Area

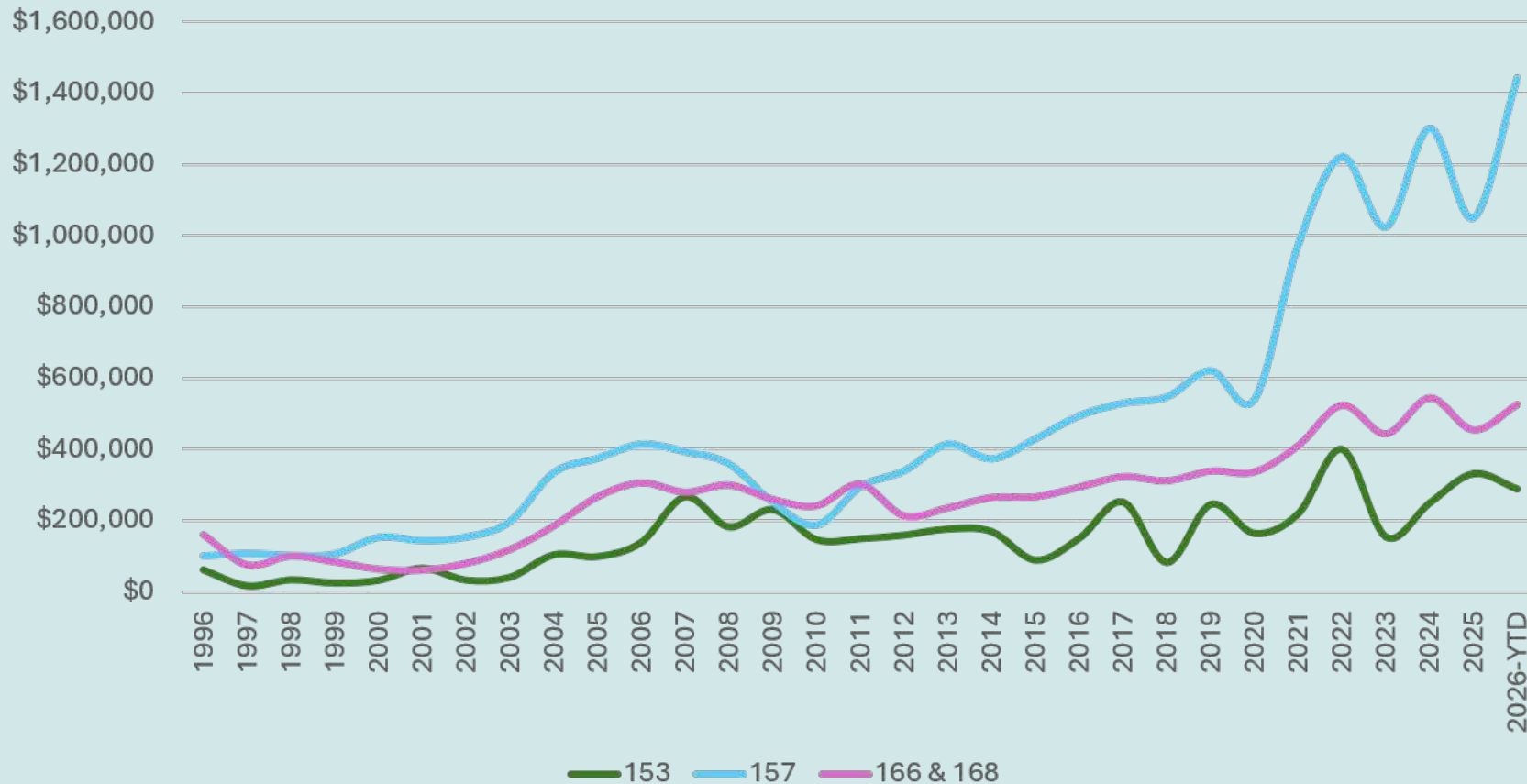


| MLS Neighborhoods in each TMK Area | |
|------------------------------------|--------------------------------|
| 166 & 168 | Beach Parks, Waialua, Mokuleia |
| 157 | Kuilima |
| 153 | Punaluu, Hauula |

MARKET STATS

Condos

Annual Median Sales Price by TMK Area



| MLS Neighborhoods in each TMK Area | |
|------------------------------------|--------------------------------|
| 166 & 168 | Beach Parks, Waialua, Mokuleia |
| 157 | Kuilima |
| 153 | Punaluu, Hauula |

TIPS – SELLING IN NORTH SHORE



Schools

- § Kahuku High School & Intermediate
- § Waialua Schools [2026 Championships; Surfing, Paddling, Robotics]



Recreation – Activities

- § Beaches, Surfing (Biggest/Best Waves on Oahu), Swimming, Diving, Kayak, Stand Up Paddling, Foil Surfing, Waveski, Canoe, Sportfishing
- § Activities: Hiking, Camping, Golf, Horseback Riding, Polo
- § Annual Events: Deep Sea Fishing, Art Festivals, North Shore Hanapaa Jackpot Fishing Tournament, North Shore Swim Series, Canoe Regattas
- § Farmlands and Plumeria Farm
- § Restaurants, Shrimp Farms, Food Trucks



Conservation Efforts

- § Shoreline
- § Cesspools (<https://seagrant.soest.hawaii.edu/app/>)
- § Seawalls

FLOOD ZONE

<https://www.resilientoahu.org/getfloodready>

Get Flood Ready

[Understand the Risk](#)

[Insure My Property](#)

[Stay Flood Safe](#)

[Prepare My Home](#)

[Build Responsibly](#)

[Mālama 'Āina](#)

[FloodSmart](#)

[Streamgages](#)

[Elevation Certificates](#)

[Keiki Corner](#)

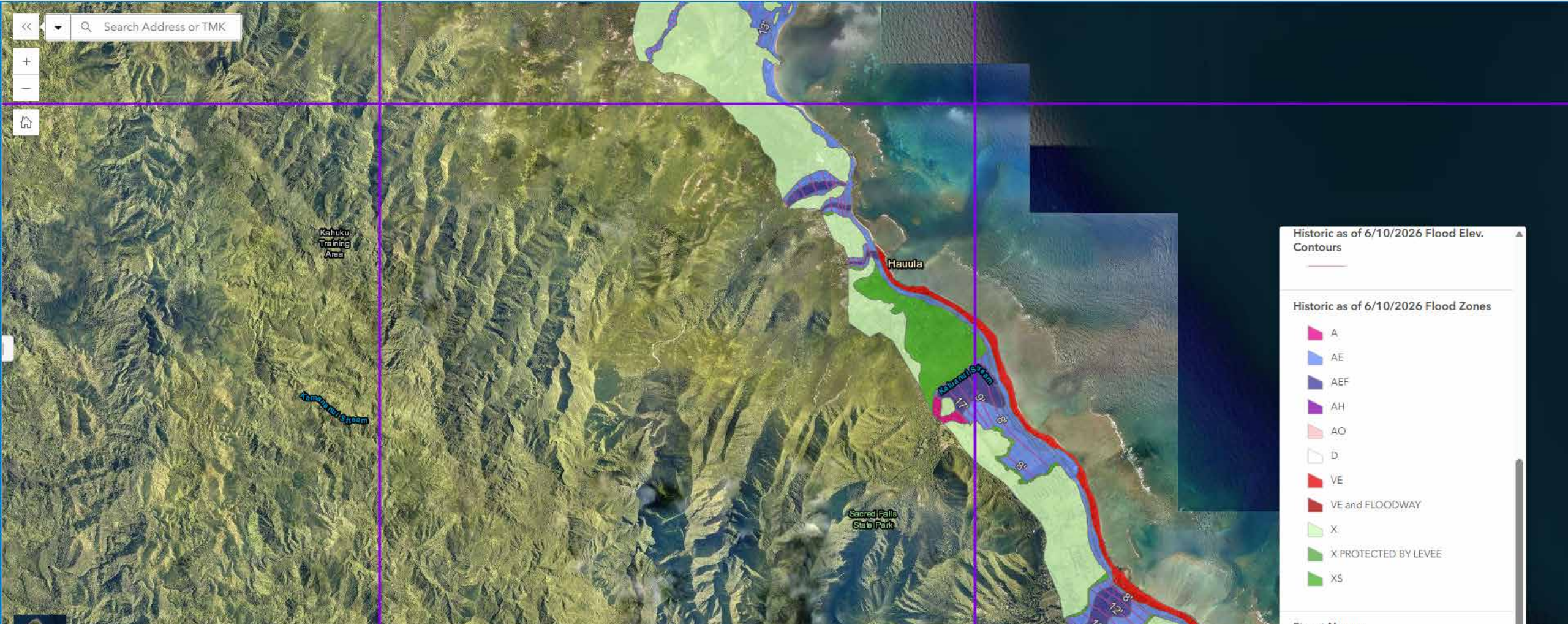
FEMA's new Flood Insurance Rate Maps now effective for O'ahu

FLOOD ZONE

(FEMA Flood Insurance Rate Maps)

HISTORIC

Punaluu to Hauula

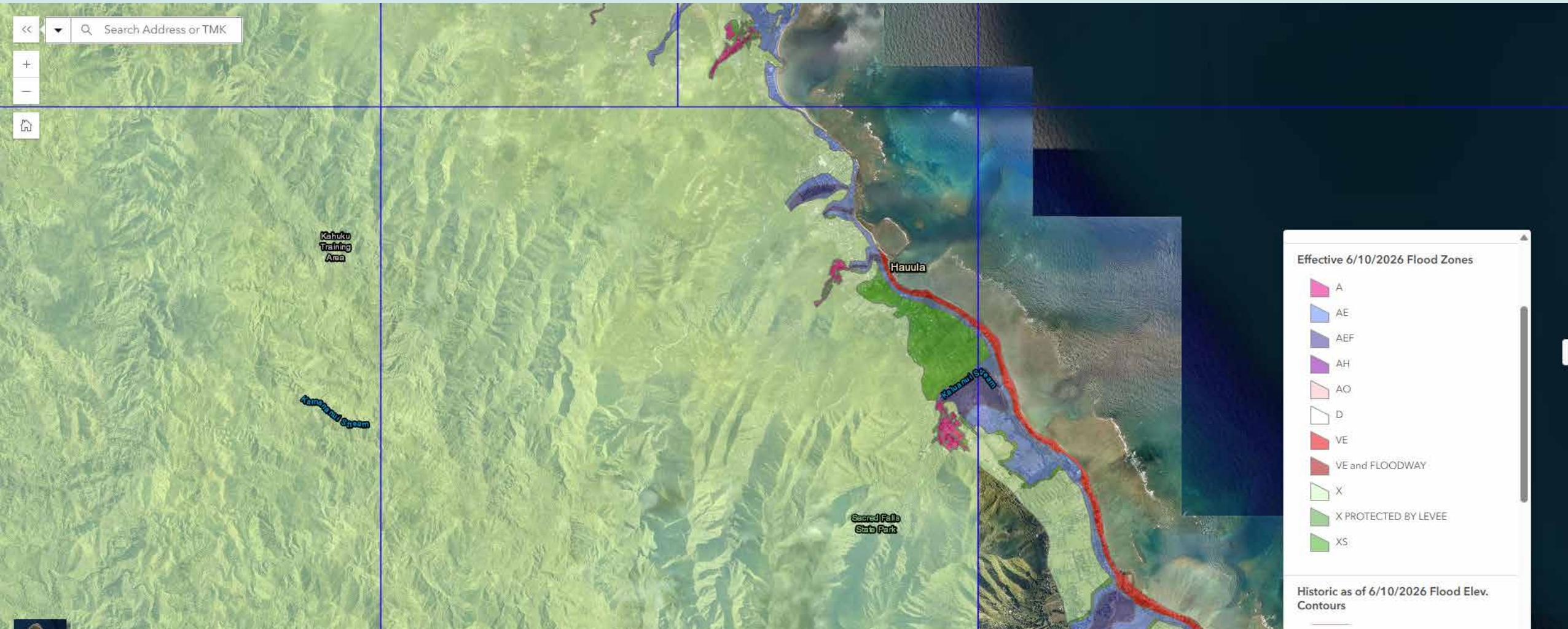


FLOOD ZONE

(FEMA Flood Insurance Rate Maps)

EFFECTIVE JUNE 10, 2026

Punaluu to Hauula

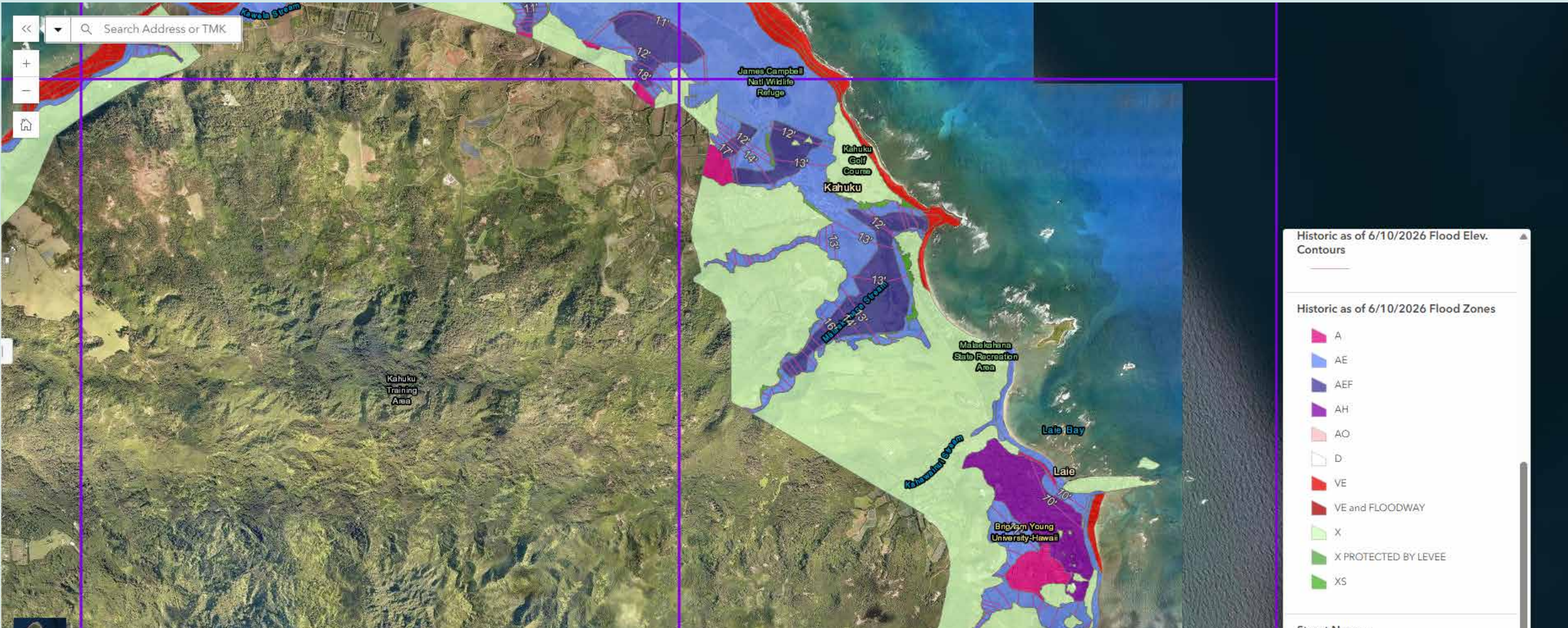


FLOOD ZONE

(FEMA Flood Insurance Rate Maps)

HISTORIC

Laie to Kahuku

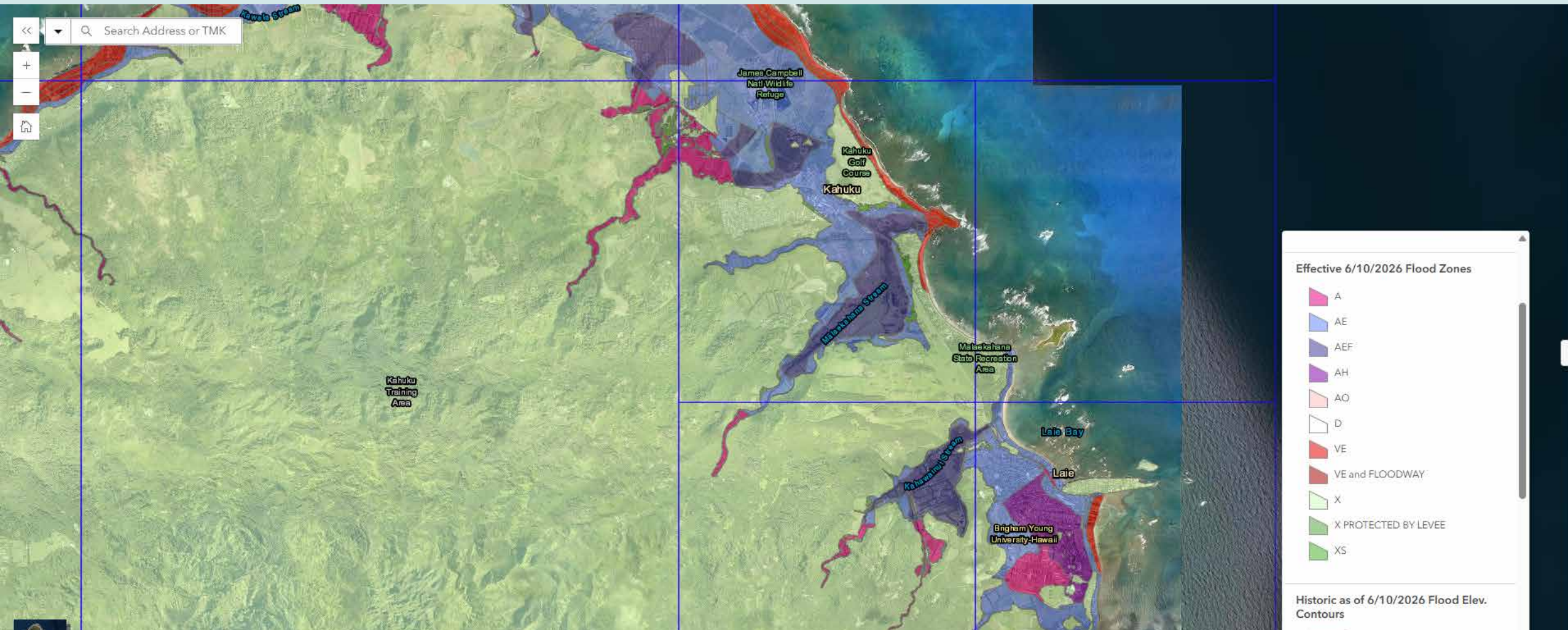


FLOOD ZONE

(FEMA Flood Insurance Rate Maps)

EFFECTIVE JUNE 10, 2026

Laie to Kahuku

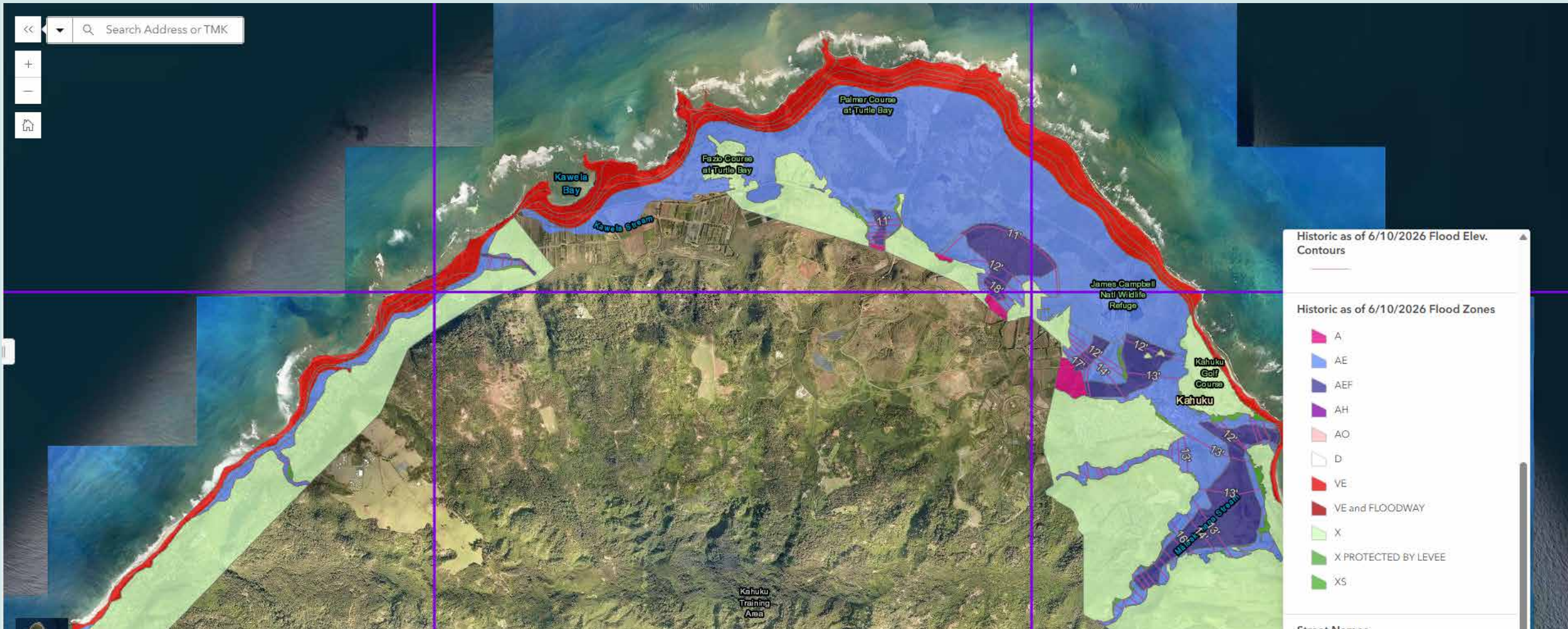


FLOOD ZONE

(FEMA Flood Insurance Rate Maps)

HISTORIC

Kahuku to Sunset Area

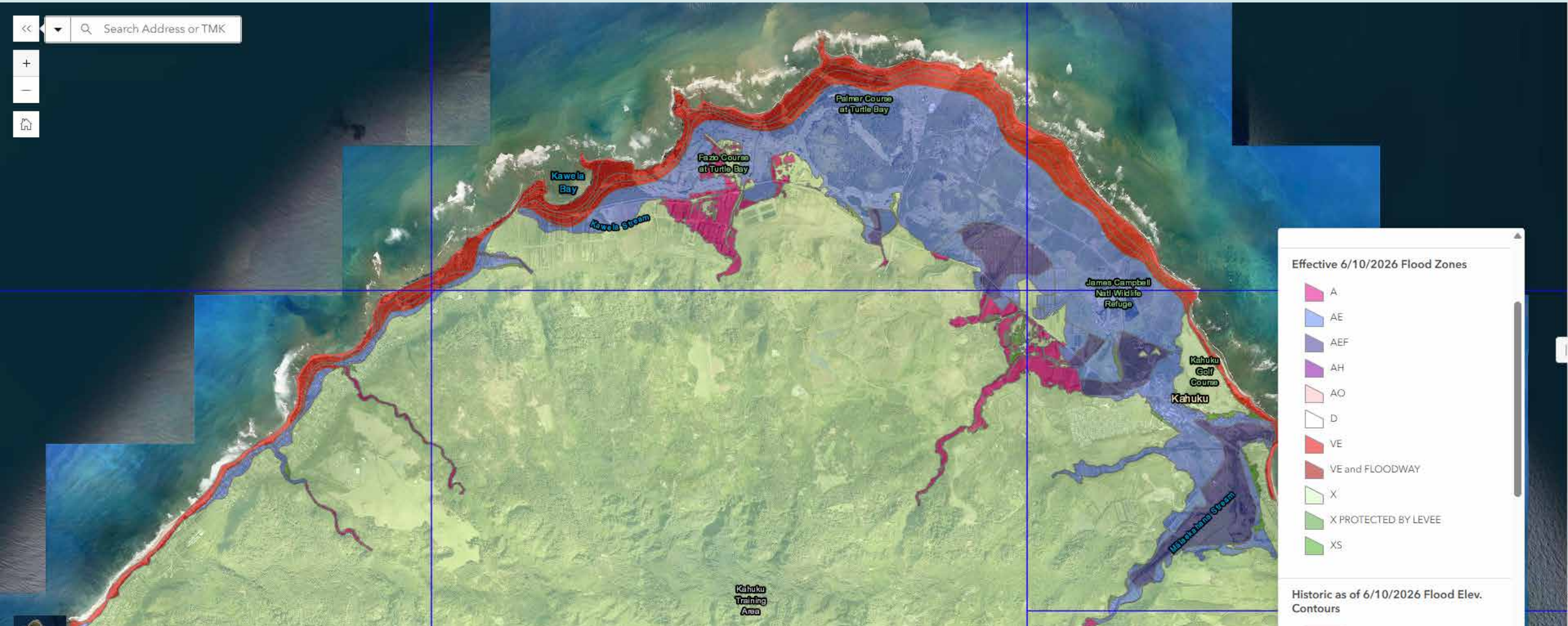


FLOOD ZONE

(FEMA Flood Insurance Rate Maps)

EFFECTIVE JUNE 10, 2026

Kahuku to Sunset Area



Effective 6/10/2026 Flood Zones

- A
- AE
- AEF
- AH
- AO
- D
- VE
- VE and FLOODWAY
- X
- X PROTECTED BY LEVEE
- XS

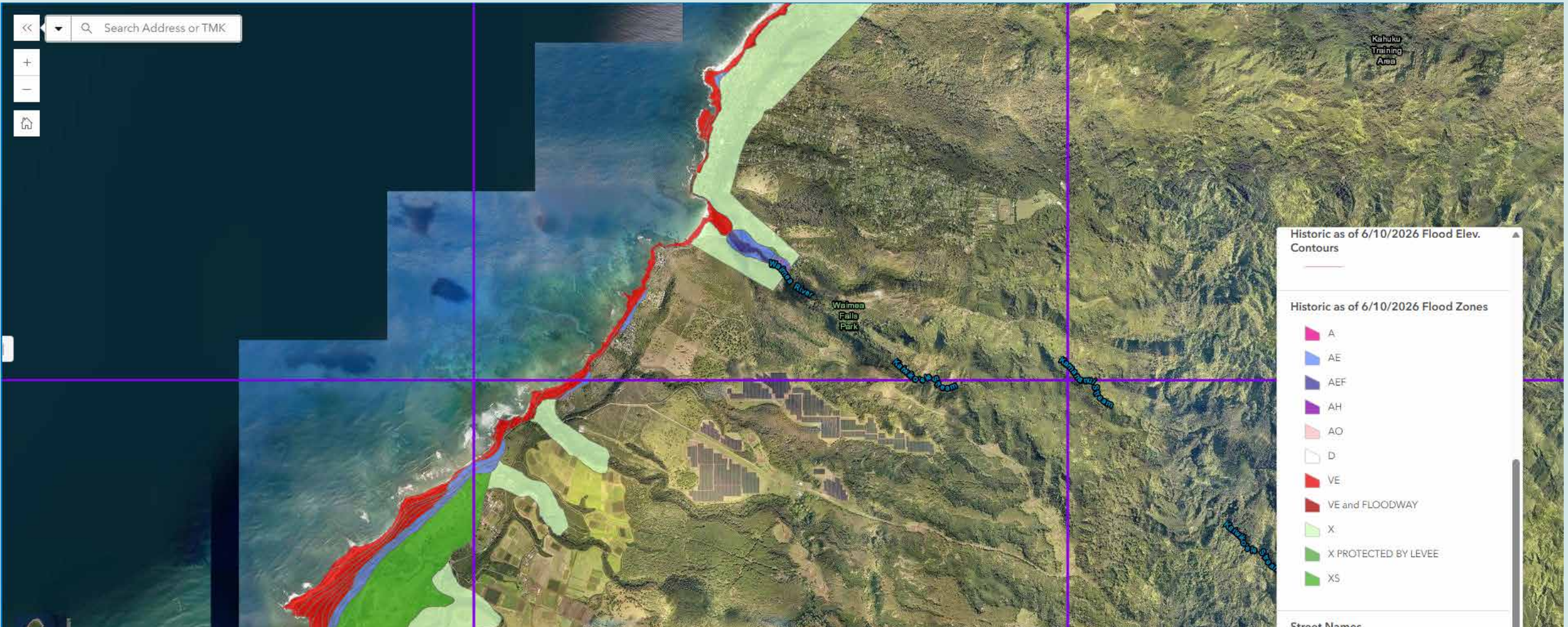
Historic as of 6/10/2026 Flood Elev. Contours

FLOOD ZONE

(FEMA Flood Insurance Rate Maps)

HISTORIC

Pupukea to Kawaiiloa

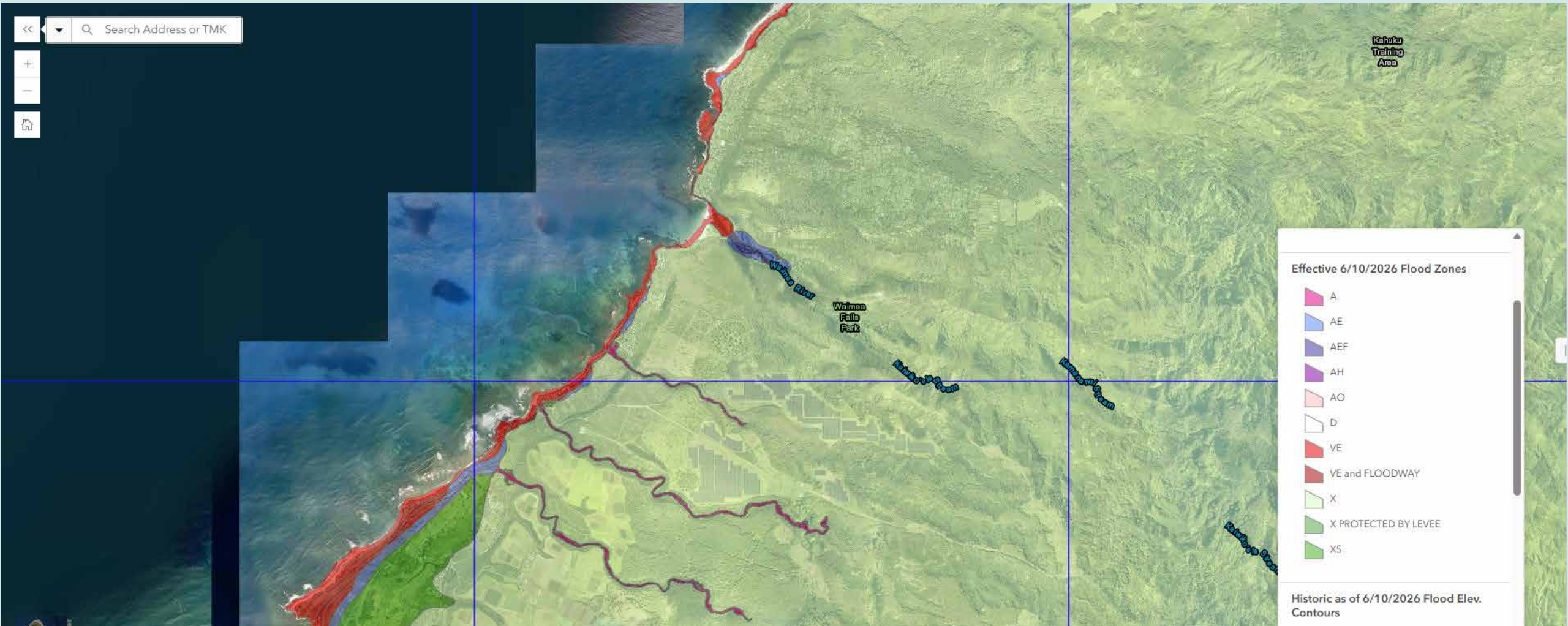


FLOOD ZONE

(FEMA Flood Insurance Rate Maps)

EFFECTIVE JUNE 10, 2026

Pupukea to Kawaiiloa

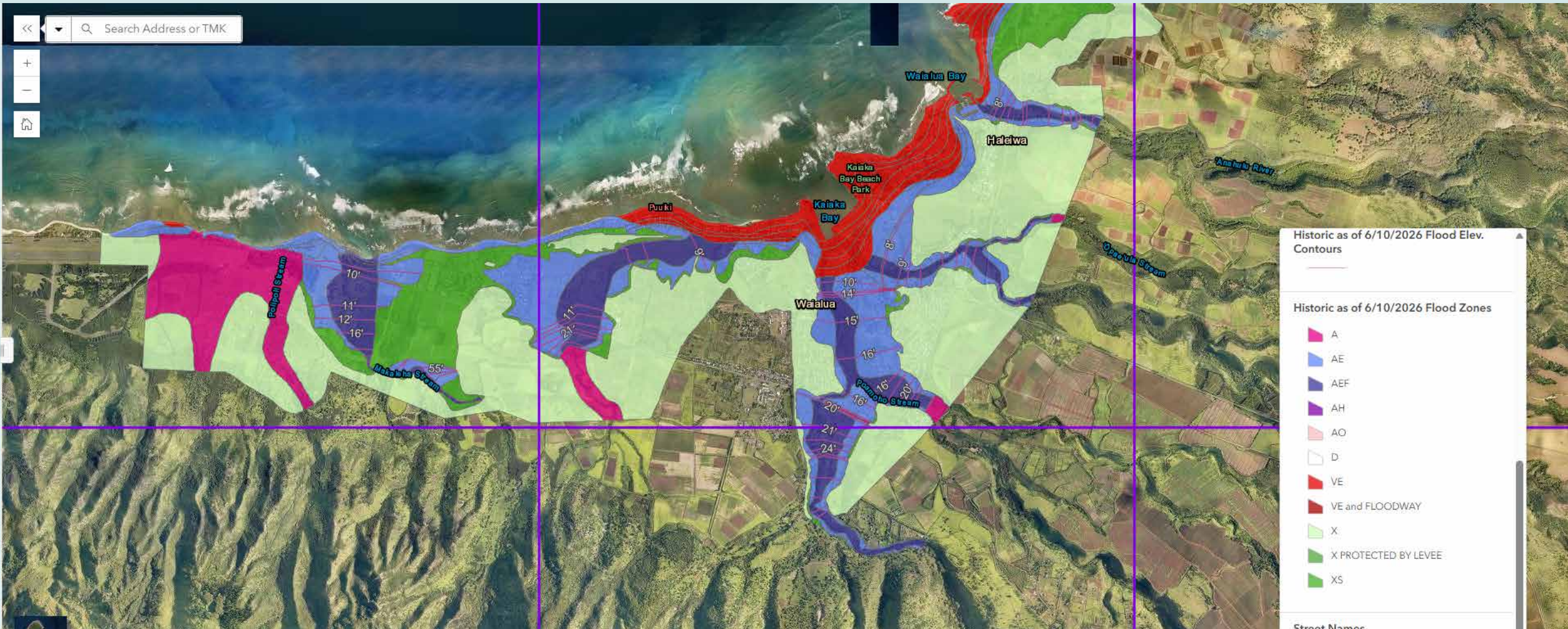


FLOOD ZONE

(FEMA Flood Insurance Rate Maps)

HISTORIC

Haleiwa to Mokuleia

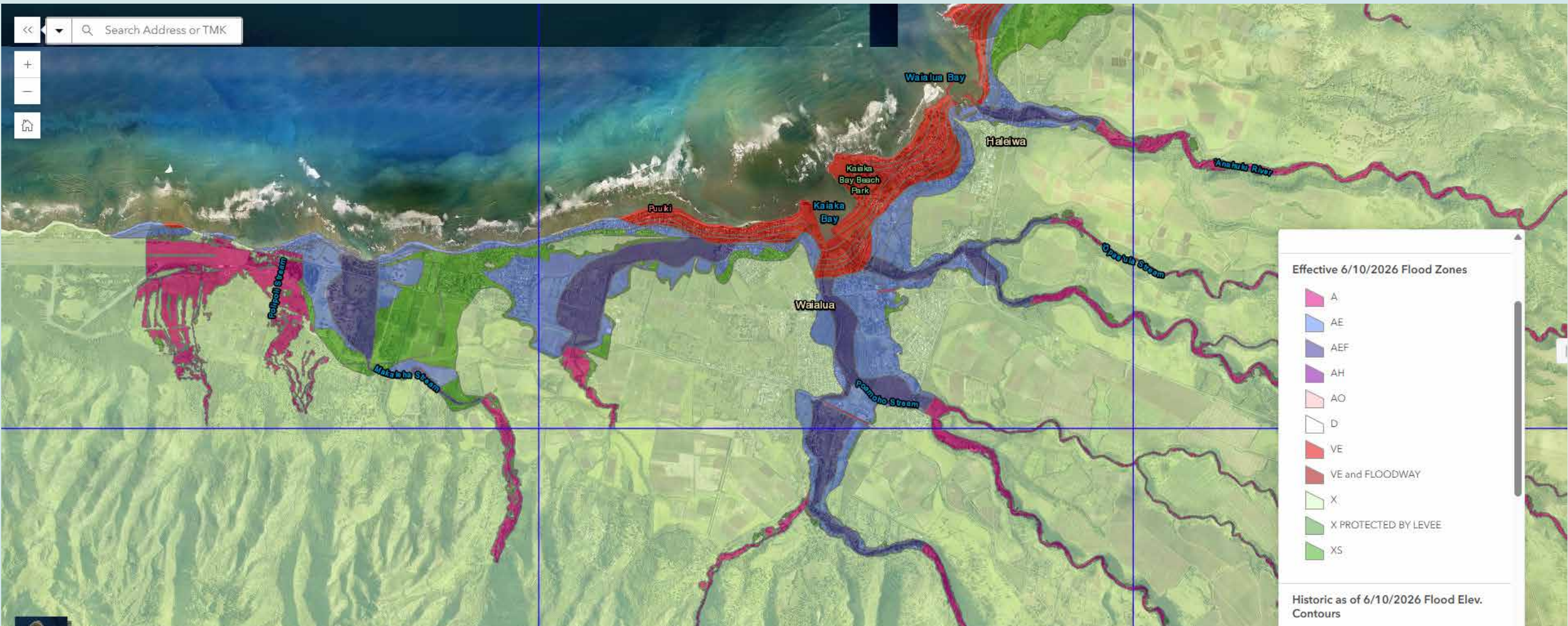


FLOOD ZONE

(FEMA Flood Insurance Rate Maps)

EFFECTIVE JUNE 10, 2026

Haleiwa to Mokuleia



KONA LOW STORMS RELIEF EFFORT

Ways to Help

KONA LOW STORM 2026



APPLY FOR HOUSING-RELATED
RELIEF GRANTS

Hawai'i homeowners and renters impacted by the Kona Low storms may apply for up to \$1,000 in relief assistance through July 1, 2026.*



**Applications are first come, first served*

SCAN TO DOWNLOAD APPLICATION



Donate, Volunteer, or Share information with those in need or who want to help. See resources at: members.hicentral.com/kokua-oahu



Report damage: Reach out to people you know in the flood areas (clients, agents, friends, and family) to check whether their property was damaged and have them report it to the City right away via an online form at: www.honolulu.gov/homedamage



Help us replenish our fund to make a greater impact. HBR's Board of Directors approved deployment of funds from our **REALTORS® Care Fund** to support relief efforts of six local nonprofits.

Members may contribute directly to HBR's fund through [Hawaii Community Foundation](#) -- be sure to select REALTORS Care Fund from the drop-down box.

KONA LOW STORMS RELIEF EFFORT



Visit our webpage for links to donate and volunteer, and the latest updates:
members.hicentral.com/kokua-oahu





MAHALO

NORTH SHORE PANELISTS

Joni Shiraishi, Aloha Island Homes

Erica Lehmkuhl, Seaside Realty

Peter Chessen, Coldwell Banker Realty

SPECIAL THANK YOU

Devin Minardi, Coldwell Banker Realty

Linda Okita, Pineapple Mortgage