

Oahu Monthly Housing Statistics

August 2019



SINGLE FAMILY HOMES

Median Sales Price	
\$790,000	-2.5%
Closed Sales	
360	+1.7%
Average Sales Price	
\$961,456	-3.7%

CONDOS

Median Sales Price	
\$419,500	-1.8%
Closed Sales	
512	-1.7%
Average Sales Price	
\$486,234	-3.5%

INDEX:

Monthly Indicators	2
Closed Sales	3
Median Sales Price	4
Median Days on Market	5
New Listings	6
Pending Sales	7
Months of Inventory	8
Active Listings	9
Average Sales Price	10
% of Original Listing Price Received	11
Active Continue to Show	12
Housing Supply Overview	13
Pending Sales (by price range)	14-15
Median Days on Market (by price range)	16-17
% of list price received (by price range)	18-19
Inventory of Homes (by price range)	20-21
Months Supply of Inventory (price range)	22-23
Historical Graphs	24-25
Price Graphs	26-27

Monthly Indicators August 2019

	Single Family Homes					
	Aug-19	Aug-18	%	YTD-19	YTD-18	%
Closed Sales	360	354	1.7%	2,427	2,444	-0.7%
Median Sales Price	\$790,000	\$810,000	-2.5%	\$785,000	\$785,000	0.0%
Median Days on Market	27	15	80.0%	22	16	37.5%
New Listings	484	456	6.1%	3,915	3,726	5.1%
Pending Sales	533	510	4.5%	3,612	3,786	-4.6%
Months of Inventory	3.6	2.8	28.6%	--	--	--
Active Listings	1,568	1,403	11.8%	--	--	--
Average Sales Price	\$961,456	\$998,268	-3.7%	\$941,054	\$982,148	-4.2%
% of Original Listing Price Received	98.0%	99.4%	-1.4%	98.1%	98.2%	-0.1%

	Condos					
	Aug-19	Aug-18	%	YTD-19	YTD-18	%
Closed Sales	512	521	-1.7%	3,608	3,856	-6.4%
Median Sales Price	\$419,500	\$427,000	-1.8%	\$425,000	\$425,000	0.0%
Median Days on Market	22	18	22.2%	26	18	44.4%
New Listings	753	644	16.9%	5,981	5,606	6.7%
Pending Sales	708	745	-5.0%	5,036	5,617	-10.3%
Months of Inventory	4.0	2.9	37.9%	--	--	--
Active Listings	2,443	2,071	18.0%	--	--	--
Average Sales Price	\$486,234	\$503,688	-3.5%	\$513,605	\$503,817	1.9%
% of Original Listing Price Received	98.1%	99.8%	-1.7%	97.9%	98.8%	-0.9%

SOURCE: Honolulu Board of REALTORS®, compiled from MLS data.

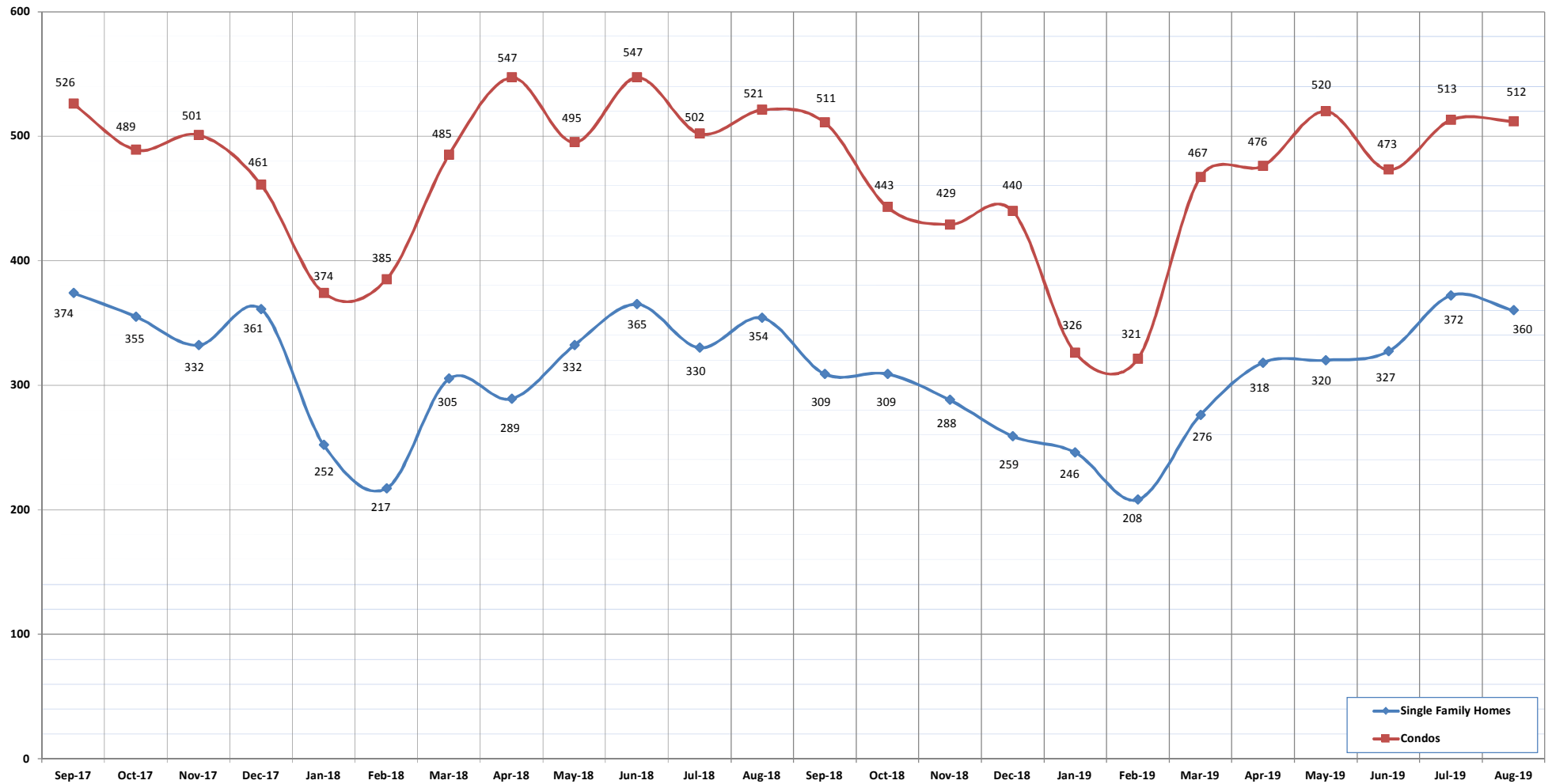
©Copyright 2019. Honolulu Board of REALTORS®. All Rights Reserved. Information herein deemed reliable but not guaranteed.

Closed Sales

August 2019

OAHU, HAWAII

(A count of all properties that have closed in a given month)



CLOSED SALES:	Sep-17	Oct-17	Nov-17	Dec-17	Jan-18	Feb-18	Mar-18	Apr-18	May-18	Jun-18	Jul-18	Aug-18	Sep-18	Oct-18	Nov-18	Dec-18	Jan-19	Feb-19	Mar-19	Apr-19	May-19	Jun-19	Jul-19	Aug-19
Single Family Homes	374	355	332	361	252	217	305	289	332	365	330	354	309	309	288	259	246	208	276	318	320	327	372	360
Condos	526	489	501	461	374	385	485	547	495	547	502	521	511	443	429	440	326	321	467	476	520	473	513	512
TOTAL	900	844	833	822	626	602	790	836	827	912	832	875	820	752	717	699	572	529	743	794	840	800	885	872

SOURCE: Honolulu Board of REALTORS®, compiled from MLS data.

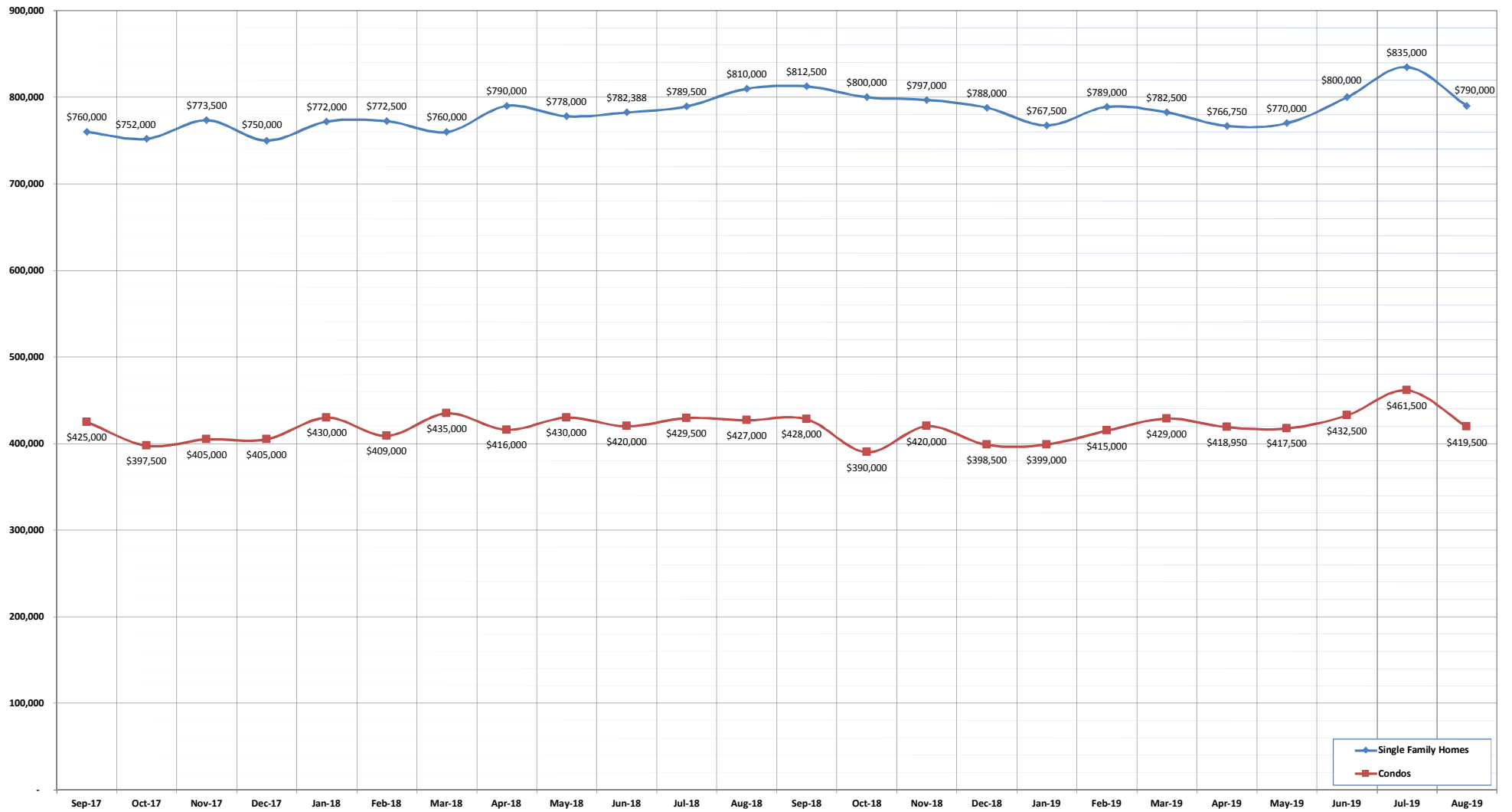
©Copyright 2019. Honolulu Board of REALTORS®, All Rights Reserved. Information herein deemed reliable but not guaranteed.

Median Sales Price

August 2019

OAHU, HAWAII

(The median sales price for all closed properties in a given month)



MEDIAN SALES PRICE:	Sep-17	Oct-17	Nov-17	Dec-17	Jan-18	Feb-18	Mar-18	Apr-18	May-18	Jun-18	Jul-18	Aug-18	Sep-18	Oct-18	Nov-18	Dec-18	Jan-19	Feb-19	Mar-19	Apr-19	May-19	Jun-19	Jul-19	Aug-19
Single Family Homes	760,000	752,000	773,500	750,000	772,000	772,500	760,000	790,000	778,000	782,388	789,500	810,000	812,500	800,000	797,000	788,000	767,500	789,000	782,500	766,750	770,000	800,000	835,000	790,000
Condos	425,000	397,500	405,000	405,000	430,000	409,000	435,000	416,000	430,000	420,000	429,500	427,000	428,000	390,000	420,000	398,500	399,000	415,000	429,000	418,950	417,500	432,500	461,500	419,500

SOURCE: Honolulu Board of REALTORS®, compiled from MLS data.

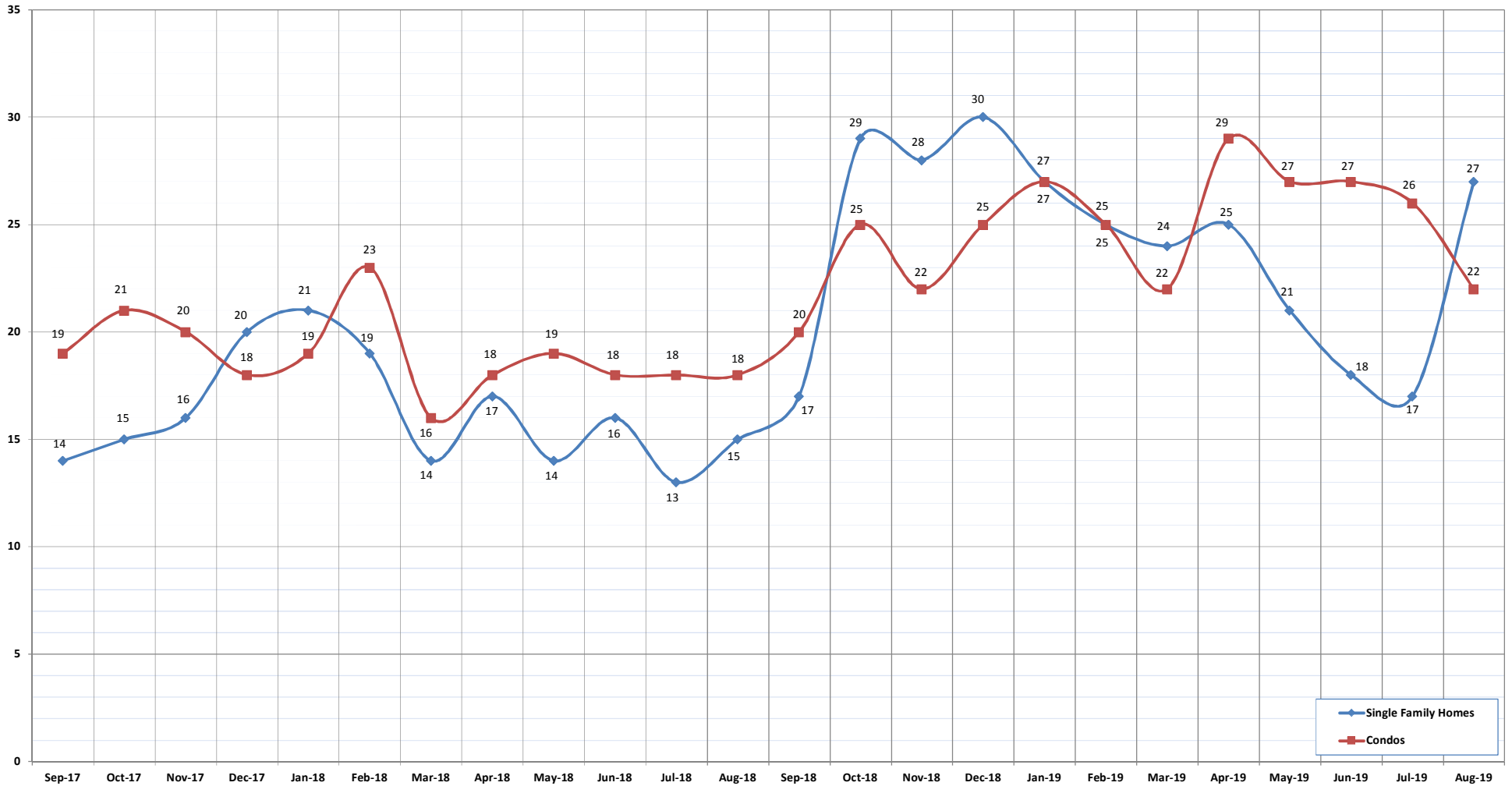
©Copyright 2019. Honolulu Board of REALTORS®. All Rights Reserved. Information herein deemed reliable but not guaranteed.

Median Days on Market

August 2019

OAHU, HAWAII

(The median number of days between when a property is first listed and when an offer is accepted)



MEDIAN DAYS ON MARKET:	Sep-17	Oct-17	Nov-17	Dec-17	Jan-18	Feb-18	Mar-18	Apr-18	May-18	Jun-18	Jul-18	Aug-18	Sep-18	Oct-18	Nov-18	Dec-18	Jan-19	Feb-19	Mar-19	Apr-19	May-19	Jun-19	Jul-19	Aug-19
Single Family Homes	14	15	16	20	21	19	14	17	14	16	13	15	17	29	28	30	27	25	24	25	21	18	17	27
Condos	19	21	20	18	19	23	16	18	19	18	18	18	20	25	22	25	27	25	22	29	27	27	26	22

SOURCE: Honolulu Board of REALTORS®, compiled from MLS data.

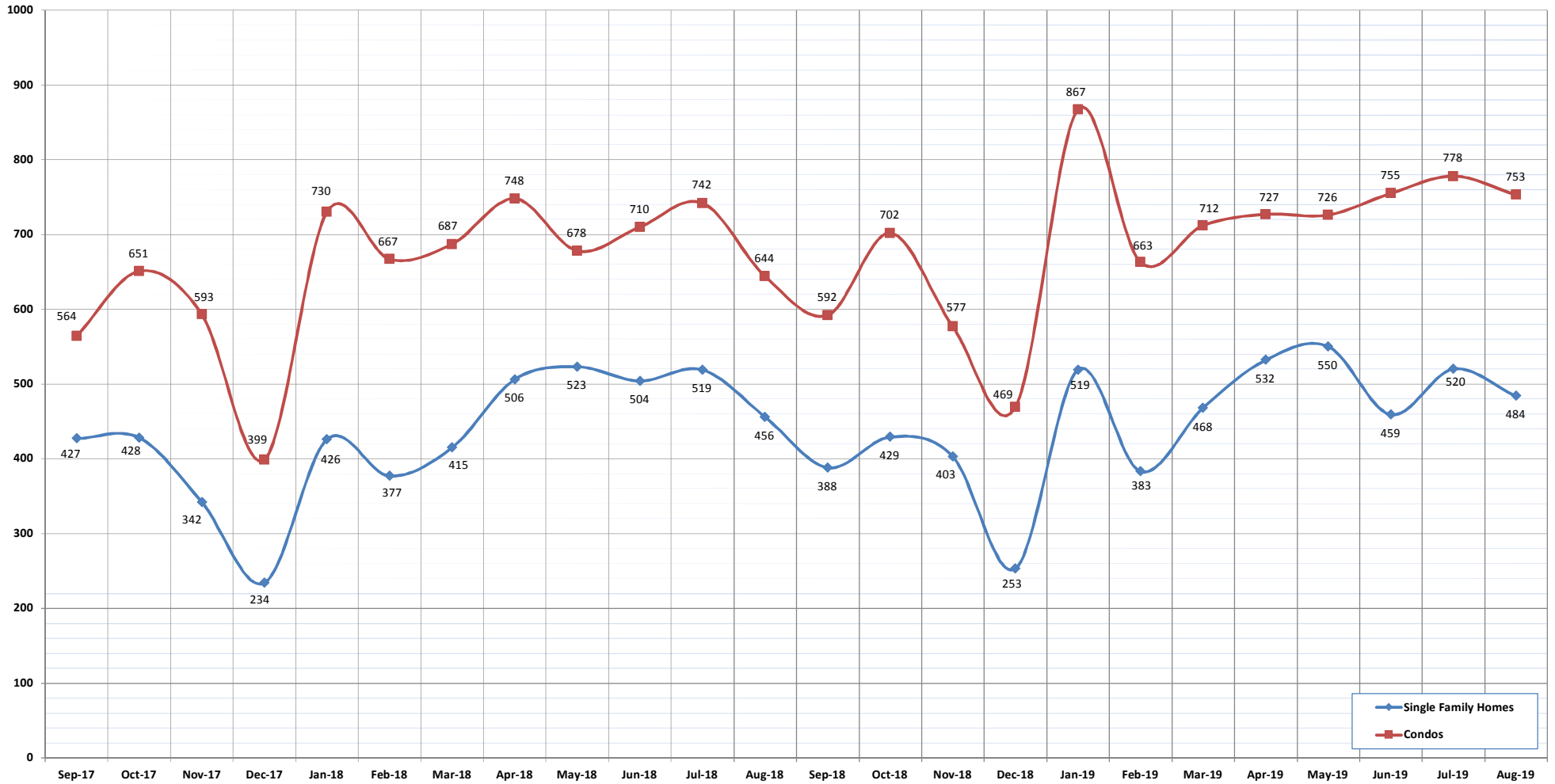
©Copyright 2019. Honolulu Board of REALTORS®. All Rights Reserved. Information herein deemed reliable but not guaranteed.

New Listings

August 2019

OAHU, HAWAII

(A count of the properties that have been newly listed on the market in a given month)



NEW LISTINGS:	Sep-17	Oct-17	Nov-17	Dec-17	Jan-18	Feb-18	Mar-18	Apr-18	May-18	Jun-18	Jul-18	Aug-18	Sep-18	Oct-18	Nov-18	Dec-18	Jan-19	Feb-19	Mar-19	Apr-19	May-19	Jun-19	Jul-19	Aug-19
Single Family Homes	427	428	342	234	426	377	415	506	523	504	519	456	388	429	403	253	519	383	468	532	550	459	520	484
Condos	564	651	593	399	730	667	687	748	678	710	742	644	592	702	577	469	867	663	712	727	726	755	778	753
TOTAL	991	1079	935	633	1156	1044	1102	1254	1201	1214	1261	1100	980	1131	980	722	1386	1046	1180	1259	1276	1214	1298	1237

SOURCE: Honolulu Board of REALTORS®, compiled from MLS data.

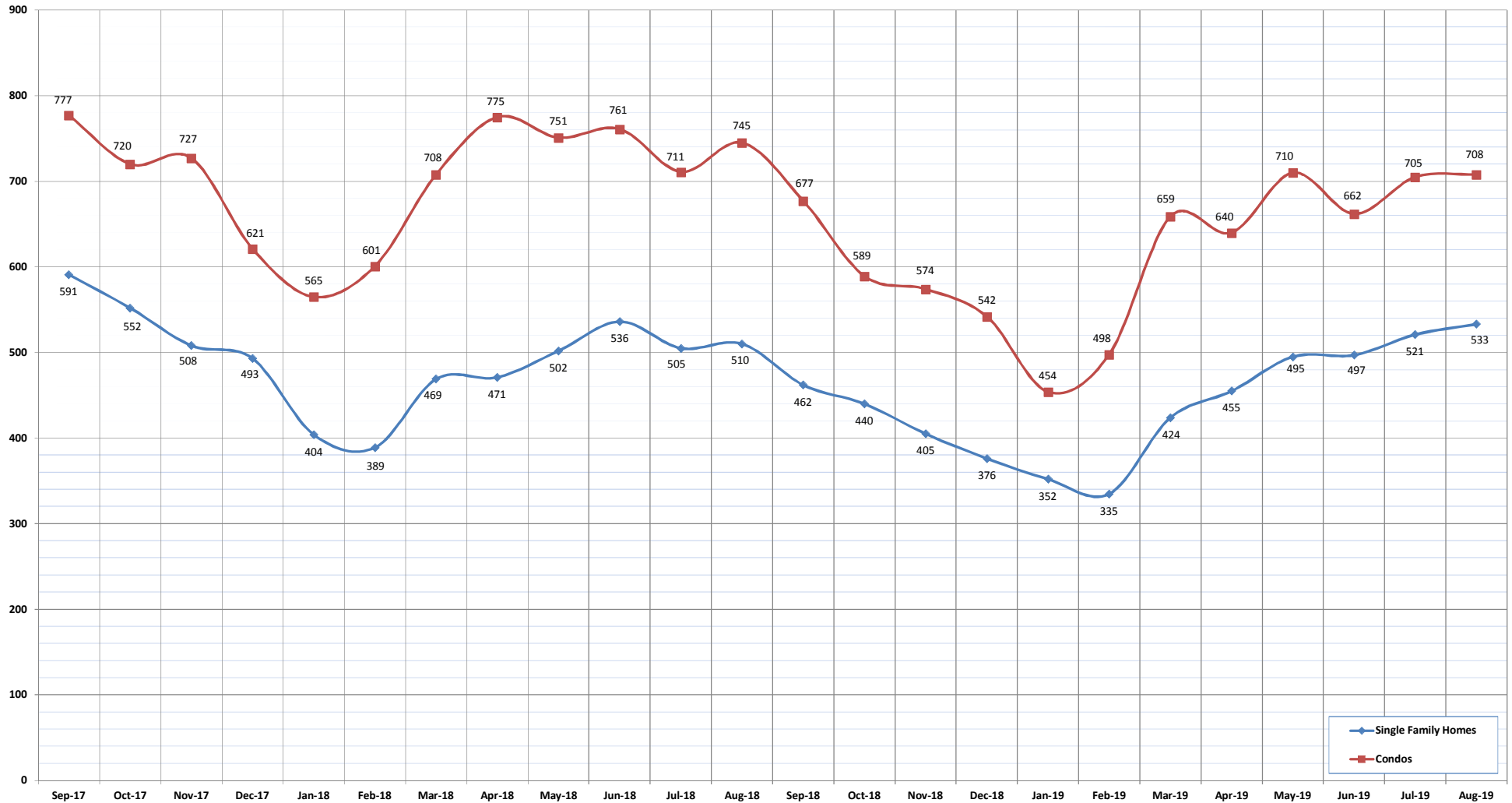
©Copyright 2019. Honolulu Board of REALTORS®. All Rights Reserved. Information herein deemed reliable but not guaranteed.

Pending Sales

August 2019

OAHU, HAWAII

(A count of the properties that have offers accepted on them in a given month)



PENDING SALES:	Sep-17	Oct-17	Nov-17	Dec-17	Jan-18	Feb-18	Mar-18	Apr-18	May-18	Jun-18	Jul-18	Aug-18	Sep-18	Oct-18	Nov-18	Dec-18	Jan-19	Feb-19	Mar-19	Apr-19	May-19	Jun-19	Jul-19	Aug-19
Single Family Homes	591	552	508	493	404	389	469	471	502	536	505	510	462	440	405	376	352	335	424	455	495	497	521	533
Condos	777	720	727	621	565	601	708	775	751	761	711	745	677	589	574	542	454	498	659	640	710	662	705	708
TOTAL	1368	1272	1235	1114	969	990	1177	1246	1253	1297	1216	1255	1139	1029	979	918	806	833	1083	1095	1205	1159	1226	1241

SOURCE: Honolulu Board of REALTORS®, compiled from MLS data.

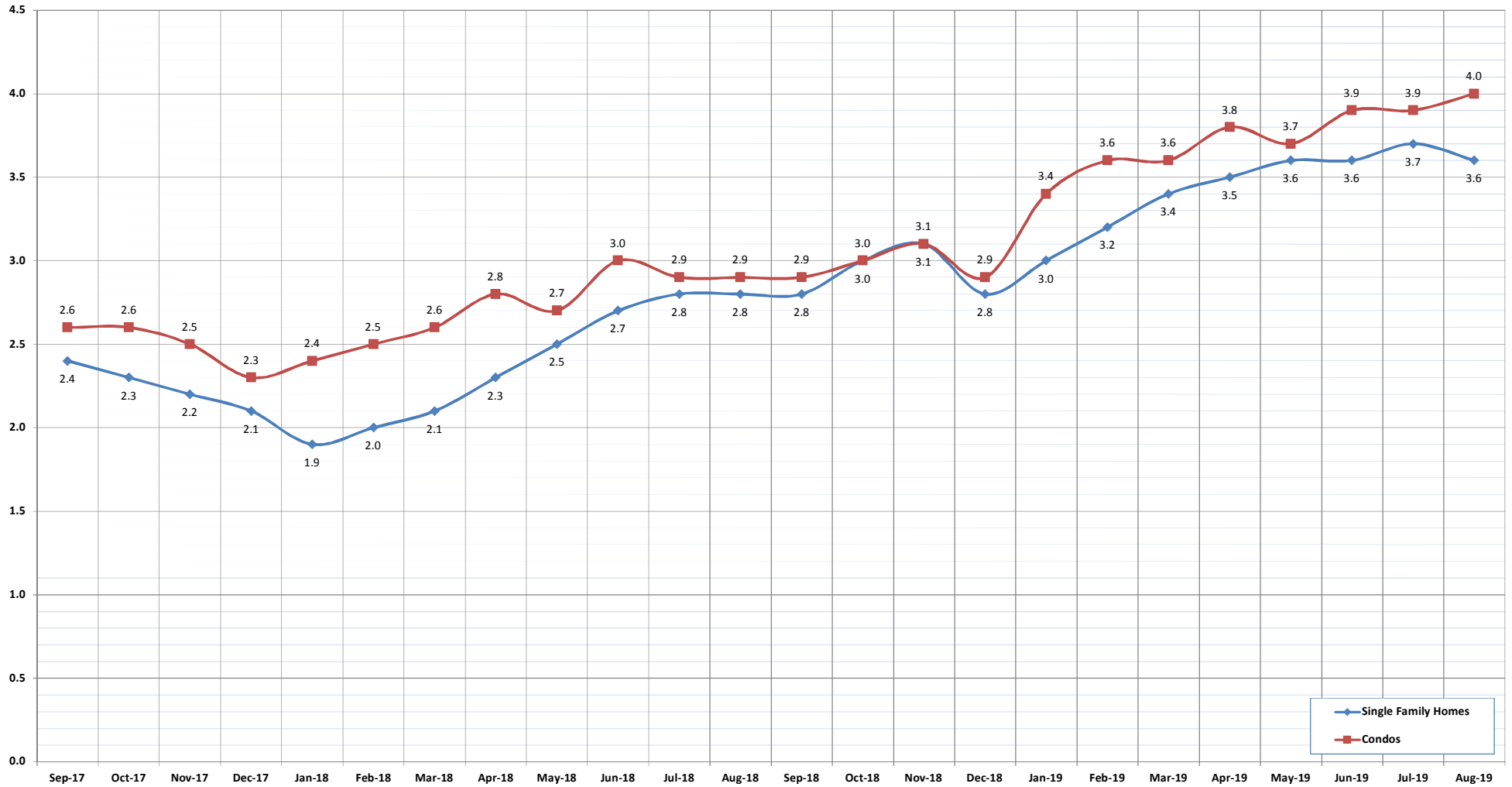
©Copyright 2019. Honolulu Board of REALTORS®, All Rights Reserved. Information herein deemed reliable but not guaranteed.

Months of Inventory

August 2019

OAHU, HAWAII

(Compares the number of active listings available to the average monthly pending sales)



MONTHS OF INVENTORY:	Sep-17	Oct-17	Nov-17	Dec-17	Jan-18	Feb-18	Mar-18	Apr-18	May-18	Jun-18	Jul-18	Aug-18	Sep-18	Oct-18	Nov-18	Dec-18	Jan-19	Feb-19	Mar-19	Apr-19	May-19	Jun-19	Jul-19	Aug-19
Single Family Homes	2.4	2.3	2.2	2.1	1.9	2.0	2.1	2.3	2.5	2.7	2.8	2.8	2.8	3.0	3.1	2.8	3.0	3.2	3.4	3.5	3.6	3.6	3.7	3.6
Condos	2.6	2.6	2.5	2.3	2.4	2.5	2.6	2.8	2.7	3.0	2.9	2.9	2.9	3.0	3.1	2.9	3.4	3.6	3.6	3.8	3.7	3.9	3.9	4.0

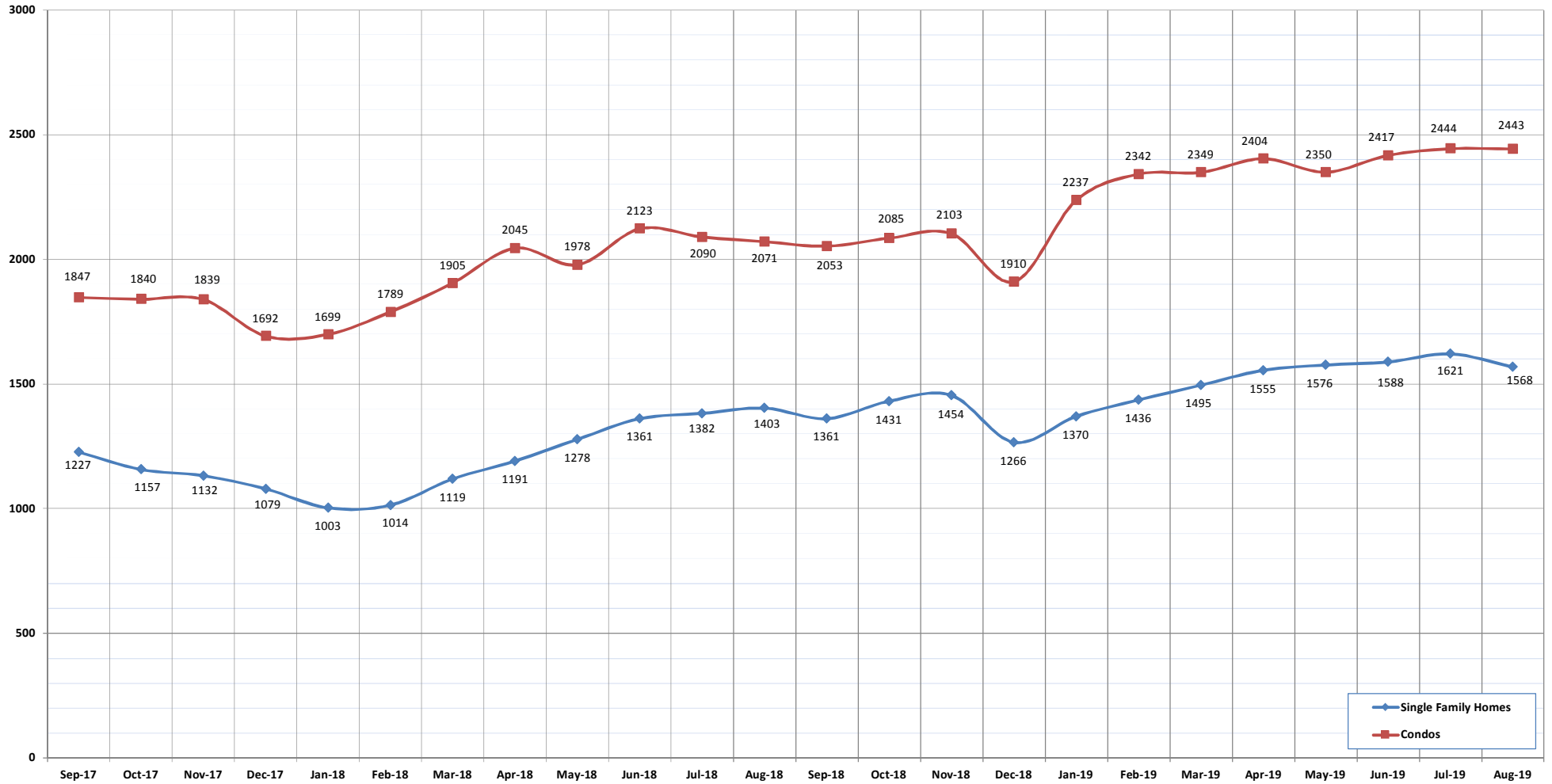
SOURCE: Honolulu Board of REALTORS®, compiled from MLS data.

©Copyright 2019. Honolulu Board of REALTORS®. All Rights Reserved. Information herein deemed reliable but not guaranteed.

Active Listings

August 2019
OAHU, HAWAII

(The number of properties available for purchase during a given month)



ACTIVE LISTINGS:	Sep-17	Oct-17	Nov-17	Dec-17	Jan-18	Feb-18	Mar-18	Apr-18	May-18	Jun-18	Jul-18	Aug-18	Sep-18	Oct-18	Nov-18	Dec-18	Jan-19	Feb-19	Mar-19	Apr-19	May-19	Jun-19	Jul-19	Aug-19
Single Family Homes	1227	1157	1132	1079	1003	1014	1119	1191	1278	1361	1382	1403	1361	1431	1454	1266	1370	1436	1495	1555	1576	1588	1621	1568
Condos	1847	1840	1839	1692	1699	1789	1905	2045	1978	2123	2090	2071	2053	2085	2103	1910	2237	2342	2349	2404	2350	2417	2444	2443
TOTAL	3074	2997	2971	2771	2702	2803	3024	3236	3256	3484	3472	3474	3414	3516	3557	3176	3607	3778	3844	3959	3926	4005	4065	4011

SOURCE: Honolulu Board of REALTORS®, compiled from MLS data.

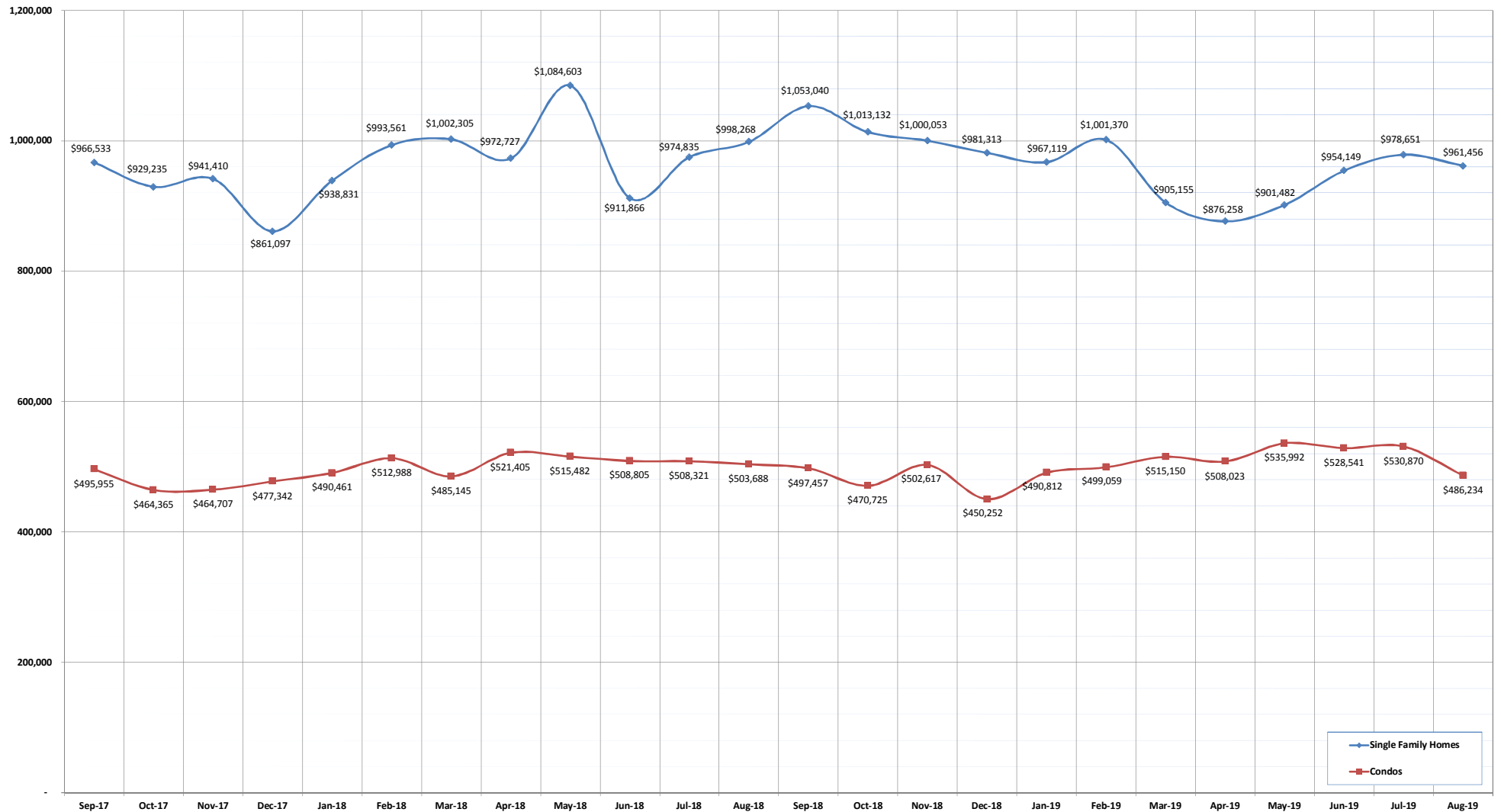
©Copyright 2019. Honolulu Board of REALTORS®, All Rights Reserved. Information herein deemed reliable but not guaranteed.

Average Sales Price

August 2019

OAHU, HAWAII

(The average sales price for all closed sales in a given month)



AVERAGE SALES PRICE:	Sep-17	Oct-17	Nov-17	Dec-17	Jan-18	Feb-18	Mar-18	Apr-18	May-18	Jun-18	Jul-18	Aug-18	Sep-18	Oct-18	Nov-18	Dec-18	Jan-19	Feb-19	Mar-19	Apr-19	May-19	Jun-19	Jul-19	Aug-19
Single Family Homes	966,533	929,235	941,410	861,097	938,831	993,561	1,002,305	972,727	1,084,603	911,866	974,835	998,268	1,053,040	1,013,132	1,000,053	981,313	967,119	1,001,370	905,155	876,258	901,482	954,149	978,651	961,456
Condos	495,955	464,365	464,707	477,342	490,461	512,988	485,145	521,405	515,482	508,805	508,321	503,688	497,457	470,725	502,617	450,252	490,812	499,059	515,150	508,023	535,992	528,541	530,870	486,234

SOURCE: Honolulu Board of REALTORS®, compiled from MLS data.

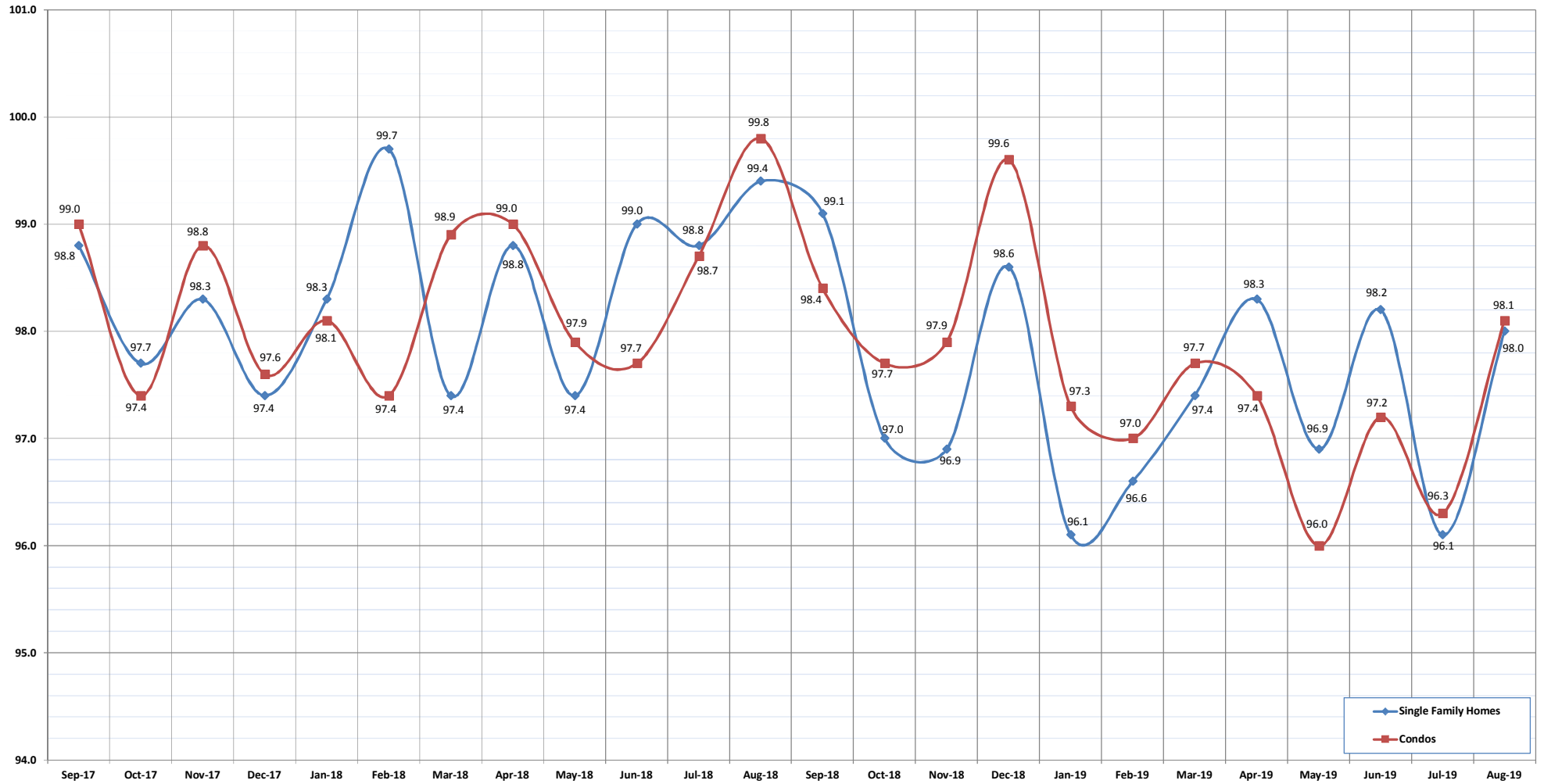
©Copyright 2019. Honolulu Board of REALTORS®. All Rights Reserved. Information herein deemed reliable but not guaranteed.

Percent of Original List Price Received

August 2019

OAHU, HAWAII

(The percentage found when dividing a property's sales price by the original list price)



% OF ORIGINAL LIST PRICE RECEIVED:	Sep-17	Oct-17	Nov-17	Dec-17	Jan-18	Feb-18	Mar-18	Apr-18	May-18	Jun-18	Jul-18	Aug-18	Sep-18	Oct-18	Nov-18	Dec-18	Jan-19	Feb-19	Mar-19	Apr-19	May-19	Jun-19	Jul-19	Aug-19
Single Family Homes	98.8	97.7	98.3	97.4	98.3	99.7	97.4	98.8	97.4	99.0	98.8	99.4	99.1	97.0	96.9	98.6	96.1	96.6	97.4	98.3	96.9	98.2	96.1	98.0
Condos	99.0	97.4	98.8	97.6	98.1	97.4	98.9	99.0	97.9	97.7	98.7	99.8	98.4	97.7	97.9	99.6	97.3	97.0	97.7	97.4	96.0	97.2	96.3	98.1

SOURCE: Honolulu Board of REALTORS®, compiled from MLS data.

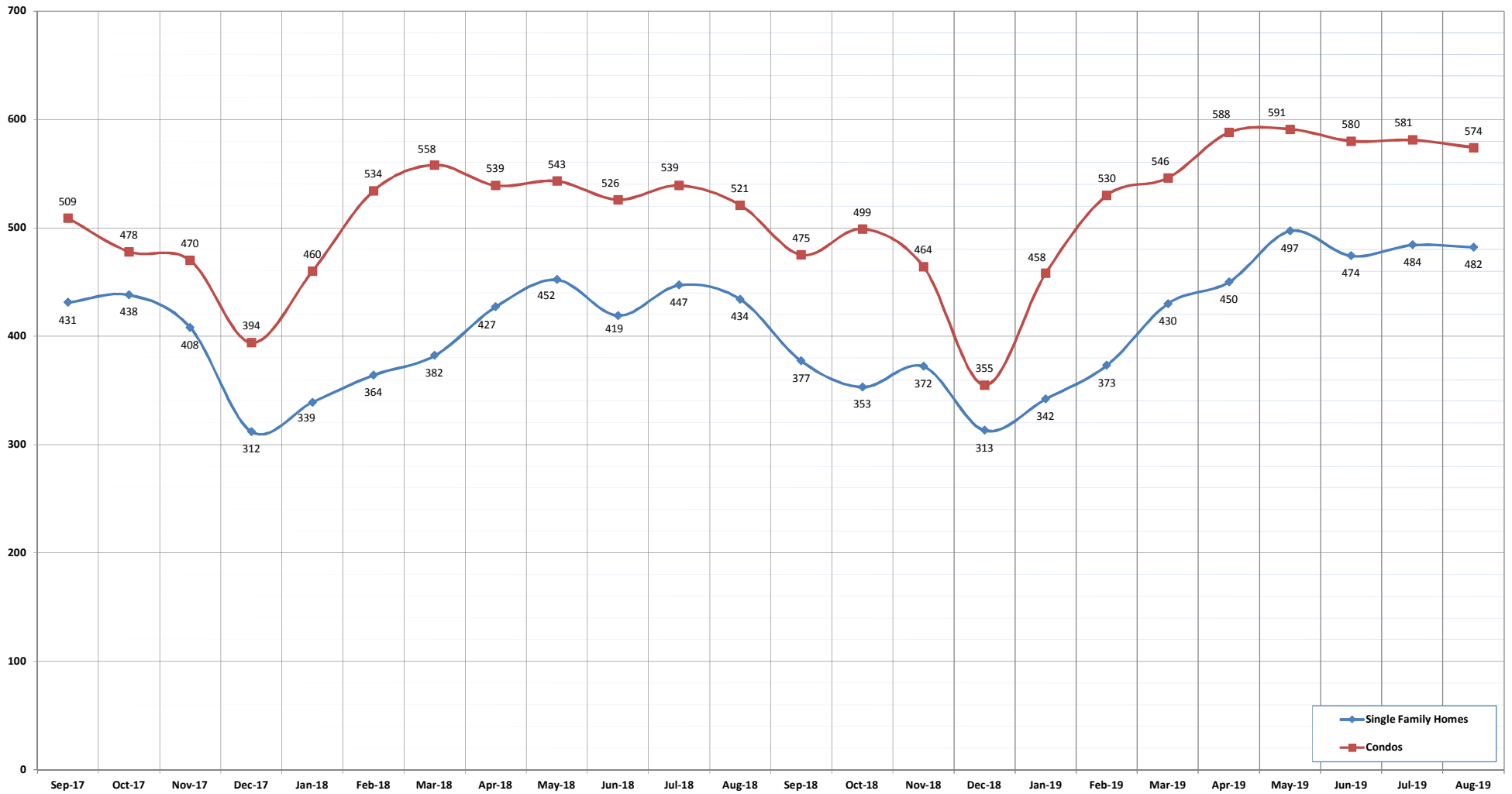
©Copyright 2019. Honolulu Board of REALTORS®. All Rights Reserved. Information herein deemed reliable but not guaranteed.

Active Continue to Show

August 2019

OAHU, HAWAII

(A count of the properties that are in "ES" status during the current month)



ACTIVE CONTINUE TO SHOW:	Sep-17	Oct-17	Nov-17	Dec-17	Jan-18	Feb-18	Mar-18	Apr-18	May-18	Jun-18	Jul-18	Aug-18	Sep-18	Oct-18	Nov-18	Dec-18	Jan-19	Feb-19	Mar-19	Apr-19	May-19	Jun-19	Jul-19	Aug-19
Single Family Homes	431	438	408	312	339	364	382	427	452	419	447	434	377	353	372	313	342	373	430	450	497	474	484	482
Condos	509	478	470	394	460	534	558	539	543	526	539	521	475	499	464	355	458	530	546	588	591	580	581	574
TOTAL	940	916	878	706	799	898	940	966	995	945	986	955	852	852	836	668	800	903	976	1038	1088	1054	1065	1056

SOURCE: Honolulu Board of REALTORS®, compiled from MLS data.

©Copyright 2019. Honolulu Board of REALTORS®, All Rights Reserved. Information herein deemed reliable but not guaranteed.

Housing Supply Overview

August 2019

OAHU, HAWAII

Single Family Homes	Pending Sales			Days on Market			Percentage of Original Price Received			Inventory of Homes for Sale			Months Supply of Inventory		
	Aug-19	Aug-18	%	Aug-19	Aug-18	%	Aug-19	Aug-18	%	Aug-19	Aug-18	%	Aug-19	Aug-18	%
\$350,000 and Below	57	67	-14.9%	54	26	108.8%	94.2%	95.5%	-1.3%	18	22	-18.2%	3.5	3.2	10.7%
\$350,001 - \$475,000	121	190	-36.3%	22	25	-11.8%	97.2%	98.7%	-1.6%	29	34	-14.7%	2.4	2.0	18.8%
\$475,001 - \$550,000	203	249	-18.5%	30	18	64.4%	97.3%	98.1%	-0.9%	45	54	-16.7%	2.5	2.4	3.0%
\$550,001 - \$650,000	504	574	-12.2%	29	15	91.1%	98.2%	99.5%	-1.3%	162	111	45.9%	3.8	2.1	82.4%
\$650,001 - \$800,000	1110	1150	-3.5%	24	15	63.1%	97.7%	98.3%	-0.6%	321	273	17.6%	3.6	2.9	24.3%
\$800,001 - \$1.1M	1033	1022	1.1%	22	16	35.7%	97.1%	99.2%	-2.1%	375	352	6.5%	4.4	4.3	3.4%
\$1.1M - \$1.9M	574	609	-5.7%	30	27	10.5%	94.0%	96.7%	-2.8%	348	330	5.5%	7.0	6.8	3.3%
\$1.9M and Above	179	198	-9.6%	39	48	-19.3%	92.1%	92.6%	-0.5%	270	227	18.9%	17.3	14.2	22.0%
All Single Family Homes	3781	4059	-6.8%	24	16	49.5%	97.5%	98.4%	-1.0%	1568	1403	11.8%	5.0	4.1	20.9%

Condos	Pending Sales			Days on Market			Percentage of Original Price Received			Inventory of Homes for Sale			Months Supply of Inventory		
	Aug-19	Aug-18	%	Aug-19	Aug-18	%	Aug-19	Aug-18	%	Aug-19	Aug-18	%	Aug-19	Aug-18	%
\$150,000 and below	243	305	-20.3%	42	43	-2.9%	90.5%	91.4%	-1.0%	112	142	-21.1%	5.1	5.4	-5.7%
\$150,001 - \$200,000	261	277	-5.8%	28	30	-8.3%	96.2%	96.7%	-0.5%	96	103	-6.8%	4.3	4.0	8.1%
\$200,001 - \$250,000	378	417	-9.4%	26	23	13.4%	97.1%	95.9%	1.2%	133	151	-11.9%	4.2	4.2	-0.9%
\$250,001 - \$300,000	417	447	-6.7%	29	18	63.4%	97.1%	97.8%	-0.7%	168	140	20.0%	4.6	3.5	32.7%
\$300,001 - \$375,000	960	1010	-5.0%	19	15	25.3%	98.2%	98.8%	-0.6%	301	212	42.0%	3.7	2.4	55.9%
\$375,001 - \$475,000	1128	1233	-8.5%	22	15	49.4%	97.7%	98.6%	-0.9%	419	336	24.7%	4.3	3.3	29.2%
\$475,001 - \$700,000	1502	1620	-7.3%	26	17	53.9%	97.8%	98.8%	-1.0%	601	466	29.0%	4.7	3.6	31.4%
\$700,001 and above	788	817	-3.5%	37	37	-0.8%	96.5%	96.6%	-0.1%	613	521	17.7%	9.2	8.6	6.9%
All Condos	5677	6126	-7.3%	25	19	30.3%	97.6%	98.3%	-0.8%	2443	2071	18.0%	5.0	4.1	22.9%

SOURCE: Honolulu Board of REALTORS®, compiled from MLS data.

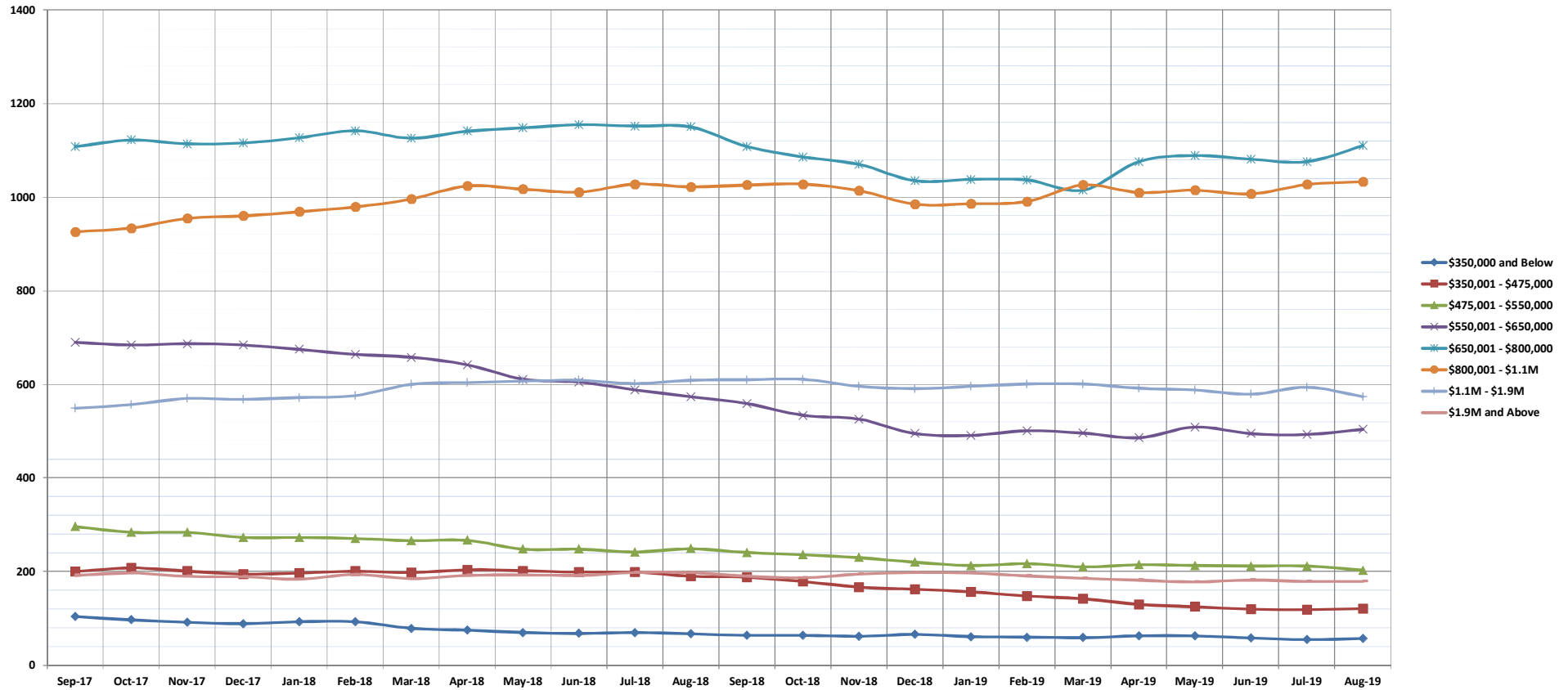
©Copyright 2019. Honolulu Board of REALTORS®. All Rights Reserved. Information herein deemed reliable but not guaranteed.

Pending Sales

August 2019

Single Family Homes: Monthly, by Price Range

(A count of properties that have offers accepted on them in a given month. Based on a 12 month rolling total.)



	Sep-17	Oct-17	Nov-17	Dec-17	Jan-18	Feb-18	Mar-18	Apr-18	May-18	Jun-18	Jul-18	Aug-18	Sep-18	Oct-18	Nov-18	Dec-18	Jan-19	Feb-19	Mar-19	Apr-19	May-19	Jun-19	Jul-19	Aug-19
\$350,000 and Below	104	97	92	89	93	93	79	75	70	68	70	67	64	64	62	66	61	60	59	63	63	58	55	57
\$350,001 - \$475,000	200	208	201	195	197	201	198	204	202	199	199	190	188	179	167	162	157	148	142	130	125	120	119	121
\$475,001 - \$550,000	296	284	284	273	273	271	266	267	248	248	242	249	241	236	230	220	213	217	210	215	213	212	212	203
\$550,001 - \$650,000	690	684	687	684	675	664	658	642	611	605	588	574	559	534	526	495	491	501	496	486	509	495	493	504
\$650,001 - \$800,000	1108	1122	1114	1116	1127	1142	1126	1141	1148	1155	1152	1150	1108	1086	1070	1035	1038	1037	1015	1076	1089	1081	1076	1110
\$800,001 - \$1.1M	926	934	955	960	969	979	996	1024	1017	1011	1028	1022	1026	1028	1014	985	986	991	1026	1010	1015	1007	1027	1033
\$1.1M - \$1.9M	549	557	570	568	572	576	600	604	607	609	602	609	610	611	596	591	596	601	601	592	588	579	594	574
\$1.9M and Above	192	197	190	189	184	194	185	192	193	192	198	198	190	187	195	198	197	191	186	182	178	182	179	179
All Single Family Homes	4065	4083	4093	4074	4090	4120	4108	4149	4096	4087	4079	4059	3986	3925	3860	3752	3739	3746	3735	3754	3780	3734	3755	3781

SOURCE: Honolulu Board of REALTORS®, compiled from MLS data.

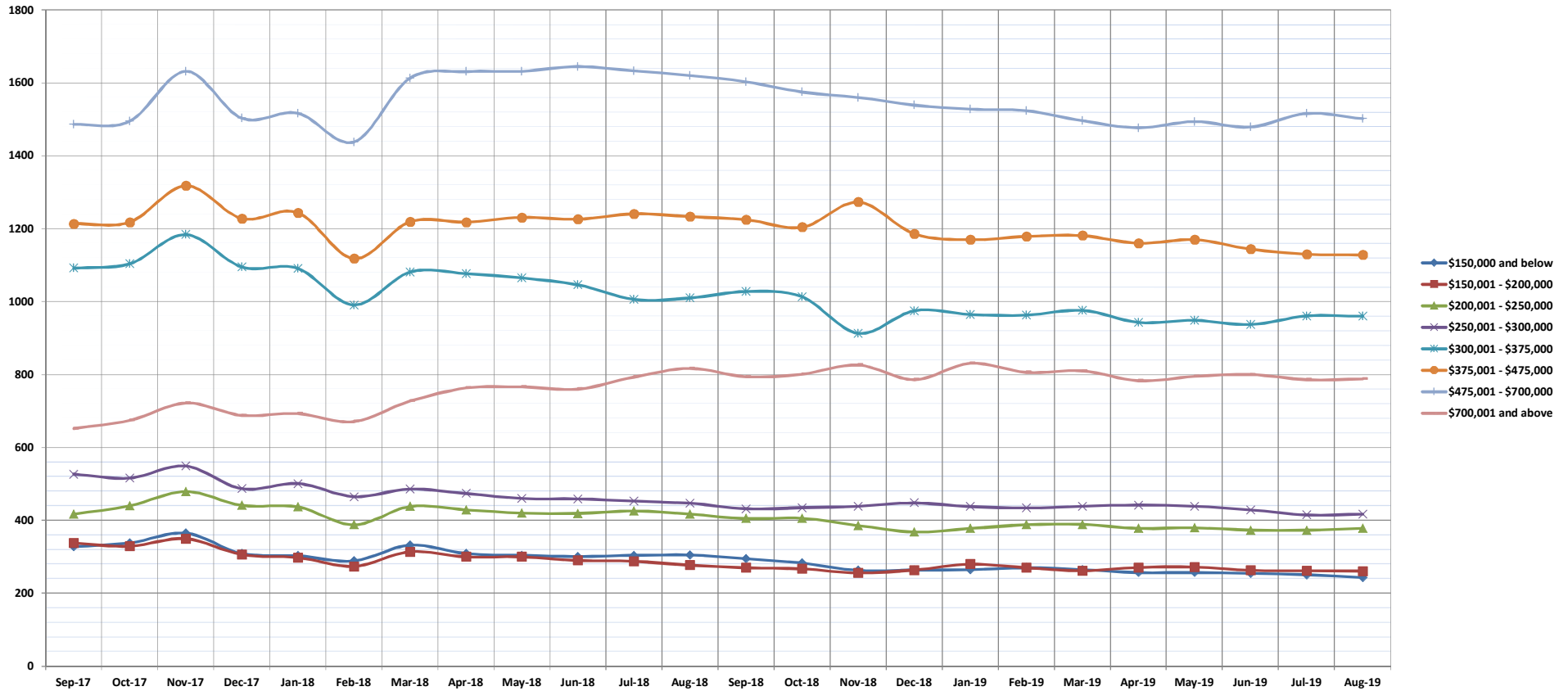
©Copyright 2019. Honolulu Board of REALTORS®, All Rights Reserved. Information herein deemed reliable but not guaranteed.

Pending Sales

August 2019

Condos: Monthly, by Price Range

(A count of properties that have offers accepted on them in a given month. Based on a 12 month rolling total.)



	Sep-17	Oct-17	Nov-17	Dec-17	Jan-18	Feb-18	Mar-18	Apr-18	May-18	Jun-18	Jul-18	Aug-18	Sep-18	Oct-18	Nov-18	Dec-18	Jan-19	Feb-19	Mar-19	Apr-19	May-19	Jun-19	Jul-19	Aug-19
\$150,000 and below	328	338	365	309	303	289	332	309	304	301	304	305	295	283	263	264	265	270	265	257	257	255	251	243
\$150,001 - \$200,000	338	329	350	306	298	274	314	300	300	290	288	277	270	267	256	264	280	270	262	271	272	263	262	261
\$200,001 - \$250,000	417	440	479	441	437	388	438	429	420	419	426	417	405	406	386	368	378	388	389	378	380	373	373	378
\$250,001 - \$300,000	527	516	549	487	501	465	486	474	460	459	453	447	432	435	439	448	438	434	439	442	439	429	415	417
\$300,001 - \$375,000	1092	1104	1184	1095	1091	991	1081	1077	1065	1046	1006	1010	1028	1013	913	975	965	963	976	943	949	937	961	960
\$375,001 - \$475,000	1214	1218	1318	1228	1244	1118	1219	1218	1231	1226	1241	1233	1225	1204	1273	1186	1170	1179	1181	1160	1170	1144	1130	1128
\$475,001 - \$700,000	1486	1495	1632	1503	1517	1438	1613	1631	1632	1645	1633	1620	1603	1575	1560	1539	1528	1524	1496	1477	1494	1479	1516	1502
\$700,001 and above	652	674	722	688	693	671	727	763	766	760	793	817	794	801	826	786	831	806	810	783	795	800	786	788
All Condos	6054	6114	6599	6057	6084	5634	6210	6201	6178	6146	6144	6126	6052	5984	5916	5830	5855	5834	5818	5711	5756	5680	5694	5677

SOURCE: Honolulu Board of REALTORS®, compiled from MLS data.

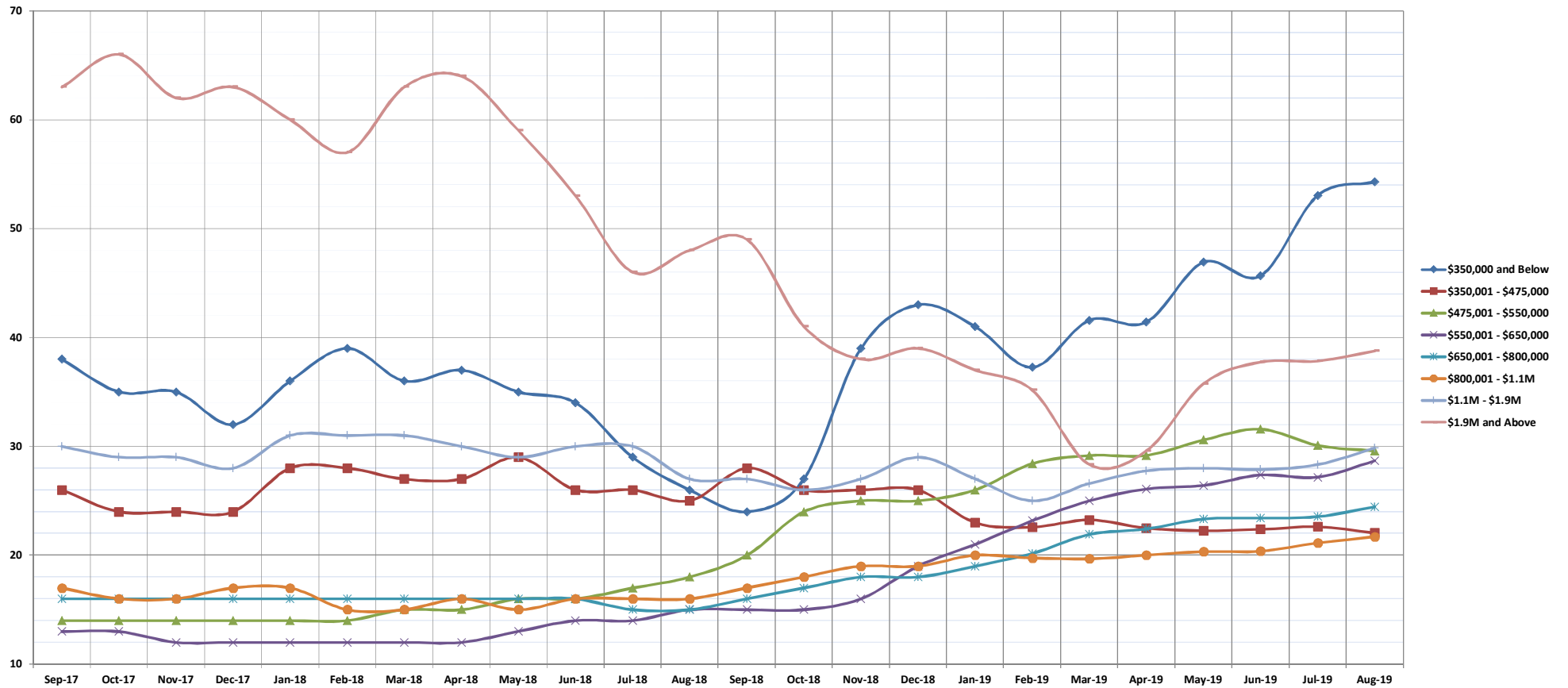
©Copyright 2019. Honolulu Board of REALTORS®. All Rights Reserved. Information herein deemed reliable but not guaranteed.

Days on Market Until Sale

August 2019

Single Family Homes: Monthly, by Price Range

(The median number of days between when a property is first listed and when an offer is accepted. Based on a 12 month rolling median.)



	Sep-17	Oct-17	Nov-17	Dec-17	Jan-18	Feb-18	Mar-18	Apr-18	May-18	Jun-18	Jul-18	Aug-18	Sep-18	Oct-18	Nov-18	Dec-18	Jan-19	Feb-19	Mar-19	Apr-19	May-19	Jun-19	Jul-19	Aug-19
\$350,000 and Below	38	35	35	32	36	39	36	37	35	34	29	26	24	27	39	43	41	37	42	41	47	46	53	54
\$350,001 - \$475,000	26	24	24	24	28	28	27	27	29	26	26	25	28	26	26	26	23	23	23	23	22	22	23	22
\$475,001 - \$550,000	14	14	14	14	14	14	15	15	16	16	17	18	20	24	25	25	26	28	29	29	31	32	30	30
\$550,001 - \$650,000	13	13	12	12	12	12	12	12	13	14	14	15	15	15	16	19	21	23	25	26	26	27	27	29
\$650,001 - \$800,000	16	16	16	16	16	16	16	16	16	16	15	15	16	17	18	18	19	20	22	22	23	23	24	24
\$800,001 - \$1.1M	17	16	16	17	17	15	15	16	15	16	16	16	17	18	19	19	20	20	20	20	20	20	21	22
\$1.1M - \$1.9M	30	29	29	28	31	31	31	30	29	30	30	27	27	26	27	29	27	25	27	28	28	28	28	30
\$1.9M and Above	63	66	62	63	60	57	63	64	59	53	46	48	49	41	38	39	37	35	28	30	36	38	38	39
All Single Family Homes	18	17	17	17	17	17	17	17	17	17	16	16	16	18	19	19	20	20	21	22	22	23	23	24

SOURCE: Honolulu Board of REALTORS®, compiled from MLS data.

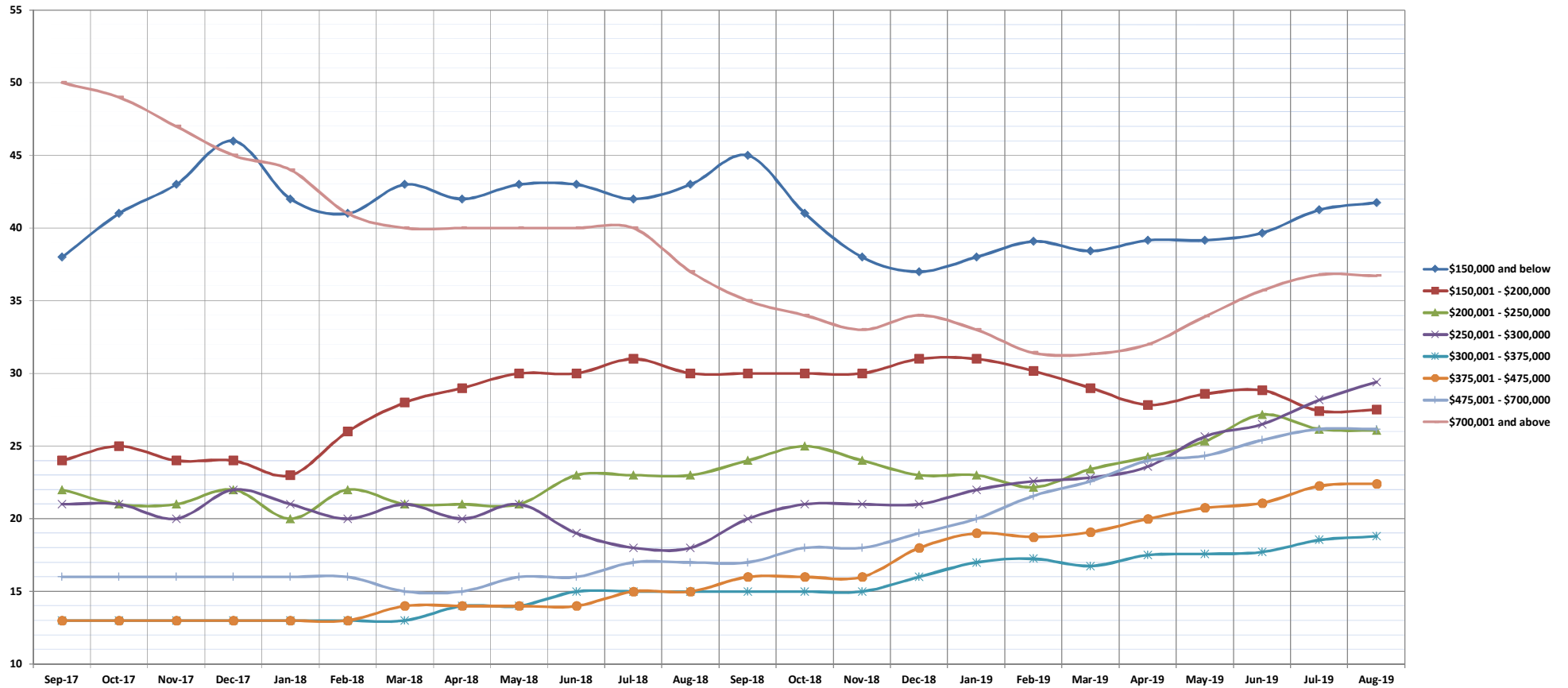
©Copyright 2019. Honolulu Board of REALTORS®, All Rights Reserved. Information herein deemed reliable but not guaranteed.

Days on Market Until Sale

August 2019

Condos: Monthly, by Price Range

(The median number of days between when a property is first listed and when an offer is accepted. Based on a 12 month rolling median.)



	Sep-17	Oct-17	Nov-17	Dec-17	Jan-18	Feb-18	Mar-18	Apr-18	May-18	Jun-18	Jul-18	Aug-18	Sep-18	Oct-18	Nov-18	Dec-18	Jan-19	Feb-19	Mar-19	Apr-19	May-19	Jun-19	Jul-19	Aug-19
\$150,000 and below	38	41	43	46	42	41	43	42	43	43	42	43	45	41	38	37	38	39	38	39	39	40	41	42
\$150,001 - \$200,000	24	25	24	24	23	26	28	29	30	30	31	30	30	30	30	31	31	30	29	28	29	29	27	28
\$200,001 - \$250,000	22	21	21	22	20	22	21	21	21	23	23	23	24	25	24	23	23	22	23	24	25	27	26	26
\$250,001 - \$300,000	21	21	20	22	21	20	21	20	21	19	18	18	20	21	21	21	22	23	23	24	26	27	28	29
\$300,001 - \$375,000	13	13	13	13	13	13	13	14	14	15	15	15	15	15	15	16	17	17	17	18	18	18	19	19
\$375,001 - \$475,000	13	13	13	13	13	13	14	14	14	14	15	15	16	16	16	18	19	19	19	20	21	21	22	22
\$475,001 - \$700,000	16	16	16	16	16	16	15	15	16	16	17	17	17	18	18	19	20	22	23	24	24	25	26	26
\$700,001 and above	50	49	47	45	44	41	40	40	40	40	40	37	35	34	33	34	33	31	31	32	34	36	37	37
All Condos	18	18	18	18	17	17	18	18	18	19	19	19	19	19	20	20	21	21	21	22	23	24	24	25

SOURCE: Honolulu Board of REALTORS®, compiled from MLS data.

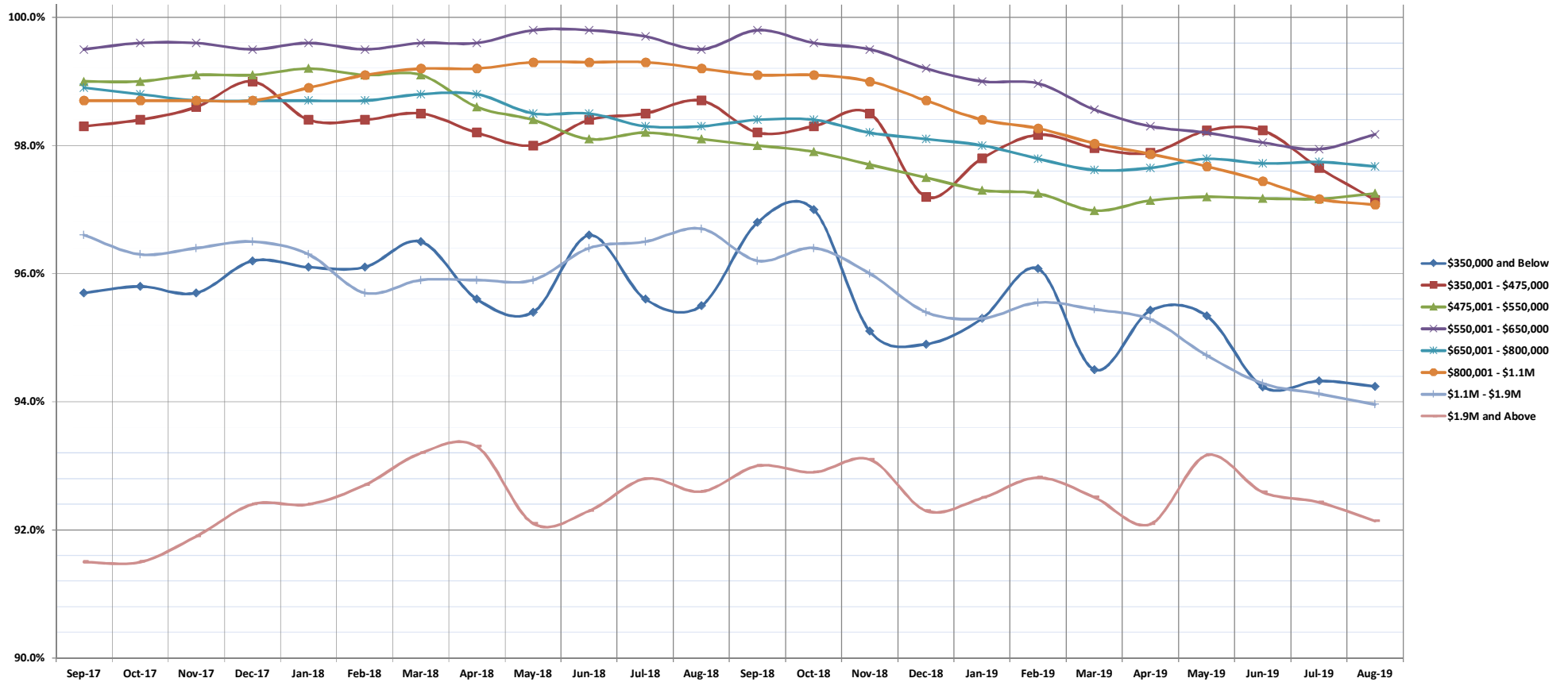
©Copyright 2019. Honolulu Board of REALTORS®, All Rights Reserved. Information herein deemed reliable but not guaranteed.

Percentage of Original List Price Received

August 2019

Single Family Homes: Monthly, by Price Range

(The average percentage found when dividing a property's sales price by the original list price. Based on a rolling 12 month average.)



	Sep-17	Oct-17	Nov-17	Dec-17	Jan-18	Feb-18	Mar-18	Apr-18	May-18	Jun-18	Jul-18	Aug-18	Sep-18	Oct-18	Nov-18	Dec-18	Jan-19	Feb-19	Mar-19	Apr-19	May-19	Jun-19	Jul-19	Aug-19
\$350,000 and Below	95.7%	95.8%	95.7%	96.2%	96.1%	96.1%	96.5%	95.6%	95.4%	96.6%	95.6%	95.5%	96.8%	97.0%	95.1%	94.9%	95.3%	96.1%	94.5%	95.4%	95.3%	94.2%	94.3%	94.2%
\$350,001 - \$475,000	98.3%	98.4%	98.6%	99.0%	98.4%	98.4%	98.5%	98.2%	98.0%	98.4%	98.5%	98.7%	98.2%	98.3%	98.5%	97.2%	97.8%	98.2%	98.0%	97.9%	98.2%	98.2%	97.7%	97.2%
\$475,001 - \$550,000	99.0%	99.0%	99.1%	99.1%	99.2%	99.1%	99.1%	98.6%	98.4%	98.1%	98.2%	98.1%	98.0%	97.9%	97.7%	97.5%	97.3%	97.3%	97.0%	97.1%	97.2%	97.2%	97.2%	97.3%
\$550,001 - \$650,000	99.5%	99.6%	99.6%	99.5%	99.6%	99.5%	99.6%	99.6%	99.8%	99.8%	99.7%	99.5%	99.8%	99.6%	99.5%	99.2%	99.0%	99.0%	98.6%	98.3%	98.2%	98.0%	97.9%	98.2%
\$650,001 - \$800,000	98.9%	98.8%	98.7%	98.7%	98.7%	98.7%	98.8%	98.8%	98.5%	98.5%	98.3%	98.3%	98.4%	98.4%	98.2%	98.1%	98.0%	97.8%	97.6%	97.7%	97.8%	97.7%	97.7%	97.7%
\$800,001 - \$1.1M	98.7%	98.7%	98.7%	98.7%	98.9%	99.1%	99.2%	99.2%	99.3%	99.3%	99.3%	99.2%	99.1%	99.1%	99.0%	98.7%	98.4%	98.3%	98.0%	97.9%	97.7%	97.4%	97.2%	97.1%
\$1.1M - \$1.9M	96.6%	96.3%	96.4%	96.5%	96.3%	95.7%	95.9%	95.9%	95.9%	96.4%	96.5%	96.7%	96.2%	96.4%	96.0%	95.4%	95.3%	95.6%	95.4%	95.3%	94.7%	94.3%	94.1%	94.0%
\$1.9M and Above	91.5%	91.5%	91.9%	92.4%	92.4%	92.7%	93.2%	93.3%	92.1%	92.3%	92.8%	92.6%	93.0%	92.9%	93.1%	92.3%	92.5%	92.8%	92.5%	92.1%	93.2%	92.6%	92.4%	92.1%
All Single Family Homes	98.5%	98.4%	98.3%	98.2%	98.2%	98.3%	98.3%	98.4%	98.3%	98.2%	98.4%	98.4%	98.4%	98.4%	98.3%	98.4%	98.2%	97.9%	97.9%	97.9%	97.9%	97.8%	97.6%	97.5%

SOURCE: Honolulu Board of REALTORS®, compiled from MLS data.

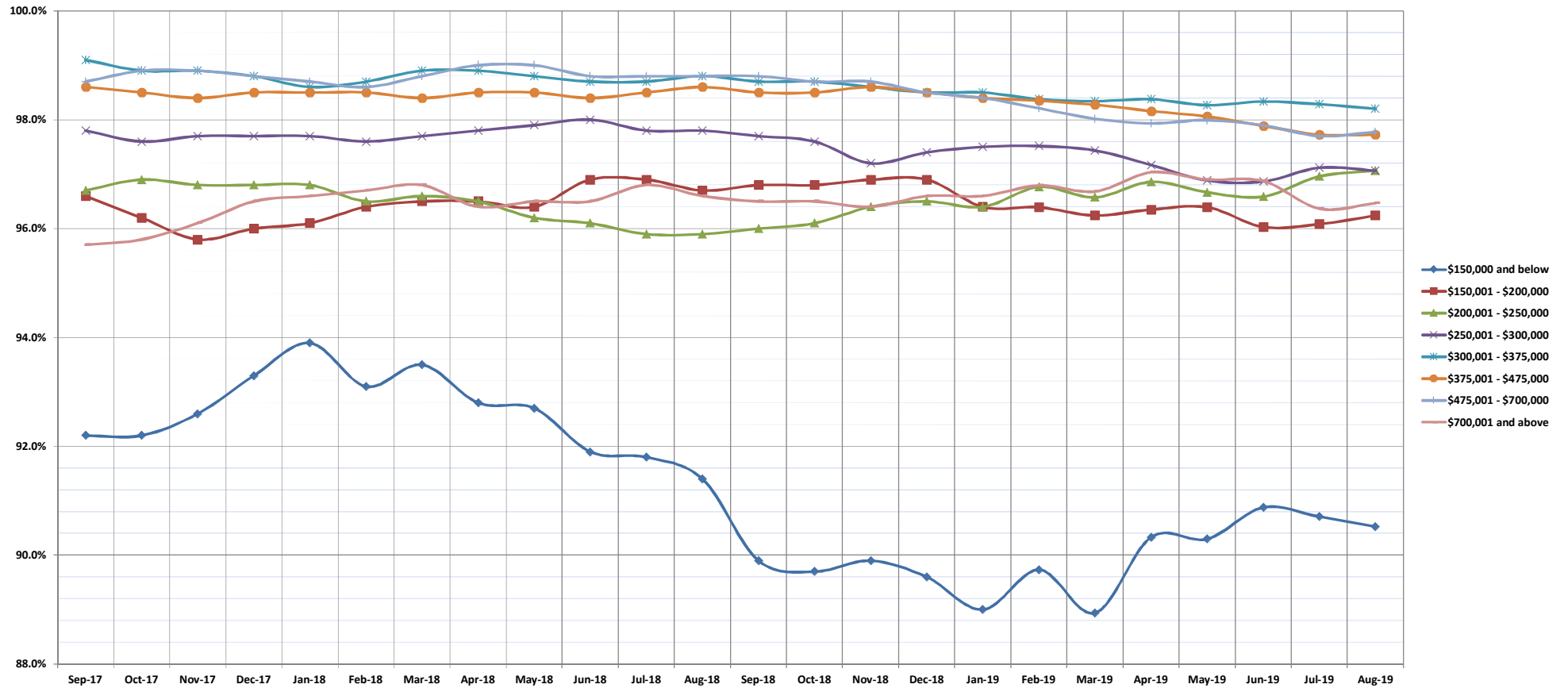
©Copyright 2019. Honolulu Board of REALTORS®. All Rights Reserved. Information herein deemed reliable but not guaranteed.

Percentage of Original List Price Received

August 2019

Condos: Monthly, by Price Range

(The average percentage found when dividing a property's sales price by the original list price. Based on a rolling 12 month average.)



	Sep-17	Oct-17	Nov-17	Dec-17	Jan-18	Feb-18	Mar-18	Apr-18	May-18	Jun-18	Jul-18	Aug-18	Sep-18	Oct-18	Nov-18	Dec-18	Jan-19	Feb-19	Mar-19	Apr-19	May-19	Jun-19	Jul-19	Aug-19		
\$150,000 and below	92.2%	92.2%	92.6%	93.3%	93.9%	93.1%	93.5%	92.8%	92.7%	91.9%	91.8%	91.4%	89.9%	89.7%	89.9%	89.6%	89.0%	89.7%	88.9%	90.3%	90.3%	90.9%	90.7%	90.5%		
\$150,001 - \$200,000	96.6%	96.2%	95.8%	96.0%	96.1%	96.4%	96.5%	96.5%	96.4%	96.9%	96.9%	96.7%	96.8%	96.8%	96.9%	96.9%	96.4%	96.4%	96.2%	96.4%	96.4%	96.4%	96.4%	96.0%	96.1%	96.2%
\$200,001 - \$250,000	96.7%	96.9%	96.8%	96.8%	96.8%	96.5%	96.6%	96.5%	96.2%	96.1%	95.9%	95.9%	96.0%	96.1%	96.4%	96.5%	96.4%	96.8%	96.6%	96.9%	96.7%	96.6%	97.0%	97.1%		
\$250,001 - \$300,000	97.8%	97.6%	97.7%	97.7%	97.7%	97.6%	97.7%	97.8%	97.9%	98.0%	97.8%	97.8%	97.7%	97.6%	97.2%	97.4%	97.5%	97.5%	97.4%	97.2%	96.9%	96.9%	97.1%	97.1%		
\$300,001 - \$375,000	99.1%	98.9%	98.9%	98.8%	98.6%	98.7%	98.9%	98.9%	98.8%	98.7%	98.7%	98.8%	98.7%	98.7%	98.6%	98.5%	98.5%	98.4%	98.3%	98.4%	98.3%	98.3%	98.3%	98.3%	98.2%	
\$375,001 - \$475,000	98.6%	98.5%	98.4%	98.5%	98.5%	98.5%	98.4%	98.5%	98.5%	98.4%	98.5%	98.6%	98.5%	98.5%	98.6%	98.5%	98.4%	98.4%	98.3%	98.2%	98.1%	97.9%	97.7%	97.7%		
\$475,001 - \$700,000	98.7%	98.9%	98.9%	98.8%	98.7%	98.6%	98.8%	99.0%	99.0%	98.8%	98.8%	98.8%	98.8%	98.7%	98.7%	98.5%	98.4%	98.2%	98.0%	97.9%	98.0%	97.9%	97.7%	97.8%		
\$700,001 and above	95.7%	95.8%	96.1%	96.5%	96.6%	96.7%	96.8%	96.4%	96.5%	96.5%	96.5%	96.6%	96.5%	96.5%	96.4%	96.6%	96.6%	96.6%	96.7%	97.0%	96.9%	96.9%	96.4%	96.5%		
All Condos	98.8%	98.7%	98.7%	98.6%	98.6%	98.5%	98.6%	98.6%	98.5%	98.3%	98.2%	98.3%	98.2%	98.3%	98.2%	98.3%	98.3%	98.2%	98.1%	98.0%	97.9%	97.8%	97.6%	97.6%		

SOURCE: Honolulu Board of REALTORS®, compiled from MLS data.

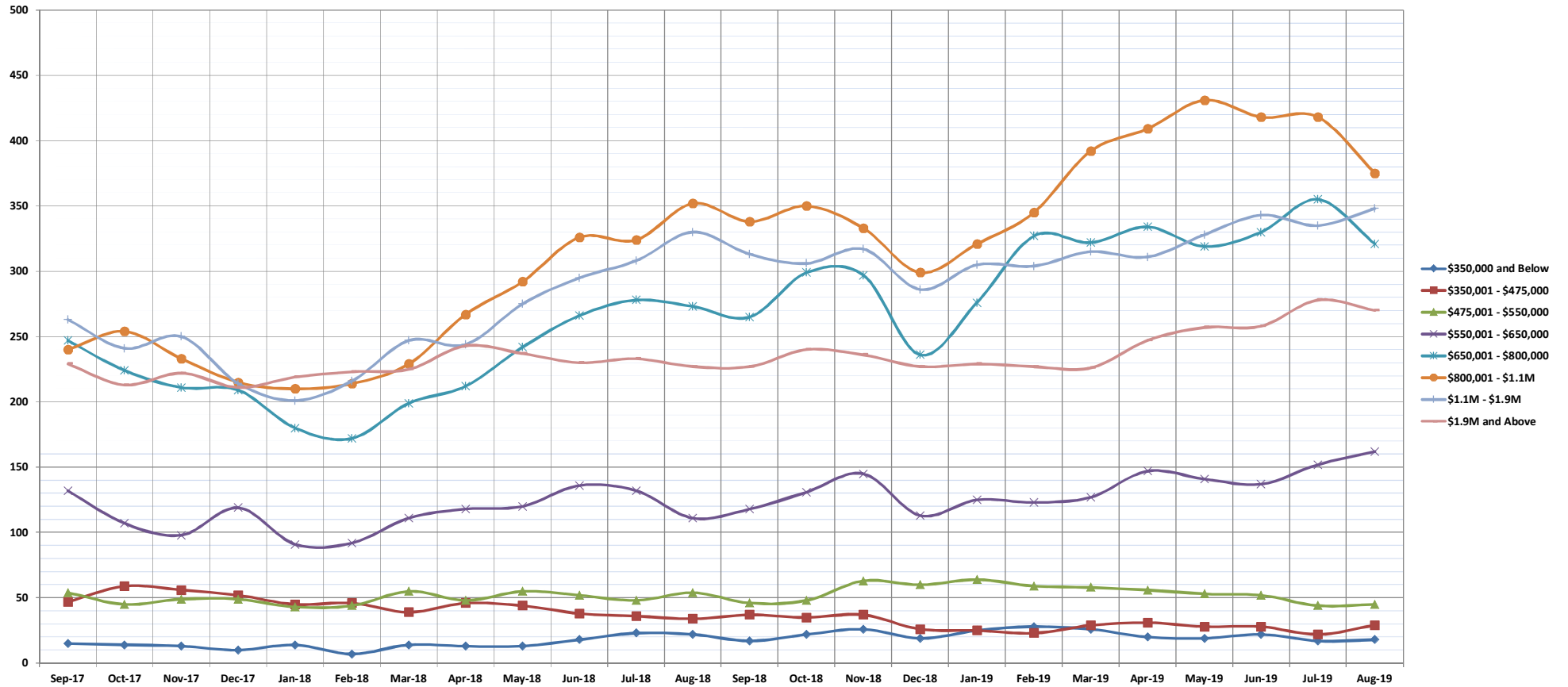
©Copyright 2019. Honolulu Board of REALTORS®. All Rights Reserved. Information herein deemed reliable but not guaranteed.

Inventory of Homes for Sale

August 2019

Single Family Homes: Monthly, by Price Range

(The number of properties available for sale in active status at the end of a given month)



	Sep-17	Oct-17	Nov-17	Dec-17	Jan-18	Feb-18	Mar-18	Apr-18	May-18	Jun-18	Jul-18	Aug-18	Sep-18	Oct-18	Nov-18	Dec-18	Jan-19	Feb-19	Mar-19	Apr-19	May-19	Jun-19	Jul-19	Aug-19
\$350,000 and Below	15	14	13	10	14	7	14	13	13	18	23	22	17	22	26	19	25	28	26	20	19	22	17	18
\$350,001 - \$475,000	47	59	56	52	45	46	39	46	44	38	36	34	37	35	37	26	25	23	29	31	28	28	22	29
\$475,001 - \$550,000	54	45	49	49	43	44	55	48	55	52	48	54	46	48	63	60	64	59	58	56	53	52	44	45
\$550,001 - \$650,000	132	107	98	119	91	92	111	118	120	136	132	111	118	131	145	113	125	123	127	147	141	137	152	162
\$650,001 - \$800,000	247	224	211	209	180	172	199	212	242	266	278	273	265	299	297	236	276	327	322	334	319	330	355	321
\$800,001 - \$1.1M	240	254	233	215	210	214	229	267	292	326	324	352	338	350	333	299	321	345	392	409	431	418	418	375
\$1.1M - \$1.9M	263	241	250	214	201	216	247	244	275	295	308	330	313	306	317	286	305	304	315	311	328	343	335	348
\$1.9M and Above	229	213	222	211	219	223	225	243	237	230	233	227	227	240	236	227	229	227	226	247	257	258	278	270
All Single Family Homes	1227	1157	1132	1079	1003	1014	1119	1191	1278	1361	1382	1403	1361	1431	1454	1266	1370	1436	1495	1555	1576	1588	1621	1568

SOURCE: Honolulu Board of REALTORS®, compiled from MLS data.

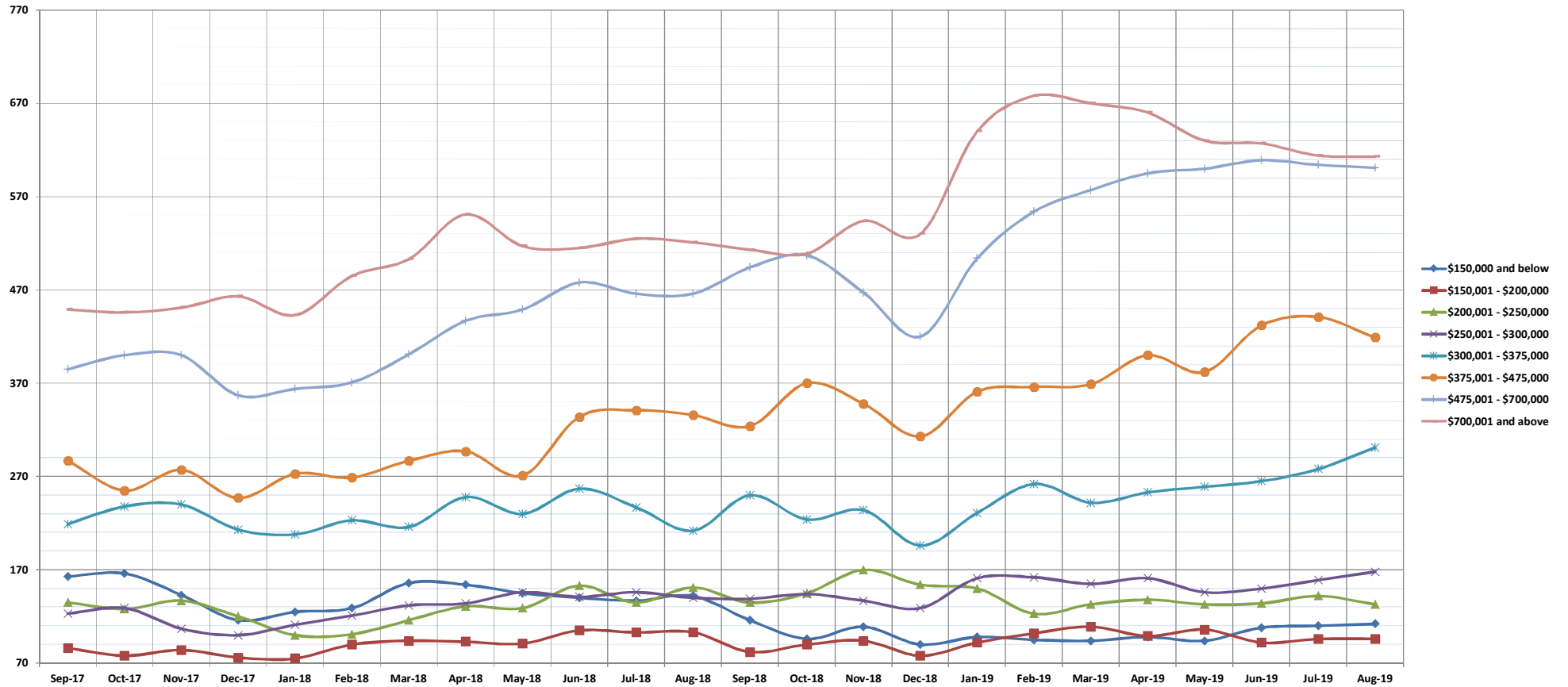
©Copyright 2019. Honolulu Board of REALTORS®, All Rights Reserved. Information herein deemed reliable but not guaranteed.

Inventory of Homes for Sale

August 2019

Condos: Monthly, by Price Range

(The number of properties available for sale in active status at the end of a given month)



	Sep-17	Oct-17	Nov-17	Dec-17	Jan-18	Feb-18	Mar-18	Apr-18	May-18	Jun-18	Jul-18	Aug-18	Sep-18	Oct-18	Nov-18	Dec-18	Jan-19	Feb-19	Mar-19	Apr-19	May-19	Jun-19	Jul-19	Aug-19
\$150,000 and below	163	166	143	116	125	129	156	154	145	140	137	142	116	96	109	90	98	95	94	98	94	108	110	112
\$150,001 - \$200,000	86	78	84	76	75	90	94	93	91	105	103	103	82	90	94	78	92	102	109	99	106	92	96	96
\$200,001 - \$250,000	135	128	137	120	100	101	116	131	129	153	135	151	135	145	170	154	150	123	133	138	133	134	142	133
\$250,001 - \$300,000	123	129	107	100	111	121	132	134	146	141	146	140	139	144	137	129	161	162	155	161	146	150	159	168
\$300,001 - \$375,000	219	238	240	213	208	223	216	248	230	257	237	212	250	224	234	196	231	262	242	253	259	265	278	301
\$375,001 - \$475,000	287	255	277	247	273	269	287	297	271	334	341	336	324	370	348	313	361	366	369	400	382	432	441	419
\$475,001 - \$700,000	385	400	400	357	364	371	401	437	449	478	466	466	494	507	467	420	504	554	577	595	600	609	604	601
\$700,001 and above	449	446	451	463	443	485	503	551	517	515	525	521	513	509	544	530	640	678	670	660	630	627	614	613
All Condos	1847	1840	1839	1692	1699	1789	1905	2045	1978	2123	2090	2071	2053	2085	2103	1910	2237	2342	2349	2404	2350	2417	2444	2443

SOURCE: Honolulu Board of REALTORS®, compiled from MLS data.

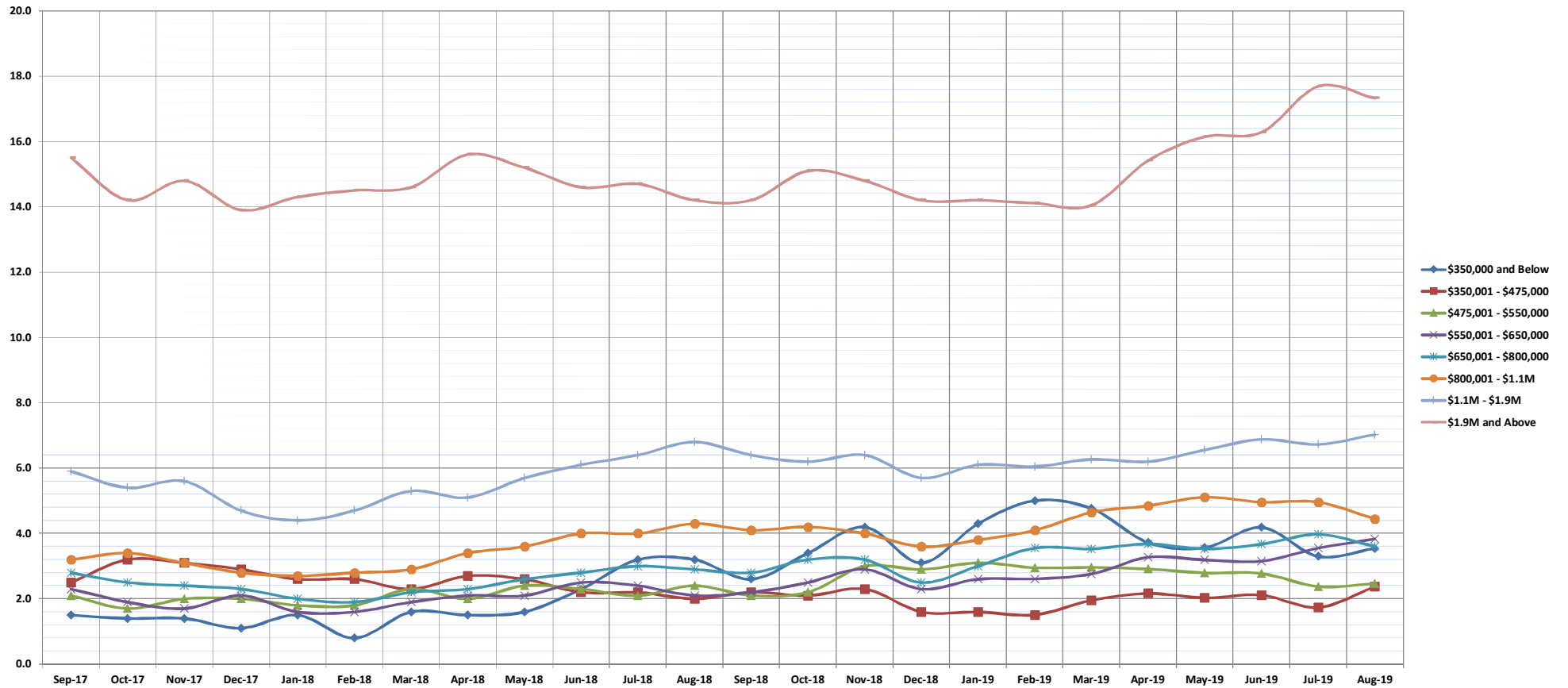
©Copyright 2019. Honolulu Board of REALTORS®. All Rights Reserved. Information herein deemed reliable but not guaranteed.

Months Supply of Inventory

August 2019

Single Family Homes: Monthly, by Price Range

(Compares the number of active listings available to the average monthly pending sales from the last 12 months)



	Sep-17	Oct-17	Nov-17	Dec-17	Jan-18	Feb-18	Mar-18	Apr-18	May-18	Jun-18	Jul-18	Aug-18	Sep-18	Oct-18	Nov-18	Dec-18	Jan-19	Feb-19	Mar-19	Apr-19	May-19	Jun-19	Jul-19	Aug-19
\$350,000 and Below	1.5	1.4	1.4	1.1	1.5	0.8	1.6	1.5	1.6	2.3	3.2	3.2	2.6	3.4	4.2	3.1	4.3	5.0	4.8	3.7	3.6	4.2	3.3	3.5
\$350,001 - \$475,000	2.5	3.2	3.1	2.9	2.6	2.6	2.3	2.7	2.6	2.2	2.2	2.0	2.2	2.1	2.3	1.6	1.6	1.5	2.0	2.2	2.0	2.1	1.7	2.4
\$475,001 - \$550,000	2.1	1.7	2.0	2.0	1.8	1.8	2.3	2.0	2.4	2.3	2.1	2.4	2.1	2.2	3.0	2.9	3.1	3.0	3.0	2.9	2.8	2.8	2.4	2.5
\$550,001 - \$650,000	2.3	1.9	1.7	2.1	1.6	1.6	1.9	2.1	2.1	2.5	2.4	2.1	2.2	2.5	2.9	2.3	2.6	2.6	2.8	3.3	3.2	3.2	3.6	3.8
\$650,001 - \$800,000	2.8	2.5	2.4	2.3	2.0	1.9	2.2	2.3	2.6	2.8	3.0	2.9	2.8	3.2	3.2	2.5	3.0	3.6	3.5	3.7	3.5	3.7	4.0	3.6
\$800,001 - \$1.1M	3.2	3.4	3.1	2.8	2.7	2.8	2.9	3.4	3.6	4.0	4.0	4.3	4.1	4.2	4.0	3.6	3.8	4.1	4.6	4.8	5.1	5.0	5.0	4.4
\$1.1M - \$1.9M	5.9	5.4	5.6	4.7	4.4	4.7	5.3	5.1	5.7	6.1	6.4	6.8	6.4	6.2	6.4	5.7	6.1	6.0	6.3	6.2	6.6	6.9	6.7	7.0
\$1.9M and Above	15.5	14.2	14.8	13.9	14.3	14.5	14.6	15.6	15.2	14.6	14.7	14.2	14.2	15.1	14.8	14.2	14.2	14.1	14.0	15.4	16.1	16.3	17.7	17.3
All Single Family Homes	3.7	3.4	3.4	3.2	3.0	3.0	3.3	3.5	3.7	4.0	4.1	4.1	4.0	4.2	4.3	3.8	4.1	4.3	4.6	4.8	4.9	5.0	5.1	5.0

SOURCE: Honolulu Board of REALTORS®, compiled from MLS data.

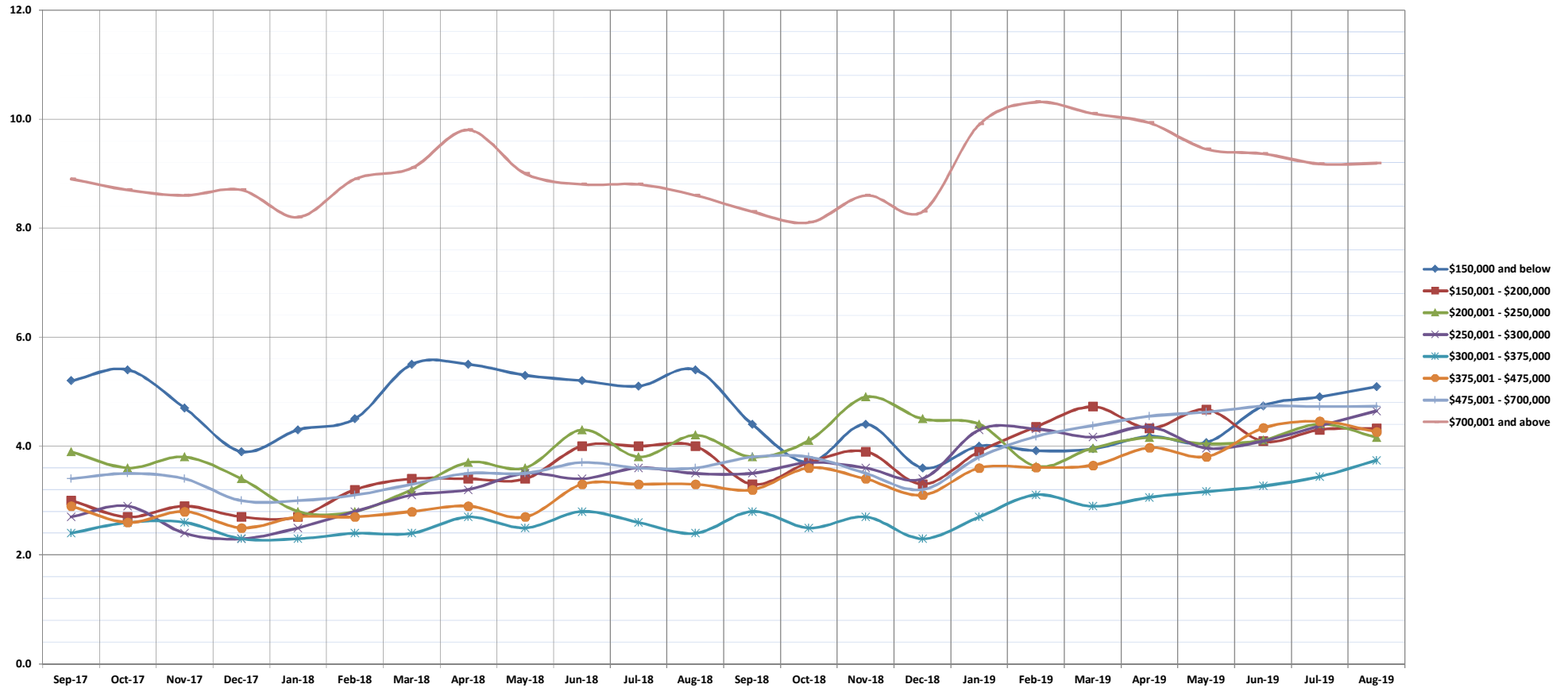
©Copyright 2019. Honolulu Board of REALTORS®, All Rights Reserved. Information herein deemed reliable but not guaranteed.

Months Supply of Inventory

August 2019

Condos: Monthly, by Price Range

(Compares the number of active listings available to the average monthly pending sales from the last 12 months)



	Sep-17	Oct-17	Nov-17	Dec-17	Jan-18	Feb-18	Mar-18	Apr-18	May-18	Jun-18	Jul-18	Aug-18	Sep-18	Oct-18	Nov-18	Dec-18	Jan-19	Feb-19	Mar-19	Apr-19	May-19	Jun-19	Jul-19	Aug-19
\$150,000 and below	5.2	5.4	4.7	3.9	4.3	4.5	5.5	5.5	5.3	5.2	5.1	5.4	4.4	3.7	4.4	3.6	4.0	3.9	3.9	4.2	4.1	4.7	4.9	5.1
\$150,001 - \$200,000	3.0	2.7	2.9	2.7	2.7	3.2	3.4	3.4	3.4	4.0	4.0	4.0	3.3	3.7	3.9	3.3	3.9	4.4	4.7	4.3	4.7	4.1	4.3	4.3
\$200,001 - \$250,000	3.9	3.6	3.8	3.4	2.8	2.8	3.2	3.7	3.6	4.3	3.8	4.2	3.8	4.1	4.9	4.5	4.4	3.6	4.0	4.2	4.0	4.1	4.4	4.2
\$250,001 - \$300,000	2.7	2.9	2.4	2.3	2.5	2.8	3.1	3.2	3.5	3.4	3.6	3.5	3.5	3.7	3.6	3.4	4.3	4.3	4.2	4.4	4.0	4.1	4.4	4.6
\$300,001 - \$375,000	2.4	2.6	2.6	2.3	2.3	2.4	2.4	2.7	2.5	2.8	2.6	2.4	2.8	2.5	2.7	2.3	2.7	3.1	2.9	3.1	3.2	3.3	3.4	3.7
\$375,001 - \$475,000	2.9	2.6	2.8	2.5	2.7	2.7	2.8	2.9	2.7	3.3	3.3	3.3	3.2	3.6	3.4	3.1	3.6	3.6	3.6	4.0	3.8	4.3	4.5	4.3
\$475,001 - \$700,000	3.4	3.5	3.4	3.0	3.0	3.1	3.3	3.5	3.5	3.7	3.6	3.6	3.8	3.8	3.5	3.2	3.8	4.2	4.4	4.5	4.6	4.7	4.7	4.7
\$700,001 and above	8.9	8.7	8.6	8.7	8.2	8.9	9.1	9.8	9.0	8.8	8.8	8.6	8.3	8.1	8.6	8.3	9.9	10.3	10.1	9.9	9.4	9.4	9.2	9.2
All Condos	3.8	3.7	3.7	3.4	3.4	3.6	3.8	4.0	3.9	4.2	4.1	4.1	4.0	4.1	4.2	3.8	4.5	4.7	4.7	4.8	4.8	4.9	5.0	5.0

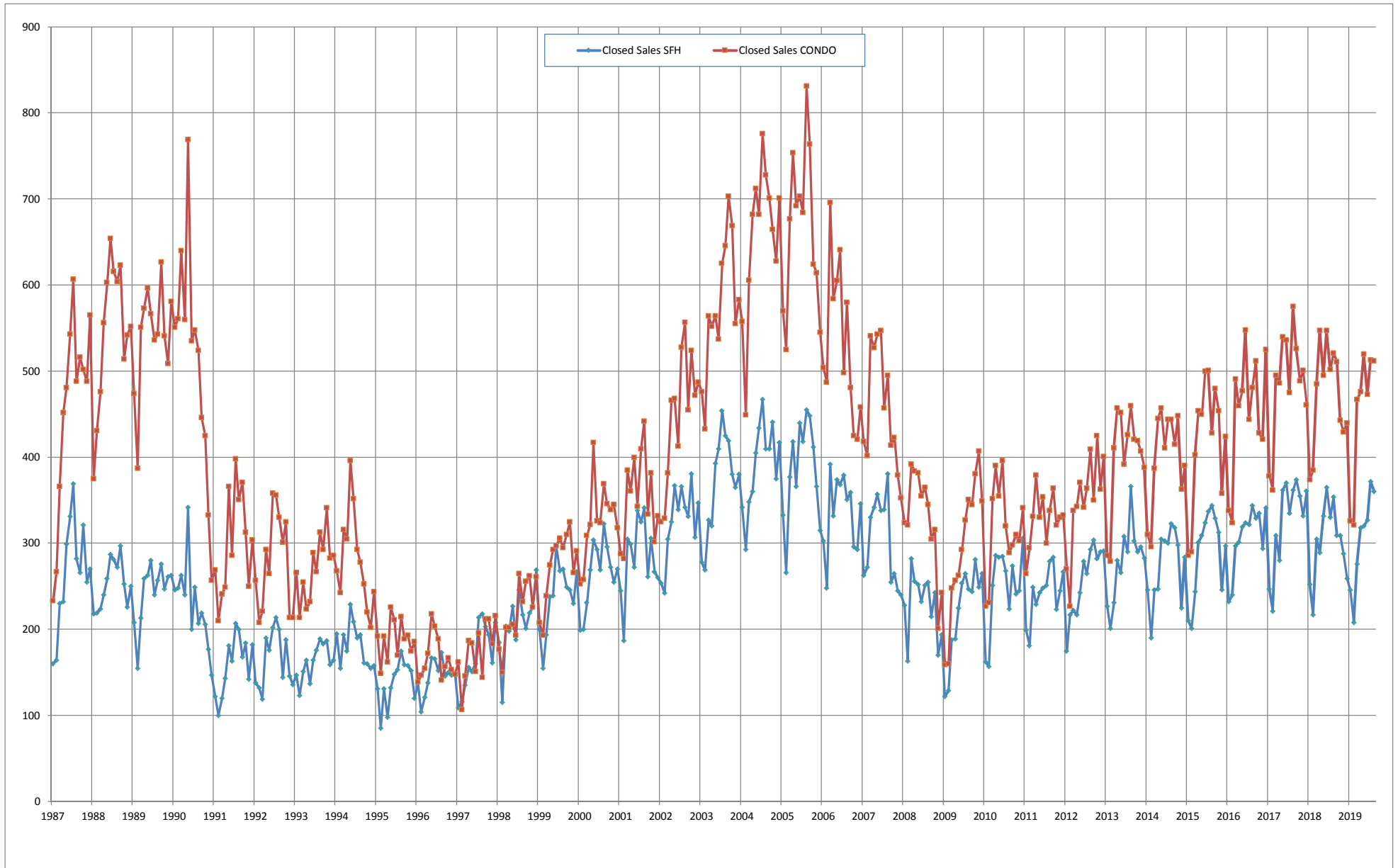
SOURCE: Honolulu Board of REALTORS®, compiled from MLS data.

©Copyright 2019. Honolulu Board of REALTORS®, All Rights Reserved. Information herein deemed reliable but not guaranteed.

Closed Sales

Single Family Homes and Condos

OAHU, HAWAII: Jan 1987 to the Present



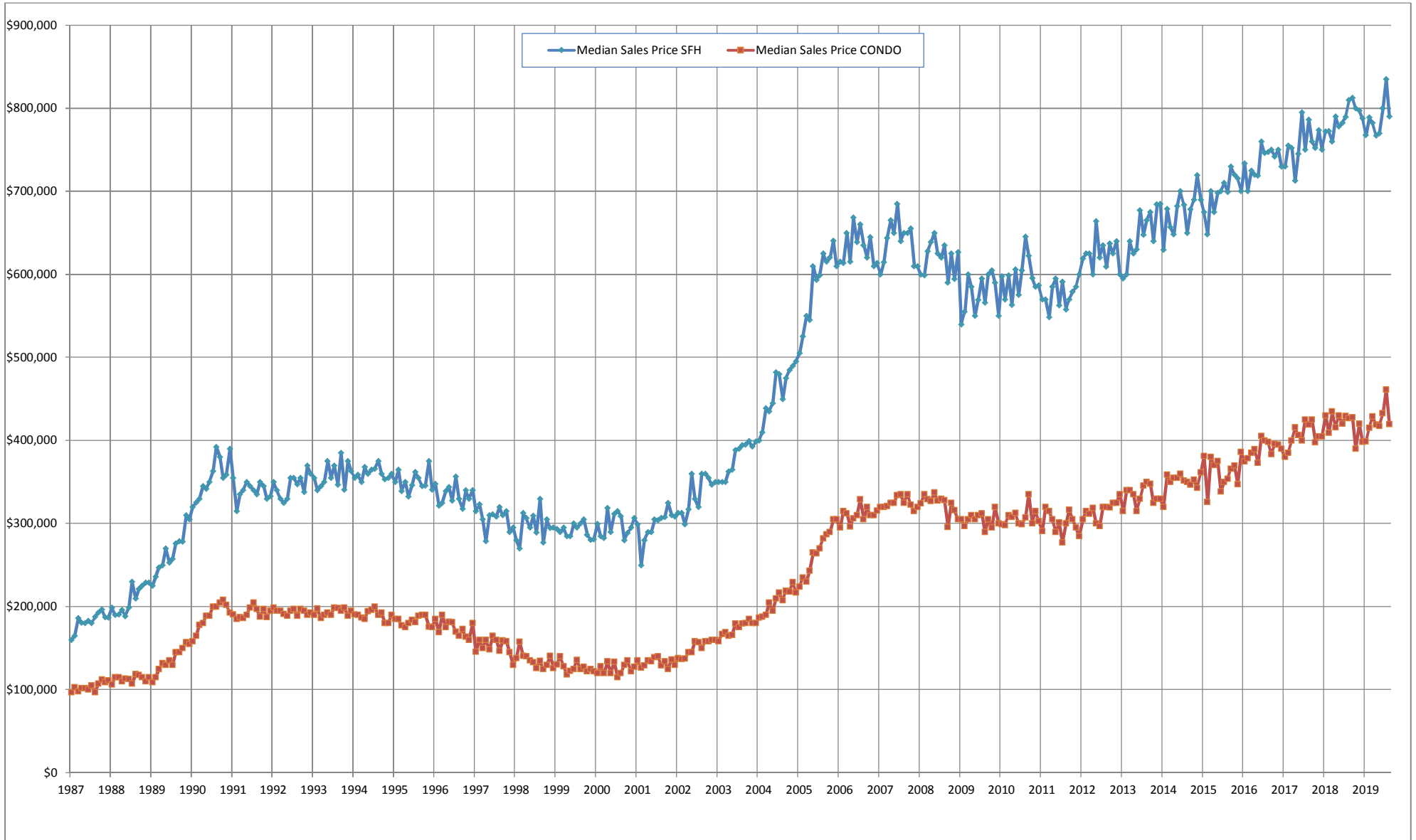
SOURCE: Honolulu Board of REALTORS®, compiled from MLS data.

©Copyright 2019. Honolulu Board of REALTORS®. All Rights Reserved. Information herein deemed reliable but not guaranteed.

Median Sales Price

Single Family Homes and Condos

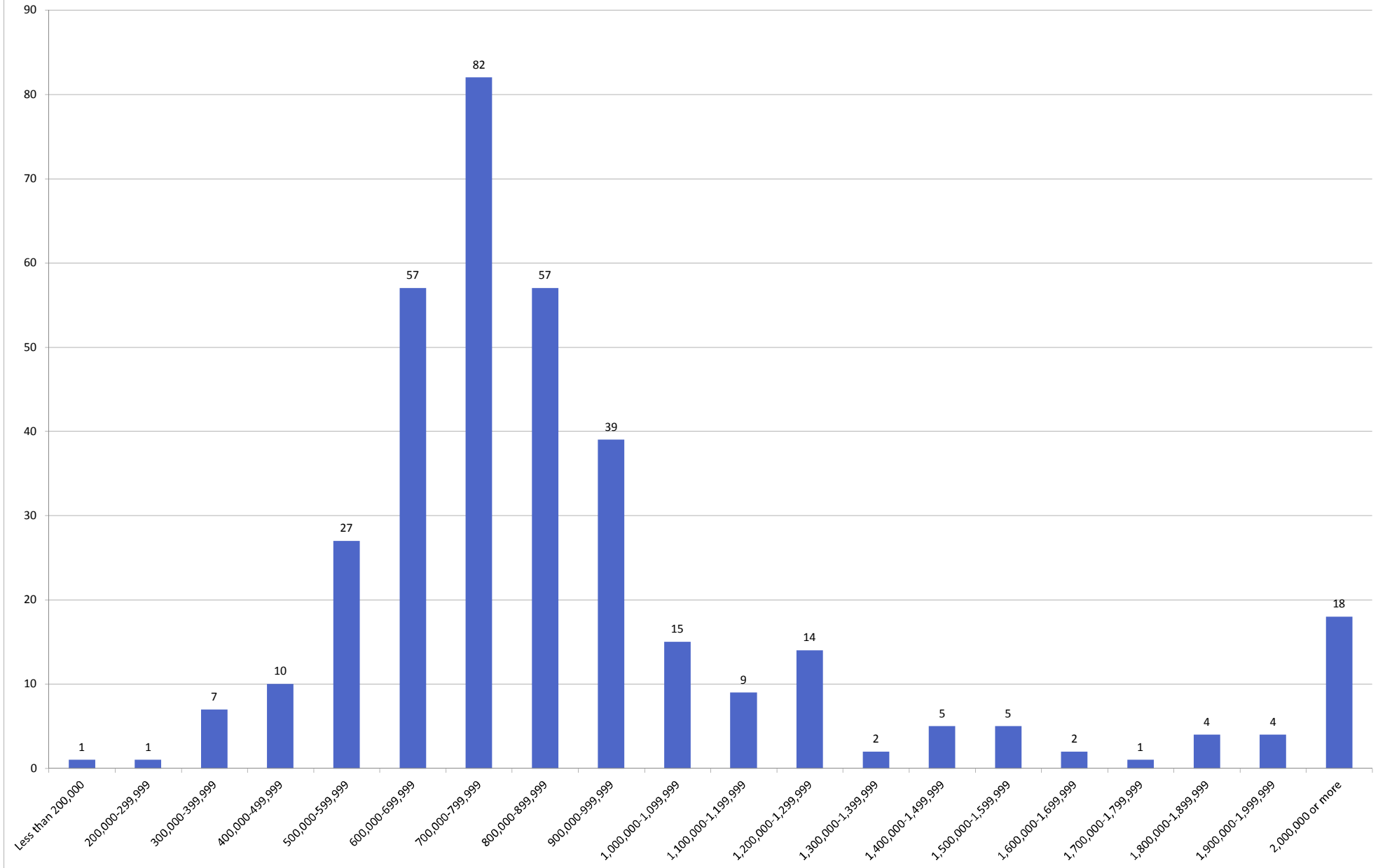
OAHU, HAWAII: Jan 1987 to the Present



SOURCE: Honolulu Board of REALTORS®, compiled from MLS data.

©Copyright 2019. Honolulu Board of REALTORS®. All Rights Reserved. Information herein deemed reliable but not guaranteed.

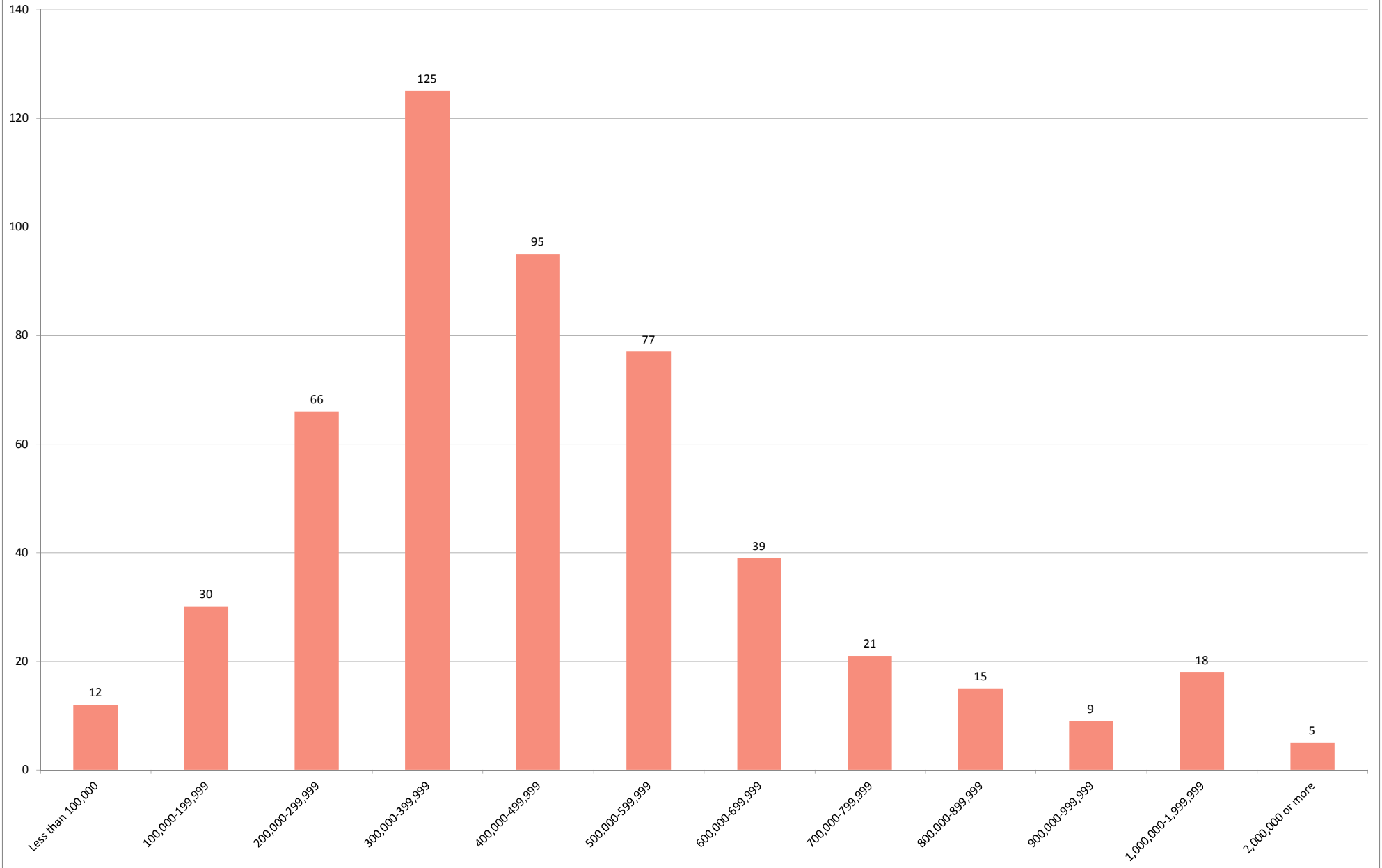
August 2019 Single Family Homes Sold



SOURCE: Honolulu Board of REALTORS®, compiled from MLS data.

©Copyright 2019. Honolulu Board of REALTORS®. All Rights Reserved. Information herein deemed reliable but not guaranteed.

August 2019 Condos Sold



SOURCE: Honolulu Board of REALTORS®, compiled from MLS data.

©Copyright 2019. Honolulu Board of REALTORS®. All Rights Reserved. Information herein deemed reliable but not guaranteed.